

END OF TERM REPORT



PORT STEPHENS COUNCIL SEPTEMBER 2008 - JUNE 2012



This report was prepared by:
Corporate Strategy & Planning,
Port Stephens Council
PO Box 42
Raymond Terrace NSW 2324
Australia

Tel: +61 2 4980 0255

Email: council@portstephens.nsw.gov.au
www.portstephens.nsw.gov.au

© Port Stephens Council 2012

Port Stephens Council 2008 - 2012
End of Term Report

Table of Contents

Table of Contents

- Introduction6
- Port Stephens Council 2008 – 2012.....8
- Our Citizens10
- Our Citizens11
 - Theme: Community Safety11
 - Personal Safety.....11
 - Community & Public Safety.....12
- Our Citizens15
 - Theme: Seniors and People with Disabilities.....15
 - Seniors.....15
 - People with Disabilities.....18
- Our Citizens20
 - Theme: Children & Young People20
 - Children20
 - Young People23
- Our Citizens25
 - Theme: Community Planning & Partnerships.....25
 - Planning Facilities and Services.....25
 - Advocating for Facilities and Services27
- Our Lifestyle31
 - Theme: Recreation, Leisure, Arts and Culture31
 - Lifestyle in Port Stephens – Active31
 - Lifestyle in Port Stephens – Passive33
 - Heritage36
- Our Environment37
 - Theme: Environmental Management37
 - Noise37
 - Energy Use39
 - Water Quality43
 - Potable Water & Sewerage.....44
 - Air Quality45
 - Land Use.....46
- Our Environment49
 - Theme: Primary Industries and Natural Resources49
- Our Environment51
 - Theme: Waste Management51
- Our Environment53
 - Theme: Sustainable Development53
 - Planning53
- Our Economy.....58
 - Theme: Economic Development.....58
- Our Economy.....61
 - Theme: Education and Training.....61
- Our Economy.....63
 - Theme: Employment63
- Our Economy.....64
 - Theme: Technology64
- Our Economy.....65
 - Theme: Transport65

Our Council.....	68
Theme: A Sustainable Council	68
Financial Sustainability	68
Asset Management	71
Council's Workforce:	72
Our Council.....	74
Theme: Infrastructure	74
Our Council.....	77
Theme: Governance and Civic Leadership	77
Civic Leadership	77
Advocacy.....	78
Governance.....	78
Attachment 1 Data from 2011 Census for the Port Stephens Local Government Area	81
Disclaimer	82

Figure 1: Port Stephens Council Organisation Chart.....	72
---	----

Graph 1: Perceptions of Personal Safety	11
Graph 2: Crime Statistics - Serious Offences.....	12
Graph 3: Council Regulatory Statistics	12
Graph 4: Community Safety & Compliance	13
Graph 5: Council's Community Volunteers.....	30
Graph 6: Open Space	31
Graph 7: Ratio of Playgrounds to Standard	31
Graph 8: Noise Complaints by Ward	37
Graph 9: Energy Use - Port Stephens Residential Use.....	39
Graph 10: Council's Energy Use	40
Graph 11: Koala Encounters	42
Graph 12: Water Quality – Primary Contact.....	43
Graph 13: Water Quality - Secondary Contact.....	44
Graph 14: Air Quality Index	46
Graph 15: Total Waste - Port Stephens LGA	51
Graph 16: Visitor Information Centre Visitor Numbers.....	60
Graph 17: Council Apprenticeships & Traineeships	62
Graph 20: Net Operating Result	69
Graph 18: Council's Source of Revenue	69
Graph 19: Council's Expenditure	70
Graph 21: Debt Service Ratio	70
Graph 22: Unrestricted Current Ratio	71
Graph 23: Voluntary Staff Turnover	73
Graph 24: Ration of Population to EFT.....	73
Graph 25: Asset Rating Distribution - Public Assets	75
Graph 26: Completed Capital Works Projects - Number and Cost	76

Map 1: Location - Port Stephens LGA	7
Map 2: Aircraft Noise	38
Map 3: Endangered Ecological Communities.....	41
Map 4: Extent of Noxious Weeds.....	42
Map 5: Hunter Water Special Areas	45
Map 6: Extent of Acid Sulfate Soils	47
Map 7: Port Stephens LGA Planning Districts.....	53
Map 8: Port Stephens LGA - Bushfire Prone Land	56
Map 9: Non-rateable Land	68

Table 1: Port Stephens LGA Population Structure	10
Table 2: Snapshot Comparison Statistics.....	10
Table 3: Aged Care Packages	16

Table 4: Community Service Providers	16
Table 5: Aged Care Places	16
Table 6: General Practitioners Statistics.....	16
Table 7: Demographics - Children	20
Table 8: Australian Early Childhood Development Index.....	20
Table 9: Port Stephens Schools - Enrolment	21
Table 10: Demographic Statistics - Young People.....	23
Table 11: Enrolments - High Schools	23
Table 12: Port Stephens Council Committees (355c).....	25
Table 13: Regional Committees.....	27
Table 14: Footpaths & Cycleways.....	33
Table 15: Libraries - Performance against Standard	34
Table 16: Threatened Fauna & Flora.....	40
Table 17: On Site Sewerage Management Systems	45
Table 18: Community Lands in LGA	46
Table 19: Housing Affordability - Median Rentals	57
Table 20: Housing Affordability - Median Sales	57
Table 21 : Visitor Information Centre	60
Table 22: Courses - Communicate Port Stephens	61
Table 23: Learning & Development Port Stephens Council.....	62
Table 24: Condition of State Roads	65
Table 25: Condition of Local Roads Port Stephens LGA.....	66
Table 26: Rating Categories.....	68

Introduction

This **End of Term Report** has been prepared under Section 428 and Essential Element 1.10 of the Local Government Act. Port Stephens Council is required to prepare a report on the progress on implementation of the Community Strategic Plan that must be presented at the final meeting of an outgoing council.¹

This report from the outgoing council should measure the implementation and effectiveness of the Community Strategic Plan in achieving its social, environmental, economic and civic leadership objectives over the past four years.² This report has been prepared using recommended format for the report – a 'state of the LGA' style, which uses measurement indicators to show change over time.

This is the first report of its type to be prepared for Port Stephens Local Government Area and as such it is to be considered as a **baseline report**. Every four years at the conclusion of the term of a council a new report will be prepared using this Report as the baseline.

Methodology

In preparing the End of Term Report Council should indicate its own contribution to the outcomes for the community compared to the Community Strategic Plan as well as those of other agencies' and community contributions. Council's contribution is shown throughout the Report in a blue frame:

Where other agencies have lead or contributed significantly to outcomes these are shown throughout the Report in an orange red frame:

Using the themes and strategic directions in the 2021, this Port Stephens 2008 – 2012 Report has credible sources as well as Council's own records.



Community Strategic Plan Port Stephens identified data from publicly available,

This Report uses graphical and tabular performance data. The frequency of when the varies. Some data are measured monthly, or annually with some relying on collections such as the Australian Bureau of Statistics' census data which is collected every five years. There is often a lag in the time between the collection period and the reporting time. There are almost no measures that absolutely correlate to the term of the current Council of Port Stephens.



illustrations to visually represent data are collected for each measure more frequently, others each quarter or

The Port Stephens Local Government Area is a large and complex society with a diverse population and a range of environments, businesses and recreational attributes. This Report does not claim to cover all aspects of the LGA but it is hoped that it is generally representative of the area and its people. For example, every attempt has been made to identify groups within the LGA that have contributed to outcomes for the community; however some may not have been included. It is hoped that reading this Report will trigger feedback to ensure that future reports trend towards being more inclusive.

¹ Guideline 1.10 Local Government Act 1993

² Ibid. 1.11

Community Strategic Plan Indicators

At the end of each Theme a table presents measures that were established at the commencement of the Community Strategic Plan process. The table uses a 'traffic light' colour-code to demonstrate progress in achieving strategic goals:

Community Indicator	Outcome
Indicator	Progress is negative
Indicator	Progress is on track or acceptable
Indicator	Progress is above what was expected

Where there are no data available the Outcome will be coded orange



Report Coverage

This End of Term Report relates specifically to the Port Stephens Local Government Area. Most data sources define this LGA as being in the Hunter Region, although some refer to Lower Hunter Region. Others such as the tourism data place the LGA in the Mid-North Coast Region.



Map 1: Location - Port Stephens LGA

Port Stephens Council 2008 – 2012

Local Government Elections were held on 28 September 2008 and the following Councillors were elected. A by-election was held in West Ward in June 2010 after the resignation of Councillor Maher. Councillor De Lyall was elected to Council for West Ward.

Ward	Councillors
East	Councillor Sally Dover (Deputy Mayor 2010-2011)
	Councillor John Nell
	Councillor Bob Westbury (Mayor 2010-2011, 2011-2012, Deputy Mayor 2008-2009, 2009-2010)
	Councillor Frank Ward
Central	Councillor Geoff Dingle
	Councillor Bruce Mackenzie (Mayor 2008-2009, 2009-2010)
	Councillor Shirley O'Brien
	Councillor Steve Tucker
West Ward	Councillor Caroline De Lyall (elected June 2010)
	Councillor Glenys Francis
	Councillor Ken Jordan (Deputy Mayor 2011-2012)
	Councillor Peter Kafer
	Councillor Daniel Maher (resigned March 2010)



(l to r) Councillors Sally Dover, John Nell, Bob Westbury, Frank Ward



(l to r) Councillors Geoff Dingle, Bruce Mackenzie, Shirley O'Brien, Steve Tucker



(l to r) Councillors Caroline De Lyall, Glenys Francis, Ken Jordan, Peter Kafer



Former Councillor Daniel Maher
(September 2008 –March 2010)

Mr Peter Gesling has been General Manager of
Port Stephens Council since 1998.



Our Citizens³

In 2006 the population of the Port Stephens Local Government Area was 60,484, of which 49.4% were males and 50.6% were females. In 2011 the population was 64,807, of which 49.2% were males and 50.8% were females. Of our citizens in 2011, 2,325 were Aboriginal or Torres Strait Islanders compared to 1,742 in 2006. In 2011 90.57% of the LGA's population are Australian citizens; the median age of our citizens is 42.

The population of the Port Stephens Local Government Area has grown by 7.1% between 2006 and 2011.

Table 1: Port Stephens LGA Population Structure

Age groups:	2006	2011
0-4 years	6.20%	6.40%
5-14 years	14.60%	13.10%
15-24 years	11.70%	11.73%
25-54 years	37.40%	35.77%
55-64 years	13.10%	13.60%
65 years and over	16.90%	19.30%

Table 2: Snapshot Comparison Statistics

	2006	2011
Average people per household	2.93	2.5
Median weekly household income	\$830	\$999
Median monthly mortgage repayments	\$1,300	\$1,725
Median weekly rent	\$180	\$250
Average motor vehicles per dwelling	1.3	1.8

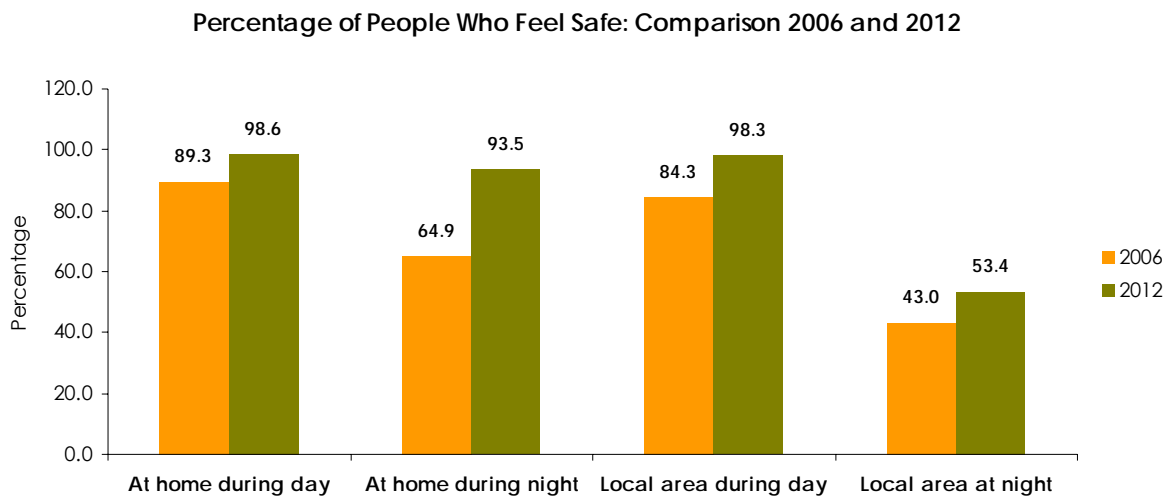
³ The data on this page is sourced from the Australian Census data 2006 and 2011

Our Citizens

Theme: Community Safety

Strategic Direction: A community where people feel safe.

Graph 1: Perceptions of Personal Safety



Personal Safety

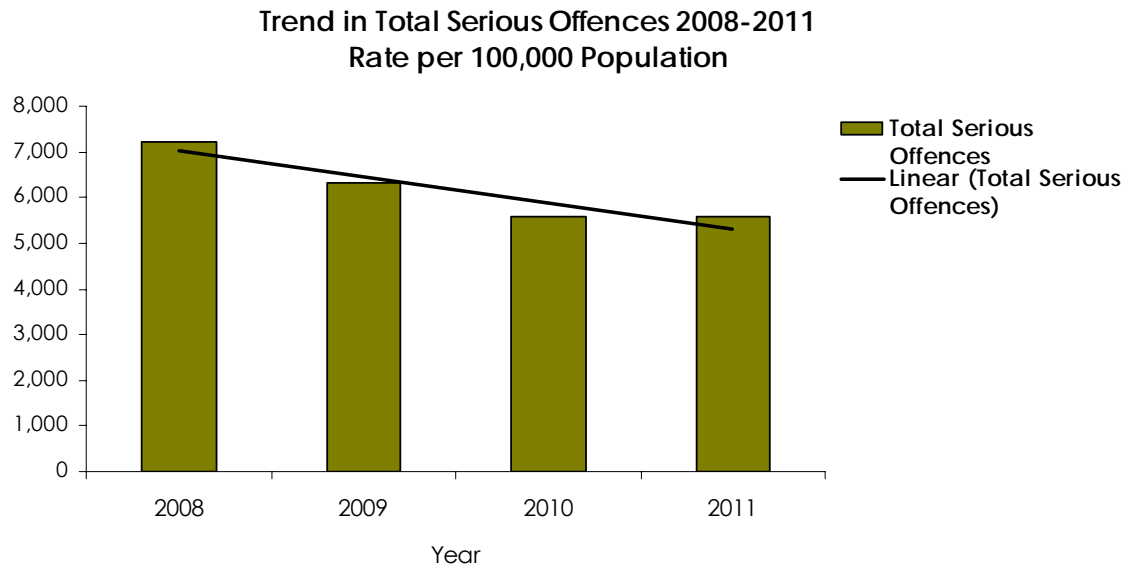
In 2006 on Council's behalf, the Hunter Valley Research Foundation asked residents of Port Stephens how they felt about personal safety.⁴ In 2012 residents were again asked their perceptions of personal safety. The results are shown in Graph 1.

- In 2008 NSW Police established a new Port Stephens Local Area Command
- In 2011 NSW Police established a new Police Station at Raymond Terrace

⁴ 2006 Port Stephens Council Community Survey

Crime Statistics⁵

Graph 2: Crime Statistics - Serious Offences



Since 2008 the incidence of the 17 major offences has been stable or in decline, with the exception of small increases in sexual assault/indecency offences. The biggest decreases were in motor vehicle theft (-11.2%) and domestic violence assaults (-11.3%).

Community & Public Safety

Council's Rangers and Health and Building Surveyors provide a range of services for our community that cover littering, companion animal services, health inspections, parking, fire safety and building inspections, swimming pool safety and much more. Incidents are categorised as Critical, Moderate or Minor and are recorded in Council's Customer Request Management system.

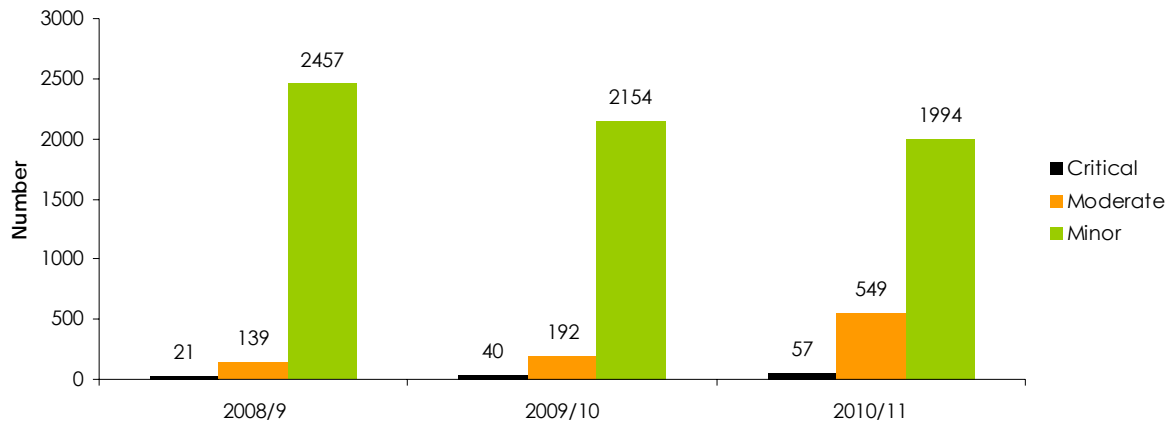
Critical and Moderate level incidents increased somewhat whilst Minor incidents trended downwards. The majority of critical incidents occurred in West Ward (50) followed by Central Ward (36) and East Ward (32).

Council staff support White Ribbon Day



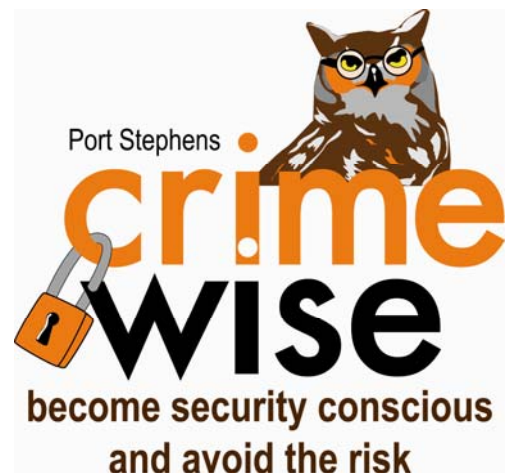
⁵ NSW Bureau of Crime Statistics
http://www.bocsar.nsw.gov.au/lawlink/bocsar/ll_bocsar.nsf/pages/bocsar_crime_stats

Community Safety & Compliance - Incidents 2008-2011



Graph 4: Community Safety & Compliance

- Council partnered with NSW Police to :
 - establish the Community Safety Precinct Committee in 2008
 - establish the Port Stephens Domestic Violence Committee in 2008 – this now operates independently of Council since 2012
 - establish Safer by Design Protocol in 2009
- Council partnered with NSW Police, the (then) Roads & Traffic Authority and local businesses to increase road safety in the LGA: the Port Stephens En Mass program won a 'Commended' citation in the 2012 National Awards for Local Government
- Council established Snak 'n Rap youth crime prevention program in 2009
- Council adopted Port Stephens Graffiti Management Plan in 2009 which was updated and continued in 2012
- Council established Crime Wise Owls Program in 2007, focussing on safety for seniors
- Council developed and distributes the Safe Partying Kits targeted at young people in partnership with NSW Police
- Council established 2 Liquor Accords with local communities which now operate independently of Council
- Established a Community Safety Website
- Council adopted the Liquor Licenced Premises in 2011



Community Indicator	Outcome
Perceptions of Safety	People feel safer since 2006
Perceptions of Environmental Health	First survey of this indicator is planned for November 2012
Level of Crime	Decreased since 2008
Road Safety	No data available for LGA

- Council provides for its community the Local Emergency Management Officer and coordinates the Local Emergency Management Committee
- *Council hosts an Emergency Services website with contacts for:*
 - Neighbourhood Safer Places (NSPs)
 - Ready 123 in an Emergency
 - Information for Flood Affected Areas
 - Port Stephens Local Disaster Plan (Displan)
 - Current Fire Danger in New South Wales
 - Winter Fire Safety
 - Fire Hazard Reduction Initiatives
 - NSW State Emergency Service (SES) Combat Agency for Floods & Storms

Our Citizens

Theme: Seniors and People with Disabilities

Strategic Direction: Improved access and equitable provision of services and facilities for seniors and people with disabilities.

Seniors

In 2006 16.9% of the citizens of Port Stephens were aged 65 years and over.⁶ In 2011 19.3% of our citizens were aged 65 years and over.⁷

Services & Facilities for Seniors

The Referral & Information Centre Hunter New England Health Service provides comprehensive Aged Care Assessment & Aged Care Client Record Completion services, as well as the assistance of a Community Dementia Nurse to provide assessment, carer education, support and case management.

There are four non-government agencies providing Community Aged Care Packages and five that provide Extended Aged Care in the Home Packages and Dementia-specific Packages.

Port Stephens LGA has support services for seniors such as:

- Social support
- Health
- Education
- Domestic assistance
- Nursing

There are numerous senior service providers in the Port Stephens area for example:

- Integrated Living
- Aged care facilities
- Senior citizens
- Centrelink
- Church groups

There are some volunteering opportunities to assist seniors including:

- Meals on Wheels
- Neighbour Aid
- Social Visiting

Council runs Port Stephens Community Options providing:

- Assessment & Case Management
- Service Coordination for Community Options,
- Brokerage of services for clients
- ComPacks (NSW Health's Community Packages)
- Case management for multiple services e.g. Personal Care, Respite, Shopping, Domestic Assistance

⁶ Australian Bureau of Statistics 2006 Census

⁷ Department of Health & Ageing Population Estimates

Table 3: Aged Care Packages

Type of Care Packages	Number as at 2009-10 ⁸
Community Aged Care Packages	137
Extended Aged Care in the Home (EACH) General	35
Extended Aged Care in the Home (EACH) Dementia	12
Aged Care – Aboriginal & Torres Strait Islanders	20
Aged Care – Culturally & Linguistically Diverse (CALD)	5

Table 4: Community Service Providers

Number of Community Services Providers – Tilligerry & Tomaree Peninsulas 2012	
Domestic Assistance	4
Food Services	3
Personal Care Assistance	5
Transport	1
Nursing/Health Services	4
Social Support	16
Home Modifications/Maintenance	3
Multicultural Support	1

The following are the estimated *Aged Care Places* that were available in Port Stephens LGA as at 30 June 2010 (latest available data):⁹

Table 5: Aged Care Places

Type of Care	Estimated No.
Residential Care	1415
Community Care	379
Transition Care	21

General Practitioners: Population ratios (based on ABS Statistical Local Area (SLA) and most recent self-reported GP sessional data)¹⁰

Table 6: General Practitioners Statistics

ABS Estimate of Population 2011	Estimated Full-Time Equivalent GPs 2011	General Practitioner : Population Ratio 2011
64,807	43.9	1 : 1476

⁸ There have been no new allocations since this year.

⁹ These estimates are extrapolated from Department of Health & Ageing statistics for NSW as data are kept at regional and state level only

¹⁰ GP Access Annual Report 2010-2011

Community satisfaction with Council's contribution to Services for seniors was 53.8%, a decrease on the 2011 level.¹¹



Raymond Terrace Senior Citizens Centre

- Seniors Week is held annually with Council support
- Port Stephens Development Control Plan amended to include compulsory independent access audits for large scale development and encouragement of adaptable housing for seniors
- Council has 3 Senior Citizens Centres
 - Nelson Bay
 - Tanilba Bay
 - Raymond Terrace – new – opened in 2010
- Council has a Community Centre at Tomaree and Raymond Terrace

The Australian Men's Shed Association has 4 Men's Sheds in Port Stephens with 2 more being planned:

- The Shed @ Salamander
- Salamander Haven
- Tilligerry (planned)
- Karuah River (planned)
- Raymond Terrace
- Bayway Village Fern Bay

¹¹ Port Stephens Council Customer Satisfaction Surveys – comparable questions responses available for seniors since 2011

People with Disabilities

Services & Facilities for People with Disabilities

There are no data available specifically noting the demographics of people with disabilities within the Port Stephens LGA. However there are support services for people with disabilities such as:

- Accommodation
- Rehabilitation
- Events and activities
- Social support
- Personal care
- Education and employment

There are numerous disability service providers in Port Stephens including:

- Disability Services Australia
- Port Stephens Disability Services
- Lifestyle Solutions
- Eagleton Ridge
- Integrated Living
- Maiwel

There is volunteering opportunities in all areas of Port Stephens such as:

- Riding for the Disabled Association (RDA)
- Meals on Wheels
- Social Support
- Education

Council's Ngioka Horticultural and Therapy Centre provides for disability groups who access the Centre to be involved in the production of local native plants for the Council and Landcare conservation. They also conduct arts and crafts programs.



Clients working at Ngioka Centre

- In 2008 Council appointed an Ageing and Disability Community Planner
- In 2011 Council amended its Development Control Plan to ensure development applications cater for people with disabilities
- In 2010 Council held a Disability Lifestyle Access Awareness Day with staff
- Council converted its Heritage-listed Raymond Terrace Library Building and its Ngioka Centre, to provide disabled access
- In 2011 Council provided disabled access at Tomaree Aquatic Centre
- From 2008 Council has progressively converted those bus stops with shelters for disabled access
- Council supports the International Day of People with a Disability through various events and activities such as picnics at Little Beach, Nelson Bay, Boomerang Park in Raymond Terrace and art exhibits showcasing accessible art

Community Indicator	Outcome
Satisfaction with services and facilities for seniors	Council-supplied services only: decrease from 74.1 to 53.8%
Satisfaction with services and facilities for people with disabilities	No data available for LGA
Perceptions of Social Support	No data available for LGA

Our Citizens

Theme: Children & Young People

Strategic Direction: Children and young people have safe places to play, learn and grow.

Table 7: Demographics - Children

Aged 0 – 14 years	Number	% total population
Children 2006	12,581	20.8
Children 2011	12,631	19.5

Children

Services and Facilities for Children

There are 31¹² *Child Care* Centres in the Port Stephens LGA, including child care, kindergarten, preschools, learning development centre, early childhood learning centre, long day care and family day care.

The table below shows the outcomes for Port Stephens in the Australian Early Childhood Development Index 2009 (latest available data).¹³

Table 8: Australian Early Childhood Development Index

Domain	Percentage of children on track	Percentage of children developmentally vulnerable
Physical health and wellbeing	81.5%	7.9%
Social competence	78.6%	6.9%
Emotional maturity	76.9%	6.0%
Language and cognitive skills (school-based)	83.6%	7.6%
Communication skills and general knowledge	84.4%	5.3%

Overall there are 18% of children developmentally vulnerable on one or more domains of the AEDI and 8.5% are developmentally vulnerable on two or more domains. Children who are developmentally vulnerable in two or more domains are considered to be at risk.

There are 24 *primary schools* in Port Stephens and 4 *high schools* (3 government schools and one private) as well as one private school taking from kindergarten to year 10.

¹² Source: <http://www.echildcare.com.au/region/hunterRural/>; <http://www.echildcare.com.au/region/hunterUrban/>

¹³ Source: <http://maps.aedi.org.au/lga/nsw/16400> - this is the first index (2009) and comparisons are therefore not available with previous years. The next index is due in 2013.

Access to Education – Enrolments in Port Stephens LGA Schools¹⁴

Table 9: Port Stephens Schools - Enrolment

SCHOOL - Primary	YEAR/S	ENROLMENTS 2011	SCHOOL - High	YEAR/S	ENROLMENTS 2011
Anna Bay Public School	K-6	403	Hunter River High School	7 - 12	686
Boat Harbour Primary School	K-6	235	Irrawang High School	7 - 12	896
Bobs Farm Public School	K-6	32	St Philip's Christian College	K-12	706
Fern Bay Public School	K-6	41	Tomaree High School	7 - 12	1220
Grahamstown Public School	K-6	386	Medowie Christian School	K-10	293
Hinton Public School	K-6	115			
Iona Public School	K-6	65			
Irrawang Public School	P - 6	254	SCHOOL - Primary/High	YEAR/S	ENROLMENTS 2011
Karuah Public School	K-6	79	St Philip's Christian College	K-12	706
Medowie Public School	K-6	338	Medowie Christian School	K-10	293
Mount Kanwaray Public School	K-6	34			
Raymond Terrace Public School	K-6	354			
Salt Ash Public School	K-6	107			
Seaham Public School	K-6	210			
Shoal Bay Public School	K-6	326			
Soldiers Point Public School	K-6	331			
St Brigid's Primary School	K-6	404			
St Michael's Primary School	K-6	299			
Tanilba Bay Public School	K-6	447			
Tomaree Public School	K-6	375			
Wirreanda Public School	K-6	575			

¹⁴ Source: <http://www.australian-schools-directory.com.au/>

Services and Support for Children in Port Stephens LGA

- Port Stephens Family Support Services – children 12 years and under
- Raymond Terrace Neighbourhood Support Centre – children 12-14 years
- Police Citizens Youth Centre – children 12-14 years
- Catholic Care – children 12-14 years
- Samaritans – children 12-14 years
- Smith Family – children 12 years and under
- Thou Walla Centre (at Irawang Primary School) – young people and families
- Gan Gan Centre (Anna Bay Primary) – primarily for children 12 years and under

Customer satisfaction with Council services for children was 83.2% an increase on 2011.¹⁵

Council contributes to the wellbeing of children through:

- Child-Friendly Policy for all development and for rehabilitation of its assets
- An Activity Van operating across the LGA
- Many Library Services programs including Reading in the Streets
- Engaging children in the re-design and upgrade of Longworth Park at Karuah and Kitty Hawke Park at Raymond Terrace
- Snak 'n' Rap (now called Community Connections 2012) across all children and



Port Stephens Council Activity Van



Longworth Park, Karuah - designed by children for children

¹⁵ Port Stephens Council Customer Satisfaction Surveys

Young People

Table 10: Demographic Statistics - Young People

Aged 15 – 24 years	Number	% total population ¹⁶
Young People 2006	8015	11.70
Young People 2011	7584	8.70

Services & Facilities for Young People

There are 4 **high schools** (3 government schools and one private) as well as one private school taking from kindergarten to year 10.

Table 11: Enrolments - High Schools

SCHOOL - High	YEAR/S	ENROLMENTS 2011
Hunter River High School	7 - 12	686
Irrawang High School	7 - 12	896
St Philip's Christian College	K-12	706
Tomaree High School	7 - 12	1220
Medowie Christian School	K -10	293
SCHOOL - Primary/High	YEAR/S	ENROLMENTS 2011
Medowie Christian School	K-10	293

The NSW Department of Education and Training operates a TAFE at Tomaree.

Services and facilities for young people include:

- Raymond Terrace Neighbourhood Centre – ages 15 – 18 years
- Catholic Care – ages 15 – 18 years
- Samaritans – ages 15 – 18 years
- Police Citizens Youth Club
- Various Job Network providers
- Service Clubs – e.g. Lions Leadership Camp, Rotary Scholarships
- WEA programs targeting young people
- Adult education – ACE Tomaree Community Education
- YMCA Youth Gym and various programs
- Irrawang High School Marching Band
- Various church fellowship groups for young people
- Girl Guides Australia and Scouts Australia Troops
- Beacon Foundation – high school students



¹⁶ Australian Bureau of Statistics Census 2006 and 2011

Council supports young people in Port Stephens LGA through:

- Convening and supporting Port Stephens Independent Youth Network (now PS Independent Community Network 2012)
- Snak & Rap program and activities
- Job and skills training provided by its Communicate Port Stephens centre
- Library Services such as free Internet/WiFi access, young adult collection, youth events
- 8 Mayoral Scholarships each year worth \$2,500 each to assist young people to access higher education
- Mentors @ Work program with Council staff acting as mentors to 'at risk' teenagers
- Partnering with the Beacon Foundation in the Buddy Up mentoring program
- Providing 6 skate parks as well as other sports facilities – see Our Lifestyle section
- Providing support and programs for Youth Week

Community Satisfaction with Council's services and facilities for young people was 64.28%, an increase on 2011.¹⁷

Snak N Rap circle



Community Indicator	Outcome
Percentage of children reaching Australian Early Childhood Index targets	82% reached target
School retention rates	Data for this LGA not current

¹⁷ Port Stephens Council Customer Satisfaction Surveys

Our Citizens

Theme: Community Planning & Partnerships

Strategic Direction: Collaborate with the community of Port Stephens to plan for its facilities and appropriate services.

Council engages with the community of Port Stephens to **plan** facilities and to **advocate** on behalf of its citizens to other levels of government and service providers.

Planning Facilities and Services

All planning instruments in the Port Stephens LGA are subject to the requirement to consult with the community prior to being adopted by Council. As a result Council has established a matrix framework for engagement with the community under its **Community Engagement Policy**, which is administered by the **Community Engagement Panel**.¹⁸ Council's **Residents Panel** was established in 2008 to provide an on-going representative voice for the community of Port Stephens and is regularly consulted on a range of issues – not just planning decisions but also market testing of issues such as waste roadside collection frequency, customer satisfaction surveys – and operational matters of Council.

Council convenes the Aboriginal Strategic Committee which meets 11 times a year to advise on matters of particular concern to the aboriginal community of Port Stephens.¹⁹

There are over 50 community committees established under Sections 355 and 377 of the Local Government Act 1993 who are involved in the care, assistance and management of Council's facilities, services and events.

Table 12: Port Stephens Council Committees (355c)

Aboriginal Strategic Committee	Lemon Tree Passage Parks and Reserves
Anna Bay, Birubi Point Reserves, Hall & Tidy Towns Committee	Mallabula Community Centre Committee
Audit Committee	Mallabula Parks and Reserves Committee
Boat Harbour Parks and Reserves Committee	Mambo Wanda Wetlands, Reserves & Landcare Committee
Bobs Farm Public Hall Committee	Medowie Community Centre Committee
Communicate Port Stephens Committee	Medowie Tidy Towns & Cycleway Committee
Corlette Headland Committee	Nelson Bay Senior Citizens Hall Committee
Corlette Reserves & Hall 355(c) Committee	Nelson Bay West Parkcare Committee
Fern Bay Public Hall, Reserves and Tidy Towns Committee	Ngioka Centre Committee
Fingal Bay Parks & Reserves Committee	Port Stephens Adult Choir Committee
Hinton School of Arts Committee	Port Stephens Australia Day Celebrations Coordinating Committee
Karuah Tidy Towns, Parks Reserves & Wetlands Committee	Shoal Bay Beach Preservation Committee

¹⁸ Comprises senior, experienced staff and is chaired by the Manager, Business & Community Relations

¹⁹ Worimi Local Aboriginal Land Council and Karuah Local Aboriginal Land Council have membership along with the Mayor and some senior staff.

Port Stephens Sister Cities' Committee	Soldiers Point - Salamander Bay Parks, Reserves and Hall Committee (closed January 2011)
Port Stephens Community Band Committee	Soldiers Point - Salamander Bay Tidy Towns and Landcare Committee
Port Stephens Heritage Advisory Committee	Tanilba Bay Parks, Reserves & Hall Committee
Port Stephens Native Flora Garden Committee	Tanilba Bay Senior Citizens Hall Management Committee
Raymond Terrace Parks, Reserves & Tidy Towns Committee	Taylors Beach Reserves, Tidy Towns & Landcare Committee
Raymond Terrace Senior Citizens Hall Management Committee	Tilligerry Aquatic Centre Advisory Committee
Salamander Ecology Group (Committee closed July 2011)	Tilligerry Community Centre Committee (Changed to Lemon Tree Passage Old School Centre Committee April 2011)
Salt Ash Community Hall Committee	Tomaree Education Complex Multi-Purpose Centre Committee
Salt Ash Sports Ground Committee	Tilligerry Tidy Towns and Landcare Committee
Seaham School of Arts and Community Hall Committee	West Ward Cemeteries Committee
Seaham Hall Committee	Williamstown Public Hall Committee
Seaham Park & Wetlands Committee (name change April 2011)	Financial Assistance Community Grants Panel
Karuah Community Centre Committee (New committee from April 2011)	Tomaree Cemeteries Committee
Port Stephens Strategic Arts & Cultural Committee	

There are five sports councils that collaborate to plan and manage Council's sporting facilities.

Medowie Sports Council
Port Stephens Sports Council
Raymond Terrace Sports Council
Rural West Sports Council
Tilligerry Sports Council
Tomaree Sports Council

Examples of Council's community collaboration and partnerships include:

- 2009 2-day Futures Forum that determined the framework for the Port Stephens Local Environment Plan
- 2010 Ward-based community workshops to determine the Community Strategic Plan
- 2010 State Agencies Forum to determine what they would contribute to in the Community Strategic Plan
- 2011-2012 community workshops to determine Council service levels across almost 55 service packages for the Sustainability Review of Council

Advocating for Facilities and Services

Port Stephens Council convenes the Port Stephens Interagency, a forum of more than 200 representatives of service providers across the Hunter Region that meets five times each year. Its focus is on sharing data to plan coordinated delivery of social and other support services to the Port Stephens community.

Councillors and senior executives of Council also participate in or belong to a number of regional committees and groups that work collaboratively on planning, service provision and monitoring.

Table 13: Regional Committees

Committee	Purpose
Community Safety Precinct Committee	To provide a forum for local community members, service providers, businesses and the Police to discuss issues and appropriate strategies relating to crime and community safety.
Comprehensive Koala Plan of Management Implementation Committee	Responsible for overseeing the implementation of the Port Stephens Council Comprehensive Koala Plan of Management.
Public Libraries NSW Association & Cooperative Library Advisory Committee	Country Public Libraries Association constitution requires a Councillor representative. This Association provides support for country public libraries. The Joint Library Advisory Committee's constitution also requires a Councillor representative in line with the Newcastle Regional Library agreement.
Gloucester Coal Seam Gas Project – Community Consultative Committee	The purpose of the committee is to provide a forum for representatives to discuss the Project with the company (Lucas Energy)
Hunter Councils	To discuss regional issues in the Hunter
Hunter Councils Board Advisory Groups.	Economic Development & Infrastructure Community & Cultural. Environment. Each of the Advisory Groups has input into the development and implementation of strategic and regional positions that will enhance the Hunter Region.
Hunter Community Reference Group of the Central Rivers Catchment Management Authority (Note: New Group with the appointment for an 18 month period with extension options.	This group allows Local Government to have presentation on the sub-committee to operate in an advisory capacity providing information and recommendations to the Catchment Management Authority Board.
Hunter Water Corporation Community Consultative Committee	This committee is an advisory committee to Hunter Water Corporation.

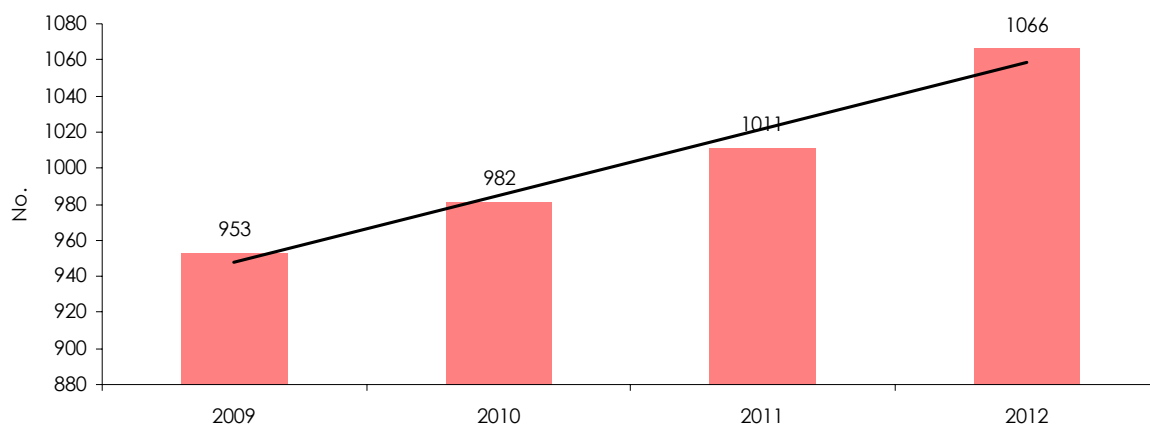
Committee	Purpose
Joint Regional Planning Panel	To consider development applications referred to the Panel under the legislation for development applications for the Port Stephens Local Government area. The Panel comprises of three State members and two Councillors. The term is for three years for each Panel member, commencing July 2009.
Karuah Working Together Inc.	The committee is a peak group comprising representation of key organisations, businesses and industry representatives in Karuah. The committee is responsible for ensuring community and economic development activities are coordinated in accordance with local needs, trends and opportunities with Council's Economic Development Strategy and as specified in the Karuah Strategic Plan.
Local Development Committee	Local Traffic Committee providing advice to Council on development.
Local Traffic Committee	This is an RMS-based committee which allows Council to have delegated authority to install or remove regulatory sign posting on public roads.
Lower Hunter Bushfire Management Committee	The committee is a legislative requirement and is to discuss direction across local government areas and across agencies in regard to bushfire management.
Lower Hunter Zone Liaison Committee	To review the progress of the service level agreement between Port Stephens Council and NSW Rural Fire Service in the Local Government Area.
Lower Tilligerry Floodplain Risk Management Committee	To oversee the flood studies for the Tilligerry Creek catchment
Marine Parks Advisory Panel Ministerial Appointment	Community Consultative Committee regarding the Marine Park in Port Stephens.
Medowie Floodplain Management Committee	This committee will provide advice and recommendations to Council.
National Parks & Wildlife Service Regional Advisory Committee Ministerial Appointment	This is a community reference group run by National Parks & Wildlife Service. It is not a Council committee.
Nelson Bay Adult Education Committee (Change name to Nelson Bay Community College)	This committee is an advisory committee for Adult Education.
Newcastle Airport Joint Sub- Committee	The purpose of this committee is to allow Port Stephens and Newcastle City Councils the opportunity to discuss the future direction of the Airport.
North Coast NSW Regional Tourism Board	To work with tourism bodies and groups on a regional basis.

Committee	Purpose
Port Stephens Economic Development Advisory Panel	Act as a communication and advisory mechanism to Council on relevant Economic Development issues. Oversee the review and implementation of the Economic Development Strategy.
Port Stephens Futures Strategy Reference Group	Advise Council on the progressive preparation of the Futures Strategy which is a foundation for the new Comprehensive LEP for Port Stephens and expresses long term outcomes and directions for the Local Government Area.
Port Stephens Transport Forum	The Ministry for Transport convenes these forums which have been established in most LGAs throughout NSW. It provides the opportunity for local transport providers (e.g. community transport, bus and taxi operators) and local residents to discuss local and regional transport-related issues and to formulate appropriate strategies to more effectively improve the delivery of existing public transport services in meeting the community's transport needs.
Port Stephens Domestic Violence Committee	To raise awareness of the issues surrounding domestic violence and enhance service provision to victims by developing and maintaining effective interagency strategies.
Port Stephens East Local Health Committee	To ensure that the population of the Tomaree Peninsula has appropriate access to a suitable baseline level of health services and facilities to meet their existing and future health needs.
Port Stephens West Local Health Committee	To ensure that the population of the Western area of Port Stephens (ie. east of Tomaree Peninsula) has appropriate access to a suitable baseline level of health services and facilities to meet their existing and future health needs.
Port Stephens Tourism Joint Venture Committee	This committee is the liaison between Port Stephens Council and Port Stephens Tourism Ltd for the promotion of tourism in the Port Stephens LGA.
Port Stephens Tourism Strategy Joint Working Party	The joint working party was established between Council and Port Stephens Tourism Ltd to develop an implementation plan for the Tourism Strategy.
Port Stephens/Myall Lakes Estuary and Coastal Zone Management Committee	This committee includes representatives from Great Lakes Council and is responsible for long term planning for the estuary and the coastline.
Sabre Jet Committee	The purpose of the committee is to assist with planning for a response to the future of the Sabre Jet. This committee has a sunset clause.

Committee	Purpose
Urban Animal Management Committee	This committee seeks to develop local strategies to better manage domestic dogs.
Tilligerry Creek Catchment Committee	To develop and implement the Tilligerry Catchment Management Plan which will result in improved water quality in Tilligerry Creek.
Windeyers Creek Catchment Committee	To develop catchment plans that when implemented, result in catchment improvements.
Worimi Conservation Lands Board of Management – Ministerial Appointment	To oversee the management of the lands owned by the Aboriginal owners and leased back to the NSW Government.

Community members serve in many capacities on Council's Committees (355c Committees, Sports Council Delegates, Sporting Club Volunteers) and numbers have increased in the last four years. In 2011 across the Port Stephens LGA there were 8,652 volunteers.²⁰

Council's Community Volunteers - All Categories - 2009-2012



Graph 5: Council's Community Volunteers

Community Indicator	Outcome
Community satisfaction with engagement in decision-making	Council only: increase in satisfaction from 57.02% to 60.00% between 2008 and 2012

²⁰ Australian Bureau of Statistics Census 2011

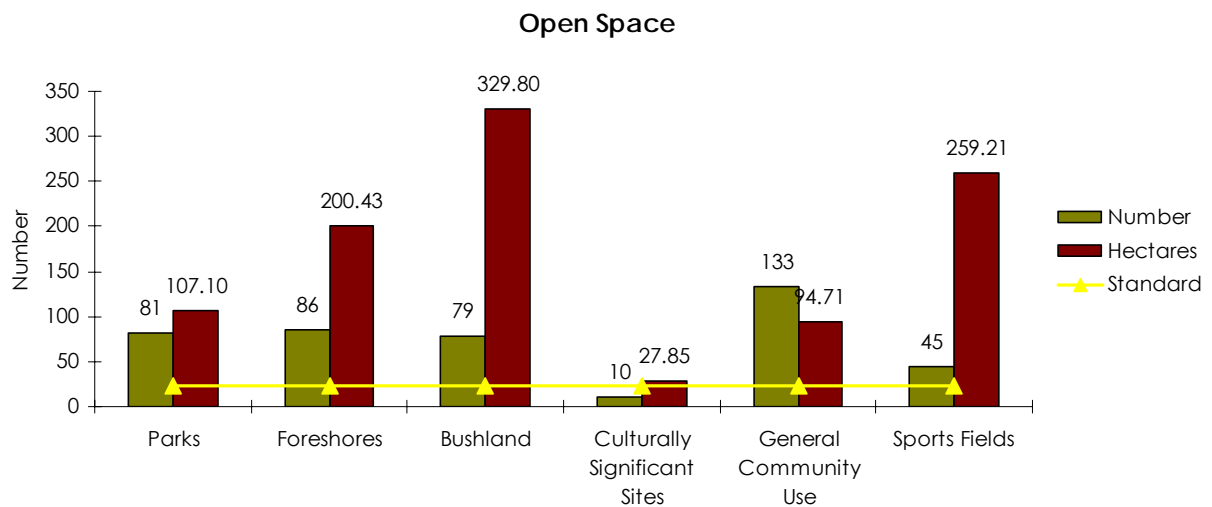
Our Lifestyle

Theme: Recreation, Leisure, Arts and Culture

Strategic Direction: Port Stephens has a diverse range of passive and active lifestyle opportunities that are considered by users to be safe, convenient, reliable and affordable.

Port Stephens LGA provides for both **active** and **passive** lifestyle choices for residents and visitors, as well as opportunities for **community service** and participation.

Lifestyle in Port Stephens – Active



Graph 6: Open Space

Parks and Reserves can generally be used for active and passive recreational purposes. Graph 5 compares categories of open space in the Port Stephens LGA to the general standard of 3 hectares per 1,000 residents.

Also included as open space are watercourses (21) 298.09 hectares; and wetlands (21) 3.421 hectares.

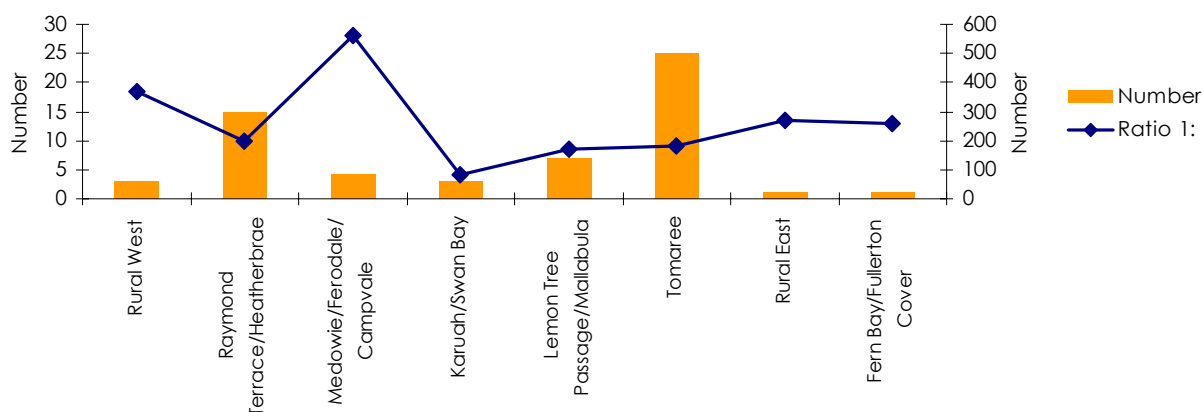
The LGA has 63 **playgrounds** with a standard of 1 playground to every 216 children.

Graph 7: Ratio of Playgrounds to Standard

Birubi Sands Reserve



Number of Playgrounds & Ratio of Playgrounds to Standard 1 : 216 Children



Nelson Bay Foreshore Playground

Council-owned sporting facilities are shown in the table below.

Netball courts	4 complexes, 28 courts
Skate parks	5
BMX tracks	1
Sports fields	46 fields
Tennis courts	13 facilities, 45 tennis courts
Croquet courts	1 complex
Equestrian Centre	1 centre
Swimming facilities	3 complexes
Cricket nets	8
Equestrian Centres	2

In addition to Council-owned facilities there are numerous **sporting facilities** such as swimming pools and gymnasiums in hotels, motels and holiday parks across the LGA.

The following sports are known to be played in the Port Stephens LGA: hockey, cricket, tennis, rugby union, rugby league, Australian Rules football, soccer, athletics, croquet, golf, lawn bowls, yachting, game fishing, horse riding, bocce, triathlons, water polo, swimming, bridge and surfing. There are surf club amenities at Birubi and Fingal Bay.



Birubi Point Surf Life Saving Club

Port Stephens LGA has significant **waterways** for recreational yachting, boating and fishing, and includes 12 wharfs (one currently closed for repairs), 17 boat launch sites (25 lanes), 4.9 kilometres of sea walls, 4 sewerage pump-outs, 2 tidal swimming enclosures and 4 boardwalks (1.5 kilometres).

Recreational cycling and walking facilities include footpaths and cycle ways.

Table 14: Footpaths & Cycleways

	2008-2009	2011-2012
Footpaths: m2	94,246.87	100,700.67
Cycle ways: km	23.8	43.8

The LGA is home to the Hunter Valley Gliding Club at Seaham and the Hunter Motor Cycle Club at Raymond Terrace, together with the Raymond Terrace Racing Pigeon Club.

There are several clubs in Port Stephens devoted to dancing (all forms), tai chi, model aeroplanes and walking for pleasure, and private gymnasiums and slimming groups.

Lifestyle in Port Stephens – Passive

Port Stephens Council operates four library services: Raymond Terrace, Tomaree, Tilligerry Community Library, and the Mobile Library.

Library operation, management, collection and technology benchmark against the Australian Public Libraries Standard. The table below indicates the performance of Port Stephens Council's public libraries from 2008-2009 to 2010-2011. (Note: data for 2011-2012 are not available at the time of compilation of these statistics.)

Council supported Lifestyle outcomes:

- Established the Strategic Cultural Committee in 2009
- Established Lifestyle Committees in each planning district of the LGA
- Funded Community, Cultural and Aboriginal Projects annual through competitive grants
- Established a web site for culture and the arts to connect regional participants in the arts
- Converted the upstairs mezzanine space in the Administration Building to the Mezzanine Gallery and holds up to 10 exhibitions annually in that space
- Convenes and supports the Sports Councils meeting program
- Convenes and supports Parks & Halls Forums
- Delivering capital works programs for lifestyle facilities and services

Table 15: Libraries - Performance against Standard

Performance Indicator – Library Collection and Technology ²¹	2008-2009	2009-2010	2010-2011
Minimum number of qualified staff members per population served. Target is 1 librarian/qualified staff member (FTE) per 10,000 population or part thereof	1 FTE per 21,821	1 FTE per 21,821	1 FTE per 21,821
Expenditure on library materials per capita per annum. Target is \$5.40 pc pa	\$3.60	\$3.60	\$2.89
Collection items per capita. Target = 2	1.5	1.5	1.47
Age of collection (last 5 years): Target = 50% of collection items purchased in last five years	59.55%	58.40%	43%
Loans per head of population. Target = 8.4	7.62	7.54	6.5
Turnover of stock - loans per volume (collection items held). Target = 4.4	5.7	5.2	4.4
Personal computers (PC) for public access to the internet: 1 PC per 3,000 population or part thereof	1 per 2,500	1 per 3,502	1 per 3,637

²¹ <http://www.alia.org.au/publiclibraries/>



Tomaree Library & Community Centre

Most religious denominations are represented in the Port Stephens LGA and there are many service clubs and activities as shown in the table below.²²

Apex Club	Port Stephens Bridge Club
Community Health Centre	Rock 'n Roll Club
Country Women's Association	Rotary (3 clubs)
Legacy Widows Club	Marine Rescue
Lions Club-Nelson Bay	Salvation Army
Lions Club-Soldier's Point	Samaritans
Lions Club-Tilligerry	Social & Welfare Club
Meals on Wheels	St Vincent de Paul
PCYC	Toastmasters-Port Stephens
Port Stephens Community Band	Tomaree Musical Theatre Co
Port Stephens Community Arts Centre	Tomaree Neighbourhood Centre
Port Stephens Adult Choir	Tomaree Peninsula Photography Club
Port Stephens Friendship Group	Torchbearers For Legacy
Port Stephens Historical Society	View Club
Port Stephens Family History Society	Walking For Pleasure
Raymond Terrace Historical Society	Mad Monday Quilters
8 Probus Clubs	Port Stephens Dog Club

The LGA also has RSL sub-branch clubs that support ex-service personnel and their families in the region.

The University of the Third Age operates in the LGA, normally at the Tomaree Library & Community Centre. Port Stephens Council runs a computing for seniors program at its Communicate Port Stephens computer rooms in Raymond Terrace.

²² This table is representative only.

Port Stephens Council has 22 community halls, 3 senior citizens centres and 8 community centres that are regularly used by clubs and societies for recreational and lifestyle activities.

Heritage

Non-Aboriginal cultural heritage in Port Stephens includes historic villages, heritage conservation areas at Raymond Terrace, Tipperary Hill and Hinton, rural landscapes,

Council supports Aboriginal heritage and culture through:

- Aboriginal Project Fund;
- Aboriginal Strategic Committee;
- NAIDOC Week;
- Aboriginal Art Exhibition annually;
- Staff training module on engaging Indigenous communities;
- Port Stephens Community Based Heritage Study;
- Engagement of a Heritage Advisory Consultant on an ongoing basis;
- Implementation of Port Stephens Foreshore Management Plan
- Heritage Action items;
- Ongoing consultation with Local Aboriginal Land Councils;
- Formal acknowledgement of traditional land owners at the opening of Council meetings.

significant early residences such as Tomago House and Tanilba House, lighthouses, churches, cemeteries, war memorials, courthouses, schools, shipwrecks, archaeological remains such as the Irawang Pottery site, cottages and early subdivisions such as Henry Halloran's 1930s development at Tanilba Bay.

Many sites and areas of significance to **Aboriginal people** are located within Port Stephens, including shell middens, scarred trees, occupation and ceremonial sites and places of spiritual value. The exact location of the various sites is restricted information. In the area stretching from Wallis Lake to Newcastle there are 37 recorded Ceremonial Sites (stone arrangements, bora grounds, carved trees and burial sites), 115 recorded campsites (mia mia, scarred tree, open campsite, shelter with deposit, well, fish trap, abraded grooves and quarries) and over 100 middens.

Port Stephens is also home to the Murrook Aboriginal Culture Centre, and to the Worimi and Karuah Local Aboriginal Land Councils.

Council's Aboriginal Strategic Committee and the Worimi Local Aboriginal Land Council have commenced work on capturing, via a map, areas in Port Stephens which are of cultural significance to the Worimi Nation. It is linked to Council's development and assessment planning framework to ensure due recognition is given to identifying potential Aboriginal impacts.

The Port Stephens Community Based Heritage Study completed in 2003 identified sites of heritage significance in the LGA. Many of these are included in the Heritage Schedule of the Port Stephens Local Environmental Plan.

The Mindaribba Local Aboriginal Land Council lands touch the western boundary of the LGA.

Community Indicator	Outcome
Participation in sporting activities	Data not yet available – arrangements to be made with Sports Councils to collect participation statistics
Access to parks and open spaces	Port Stephens LGA above average in all defined categories
Participation in arts & cultural activities	Data not available at LGA level

Our Environment

Theme: Environmental Management

Strategic Direction: Maintain high levels of biodiversity and engage the community in protecting and enriching the environment.

Environmental management includes managing and monitoring:

- Noise, energy use, water
- Land use
- Primary Industries & Natural Resources
- Waste Management & Recycling
- Biodiversity
- Sustainable Development

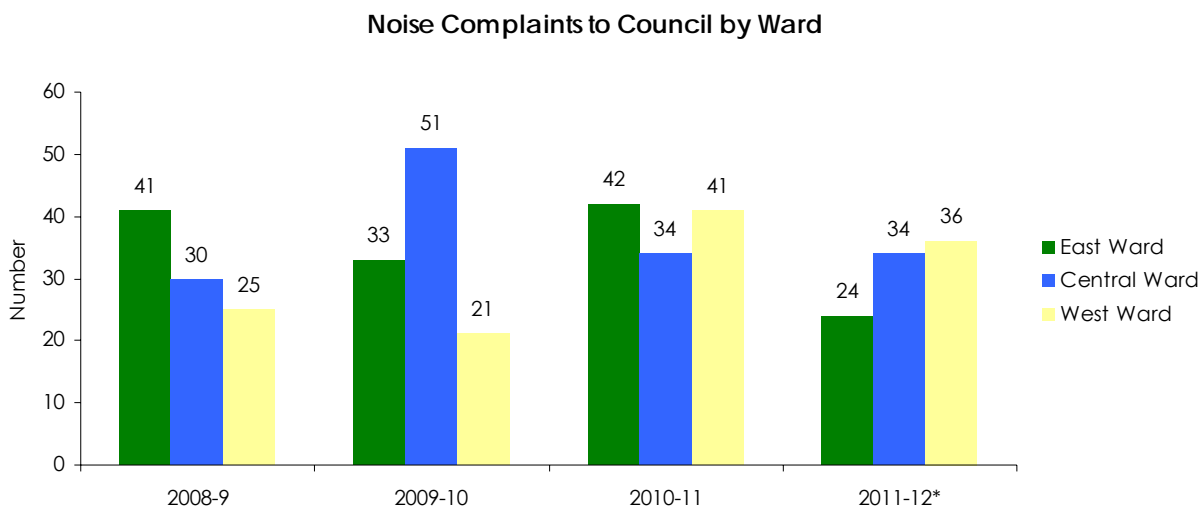
Data related to these categories are available in detail in the Port Stephens State of Environment Report 2009-2010.²³

Noise

Noise is usually defined as unwanted sound. When this sound unreasonably intrudes into people's daily activity, it is considered to be noise pollution.

31.5% of respondents to the Port Stephens Community Profile 2006 identified peace and quiet as the most liked aspect overall about living in Port Stephens.

Graph 8: Noise Complaints by Ward



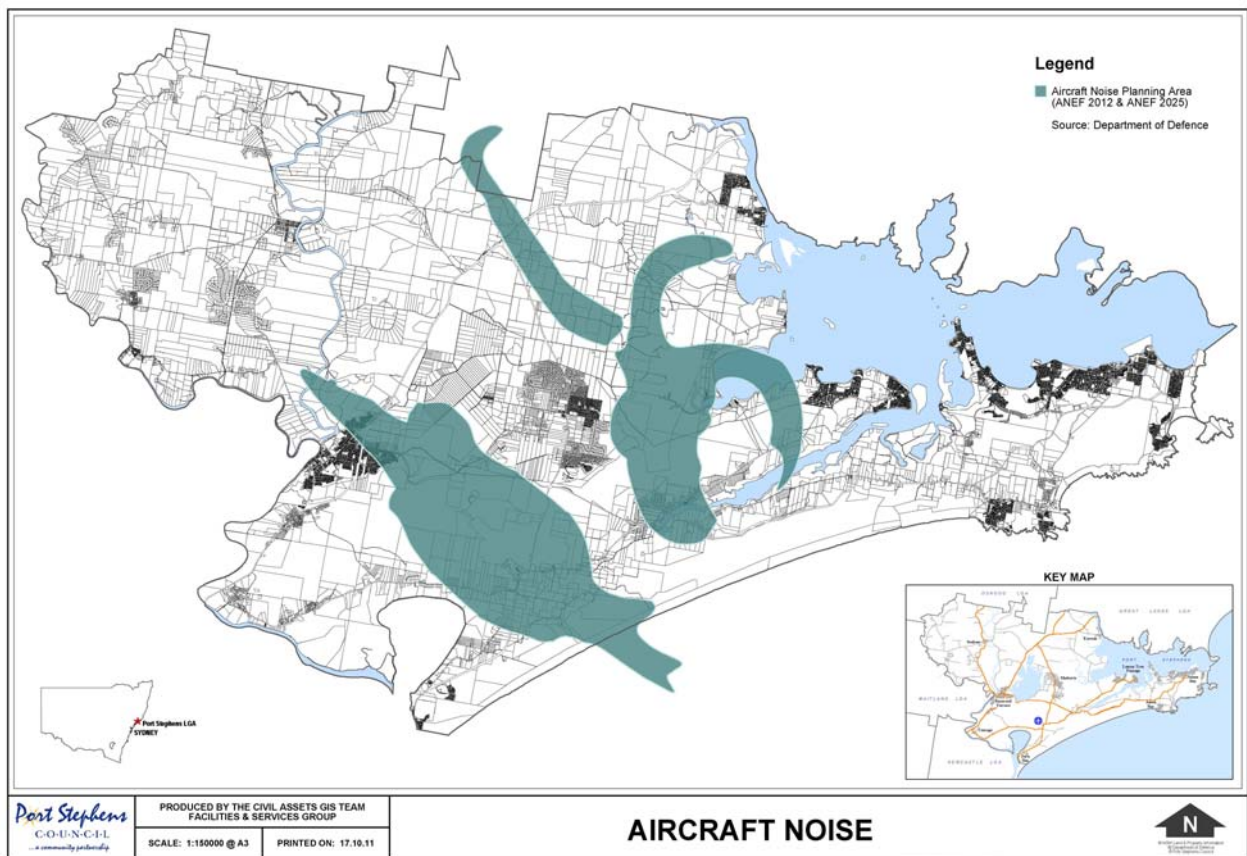
**10 months to April 2012*

²³

http://www.portstephens.nsw.gov.au/index.php?option=com_jentlacontent&view=enhanced&id=1132984&Itemid=4026

Common sources of neighbourhood noise in Port Stephens include traffic, barking dogs, air conditioners, roosters and birds, industrial noise, machinery and power tools, lawn mowers, trail bikes, noisy neighbours, garbage collection, TV and music noise from neighbours, noisy parties and burglar and car alarms. On average 57.2% of complaints related to nuisance noise from dogs, 36.4% to miscellaneous noise generated on private property and 6.4% complaints related to noise from the use of motorcycles on private property.

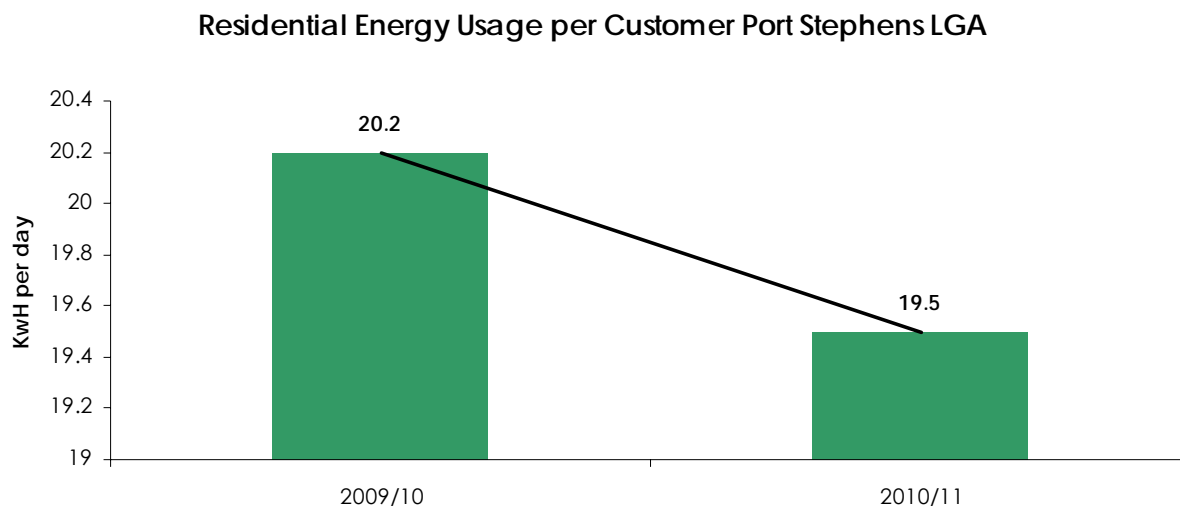
Military aircraft noise is also a significant concern to residents in certain locations within the LGA. The 2006 Port Stephens Community Profile identified that aircraft noise was mainly an issue of concern for Raymond Terrace (11.2% of respondents) followed closely by Rural East (10.9% of respondents). However, in 2010 changes to the aircraft noise contours proposed for the Joint Strike Fighter by Department of Defence extended the area affected as is shown in the map below.



Map 2: Aircraft Noise

Energy Use

Average household electricity usage for the Port Stephens LGA is shown in the graph below.²⁴ There has been a reduction of 3.5% in residential daily usage.



Graph 9: Energy Use - Port Stephens Residential Use

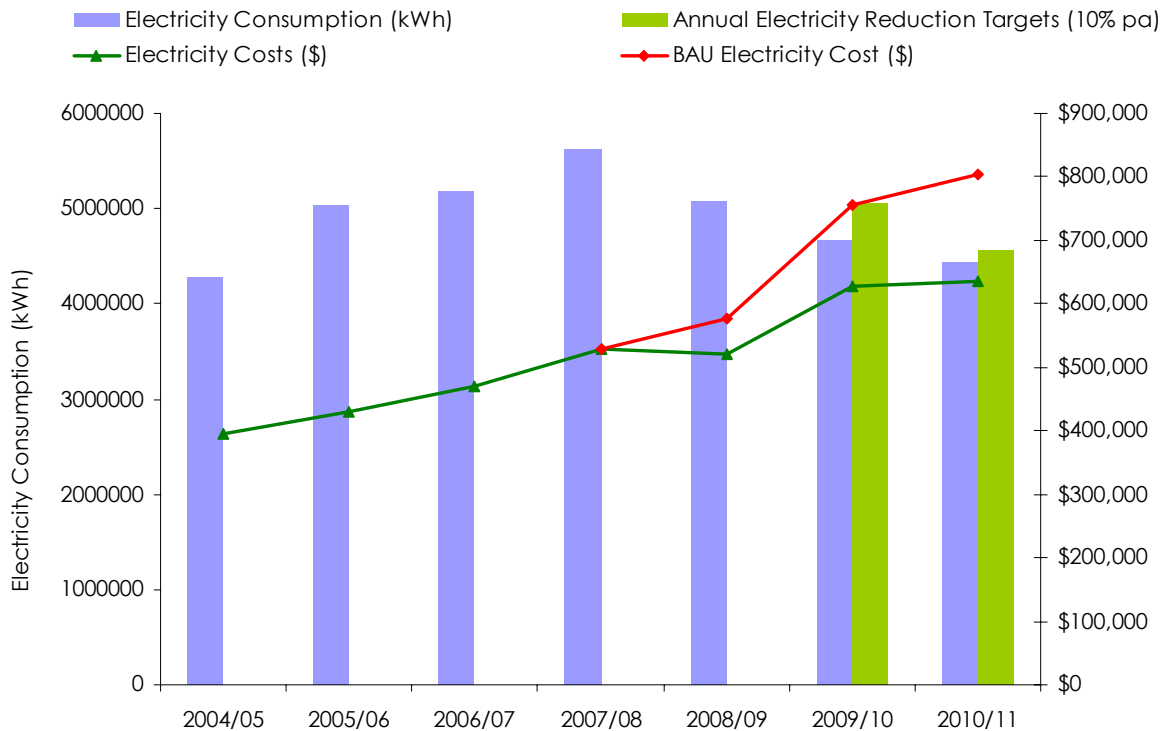
This has resulted in a reduction in greenhouse gas emissions by residential customers of 4436.66 tonnes from 2009-2010 to 2010-2011 or 1.89%.

- In 2009-2010 Council set a target to reduce electricity consumption at its 12 largest sites by 10% p.a.
- In 2009-2010 Council established a cross-functional team to oversee energy usage reduction program and report monthly to Executive
- In 2011 Council used a 'reverse-auction' tender process for electricity supply which resulted in savings of \$600,000 in energy costs

Council has been measuring its own electricity usage since 2004 as shown in the graph below. The total reduction in energy consumption since 2007-2008 is 20%, achieving savings since 2008-2009 of \$500,000.

²⁴ <http://www.ausgrid.com.au/Common/About-us/Sharing-information/Data-to-share/Average-electricity-use.aspx>
Data not available for other years or for other types of customers eg business.

Annual Electricity Consumption vs Electricity Cost (12 major facilities) - 2004-2011



Graph 10: Council's Energy Use

Biodiversity²⁵

Between 1 September 2008 and 14 May 2012 a total of 638 animals and plants were recorded in Port Stephens LGA as sensitive species.²⁶ Of those the following were considered endangered or threatened species:

Table 16: Threatened Fauna & Flora

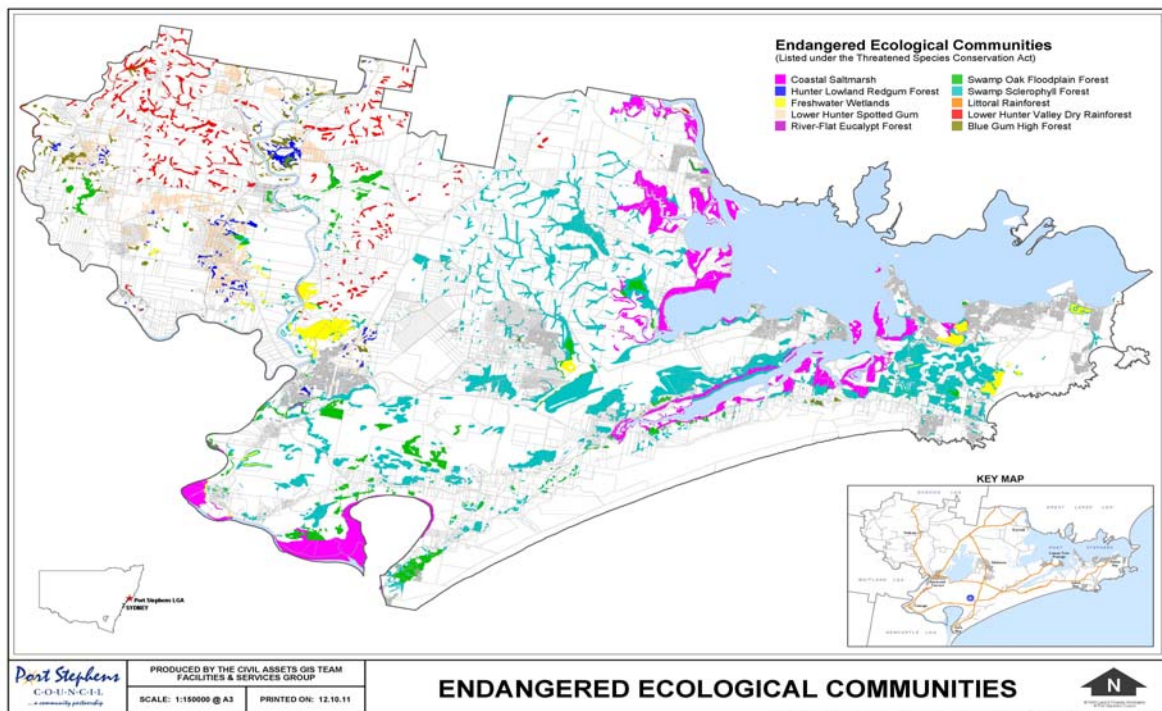
Fauna	Flora
Wallum Froglet	Coast Groundsel
Bush Stone-curlew	Maundia triglochinos
Sooty Oystercatcher	Villous Mint-bush
Glossy Black-Cockatoo	Netted Bottle Brush
Little Lorikeet	Eucalyptus parramattensis subsp. decadens
Powerful Owl	Leafless Tongue Orchid
Eastern Grass Owl	Sand Doubletail
Speckled Warbler	Rough Doubletail

²⁵ Full descriptions of biodiversity are contained in the Port Stephens Council State of Environment Report 2008

²⁶ <http://www.bionet.nsw.gov.au/>

Fauna	Flora
White-fronted Chat	Tall Knotweed
Grey-crowned Babbler (eastern subspecies)	Trailing Woodruff
Varied Sittella	
Spotted-tailed Quoll	
Brush-tailed Phascogale	
Koala	
Squirrel Glider	
Grey-headed Flying-fox	
Yellow-bellied Sheath-tail-bat	
Eastern Freetail-bat	
Eastern False Pipistrelle	
Little Bentwing-bat	
Eastern Bentwing-bat	
Southern Myotis	
Greater Broad-nosed Bat	
Giant Dragonfly	

Terrestrial biodiversity in Port Stephens is impacted by land clearing for agriculture, mining and urban development, and habitat and corridor fragmentation. Invasion by introduced species (cats, rabbits) and altered fire regimes also have affected native terrestrial biodiversity.

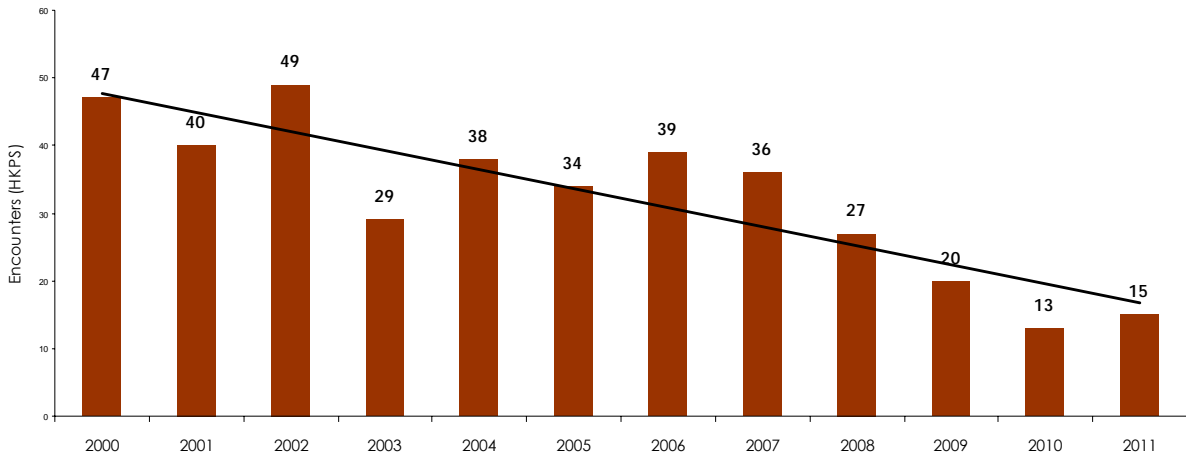


Map 3: Endangered Ecological Communities

Koala numbers indicate the overall health of the terrestrial ecosystem and the graph below shows the trend in koala encounters.

Graph 11: Koala Encounters

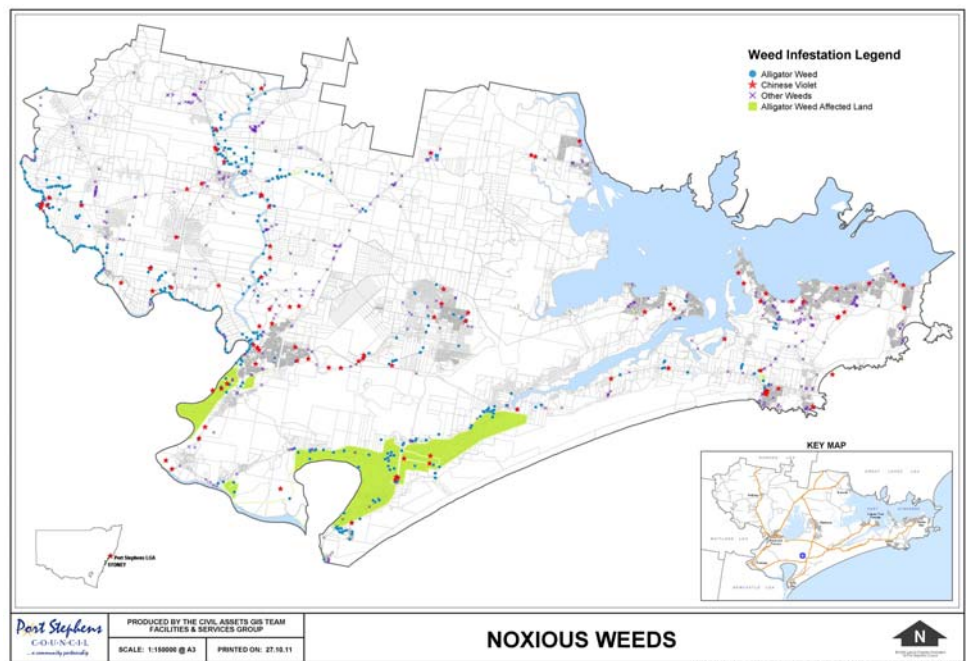
Tilligerry Peninsula Koala Encounters 2000 - 2011



Port Stephens' **freshwater ecosystems** are considered in generally good condition. They include wetlands, coastal freshwater swamps, marshes, hanging swamps, and intermittently inundated floodplains along the Hunter and Williams Rivers. The freshwater ecosystems can be threatened by declining water quality, reclamation and drainage, clearing, cropping and grazing, altered hydrology and introduced species.

In Port Stephens the freshwater ecosystems are threatened by weed invasion, particularly the Alligator Weed, Ludwigia, Salvinia and Water Hyacinth.

Map 4: Extent of Noxious Weeds

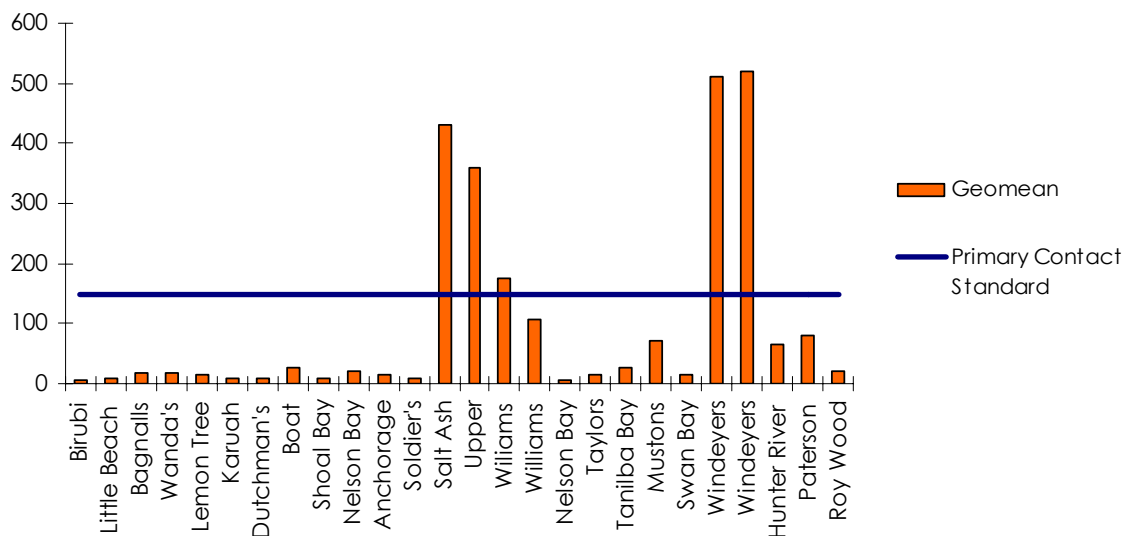


Coast and estuarine ecosystems' water quality is considered good and meets the Australian and New Zealand water quality guidelines. Agricultural runoff, stormwater pollution, beach erosion (especially at Shoal Bay) and discharge of treated sewage effluent can affect water quality.

Water Quality

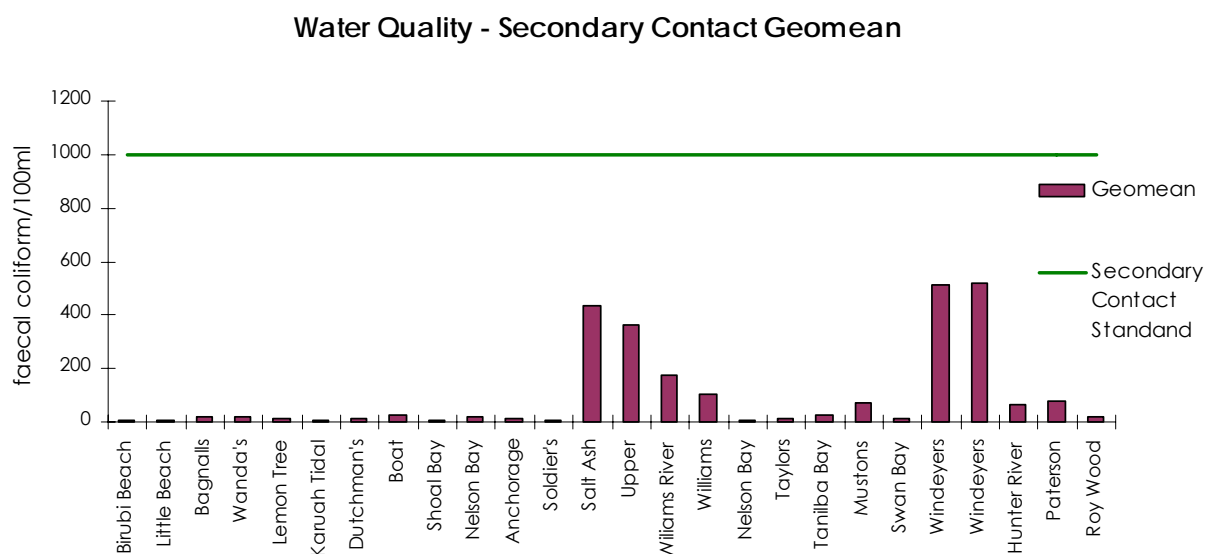
Water quality is generally good across the LGA. The ANZECC Guidelines for Fresh & Marine Water Quality defines water quality across a number of variables. The presence or absence of faecal coliform microbes has been used in the graphs below²⁷. Primary contact standard is <150 faecal coliform organisms per 100 mL. Primary contact means contact with water for swimming, diving, and water skiing. Secondary contact means contact with water is fine for boating, fishing, paddling, wading – users are unlikely to swallow water. The secondary contact standard is <1,000 faecal coliform organisms per 100mL.

Graph 12: Water Quality – Primary Contact



²⁷ Measurements for the sites were taken from September 2008 to the present.

Graph 13: Water Quality - Secondary Contact



Potable Water & Sewerage²⁸

Port Stephens LGA potable water supply is the responsibility of Hunter Water Corporation. Grahamstown Dam is an off-river storage that is primarily used to store water extracted from the Williams River. As well as rain, the dam also receives inflows from its own catchment. The other key components of the Grahamstown Dam supply scheme are:

- Seaham Weir, which limits the upstream movement of tidal saltwater
- Balickera Canal and pumping station, which are used to transfer water from the Williams River to Grahamstown Dam
- Campvale Pumping Station
- George Schroder Pumping Station and delivery mains, which are used to deliver water from the dam to the water treatment plant
- Grahamstown Water Treatment Plant

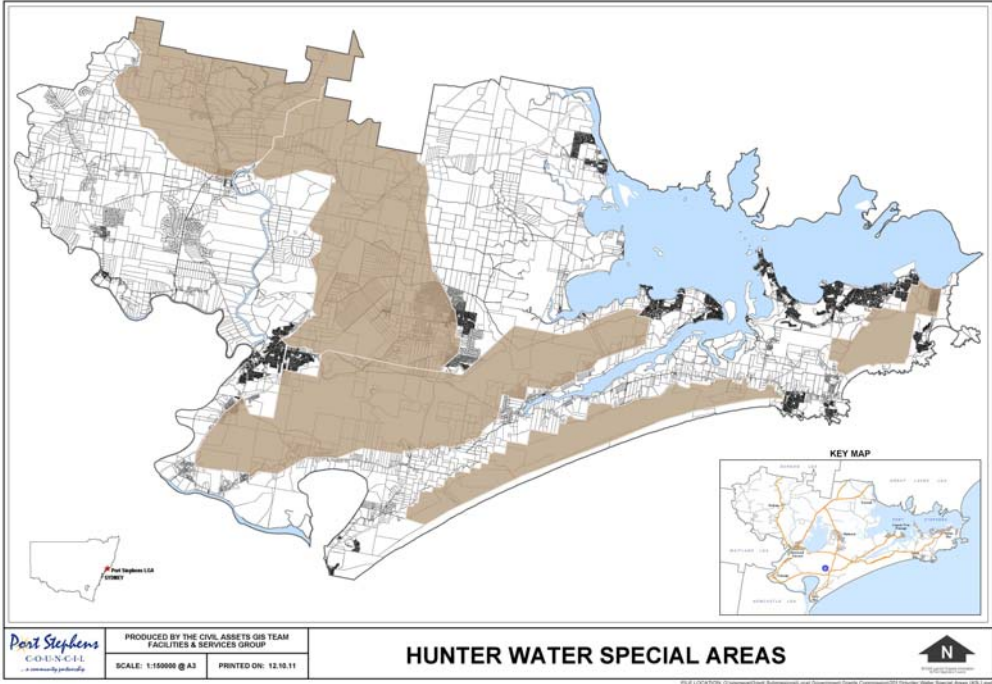
Other sources of potable water are:

- Tomago Sandbeds are an underground water source in the LGA that are parallel to the coast between Newcastle and Port Stephens, starting at Tomago and extending north-east for 25 kilometres to Lemon Tree Passage
- Anna Bay Sandbeds consist of 21 bores within the Anna Bay, Glovers Hill and Nelson Bay sandbeds. Extracted water is treated at the Anna Bay and Glovers Hill Water Treatment Plants, each with a capacity to treat and deliver up to 12 megalitres per day

As a result of the LGA's importance to the water supply of the Lower Hunter Region, there are special constraints on land usage related to the operations and catchments under the jurisdiction of the Hunter Water Corporation.

²⁸ <http://www.hunterwater.com.au/>

Map 5: Hunter Water Special Areas



Sewerage is also the responsibility of Hunter Water Corporation, except for On Site Sewerage Management (Septic systems) which is the responsibility of Port Stephens Council.

Table 17: On Site Sewerage Management Systems

Year	Total Number On Site Sewerage Management Systems	Number Annual Inspections by Port Stephens Council	Annual Number New Applications for On Site Sewerage Management Systems
2008	4780	881	88
2009	4821	725	62
2010	4874	756	70
2011	4782	826	65
2012	4873	473	34

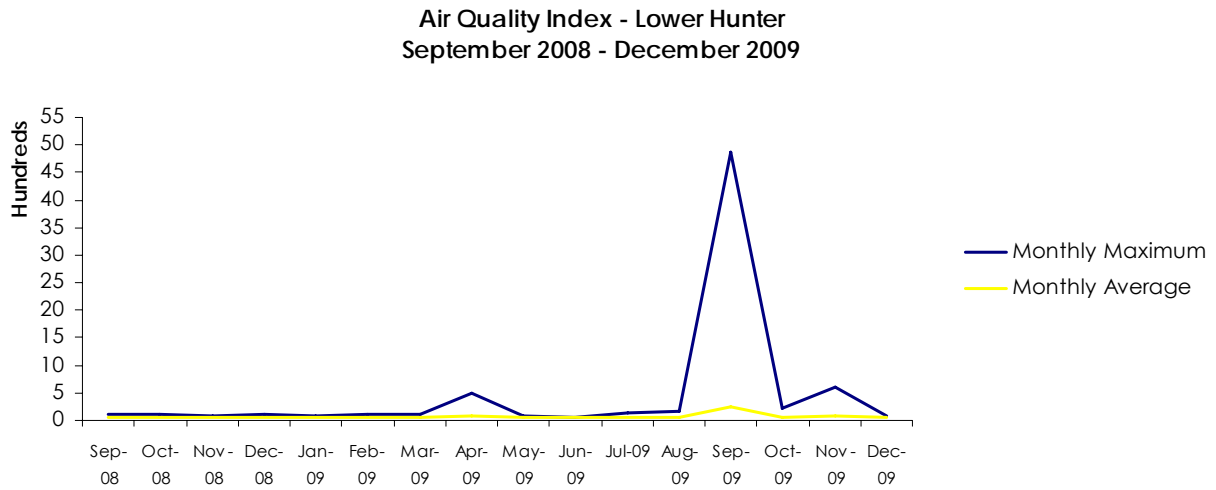
Air Quality

Air quality is not recorded separately for the Port Stephens LGA as it is included in the data for the Lower Hunter Region. The latest available data from the Department of Health²⁹ is to December 2009. It is shown as an index which is derived from scientific measurements of several pollutants: ozone, nitrogen dioxide, carbon monoxide, sulfur dioxide and 2 types of particles: BSP and PM10. An AQI reading above 100 means that at that site at least one pollutant exceeded its permissible threshold value.

²⁹ http://www.healthstats.nsw.gov.au/Indicator/env_airaqi

The spike in the Air Quality Index shown in the graph below relates to the severe dust storm experienced in September 2009 across NSW.

Graph 14: Air Quality Index



Land Use

There are 4 categories of land use in the Port Stephens LGA:

- Residential and Business
- Farming
- Mining
- Community Lands

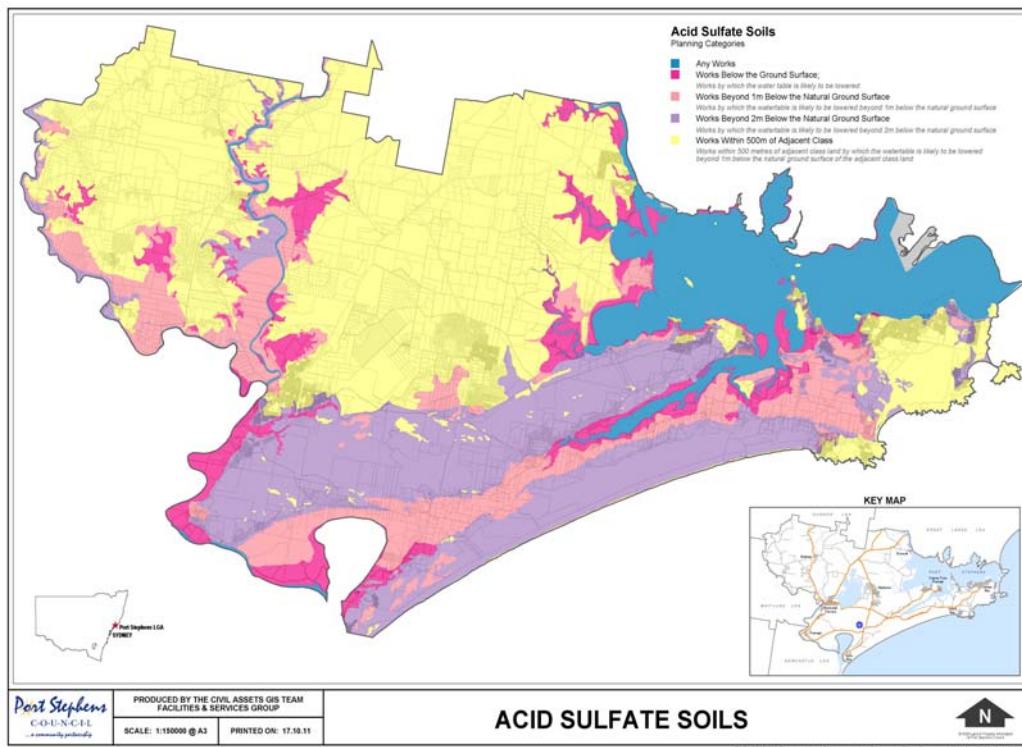
Table 18: Community Lands in LGA

Community Land Managed by PSC	Hectares
Culturally significant	87.5
Sports ground	299
Foreshore	242
Natural area	512
Urban park	95
General Community Use	85
Sub total	13,205
National Parks & Wildlife Service NSW	18,147
State Forest	3,648
Sub total	21,795
TOTAL	23,115.5

Key land management issues in Port Stephens include:

- Land use change;
- Soil erosion;
- Acid Sulfate Soils.

Map 6: Extent of Acid Sulfate Soils



Other forms of land degradation include soil acidification resulting from clearing, pasture improvement and livestock management practices. Soil salinity is also present in Port Stephens.

Feral animals and loss of native vegetation are also key land degradation issues.

Council has:

- Commenced implementation of the Foreshore Management Plan
- Worked with the Port Stephens Marine Park Authority to enhance the Port
- Supported to community groups involved in the maintenance of community land
- Implemented Community Land Master Plans for Nelson Bay
- Foreshore, Raymond Terrace Foreshore, and Mallabula Sports / Pool / Hall Master Plan
- Implemented the Bushfire Hazard Reduction Plan
- Conducted an extensive Bush Regeneration Program
- Responded to incidents of tree vandalism, particularly in foreshore areas
- Implemented a regional baiting program with other councils to combat feral animals

Community Indicator	Outcome
Reduction in greenhouse gas emissions	Reduction of 4436.66 tonnes or 1.89% from 2009-2010 levels
Increased renewable energy consumption	Increase from 160,685 Kwh to 2,723,144 Kwh exported to the grid
Meet 13 State targets for natural resource management	<p>This indicator was based on the previous State Government's State Plan which data do not align however Port Stephens' natural resource management is perceived by its community to be satisfactory:</p> <ul style="list-style-type: none"> • 61.18% think nature reserves, wetland, foreshores & beaches are managed moderately well to very well • 58.7% think monitoring of the environment is done moderately well to very well • 51.1% think environmental planning and education programs are done moderately well to very well • 62.5% think controlling weeds is managed slightly well to very well

Our Environment

Theme: Primary Industries and Natural Resources

Strategic Direction: Primary and extractive industries contribute to sustainable food production, water harvesting, visual amenity, tourism, construction industry and an excellent lifestyle, having regard to environmental protection.

Port Stephens LGA has a combination of rural land and a coastal environment, with agriculture and fishing accounting for 2.5% of employment in the LGA.³⁰

The rural areas of Port Stephens have a range of activities, including horticulture and livestock industries. Agriculture is mainly in Horticulture and Fruit Growing, Grain, Sheep and Beef Cattle Farming and Poultry Farming. Agriculture is mainly in the Rural West, Karuah and Medowie.

Recent regional trends in agribusiness have seen the development of a number of niche areas of production including: goat milk, goat and rabbit meat, native and fresh flowers, herbs, chillies, olives, Echinacea, exotic stud cattle, essential oils, viticulture and Asian vegetables.

In 2005 the State Government established the Port Stephens Great Lakes Marine Park.

The main marine fishing fleet is based at the Nelson Bay Marina and the Fishermen's Co-operative. Aquaculture has been traditionally focused on oyster farming but other forms of aquaculture are seen as major opportunities. Other future opportunities are seen in linking these sectors to the tourism market through the development of a food trail and through rural based B&Bs.

Council:

- Completed in 2010 the Rural Lands Study and incorporated it into the Local Environment Plan
- With the Catchment Management Authority ran a land management course that included information on drain management

Workshops were also run on other land management topics such as fertiliser use

Council:

- Held a workshop to educate landholders about the impacts from excessive fertiliser use on Tilligerry Creek in the context of protection of the oyster industry there
- Implemented the Regional Weeds Strategy
- Implemented a program with land holders to identify and control Alligator Weed, often spread through waterways from livestock.

In the Port Stephens LGA mining is limited however there are a number of supplier links through Port Stephens based engineering companies that are suppliers to the industry.

³⁰ Economic Development Strategy p61.

Holbert's Oyster Supplies is Port Stephens leading oyster growing and processing business. For over five generations the Holbert family has been growing and distributing their award winning oysters to local restaurants and seafood outlets around the Port Stephens area.

During recent years Holbert's Oysters has expanded considerably to be one of, if not the biggest processor of oysters in NSW. This expansion sees their product sent, not only locally but throughout the state, interstate and to export markets.

The Port Stephens Fisheries Institute (PSFI) is located at Taylors Beach approximately 10 km from Nelson Bay in the Port Stephens Council area (32.724 S, 152.146 E). The Institute is approximately 10 km from Nelson Bay, 60 km north-east from Newcastle and 150 km north from Sydney. This Institute is a multi-disciplinary centre with staff from five divisions within Primary Industries based on-site. Divisions and working units include:

- Science and Research
 - Aquaculture Research
 - Aquatic Ecosystems Research
- Fisheries, Compliance & Regional Relations Division
 - Aquaculture Management
 - Fisheries Conservation and Aquaculture
 - Fisheries Officers
- Agriculture, Biosecurity and Mine Safety
 - Aquatic Biosecurity
- Corporate Services
- Strategy, Policy and Communications

There are approximately 90 staff based on-site. In February 2012 ten new graduates joined the Institute.

Community Indicator	Outcome
Contribution of primary industries and natural resources to the Port Stephens economy	No LGA specific data are available however anecdotal evidence of innovations combined with increase in global export focus suggest progress against this indicator

Our Environment

Theme: Waste Management

Strategic Direction: Port Stephens residents have a highly valued, affordable, convenient and results-driven waste and recycling system that does not harm the environment.



Council has contracted its waste collection services through Solo Resource Recovery for the whole of this reporting period. Council operates the Salamander Bay Waste Transfer Station and also has decommissioned landfill sites which are monitored on an ongoing basis.

Salamander Bay Waste Transfer Station

Graph 15: Total Waste - Port Stephens LGA

Total Waste (Tonnes): Port Stephens LGA



Community Indicator	Outcome
Reduction in Waste	Total volume of waste decreased from 2010 by >2,000 tonnes
Increase in recycling	Percentage of recycled to total waste has declined slightly due to change in Regulations in March 2010 requiring more processing. Given increase in LGA population the recycling indicator is deemed to be met.

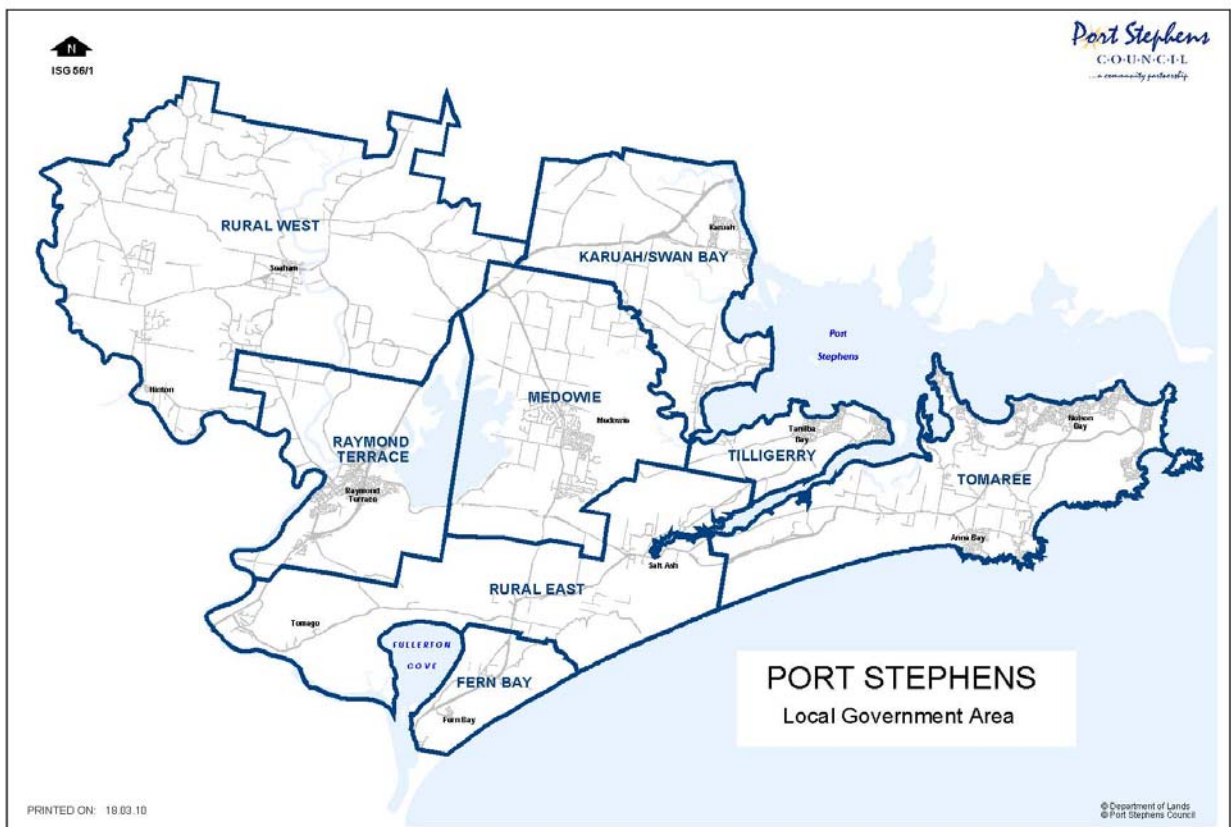
Our Environment

Theme: Sustainable Development

Strategic Direction: Provide clarity about the long term development pattern and capacity of Port Stephens for the development industry, investors and the community; and protect and maintain the unique natural aesthetics and heritage assets of the LGA through compliance enforcement.

Planning

The Port Stephens LGA is divided into **planning districts** as shown in the map below.



Map 7: Port Stephens LGA Planning Districts

Development in the Port Stephens LGA is controlled through a complex of instruments – State and Local – that designate zoning and future development patterns. The NSW Environmental Planning & Assessment Act (EP&A) governs all development in New South Wales.

The NSW Department of Planning through the **Lower Hunter Regional Strategy (LHRS)** has designed Raymond Terrace to be a Major Centre. This means a ... *concentration of business, higher order retailing, employment, professional services and generally including civic functions and facilities. A focal point for subregional road and transport networks and may service a number of districts.*³¹

Specialised centres designated in the LHRS include the Newcastle Airport precinct and the Nelson Bay tourism precinct.³²

The **Port Stephens Local Environment Plan (LEP) 2000** provides for appropriate planning and environmental control over the use and development of land within the LGA in order to uphold and promote the objectives of the EP&A Act. It is a legal instrument and a draft LEP 2012 has been recommended to the Minister for Planning to gazette.

The LHRS provides for additional 12,500 residential dwellings to be built in the next 25 years, with up to 5,000 at North Raymond Terrace, known as Kings Hill.³³ **The Port Stephens Local Environment Plan (Kings Hill, North Raymond Terrace) 2010** was adopted to guide and control this major development.

The Port Stephens Development Control Plan 2007 (DCP) is a suite of documents that provides The DCP supplements the provisions of Port Stephens LEP 2000. The provisions of Port Stephens LEP 2000 prevail over the DCP.

Council has developed a suite of **strategies** to further determine development:

Port Stephens Futures Strategy 2009
Port Stephens Planning Strategy 2011
Karuah Growth Strategy
Medowie Strategy
Anna Bay Strategy & Town Plan
Port Stephens Rural Strategy
Nelson Bay Town Centre Strategy & Foreshore Strategy
Williamstown Defence and Airport Related Employment Zone (DAREZ) Land Use Development Strategy
Nelson Bay Foreshore Master Plan

The following are the **State Environmental Planning Policies (SEPPs)** that apply to the Port Stephens LGA:

SHIREWIDE SEPPs
State Environmental Planning Policy No 1 – Development Standards
State Environmental Planning Policy No 4 – Development without Consent and Miscellaneous Exempt and Complying Development
State Environmental Planning Policy No 6 – Number of Storeys in a Building
State Environmental Planning Policy No 21– Caravan Parks
State Environmental Planning Policy No 30 – Intensive Agriculture
State Environmental Planning Policy No 33 – Hazardous and Offensive Development

³¹ Lower Hunter Regional Strategy p15

³² *ibid*

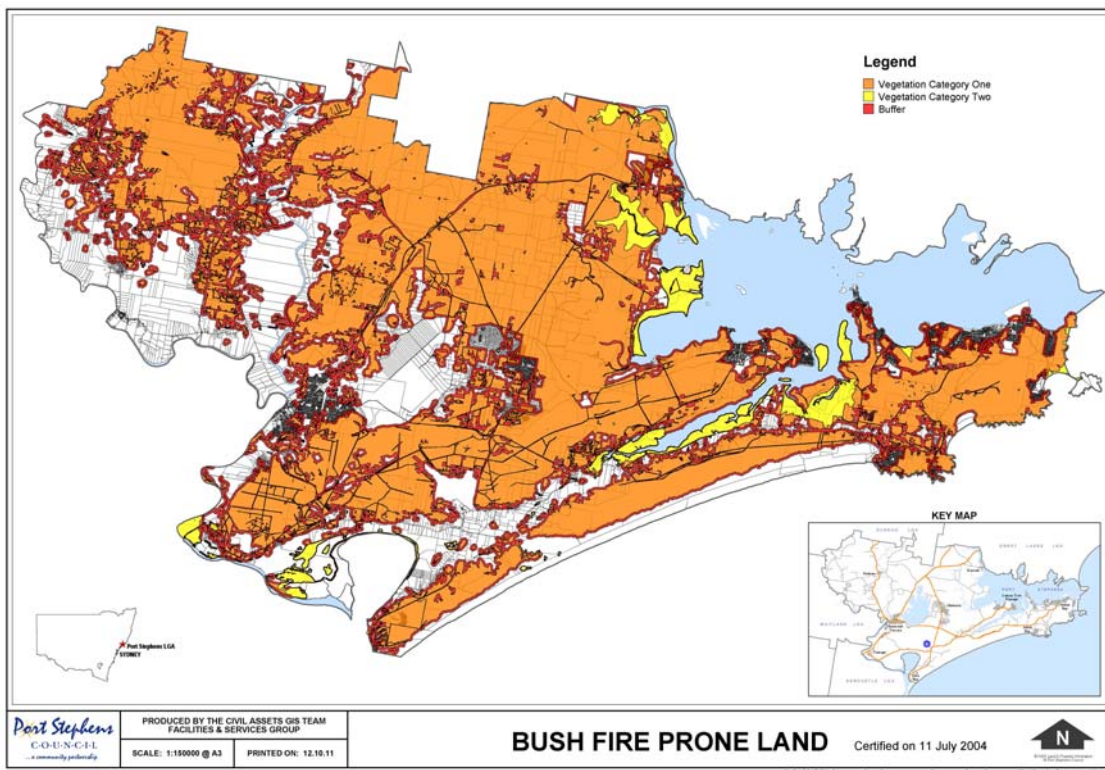
³³ *op.cit.*p25

State Environmental Planning Policy No 36 – Manufactured Home Estate
State Environmental Planning Policy No 44 – Koala Habitat Protection
State Environmental Planning Policy No 50 – Canal Estate Development
State Environmental Planning Policy No 64 – Advertising and Signage
State Environmental Planning Policy No 65 – Design Quality of Residential Flat Development
State Environmental Planning Policy (Major Development) 2005
State Environmental Planning Policy (Building Sustainability Index: BASIX) 2004
State Environmental Planning Policy (Mining, Petroleum Production and Extractive Industries) 2007
State Environmental Planning Policy (Exempt & Complying Development Codes) 2008
State Environmental Planning Policy (Affordable Rental Housing) 2009
State Environmental Planning Policy (Infrastructure) 2007
State Environmental Planning Policy (Rural Lands) 2008
State Environmental Planning Policy (Temporary Structures) 2007

SITE SPECIFIC SEPPs
State Environmental Planning Policy No 5 – Aged and Disability
State Environmental Planning Policy No 8 – Surplus Public Land
State Environmental Planning Policy No. 9 – Group Homes
State Environmental Planning Policy No. 10 – Retention of Low-cost Rental Accommodation
State Environmental Planning Policy No. 11 – Traffic Generating Developments
State Environmental Planning Policy No 14 – Coastal Wetlands
State Environmental Planning Policy No. 15 – Rural Land Sharing Communities
State Environmental Planning Policy No 22 – Shops and Commercial Premises
State Environmental Planning Policy No 32 – Urban Consolidation (Redevelopment of Urban Land)
State Environmental Planning Policy No 34 – Major Employment - Generating Industrial Development
State Environmental Planning Policy No 37 – Continued Mines and Extractive Industries
State Environmental Planning Policy No 45 – Permissibility of Mining
State Environmental Planning Policy No 48 – Major Putrescible Landfill
State Environmental Planning Policy No 55 – Remediation of Land
State Environmental Planning Policy No 62 – Sustainable Aquaculture
Draft State Environmental Planning Policy No 66 – Integration of Land Use and Transport
State Environmental Planning Policy No 70 – Affordable Housing (Revised Schemes)
State Environmental Planning Policy No 71 – Coastal Protection
State Environmental Planning Policy – (ARTC Rail Infrastructure)
State Environmental Planning Policy – (State Significant Development)
State Environmental Planning Policy – (Housing for Seniors or People with Disability) 2004

Port Stephens is subject to several constraints that limit development within the LGA. These are:

Acid Sulfate Soils
Aircraft Noise
Bushfire Prone Land
Endangered Ecological Communities
Flood Prone Land
Hunter Water Special Areas
Heritage
Koala Habitat
Port Stephens – Great Lakes Marine Park
Sea Level Rise – Tidal Inundation
SEPP14 Wetlands
SEPP71 Coastal Protection



Map 8: Port Stephens LGA - Bushfire Prone Land

The composition of dwelling development for the next 20+ years in Port Stephens as determined by the LHRs³⁴ is:

Centres and corridors	Urban Infill	Total infill	New release	Total dwellings
3,300	2,000	5,300	7,200	12,500

³⁴ LHRs p27

In 2009 the State Government amended the EP&A Act:

- to provide for Joint Regional Planning Panels – the Hunter JRPP – to approve developments in Port Stephens above \$ and / or where Council has an interest
- to allow for exempt and complying developments – for small developments that would no longer require a development application; or that meet all criteria for the specific type of development

Since 2008 Council has developed or amended and adopted policies designed to govern sustainable development in the LGA:

- Areas affected by flooding and/or inundation
- Contaminated Land
- Development Application Determination
- Development within Explosives Safe Zone
- Environmental Noise
- Aircraft Noise
- Local Order Decommissioning of Septic Tanks
- Newcastle Airport
- Onsite Sewerage Management
- Sustainability

Table 19: Housing Affordability - Median Rentals

	Sep 2008 Range \$	Mar 2012 Range \$
Median weekly rental 2 bedroom house	210-250	318
Median weekly rental 3 bedroom house	240-290	320-365
Median weekly rental 1 bedroom unit	145	170-175
Median weekly rental 2 bedroom unit	200-205	250-300

Table 20: Housing Affordability - Median Sales

	Sep 2008 Range \$000s	Mar 2012 Range \$000s
All dwelling	270-400	299-400
Strata	242-318	240-303
Non-Strata	275-430	300-444

Community Indicator	Outcome
Housing Affordability	Relatively stable compared to CPI
Quality of Life	Data will be available from survey in November 2012
Environmental Management	Council only: 80.3% of community felt Council monitored the environment moderately well to very well; 71.7% of community felt Council's environmental planning and education programs were carried out moderately well to very well.

Our Economy

Theme: Economic Development

Strategic Direction: An innovative and growing economy that generates sustainable long term economic opportunities, employment and which provides a vibrant business foundation supported by appropriate transport infrastructure.

The economy³⁵ of Port Stephens has four key drivers:

- Defence & Aviation
- Global Manufacturing & Logistics
- Services
- Tourism

Economic Development Advisory Panel established with members selected to provide representation across the LGA and industry sectors.

The major advantages for Port Stephens relate to place (environment and lifestyle and accessibility); industry base; and economic infrastructure (airport, industrial land). The major constraints include limited higher order knowledge-based services; skills shortages (particularly in skill trades); infrastructure gaps (particularly roads, energy and services in industrial areas); weaknesses in tourism market; and limited public transport.

Port Stephens Council has a leadership role in economic development through planning, promotion of the LGA as a business location; supporting tourism; marketing and new business attractions; and small business support programs.

To support business Council developed economic development strategies for Raymond Terrace, Karuah, Medowie/Williamtown, Lemon Tree Passage and Nelson Bay and projects were delivered with funding secured from the State government.

MARKETING & NEW BUSINESS ATTRACTION

- \$50 million Sandvik industrial development in Heatherbrae employing around 700 people
- \$130 million Wes Trac 23-hectare development in Tomago
- \$50 million accommodation resort in Anna Bay
- Establishment of Marcuiano Industries manufacturing facility at Tomago

In 2008 the Minister for Local Government granted an increase in Council's business rates to fund support for economic development in the LGA.

³⁵ Port Stephens Economic Development Strategy p5

Council has supported **marketing and new business attraction:**

- Developed 3 websites to promote the region and services available
- Developed and distributed a Business Prospectus
- Developed and distributed the Economic Profile of Port Stephens
- Participated at regional expos promoting business opportunities in Port Stephens
- Entered a commercial filming partnership with Screen Hunter Central Coast
- Annually funded Port Stephens Tourism Limited
- Developed a marketing strategy for Raymond Terrace

Council assisted in the formation of the Medowie/Williamstown Business Association and formed a partnership with the Hunter Business Centre to provide small business advisory support services in Raymond Terrace and Nelson Bay.

Significant business developments in Raymond Terrace included:

- Lifeline Store
- Dan Murphy's
- Super Cheap Auto
- Defence Administration Building

The Tourism Industry Strategy and Development was supported by a strategic review of the Port Stephens tourism sector and an action plan was implemented, including Council's Economic Development Manager

taking a role on the Port Stephens Tourism Board, and annual funding to Port Stephens Tourism Limited for strategy implementation.

The Port Stephens Visitor Information Centre in Nelson Bay was equipped with comprehensive information databases and booking capabilities.

Newcastle Airport passenger throughput increased from 690,000 people in 2008 to over 1 million in 2012.

In partnership with the State government numerous events were facilitated in Port Stephens including:

- Sail Port Stephens
- Tastes at the Bay
- Blue Water Country Music Festival
- Clans on the Coast

Council also supported:

- Port Stephens Whale Festival in 2008-09
- Tilligerry Festival
- Karuah Music Festival
- Triathlon NSW Club Championships
- Port Stephens Billabong Pro-Junior Surf Tournament

AIRPORT AVIATION DEVELOPMENT

- Williamstown Aerospace Centre Committee formed – coordinated, cooperative marketing program by Council's Business Port Stephens, NSW Trade & Investment, Hunter Land, Newcastle Airport, Regional Development Australia Hunter, and Newcastle City Council
- Williamstown Aerospace Centre website development
- Williamstown Aerospace Centre information packs distributed
- Participation at Avalon / Adelaide defence+ Industry/Airpower expos
- 2 tenants confirmed for stage 1 of Williamstown Aerospace Centre
- Council's Economic Development Manager participated in NSW Government Defence Roundtable and Hunter Business Chamber's Defence Industry Committee

INDUSTRIAL LAND, INFRASTRUCTURE AND BUSINESS DEVELOPMENT

- Ampcontrol expansion of Transformer Division and establishment of corporate headquarters at Tomago
- \$20 million Volgren Australia bus assembly plant at Tomago creating 90 new jobs
- G H Varley expansion to service defence contracts
- \$3 million Forgacs upgrade at Tomago shipyard to allow construction of the Air Warfare Destroyer hull blocks, currently with 450 jobs on site
- BAE expansion of the fast jet facility at Williamstown
- Establishment of Jetstar's Heavy Maintenance Base to service the 737 fleet at Williamstown
- Establishment of the RAAF Administration facility at Raymond Terrace
- Route planning completed for the F3 extension Blackhill to Raymond Terrace
- Upgrade of Tomago Road and Pacific Highway intersection
- AGL planned gas storage development
- Williamstown Aerospace Park approved 103 lot Defence and Airport Related Employment Zone subdivision worth \$500 million designed to service the Joint Strike Fighter creating up to 2500 jobs when completed.

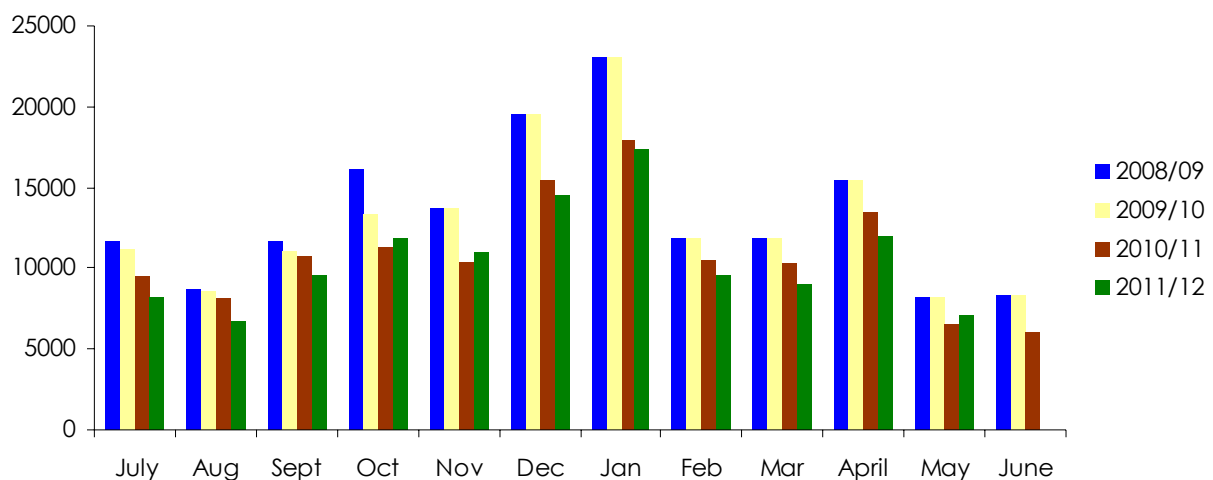
Tourism is a major economic driver of the Port Stephens LGA.

Table 21 : Visitor Information Centre Revenue from Tours/Accommodation

2008/2009	\$1,712,636.45
2009/2010	\$1,370,256.30
2010/2011	\$1,196,126.65
2011/2012 (Year to date May)	\$1,129,056.10

Graph 16: Visitor Information Centre Visitor Numbers

Port Stephens Visitor Information Centre - Monthly Visitor Numbers



Community Indicator	Outcome
Increase in business investment and job support	<ul style="list-style-type: none"> • 49.8% of community felt that Council was supporting local business and industry moderately well to very well • 82.11% of community felt that Council was supporting tourism moderately well to very well • 71.7% of community felt that Council was supporting local business associations moderately well to very well

Our Economy

Theme: Education and Training

Strategic Direction: Through access to all levels of education, people of all ages are equipped with the knowledge, skills and experiences required to maximise participation in the economic and community life of Port Stephens.

The Port Stephens LGA has a TAFE presence at the Tomaree Education Precinct and there are registered vocational training organisations in the LGA. Students can also complete studies at University of Newcastle and at TAFE colleges in the Newcastle area.

Council conducts Business Training Workshops and a number of educational and training programs through its Communicate Port Stephens facility at Raymond Terrace.

Communicate Port Stephens also conducts training programs in partnership with Registered Training Organisations, and work readiness programs with job service providers such as JobFind.

Table 22: Courses - Communicate Port Stephens

Year	Major Programs*	Students	Seniors Programs	Students
2008	3	36	Weekly	20
2009	3	36	Weekly	25
2010	5	60	Weekly	25
2011	4	60	Weekly	25
2012	4	60	Weekly	25

*Major programs include job preparation courses, mobile phone training, Cisco network training, Certificate II Retail, Certificate II Information Technology, Certificate IV Training & assessment, Barista Course, Tuff E Nuff Course, Mentoring Program, EduONE virtual classroom and general Information Technology training.

Council, through its Communicate Port Stephens training facility has developed partnerships to provide training with:

- TAFE
- Department of Education
- Job service agencies
- Beeken (registered training organisation)
- Beacon Foundation (mentoring program)
- Irrawang High School
- Telstra
- CTCA
- University of New England, NEC
- Smith Family
- Adult Learning Association
- Raymond Terrace Seniors Group

In 2009-2010 Port Stephens Council introduced 5 Mayoral Scholarships awarded for post-secondary study. The Scholarships assist students with the associated costs of study.

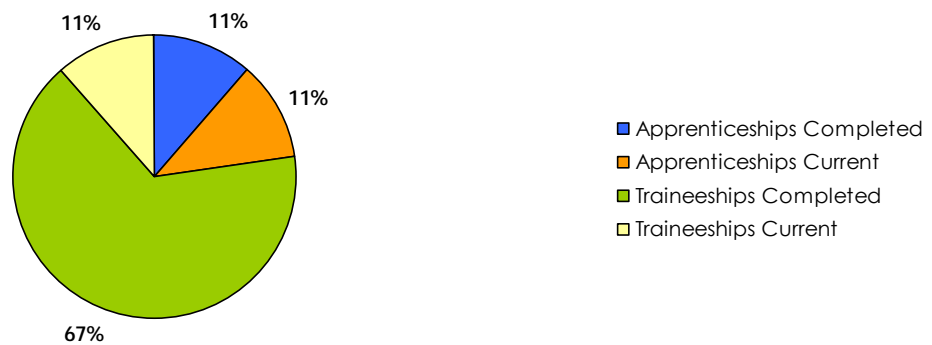
Port Stephens Council conducted staff training, learning and development as shown in the table below:

Table 23: Learning & Development Port Stephens Council

Year	Total Courses	Total Participants
2008/09	397	2180
2009/10	444	2400
2010/11	249	1379

Council also has apprenticeships and trainees – see graph below.

Port Stephens Council: Apprenticeships & Traineeships 2008 - 2012



Graph 17: Council Apprenticeships & Traineeships

Council supports workforce development with a wide range of opportunities for education, training and professional Development through a mix of vocational training, apprenticeships and traineeships, non-accredited short courses, regulatory training and university qualifications. Much of Council's training is delivered in house by Learning and Development staff, with the exception of ticketed/statutory training and Vocational Education & Training courses which are primarily run by the Local Government Training Institute (LGTI) a division of Hunter Councils Inc. LGTI work with Council in the provision of specialised services, supporting the delivery of required statutory training, accredited training programs, short courses and traineeships to ensure that Council staff are suitably qualified to perform their roles.

Community Indicator	Outcomes
Access to jobs and training	No objective data available for LGA
Workforce Skills	No objective data available for LGA

Our Economy

Theme: Employment

Strategic Direction: Port Stephens will experience local business growth, new local businesses, providing a strong employment base which fosters increased availability of and demand for skilled jobs.

In 2006 the labour force (people over 15 years of age) was 25,713 and the unemployment rate was 5.7%³⁶

In 2010 (latest data)³⁷ the labour force (people over 15 years of age) was 25,708 and the unemployment rate was 5.6%.

The Australian Bureau of Statistics Census 2011 data are not available until 30 October 2012.

Community Indicator	Outcomes
Employment including local employment	A slight decrease in unemployment to 5.6%
Business growth	Refer to Economic Development above

³⁶ Australian Bureau of Statistics Census 2006

³⁷ <http://www.abs.gov.au/AUSSTATS/abs@nbp.nsf/Latestproducts/LGA16400Economy12006-2010?opendocument&tabname=Summary&prodno=LGA16400&issue=2006-2010>

Our Economy

Theme: Technology

Strategic Direction: The people of Port Stephens have access to high quality technology services that enhance personal, business and community activities.

In 2006 62.8% of households had access to a computer at home or at work or both³⁸. In 2012 the percentage was 86.67%.³⁹ The 2011 Census shows that 67% of households in the Port Stephens Local Government Area had access to broadband internet.

Port Stephens Council and the various industry and business associations in the LGA lobbied to be included in the first rollout of the National Broadband Network. At the time of writing this report (May/June 2012) the LGA has not been included in the first rollout.

There is limited access to broadband within the LGA, limited by availability and proximity to an exchange (5kms). Satellite is used by some in rural areas, and ADSL and ADSL2, with dial-up more common for internet access. Some companies and Port Stephens Council use private microwave networks for communications between locations. The major telecommunications providers do not provide microwave services in Port Stephens.

Community Indicator	Outcome
Access to technology	General dissatisfaction with access to technology is reported to Councillors anecdotally; lack of broadband infrastructure.

³⁸ Australian Bureau of Statistics 2006 Census

³⁹ Port Stephens Council Customer Survey 2012

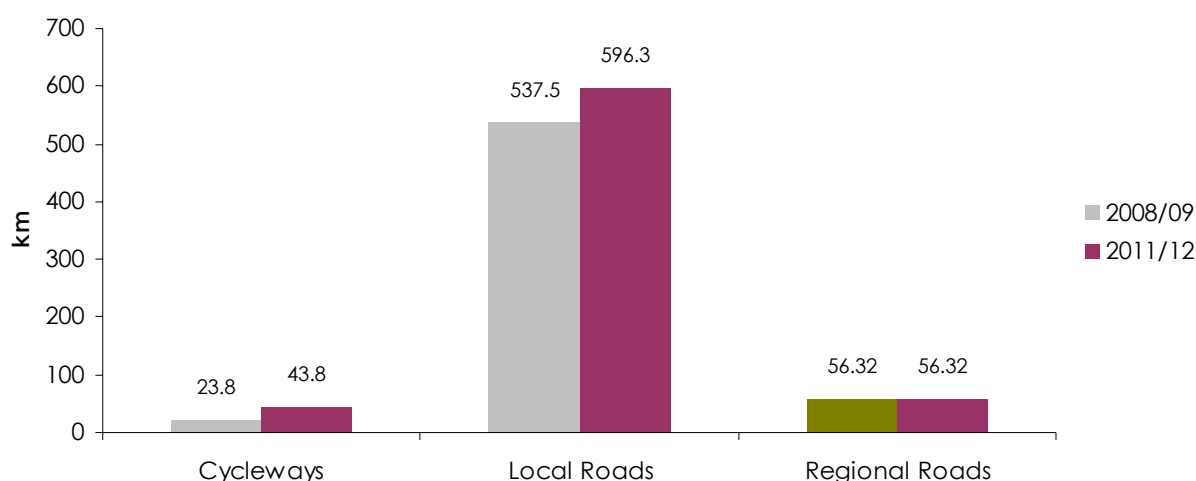
Our Economy

Theme: Transport

Strategic Direction: Port Stephens will promote sustainable and improved, accessible and flexible transport modes

The Port Stephens LGA has a network of local roads (537.5 km in 2008/09 increasing to 596.3 km in 2011-2012). Regional roads (State-owned roads) remain at the 2008 level of 56.32 kms. The Pacific Highway runs through the LGA from Hexham to Karuah.

Cycleways, Local & Regional Roads



The condition of State roads is provided on a Roads & Maritime Services website but the latest data relate to 2009⁴⁰

Table 24: Condition of State Roads

Pavement Durability:	2008 Km	2009 Km
Pacific Highway	141.7	125.5
Mayfield to Shoal Bay	10.8	10.4
Ride Quality:		
Pacific Highway	12.0	11.9

Vehicular transport remains the most popular transport option for residents and visitors. The LGA has limited public transport provided by a private bus operator and a taxi service which is also privately run. There are no State buses and there is no rail transport in Port Stephens.

⁴⁰ http://www.rta.nsw.gov.au/publicationsstatisticsforms/downloads/nswstateroads_conditions_dl1.html#

Asset Holdings	<p>Sealed Pavement: 4,962,902 m² (km) Unsealed Pavement: 365,358 m² (km)</p> <p>Roads are general Local roads and Regional roads such as Lemon Tree Passage Road, Medowie Road, the Buckets Way, Seaham Road, and parts of Clarence Town Road. Road owned privately, by the Roads and Maritime Services, and by the Crown are not included.</p>																							
Available Data	<p>Asset data stored in end of year financial Fair Value asset data base. Primary data stored in the SMEC Pavement Management System.</p> <p>Asset Data: location, year acquired (where known), length, width, pavement type and seal, road hierarchy, Average Annual Daily Traffic (AADT), condition rating (rutting, roughness, cracking, pothole, ravelling) and Fair Value calculations.</p>																							
Last Condition Survey	<p>Pavement condition inspection for roughness, rutting, and cracking was undertaken in March 2010.</p> <p>Visual inspections undertaken in 2011 for Capital Works prioritisation.</p>																							
General Assessment of Condition	<table border="1"> <thead> <tr> <th>Condition Rating</th> <th>% Assets (m²)</th> <th>\$ CRC</th> </tr> </thead> <tbody> <tr> <td>1 Near Perfect</td> <td>5</td> <td>\$7,791,464</td> </tr> <tr> <td>2 Good</td> <td>52</td> <td>\$171,968,902</td> </tr> <tr> <td>3 Satisfactory</td> <td>28</td> <td>\$84,038,057</td> </tr> <tr> <td>4 Very Poor</td> <td>9</td> <td>\$27,821,246</td> </tr> <tr> <td>5 Unserviceable</td> <td>6</td> <td>\$15,703,528</td> </tr> <tr> <td>TOTAL</td> <td>100</td> <td>\$307,323,197</td> </tr> </tbody> </table>			Condition Rating	% Assets (m ²)	\$ CRC	1 Near Perfect	5	\$7,791,464	2 Good	52	\$171,968,902	3 Satisfactory	28	\$84,038,057	4 Very Poor	9	\$27,821,246	5 Unserviceable	6	\$15,703,528	TOTAL	100	\$307,323,197
	Condition Rating	% Assets (m ²)	\$ CRC																					
	1 Near Perfect	5	\$7,791,464																					
	2 Good	52	\$171,968,902																					
	3 Satisfactory	28	\$84,038,057																					
	4 Very Poor	9	\$27,821,246																					
	5 Unserviceable	6	\$15,703,528																					
TOTAL	100	\$307,323,197																						
Main Findings	<p>Pavement visual and laser inspections that were undertaken in 2010 indicate that 85.6% of the sealed network is considered to be in a satisfactory condition, though some 41.8% of the network requires some form of treatment.</p> <p>The current backlog of works to bring to satisfactory condition is calculated at \$19 million with an annual sustainability gap of \$7 million based on the 2010 figures.</p> <p>The road network condition is currently based on the roughness count and visual assessment only.</p> <p>Council is still implementing the full SMEC Pavement Management System for future programmed works.</p>																							

Table 25: Condition of Local Roads Port Stephens LGA⁴¹

Council supports the local [Traffic Committee](#)⁴², which is a technical advisory body authorised to recommend regulatory traffic controls to the responsible Road Authority. The Committee's functions are prescribed by the Transport Administration Act with membership extended to the following stakeholder representatives; the Local Member of Parliament, the Department of

⁴¹ Extract from Port Stephens Council Strategic Asset Management Plan V2 2012

⁴² is not a Committee of Council

Transport, NSW Police, Roads & Maritime Service and Council. The recommendations from the local Traffic Committee aim to improve traffic management and road safety.

Two helicopter companies service Port Stephens, based at Williamstown. In addition the Westpac Rescue Helicopter Nelson Bay operates from Salamander Bay.

A ferry service operates several times daily between Port Stephens and Great Lakes LGAs (Nelson Bay – Tea Gardens).

Newcastle Airport Limited is an enterprise jointly owned by Newcastle City Council and Port Stephens Council. It is situated in Port Stephens LGA on a facility shared with the RAAF. The Airport's passenger throughput has increased from 690,000 in 2008 to over 1 million in 2012.

- Council has identified Park and Ride locations across the LGA and is continuing the planning required, including surveying and assessment of the properties as suitable for this purpose. Communication has been made with local transport operators to identify opportunities for enhanced connectivity with other modes of transport
- Council meets six monthly with the NSW Department of Transport and private operators to advance ways to improve bus services across the LGA
- Council has undertaken a review of the DCP 2007 related to promote alternative transport modes in the light of climate change impacts

Community Indicator	Outcomes
Reliable public transport	No recent objective data available – will be surveyed in the Community Survey in November 2012
Maintained road infrastructure	85% of local roads are rated Satisfactory or better

Our Council

Theme: A Sustainable Council

Strategic Direction: Ensure the long term sustainability of services and protect the community's assets for future generations in a way that is supported by the community.

The financial results shown in this section relate to audited financial accounts of Port Stephens Council unless specified otherwise. Figures generally related to the four years to June 2011. The audited financial accounts for 2012 are not available until November 2012.

Financial Sustainability

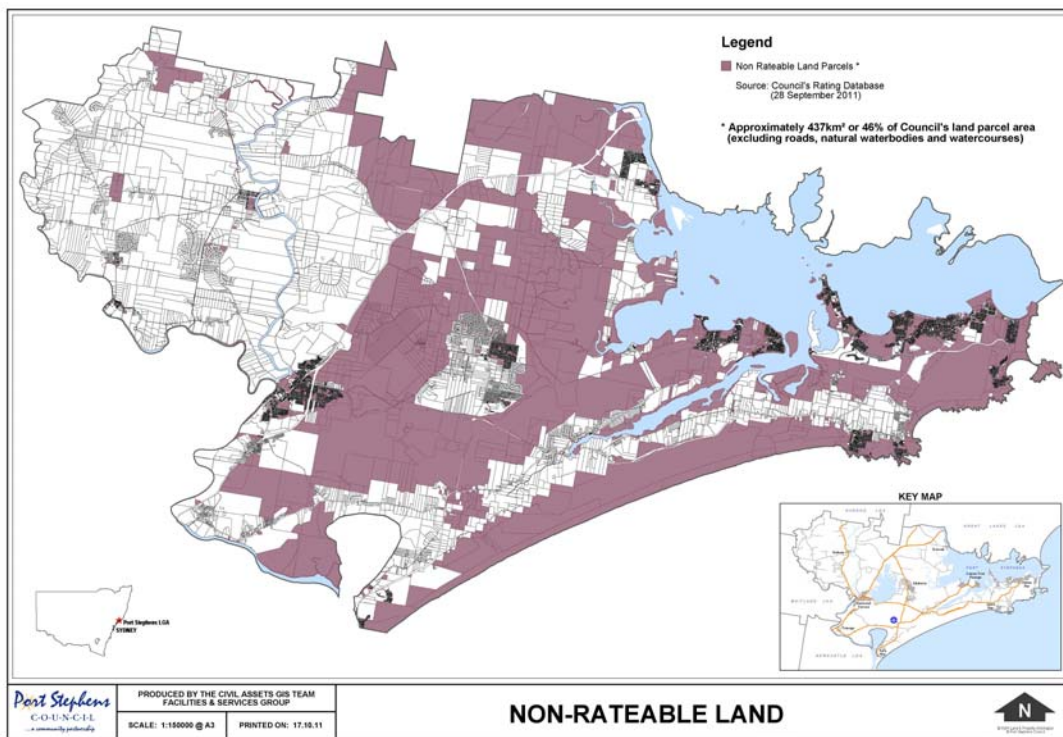
The Port Stephens LGA comprises four categories of **rateable land** as shown in the table below:

Table 26: Rating Categories

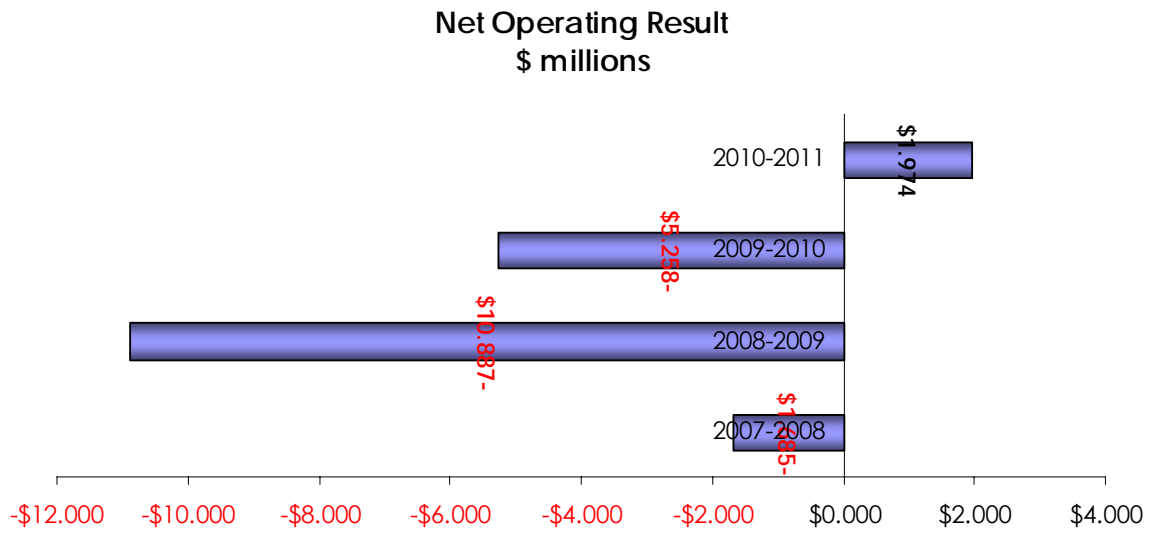
Rates Category	Number of Assessments	
	2008-2009	2011-2012
Farmland	482	474
Residential	28,897	29,477
Mining	2	2
Business	1,837	1,751

Only **42%** of the land in Port Stephens LGA is rateable, as land which does not attract rates includes crown land and land subject to constraints, as well as such exempt areas as Grahamstown Dam and government entities' facilities. For this reason, as graph 17 below shows, Council has worked to increase revenue from non-rates sources.

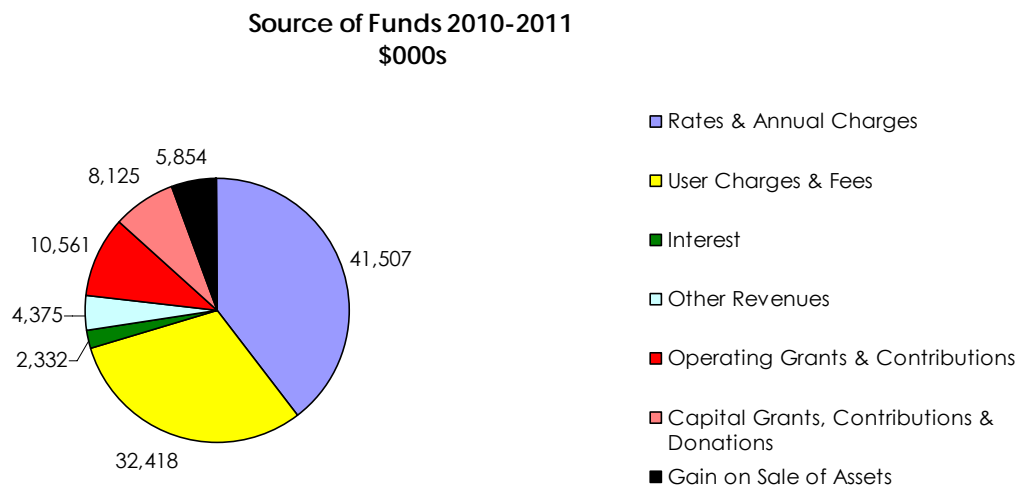
Map 9: Non-rateable Land



Graph 18: Net Operating Result⁴³



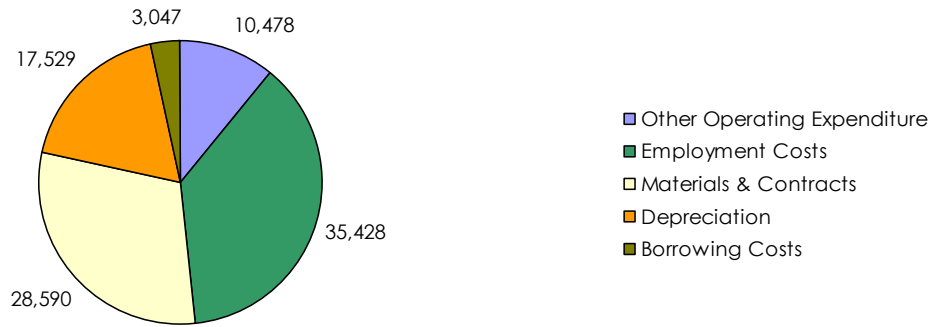
Graph 19: Council's Source of Revenue⁴⁴



⁴³ Net operating result excludes profits from land sales

⁴⁴ Port Stephens Council Annual Report 2010-2011

Expenditure 2010-2011 \$000s



Graph 20: Council's Expenditure

Debt Service Ratio

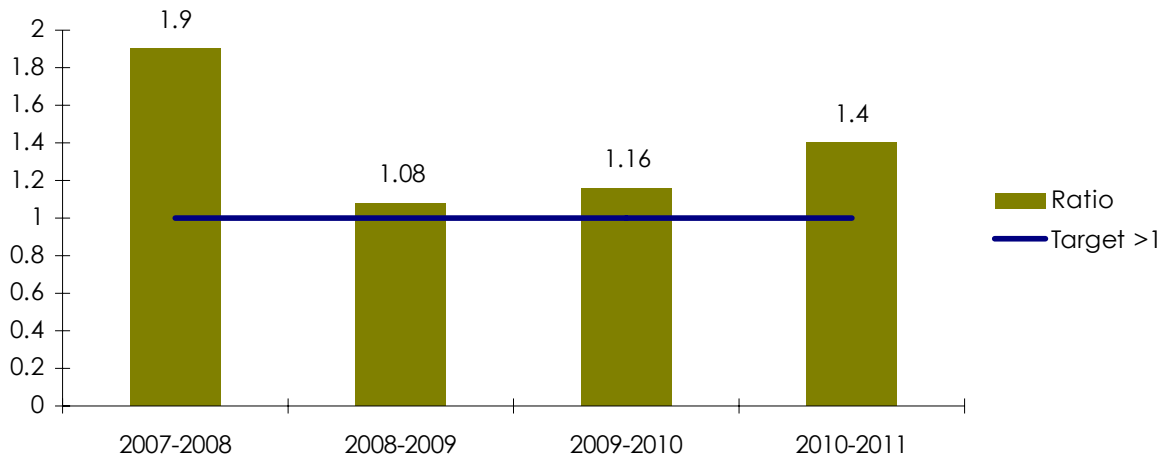


Graph 21: Debt Service Ratio⁴⁵

Note: the Debt Service Ratio for 2010-2011 includes a one-off loan repayment of \$5.8 million; without this the ratio would be 11.14%.

⁴⁵ Port Stephens Council Annual Audited Accounts Note 13 Indicator #2

Unrestricted Current Ratio



Graph 22: Unrestricted Current Ratio

Asset Management

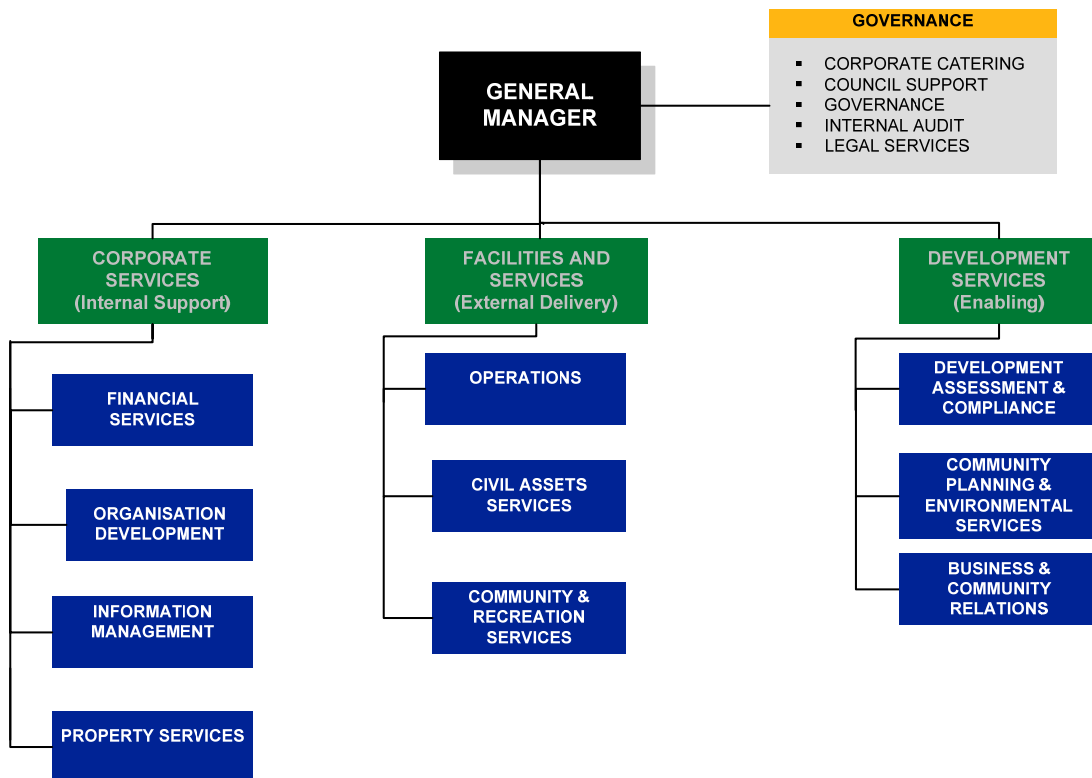
Management of community assets is shown in the next section on **Infrastructure**.

Council's Workforce:

2009	2010	2011	2012
467.9	471.01	468.67	467.4

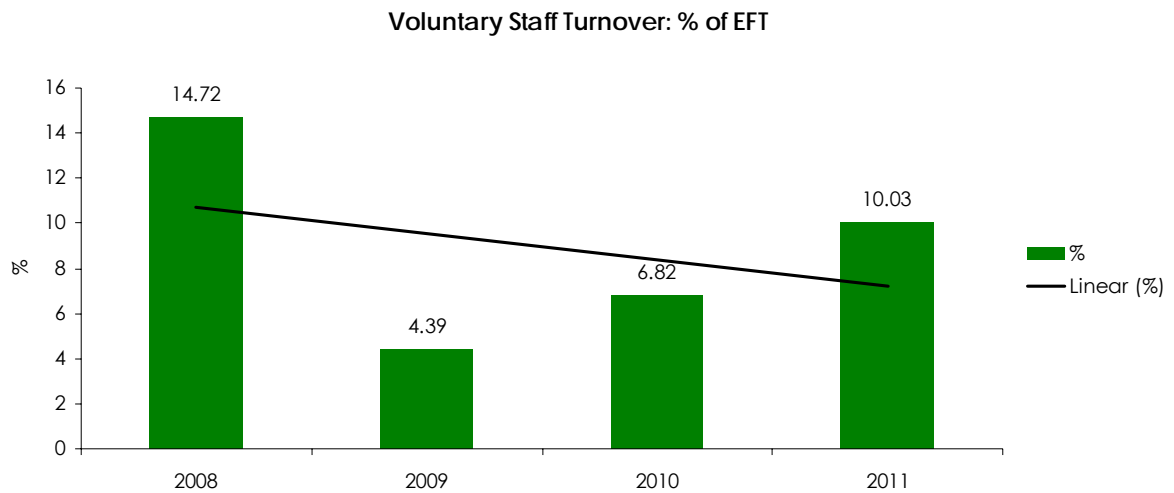
Council conducted a minor restructure in 2010 and completed a major restructure in June 2012 to align the workforce to the needs of its businesses to deliver services to the community of the Port Stephens LGA. Some results of the restructure include reducing the number of divisions (Groups) from four to three, reducing the number of senior administrative units (Sections) from fourteen to ten, with three themes informing the groupings, being enabling, delivery and support.

Figure 1: Port Stephens Council Organisation Chart



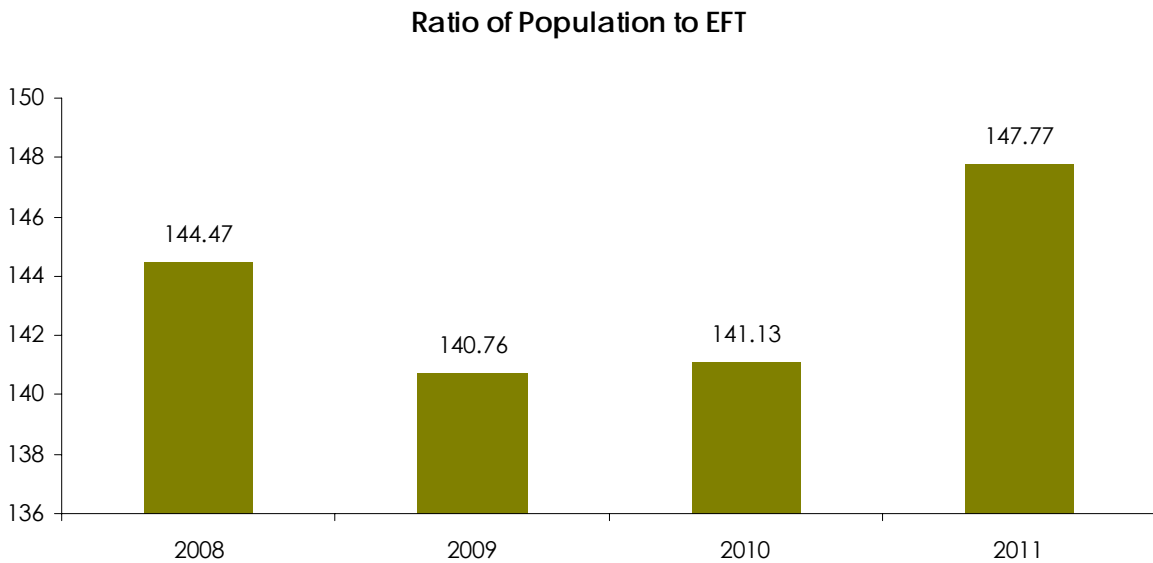
A measure of workforce effectiveness is the number of staff who voluntarily leave the organisation as a percentage of EFT staff, as shown in the graph below. The State average for local government is 16%.

Graph 23: Voluntary Staff Turnover



A measure of the ability/capacity of Council to deliver services to the LGA is the ratio of population to EFT as shown in the graph below.

Graph 24: Ration of Population to EFT



Community Indicator	Outcome
Financial Sustainability	Port Stephens Council is on track for its net operating result to breakeven in 2015.
Sustainability Gap – Infrastructure Management	Sustainability Gap is \$7.237 million p.a.
Workforce Strategy Effectiveness	Voluntary staff turnover remains below State average for local government.

Our Council

Theme: Infrastructure

Strategic Direction: Infrastructure and utilities meet the needs of all sections of the community.

Utilities in the Port Stephens LGA are operated by Ausgrid (electricity)⁴⁶ and Hunter Water Corporation (water and reticulated sewerage). Water quality and energy supply are generally good and monitored against the appropriate standards.⁴⁷

Port Stephens Council has 3 categories of community assets (**infrastructure**):

Building, Community & Recreation Assets:

- Council Buildings
 - Offices – Administration Building
 - Information & Communication Technology
 - Depots
- Emergency Services
 - Fire stations
 - SES buildings
- Community Buildings
 - Libraries
 - Halls
 - Preschools and Child Care Centres
- Recreational
 - Parks/reserves
 - Waterways
 - Cemeteries
 - Public Amenities
 - Playgrounds
 - Sport
 - Swimming Pools
 - Surf Clubs

Civil Infrastructure Assets:

- Roads
- Bridges
- Ancillary Facilities:
 - Footpaths/cycleways
 - Bus shelters
 - Guardrails
 - Parking meters
 - Retaining walls
 - Signs
 - Street lighting
- Drainage
 - Detention ponds

The condition of community assets is rated every five years under a 5-point system:

1. Near Perfect
2. Good
3. Satisfactory
4. Very Poor
5. Unserviceable

⁴⁶ Ausgrid.com.au

⁴⁷ <http://www.hunterwater.com.au/Water-and-Sewer/Water-Supply/Water-Quality/Water-Quality.aspx>

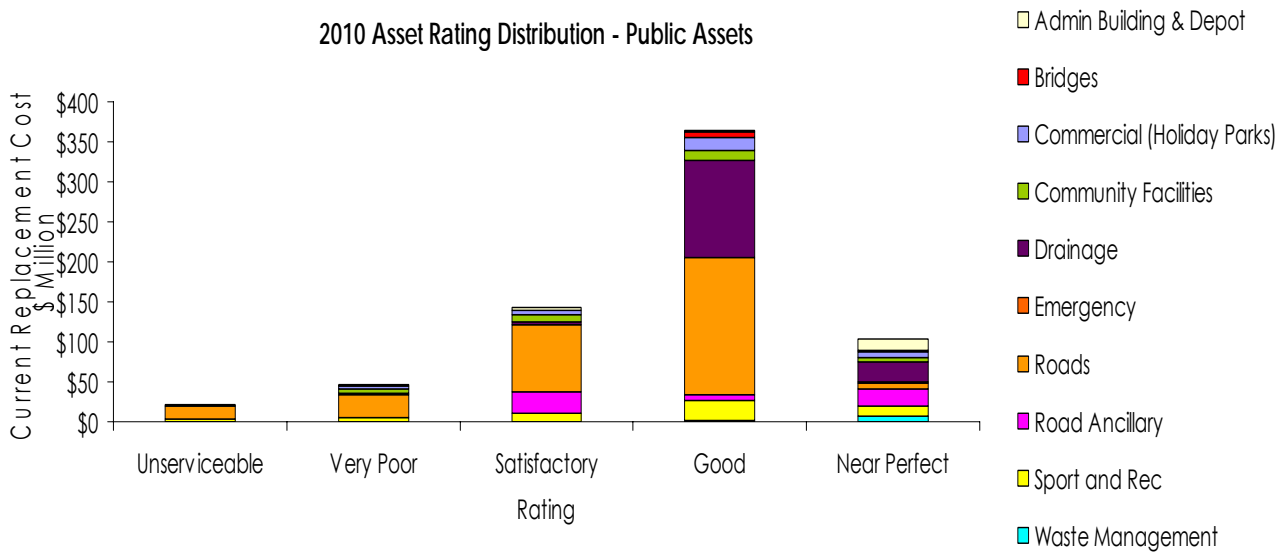
- Gross pollutant traps
- Pits, pipes, and headwalls
- Open drains
- Waste
- Heritage items

Commercial Assets:

- Holiday Parks/Resorts
- Commercial Properties

The condition rating of community assets (infrastructure) is shown in the graph below:

Graph 25: Asset Rating Distribution - Public Assets⁴⁸



The estimated cost to bring all asset categories to a "Satisfactory" rating is \$26.819 million with annual maintenance estimated at \$17.618 million. The actual budget for maintenance is \$10.381 million per annum. So the Asset Sustainability Gap is \$7.237 million per annum.⁴⁹

The graph below shows the number of capital works – asset rehabilitation, and the expenditure by Council on maintaining community assets through capital works.

⁴⁸ This rating is used to provide a snapshot of the Council's asset health against a conglomerated asset lifecycle and is graphically represented by plotting the summary of the asset's current replacement against each condition rating category.

⁴⁹ Port Stephens Council Annual Report 2010-2011: Special Schedule 7 p.210

Capital Works Projects Completed: Asset Rehabilitation 2008-2012



Graph 26: Completed Capital Works Projects - Number and Cost

During the period under review Council has obtained **grants from external bodies** (State and Federal government):

	2008-2009 \$000s	2009-2010 \$000s	2010-2011 \$000s	2011-2012* \$000s
Black Spot Funding	0	0	650	299
Road Toll Response	0	0	1,041	0
Roads to Recovery	735	750	747	0
RLCIP	0	0	155	55
State government grants	597	200	447	1,606
Financial Assistance Grant - Equalisation Component	4,615	3,815	4,176	4,165
Financial Assistance Grant - Road Component	1,194	977	1,058	1,053

* Actual as at 18 June 2012

In 2011 and 2012 as part of its Sustainability Review, Council conducted a series of workshops with the community of Port Stephens to ascertain the service levels required of community assets. Planning has commenced to implement the findings of this review across the range of community assets.

Community Indicator	Outcome
Reliable electricity and water	Utilities suppliers' websites do not indicate supply problems.
Community infrastructure maintenance	Sustainability gap is currently in excess of \$7 million p.a.
State infrastructure maintenance	No reliable data available except for State roads which dates from 2009 and shows the Pacific Highway for all of its length as having few kilometres where ride quality and pavement condition are poor.

Our Council

Theme: Governance and Civic Leadership

Strategic Direction: Good governance and partnerships in a climate of open and effective communication, accountability and trust.

Civic Leadership

For the period September 2008 to August 2012 Council's civic leadership comprises 12 Councillors – four representing each of West, Central and East Wards. The Mayor is elected by the Councillors.

At the local government elections held in September 2008 the community of Port Stephens participated in a referendum which resulted in a vote to change the number of elected representatives from four to three per Ward from 2012 elections, and to popularly elect the Mayor.

Council Committee meetings are held on the second Tuesday in every month and Council **Ordinary Meeting** is held on the fourth Tuesday of the month. Council does not normally meet in January. **Public Access** provides a forum for members of the Public to speak directly to the twelve elected Councillors about local or Council issues. Public Access sessions are restricted to a total of twelve (12) speakers per month with five minutes per speaker and a limit of two speakers for, and two speakers against any issue.

At the commencement of the Councillors' term of office in 2008 a comprehensive, self-paced **learning system** was provided. Council reviewed the learning system in 2010 and provided Councillors with an updated version.

In addition, Councillors are provided with opportunities to attend conferences when they arise. In the term of the Council (2008-2012) all Councillors attended at least one learning and development opportunity annually.

Council has the following policies in place for civic governance:

- Access to Information Policy & Guidelines
- Code of Conduct
- Code of Meeting Practice
- Internal Reporting – Protected Disclosures Act
- Pecuniary Interest Returns
- Payment of Expenses and Provision of Facilities to Councillors Policy

Councillors participate in all **Council Committees** and **civic occasions** such as Australia Day and Anzac Day.

In 2009 the State Government introduced the Government Information (Public Access) Act which has a presumption in favour of disclosure of government information and it applies to both State and local governments.

Advocacy

Individual Councillors, Council collectively and senior staff are involved in an ongoing capacity in making representations to other levels of government on behalf of the citizens of the Port Stephens LGA. Councillors serve on regional committees as outlined in Table 12. The Mayor and General Manager attend the annual Australian Council of Local Government Forums held in Canberra and in 2011 they participated in the Destination 2036 forum with the NSW Minister for Local Government that prepared the groundwork for actions to improve local government in the State.

Council has made submissions and representations to State government agencies on:

- Destination 2036 Draft Action Plan
- NSW Planning Reform
- Independent Pricing & Regulatory Tribunal on rate pegging and the Local Government Cost Index
- Integrated Planning & Reporting
- NSW Grants Commission regarding Port Stephens LGA share of the NSW allocation of Federal Assistance Grant funds

Port Stephens Council, through its Social Planning Unit, convenes the Inter-Agencies Network. This Network, with over 300 member groups, comprises those State government and non-government agencies responsible for delivery of services to the community. Advocacy through this Network resulted in the project HealthOne, bringing new health services to Raymond Terrace and surrounding areas.

As members of Hunter Councils Inc, Port Stephens Council joins with the other councils in the Hunter Region in representations to State and Federal governments on matters that affect the region for example, the state of the Pacific Highway; public transport in the Region.

Governance

Port Stephens Council has a hierarchy of instruments that govern how it operates and the parameters of its powers. Examples of Federal and State laws are shown below.

Jurisdiction	Example	Port Stephens Council
Federal	Copyright Act 1968	Provisions relating to councils' rights to protect their intellectual property particularly in relation to the securing of copyright.
State	Local Government Act 1993 with the Local Government (General) Regulation 2005	This Act sets out the scope and limit of local government in NSW in terms of functions and its charter.
State	Environmental Planning & Assessment Act 1979 and Regulation 2000	An Act to institute a system of environmental planning and assessment for the State of New South Wales.
In total there are in excess of 110 State laws that directly affect Port Stephens Council. The 2 Acts above impact on Council the most frequently.		

In addition, Port Stephens Council has formulated policies related to both the internal Council behaviours and rules, and externally-related policies. Examples include Asset Management Policy (internal); Footway Dining in Port Stephens Policy (external). Policies are made by Council and are reviewed regularly. A full list of Council's policies is available on its website.⁵⁰

- Port Stephens Council's Corporate Risk Management Framework aims to provide a comprehensive overview of Council's risk management approach, systems and process to help all employees manage risk. It provides a system for the setting of priorities when there are competing demands on limited resources.
- Port Stephens Council's internal audit functions were undertaken since 2008 firstly by Forsyth's Armidale and since 2010 by Lawler Partner
- Council has appointed an independent Audit Committee comprising 3 senior executives from outside local government
- Council's external auditors are Price WaterhouseCoopers and are responsible for the annual audit of Council's financial statements

In 2009 the State Government passed the Local Government (Integrated Planning & Reporting) Act which established new planning and reporting requirements for councils in NSW.

Port Stephens Council consulted its community in 2009 and again in 2010 and formulated its integrated plans:

- Community Strategic Plan
- Delivery Program
- Operational Plans (annual)
- Resource Strategy
 - Workforce Strategy
 - Asset Management Plan
 - Long Term Financial Plan

From 2008 to June 2011 the General Manager provided quarterly reports to Council on progress against the various management plans. From June 2011 the General Manager **reports** six-monthly on the plans and quarterly on the financial situation. These reports are available on Council's website.⁵¹

The 2009 Integrated Planning and Reporting legislation required that councils must provide an '**end of term**' report to their communities. This report is the first required under that legislation.

Council also provides an **Annual Report** to the community, including audited financial accounts. Every 4 years it also provides as part of the Annual Report a comprehensive **State of Environment Report**. These documents are available on Council's website.⁵²

⁵⁰ http://www.portstephens.nsw.gov.au/index.php?option=com_jentlacontent&view=category&id=3606&Itemid=4066

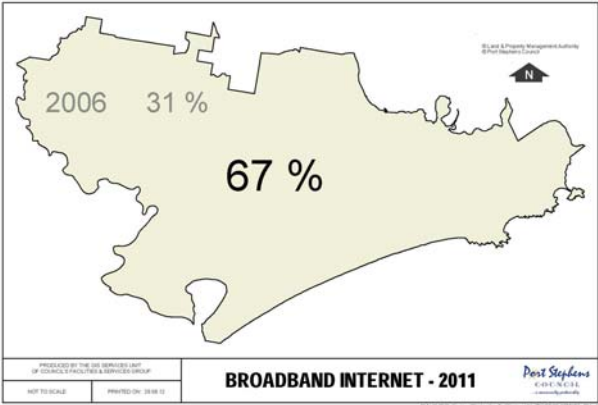
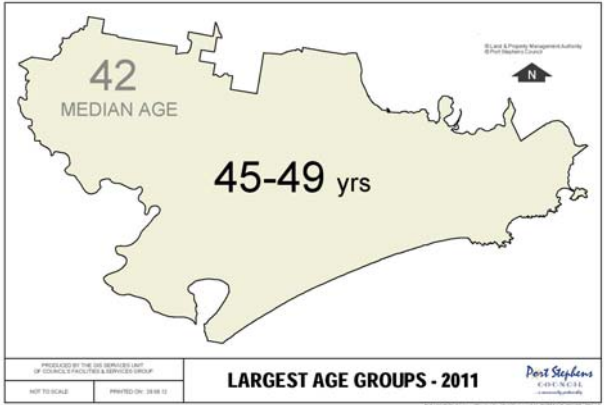
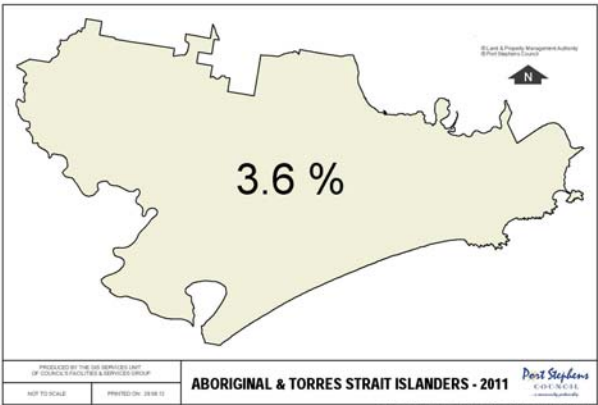
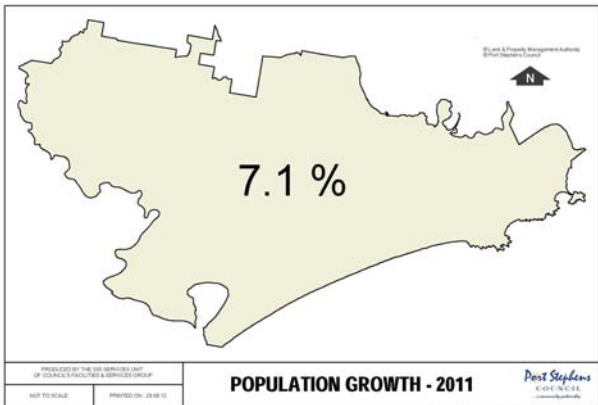
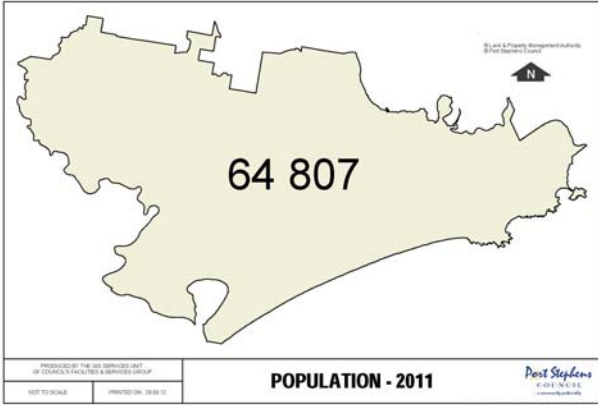
⁵¹ http://www.portstephens.nsw.gov.au/index.php?search_word=six+monthly+report&layout=search&view=search&cid=&Itemid=&option=com_jentlacontent

⁵² http://www.portstephens.nsw.gov.au/index.php?option=com_jentlacontent&view=enhanced&id=1132984&Itemid=4026

Community Indicator	Outcome
Community satisfaction with Port Stephens Council	Overall satisfaction level of 75%. This comprised those who were moderately satisfied (49.4%); satisfied (22.1%) or very satisfied (3.6%). ⁵³

⁵³ Port Stephens Council Customer Satisfaction Survey 2012

Attachment 1 Data from 2011 Census for the Port Stephens Local Government Area



Disclaimer

Port Stephens Council End of Term Report 2008-2012© was prepared in May and June 2012 as an information source only and represents the best available data at the time of preparation.

Despite our best efforts, Port Stephens Council makes no statements, representations or warranties about the accuracy, completeness or reliability of any information contained in the report. The Council disclaims all responsibility and all liability (including without limitation, liability in negligence) for all expenses, losses, damages and costs you might incur as a result of the information being inaccurate or incomplete in any way, and for any reason.

