

ID	Location	Max_Flood_Level_mA
1	East of Old Pacific Highway	4.96
2	East of New Pacific Highway	4.19
3	North of Masonite Road	4.18
4	Fullerton Cove West	2.61
5	Fullerton Cove East	2.39
6	George Street	2.39
7	South of Cabbage Tree Road	2.39
8	North of Cabbage Tree Road	2.39
9	Lavis Lane	1.80
10	South of Nelson Bay Road	1.79
11	North of Nelson Bay Road	2.20
12	Upstream of Tilligerry Creek Flood Gates	1.78
13	Salt Ash	1.72

Computed Maximum Water Levels m(AHD)

0.2 to 0.5	2.3 to 2.4	4.2 to 4.3	6.1 to 6.2
0.5 to 0.6	2.4 to 2.5	4.3 to 4.4	6.2 to 6.3
0.6 to 0.7	2.5 to 2.6	4.4 to 4.5	6.3 to 6.4
0.7 to 0.8	2.6 to 2.7	4.5 to 4.6	6.4 to 6.5
0.8 to 0.9	2.7 to 2.8	4.6 to 4.7	6.5 to 6.6
0.9 to 1.0	2.8 to 2.9	4.7 to 4.8	6.6 to 6.7
1.0 to 1.1	2.9 to 3.0	4.8 to 4.9	6.7 to 6.8
1.1 to 1.2	3.0 to 3.1	4.9 to 5.0	6.8 to 6.9
1.2 to 1.3	3.1 to 3.2	5.0 to 5.1	6.9 to 7.0
1.3 to 1.4	3.2 to 3.3	5.1 to 5.2	7.0 to 7.1
1.4 to 1.5	3.3 to 3.4	5.2 to 5.3	7.1 to 7.2
1.5 to 1.6	3.4 to 3.5	5.3 to 5.4	7.2 to 7.3
1.6 to 1.7	3.5 to 3.6	5.4 to 5.5	7.3 to 7.4
1.7 to 1.8	3.6 to 3.7	5.5 to 5.6	7.4 to 7.5
1.8 to 1.9	3.7 to 3.8	5.6 to 5.7	7.5 to 7.6
1.9 to 2.0	3.8 to 3.9	5.7 to 5.8	7.6 to 7.7
2.0 to 2.1	3.9 to 4.0	5.8 to 5.9	7.7 to 7.8
2.1 to 2.2	4.0 to 4.1	5.9 to 6.0	7.8 to 7.9
2.2 to 2.3	4.1 to 4.2	6.0 to 6.1	7.9 to 8.0

Model Extent
 Contour Lines
 Point Inspection Locations
 Longitudinal Profile Chainage

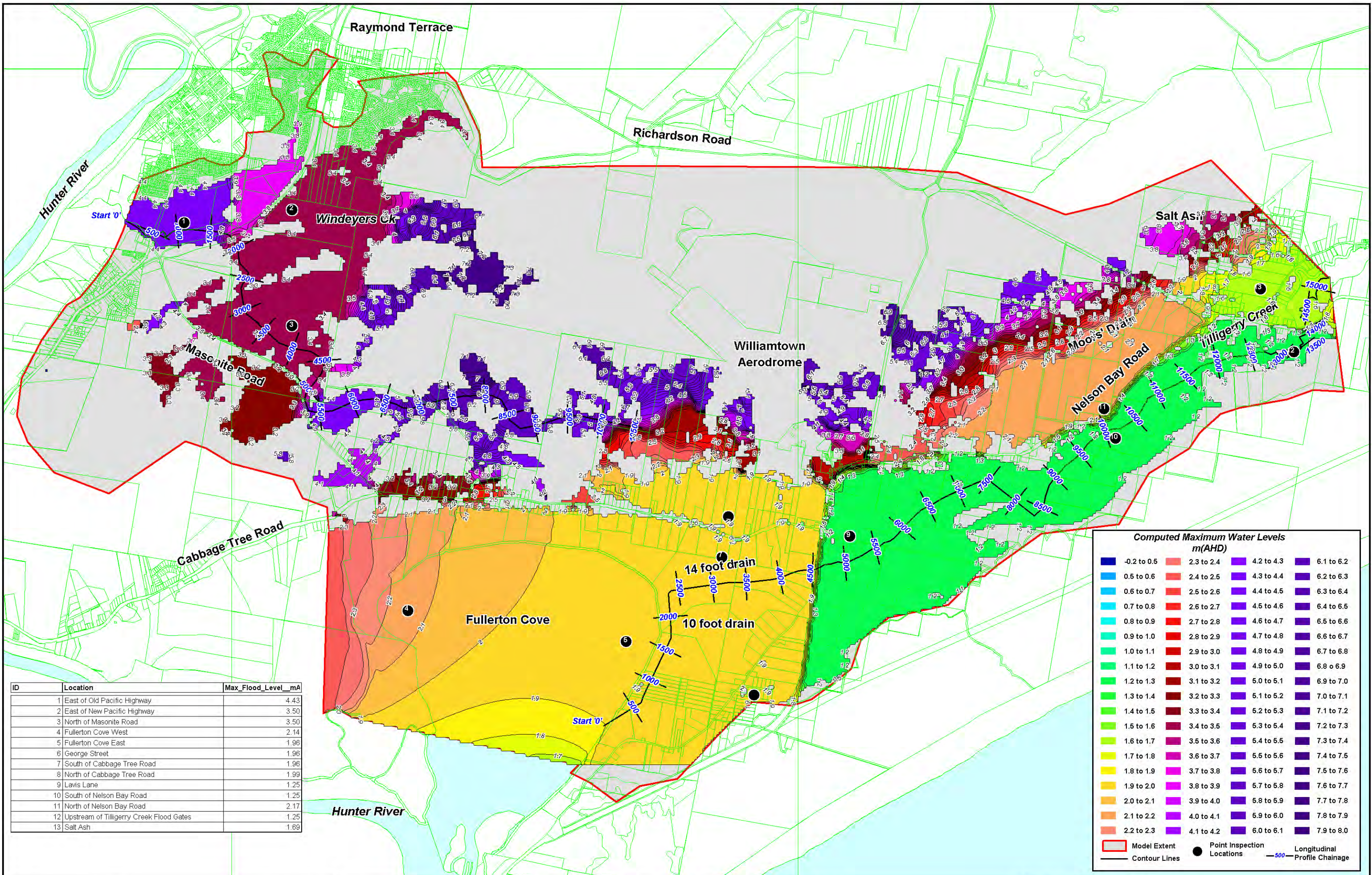


Williamtown Flood Study - Design Event : 0.5% AEP
Envelope of Maximum Flood Levels from TUFLOW Models:
 Run13.tcf, Run14.tcf & Run15.tcf

Figure 0.5%AEP_h_R1

I:\B12870_pe\DRG\Flood Levels\0.5%AEP_h_R1 wor





ID	Location	Max_Flood_Level_mA
1	East of Old Pacific Highway	4.43
2	East of New Pacific Highway	3.50
3	North of Masonite Road	3.50
4	Fullerton Cove West	2.14
5	Fullerton Cove East	1.96
6	George Street	1.96
7	South of Cabbage Tree Road	1.96
8	North of Cabbage Tree Road	1.99
9	Lavis Lane	1.25
10	South of Nelson Bay Road	1.25
11	North of Nelson Bay Road	2.17
12	Upstream of Tilligerry Creek Flood Gates	1.25
13	Salt Ash	1.69

Computed Maximum Water Levels m(AHD)

0.2 to 0.5	2.3 to 2.4	4.2 to 4.3	6.1 to 6.2
0.5 to 0.6	2.4 to 2.5	4.3 to 4.4	6.2 to 6.3
0.6 to 0.7	2.5 to 2.6	4.4 to 4.5	6.3 to 6.4
0.7 to 0.8	2.6 to 2.7	4.5 to 4.6	6.4 to 6.5
0.8 to 0.9	2.7 to 2.8	4.6 to 4.7	6.5 to 6.6
0.9 to 1.0	2.8 to 2.9	4.7 to 4.8	6.6 to 6.7
1.0 to 1.1	2.9 to 3.0	4.8 to 4.9	6.7 to 6.8
1.1 to 1.2	3.0 to 3.1	4.9 to 5.0	6.8 to 6.9
1.2 to 1.3	3.1 to 3.2	5.0 to 5.1	6.9 to 7.0
1.3 to 1.4	3.2 to 3.3	5.1 to 5.2	7.0 to 7.1
1.4 to 1.5	3.3 to 3.4	5.2 to 5.3	7.1 to 7.2
1.5 to 1.6	3.4 to 3.5	5.3 to 5.4	7.2 to 7.3
1.6 to 1.7	3.5 to 3.6	5.4 to 5.5	7.3 to 7.4
1.7 to 1.8	3.6 to 3.7	5.5 to 5.6	7.4 to 7.5
1.8 to 1.9	3.7 to 3.8	5.6 to 5.7	7.5 to 7.6
1.9 to 2.0	3.8 to 3.9	5.7 to 5.8	7.6 to 7.7
2.0 to 2.1	3.9 to 4.0	5.8 to 5.9	7.7 to 7.8
2.1 to 2.2	4.0 to 4.1	5.9 to 6.0	7.8 to 7.9
2.2 to 2.3	4.1 to 4.2	6.0 to 6.1	7.9 to 8.0

— Model Extent ● Point Inspection Locations —500— Longitudinal Profile Chainage
— Contour Lines

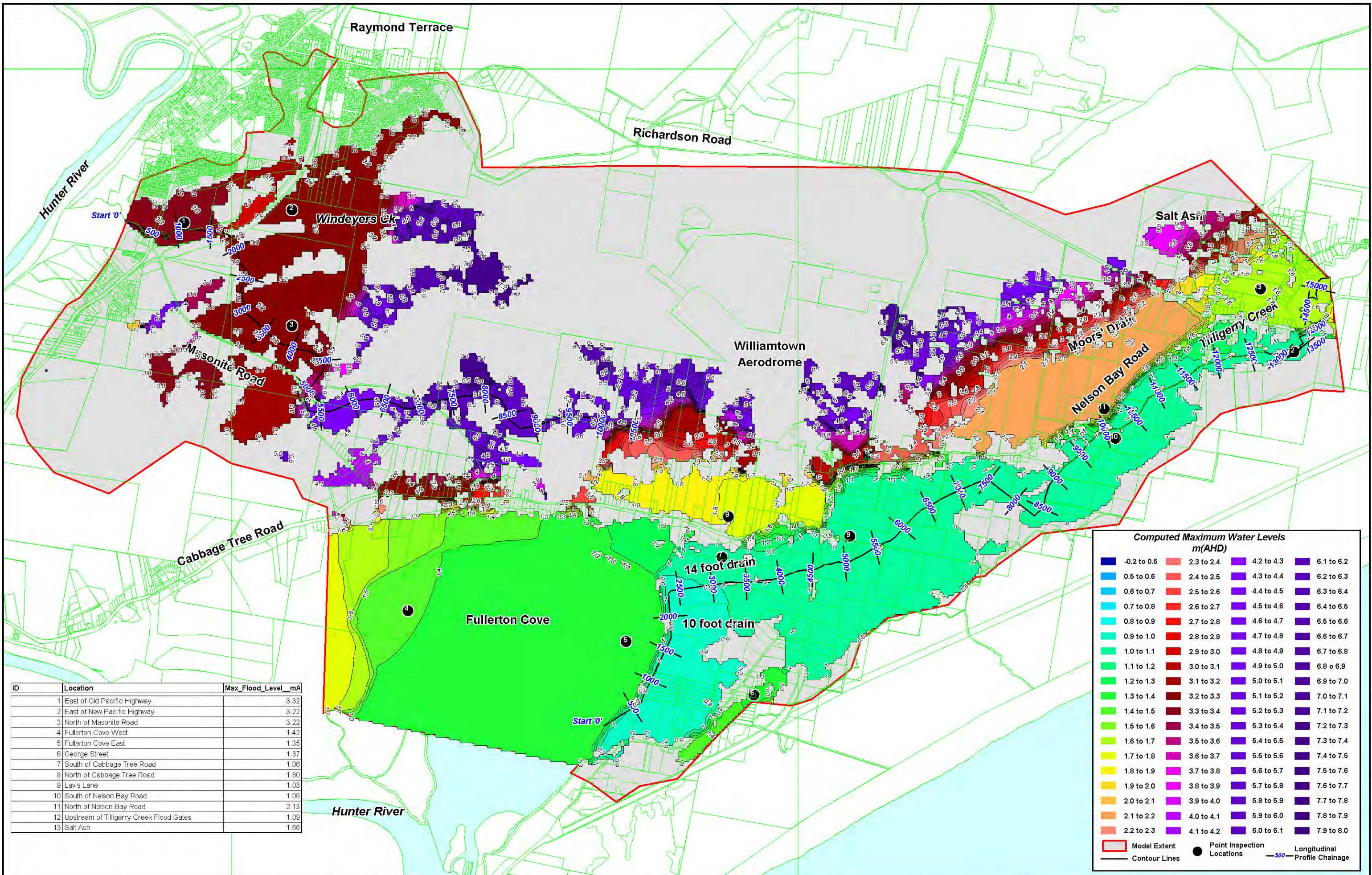


Williamtown Flood Study - Design Event : 1% AEP
Envelope of Maximum Flood Levels from TUFLOW Models:
 Run10.tcf, Run11.tcf & Run12.tcf

Figure 1%AEP_h_R1

I:\B12870_\pe\DRG\Flood Levels\1%AEP_h_R1.wor





ID	Location	Max_Flood_Level_mA
1	East of Old Pacific Highway	3.32
2	East of New Pacific Highway	3.22
3	North of Masonite Road	3.22
4	Fullerton Cove West	1.42
5	Fullerton Cove East	1.35
6	George Street	1.37
7	South of Cabbage Tree Road	1.06
8	North of Cabbage Tree Road	1.80
9	Lavis Lane	1.03
10	South of Nelson Bay Road	1.06
11	North of Nelson Bay Road	2.13
12	Upstream of Tilligerry Creek Flood Gates	1.09
13	Salt Ash	1.66

Computed Maximum Water Levels m(AHD)

0.2 to 0.5	2.3 to 2.4	4.2 to 4.3	6.1 to 6.2
0.5 to 0.6	2.4 to 2.5	4.3 to 4.4	6.2 to 6.3
0.6 to 0.7	2.5 to 2.6	4.4 to 4.5	6.3 to 6.4
0.7 to 0.8	2.6 to 2.7	4.5 to 4.6	6.4 to 6.5
0.8 to 0.9	2.7 to 2.8	4.6 to 4.7	6.5 to 6.6
0.9 to 1.0	2.8 to 2.9	4.7 to 4.8	6.6 to 6.7
1.0 to 1.1	2.9 to 3.0	4.8 to 4.9	6.7 to 6.8
1.1 to 1.2	3.0 to 3.1	4.9 to 5.0	6.8 to 6.9
1.2 to 1.3	3.1 to 3.2	5.0 to 5.1	6.9 to 7.0
1.3 to 1.4	3.2 to 3.3	5.1 to 5.2	7.0 to 7.1
1.4 to 1.5	3.3 to 3.4	5.2 to 5.3	7.1 to 7.2
1.5 to 1.6	3.4 to 3.5	5.3 to 5.4	7.2 to 7.3
1.6 to 1.7	3.5 to 3.6	5.4 to 5.5	7.3 to 7.4
1.7 to 1.8	3.6 to 3.7	5.5 to 5.6	7.4 to 7.5
1.8 to 1.9	3.7 to 3.8	5.6 to 5.7	7.5 to 7.6
1.9 to 2.0	3.8 to 3.9	5.7 to 5.8	7.6 to 7.7
2.0 to 2.1	3.9 to 4.0	5.8 to 5.9	7.7 to 7.8
2.1 to 2.2	4.0 to 4.1	5.9 to 6.0	7.8 to 7.9
2.2 to 2.3	4.1 to 4.2	6.0 to 6.1	7.9 to 8.0

Model Extent
 Contour Lines
 Point Inspection Locations
 Longitudinal Profile Chainage

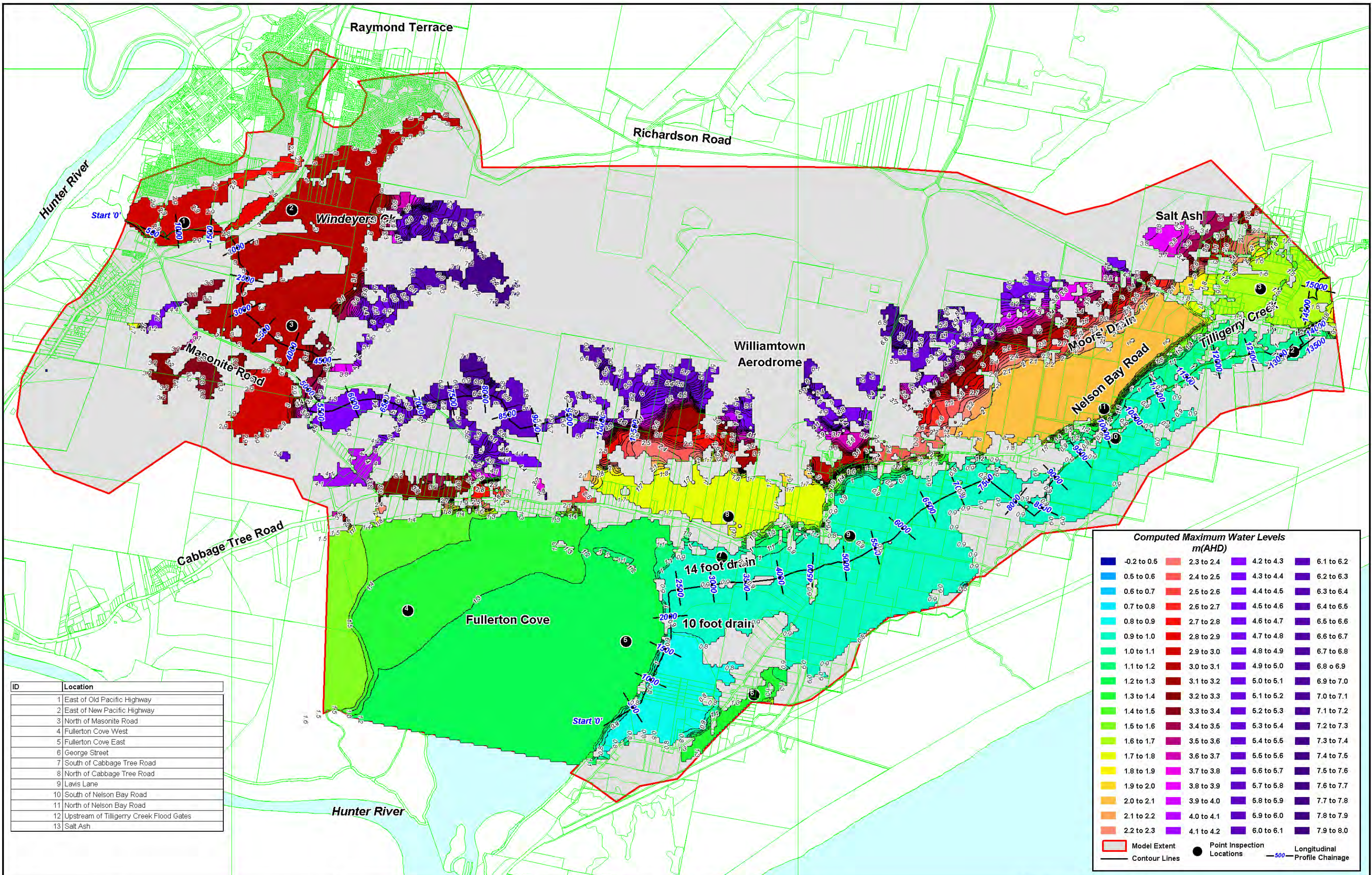


Williamtown Flood Study - Design Event : 2% AEP
Envelope of Maximum Flood Levels from TUFLOW Models:
 Run8.tcf & Run9.tcf

Figure 2%AEP_h_R1

I:\B12870_\pe\DRG\Flood Levels\2%AEP_h_R1 wor



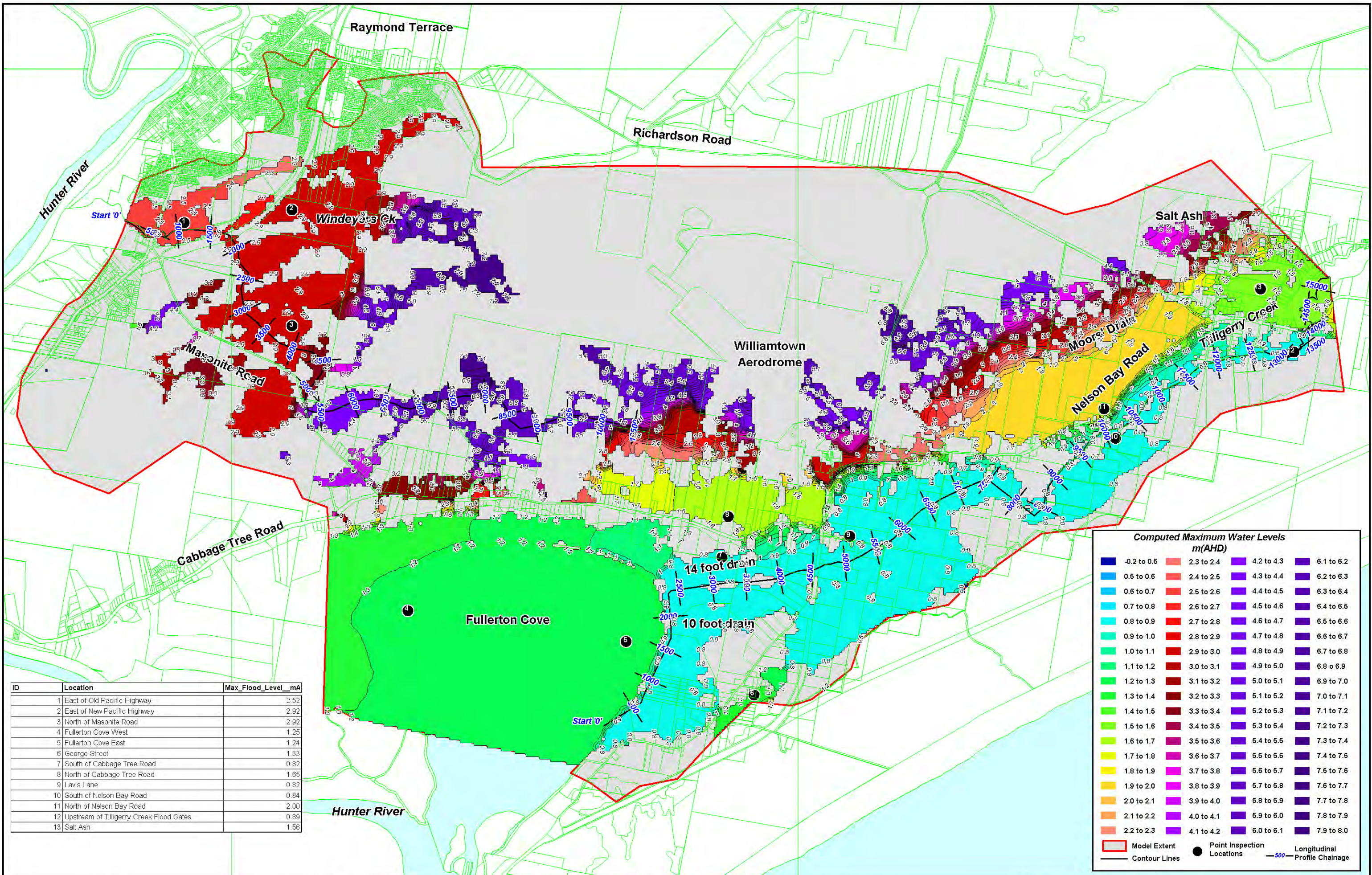


Williamtown Flood Study - Design Event : 5% AEP
Envelope of Maximum Flood Levels from TUFLOW Models:
 Run6.tcf & Run7.tcf

Figure 5%AEP_h_R1

I:\B12870_\pe\DRG\Flood Levels\5%AEP_h_R1 wor



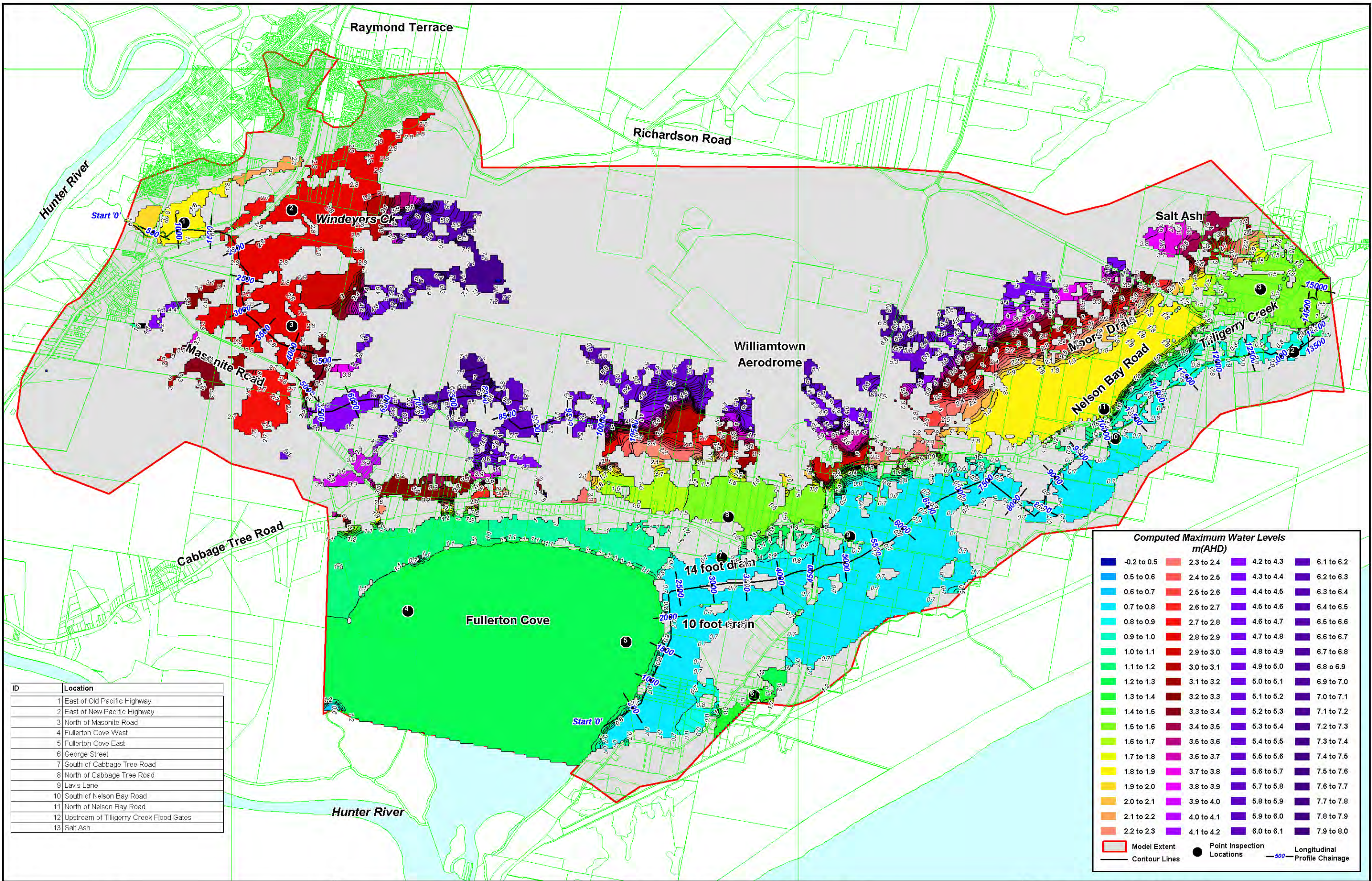


Williamtown Flood Study - Design Event : 10% AEP
 Envelope of Maximum Flood Levels from TUFLOW Models:
 Run4.tcf & Run5.tcf

Figure 10%AEP_h_R1

I:\B12870_\pe\DRG\Flood Levels\10%AEP_h_R1.wor

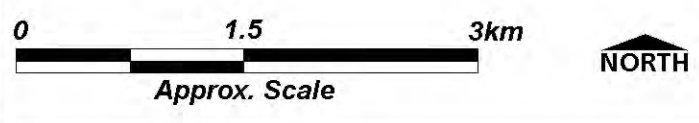




ID	Location
1	East of Old Pacific Highway
2	East of New Pacific Highway
3	North of Masonite Road
4	Fullerton Cove West
5	Fullerton Cove East
6	George Street
7	South of Cabbage Tree Road
8	North of Cabbage Tree Road
9	Lavis Lane
10	South of Nelson Bay Road
11	North of Nelson Bay Road
12	Upstream of Tilligerry Creek Flood Gates
13	Salt Ash

Computed Maximum Water Levels m(AHD)			
0.2 to 0.5	2.3 to 2.4	4.2 to 4.3	6.1 to 6.2
0.5 to 0.6	2.4 to 2.5	4.3 to 4.4	6.2 to 6.3
0.6 to 0.7	2.5 to 2.6	4.4 to 4.5	6.3 to 6.4
0.7 to 0.8	2.6 to 2.7	4.5 to 4.6	6.4 to 6.5
0.8 to 0.9	2.7 to 2.8	4.6 to 4.7	6.5 to 6.6
0.9 to 1.0	2.8 to 2.9	4.7 to 4.8	6.6 to 6.7
1.0 to 1.1	2.9 to 3.0	4.8 to 4.9	6.7 to 6.8
1.1 to 1.2	3.0 to 3.1	4.9 to 5.0	6.8 to 6.9
1.2 to 1.3	3.1 to 3.2	5.0 to 5.1	6.9 to 7.0
1.3 to 1.4	3.2 to 3.3	5.1 to 5.2	7.0 to 7.1
1.4 to 1.5	3.3 to 3.4	5.2 to 5.3	7.1 to 7.2
1.5 to 1.6	3.4 to 3.5	5.3 to 5.4	7.2 to 7.3
1.6 to 1.7	3.5 to 3.6	5.4 to 5.5	7.3 to 7.4
1.7 to 1.8	3.6 to 3.7	5.5 to 5.6	7.4 to 7.5
1.8 to 1.9	3.7 to 3.8	5.6 to 5.7	7.5 to 7.6
1.9 to 2.0	3.8 to 3.9	5.7 to 5.8	7.6 to 7.7
2.0 to 2.1	3.9 to 4.0	5.8 to 5.9	7.7 to 7.8
2.1 to 2.2	4.0 to 4.1	5.9 to 6.0	7.8 to 7.9
2.2 to 2.3	4.1 to 4.2	6.0 to 6.1	7.9 to 8.0

Model Extent
 Contour Lines
 Point Inspection Locations
 Longitudinal Profile Chainage

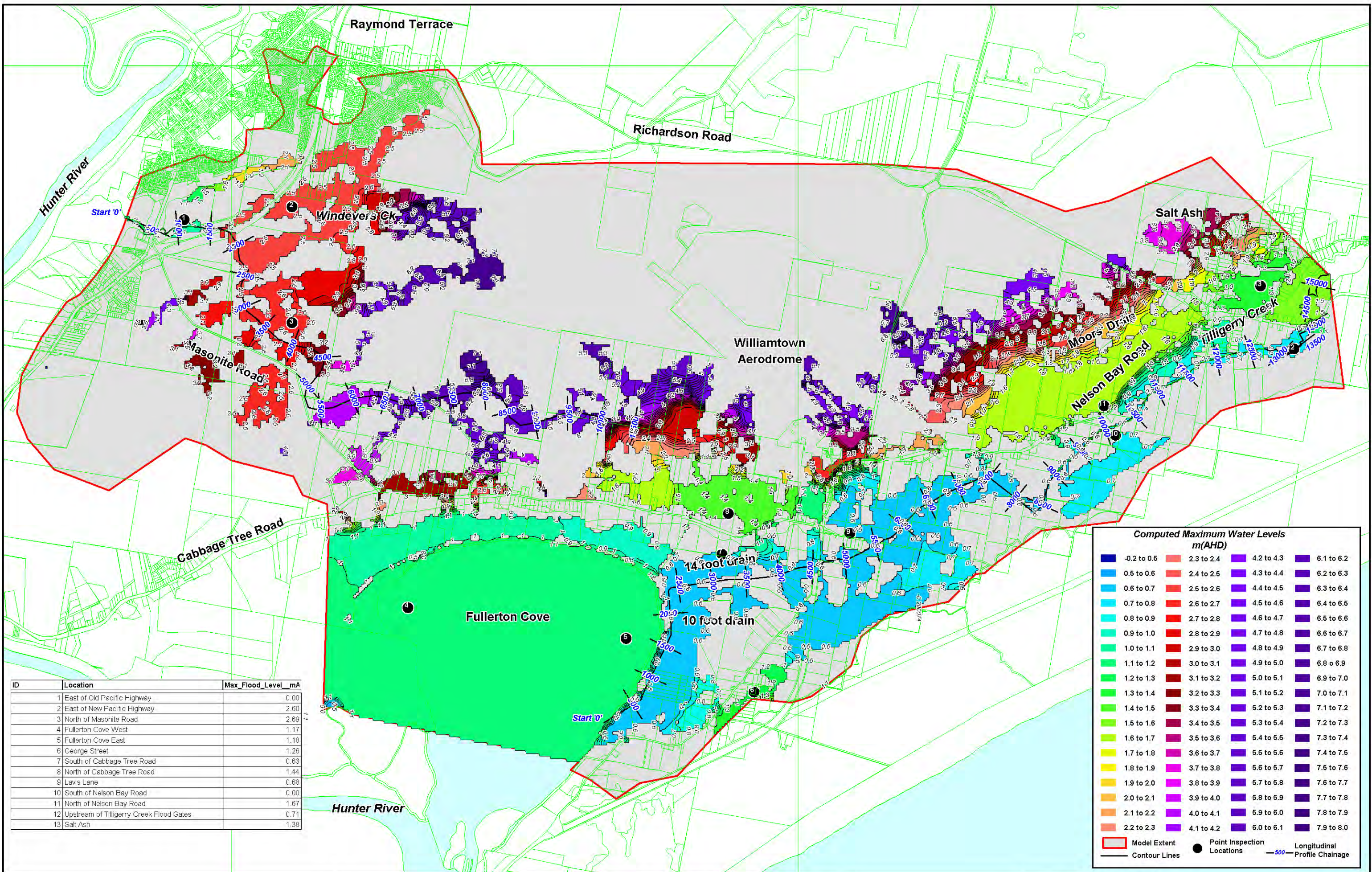


Williamtown Flood Study - Design Event : 20% AEP
 Envelope of Maximum Flood Levels from TUFLOW Models:
 Run2.tcf & Run3.tcf

Figure 20%AEP_h_R1

I:\B12870_\pe\DRG\Flood Levels\20%AEP_h_R1.wor



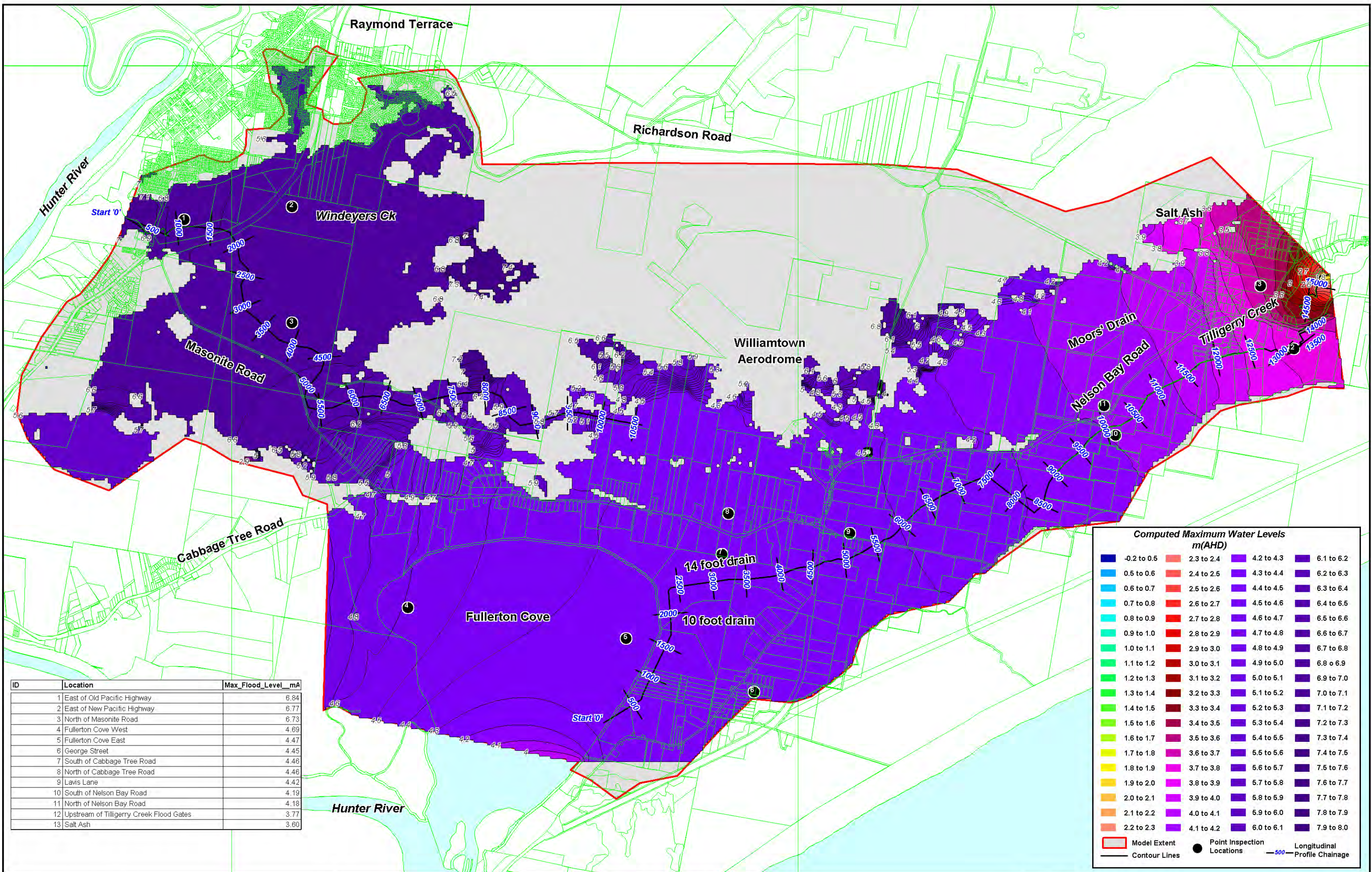


Williamtown Flood Study - Design Event : 50% AEP
 Maximum Flood Levels from TUFLOW Model:
 Run1.tcf

Figure 50%AEP_h_R1

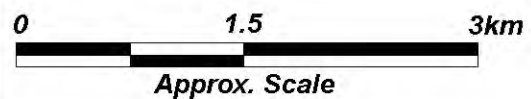
I:\B12870_\peVDRG\Flood Levels\50%AEP_h_R1.wor





Williamtown Flood Study - Design Event : PMF
 Envelope of Maximum Flood Levels from TUFLOW Models:
 Run16.tcf, Run17.tcf & Run18.tcf

Figure PMF_h_R1



I:\B12870_\peVDRG\Flood Levels\PMF_h_R1.WOR

