

Title:
1% AEP Design Event - Modelled Flood Velocities
Baseline Conditions

BMT WBM endeavours to ensure that the information provided in this map is correct at the time of publication. BMT WBM does not warrant, guarantee or make representations regarding the currency and accuracy of information contained in this map.

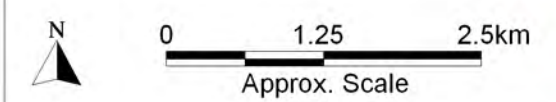
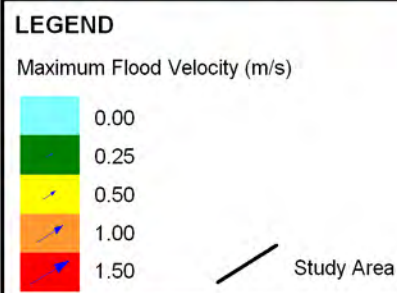
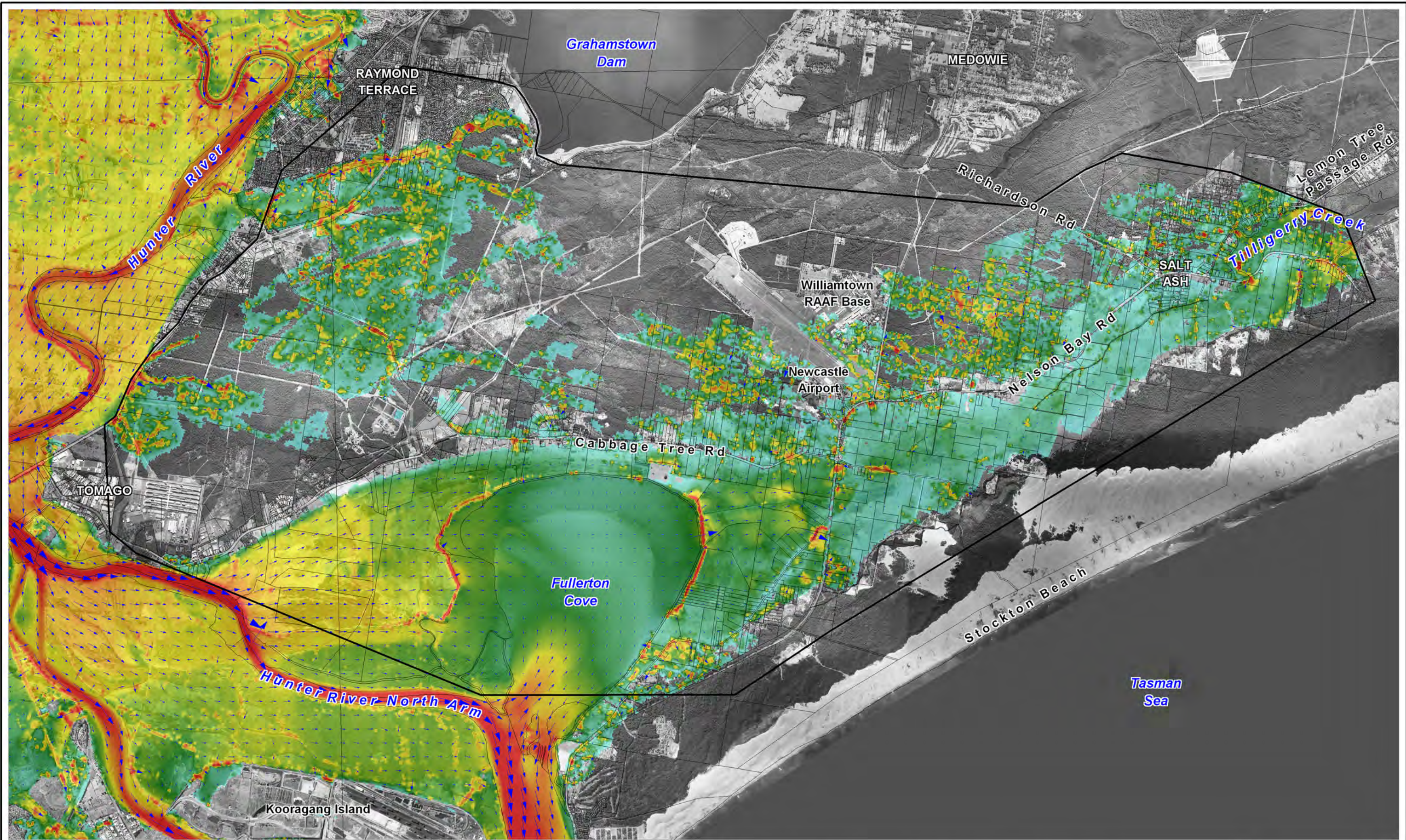


Figure: A-8	Rev: A
-----------------------	------------------



Filepath : K:\N2037_Williamtown_Saltash_Flood_Study_Review\mapinfo\workspaces\DRG_108_110401_1%AEP_Base_v.WOR



Title:
1% AEP Design Event - Modelled Flood Velocities
2050 Conditions: +0.4m Sea Level Rise

BMT WBM endeavours to ensure that the information provided in this map is correct at the time of publication. BMT WBM does not warrant, guarantee or make representations regarding the currency and accuracy of information contained in this map.

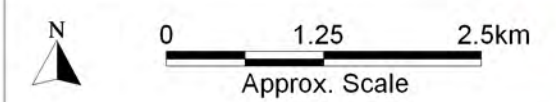
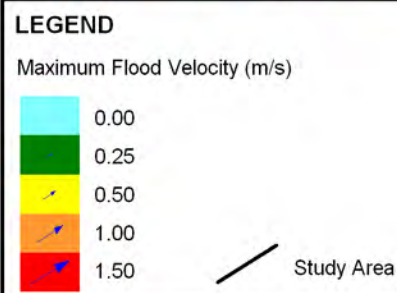
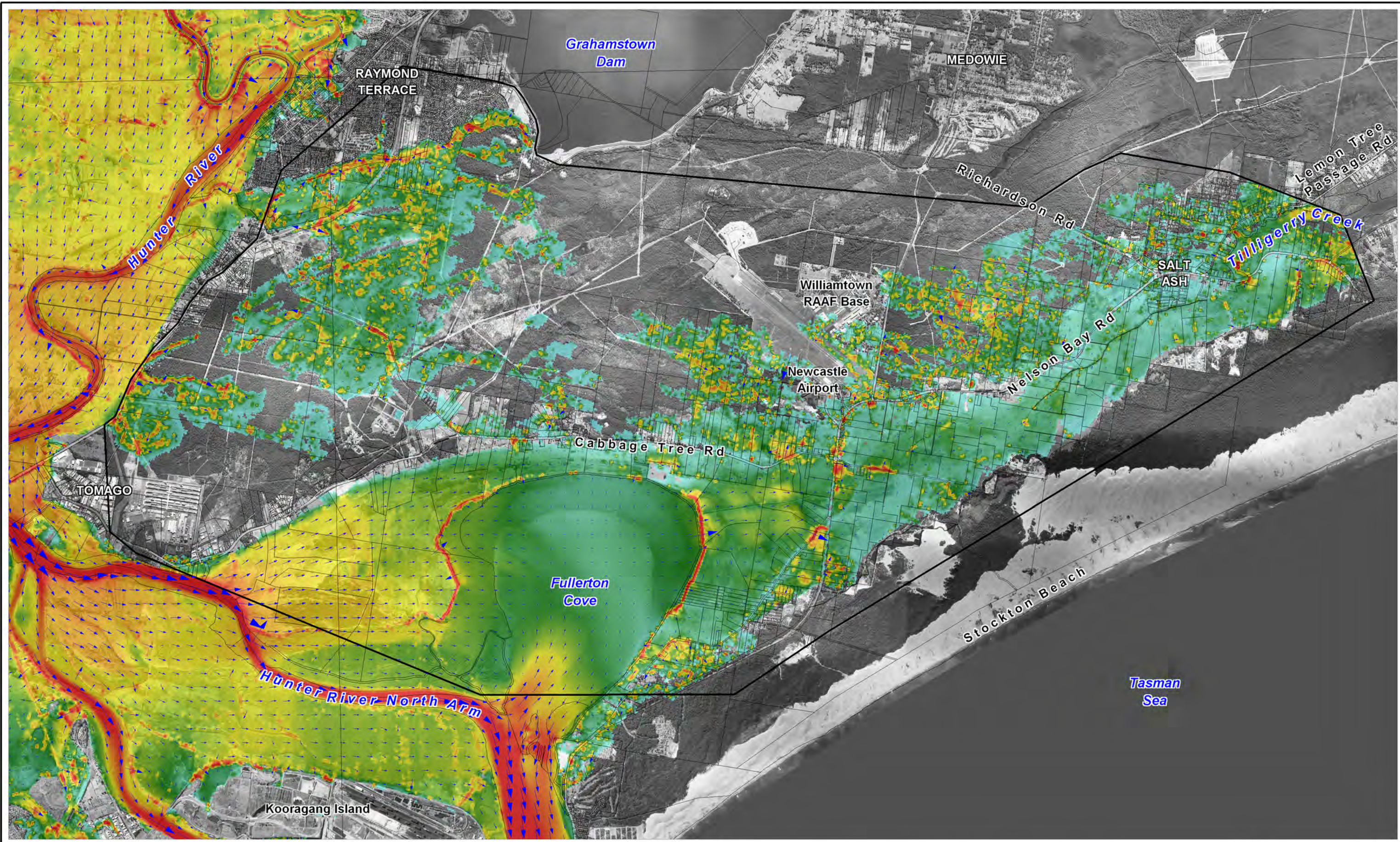


Figure:
A-9

Rev:
A



Filepath : K:\N2037_Williamtown_Saltash_Flood_Study_Review\mapinfo\workspaces\DRG_109_110405_1%AEF_2050_v.WOR

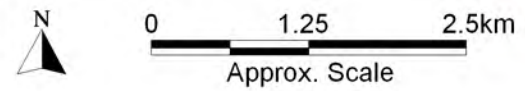


Title:
1% AEP Design Event - Modelled Flood Velocities
2050 Conditions: +0.4m Sea Level Rise +10% Flow

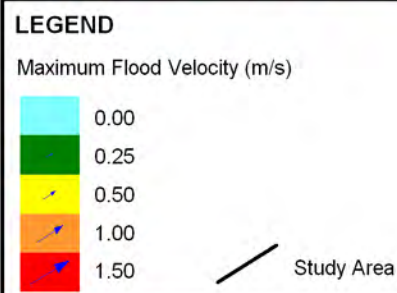
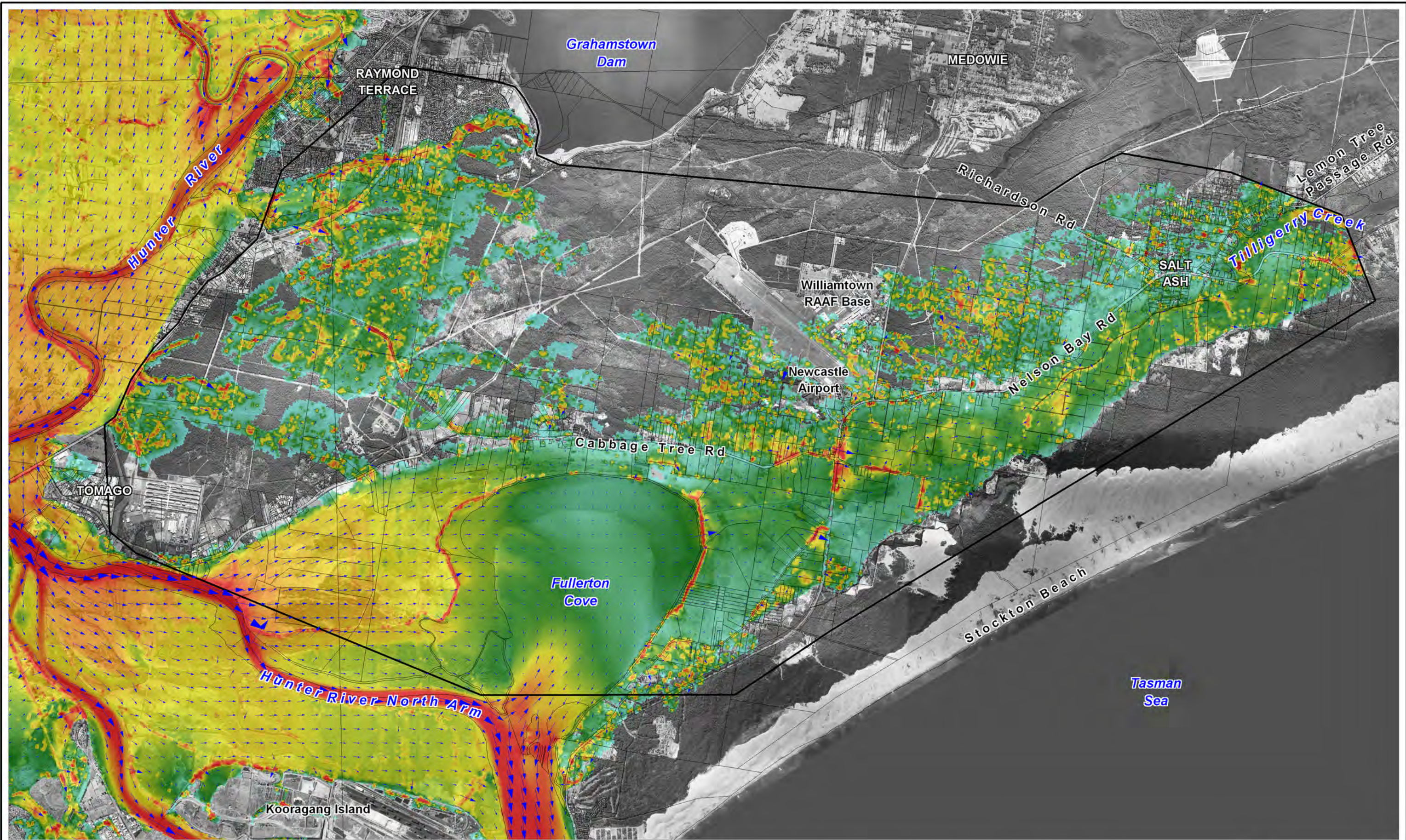
Figure:
A-10

Rev:
A

BMT WBM endeavours to ensure that the information provided in this map is correct at the time of publication. BMT WBM does not warrant, guarantee or make representations regarding the currency and accuracy of information contained in this map.



Filepath : K:\N2037_Williamtown_Saltash_Flood_Study_Review\mapinfo\workspaces\DRG_110_110405_1% AEP_2050+10%_v.WOR

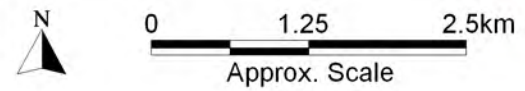


Title:
1% AEP Design Event - Modelled Flood Velocities
2050 Conditions: +0.4m Sea Level Rise +30% Flow

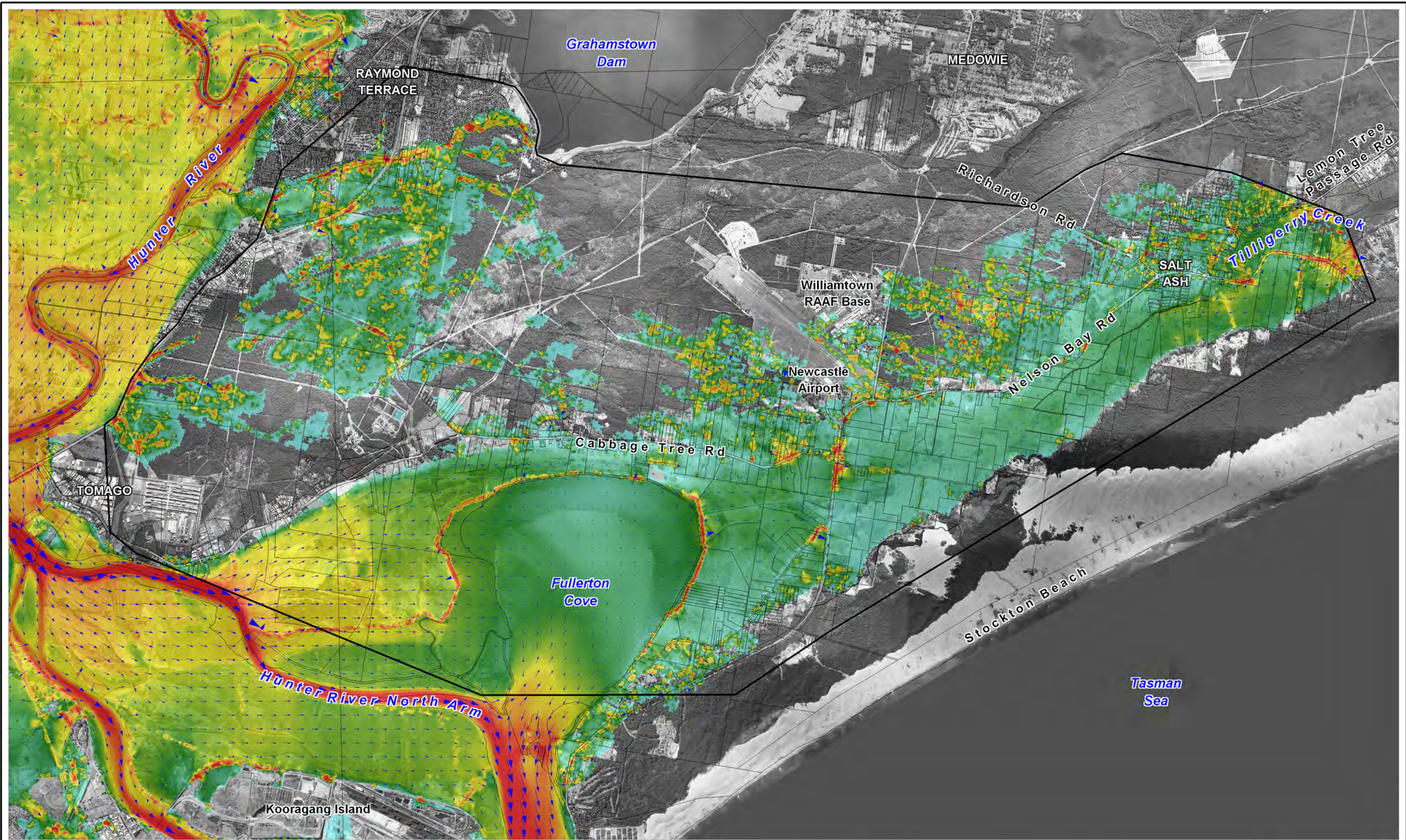
Figure:
A-11

Rev:
A

BMT WBM endeavours to ensure that the information provided in this map is correct at the time of publication. BMT WBM does not warrant, guarantee or make representations regarding the currency and accuracy of information contained in this map.

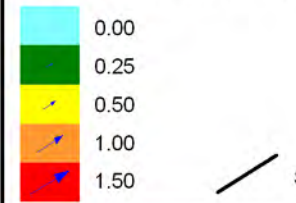


Filepath : K:\N2037_Williamtown_Saltash_Flood_Study_Review\mapinfo\workspaces\DRG_111_110405_1% AEP_2050+30%_v.WOR



LEGEND

Maximum Flood Velocity (m/s)



Study Area

Title:
1% AEP Design Event - Modelled Flood Velocities
2100 Conditions: +0.9m Sea Level Rise

BMT WBM endeavours to ensure that the information provided in this map is correct at the time of publication. BMT WBM does not warrant, guarantee or make representations regarding the currency and accuracy of information contained in this map.

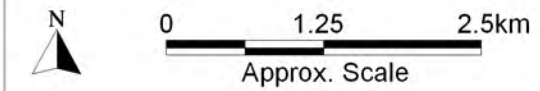
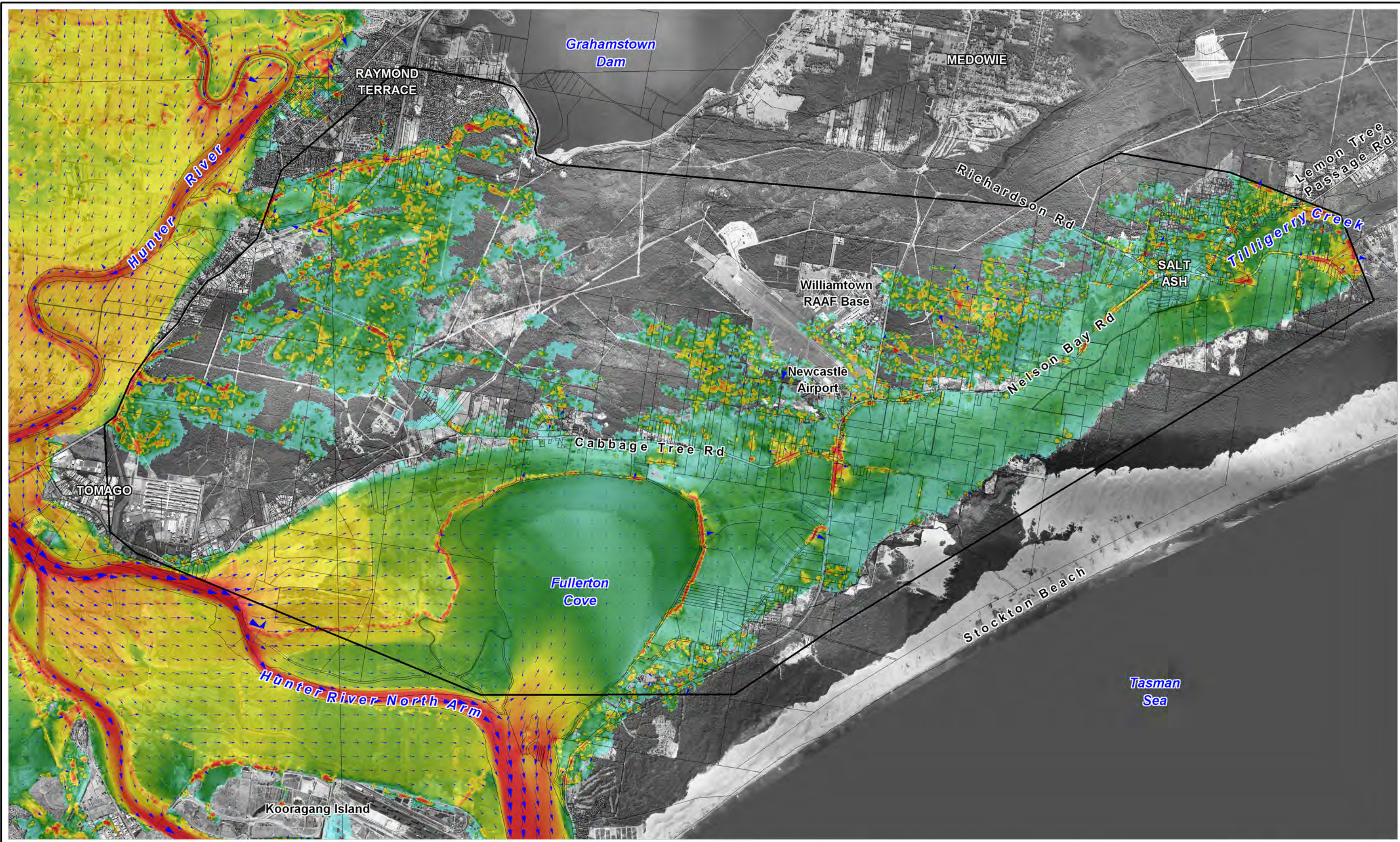


Figure:
A-12

Rev:
A

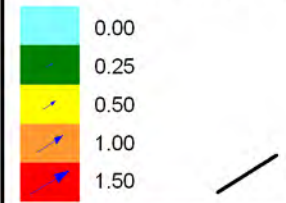


Filepath : K:\N2037_Williamtown_Saltash_Flood_Study_Review\mapinfo\workspaces\DRG_112_110405_1%AE2100_v.WOR



LEGEND

Maximum Flood Velocity (m/s)



Study Area

Title:
1% AEP Design Event - Modelled Flood Velocities
2100 Conditions: +0.9m Sea Level Rise +10% Flow

BMT WBM endeavours to ensure that the information provided in this map is correct at the time of publication. BMT WBM does not warrant, guarantee or make representations regarding the currency and accuracy of information contained in this map.

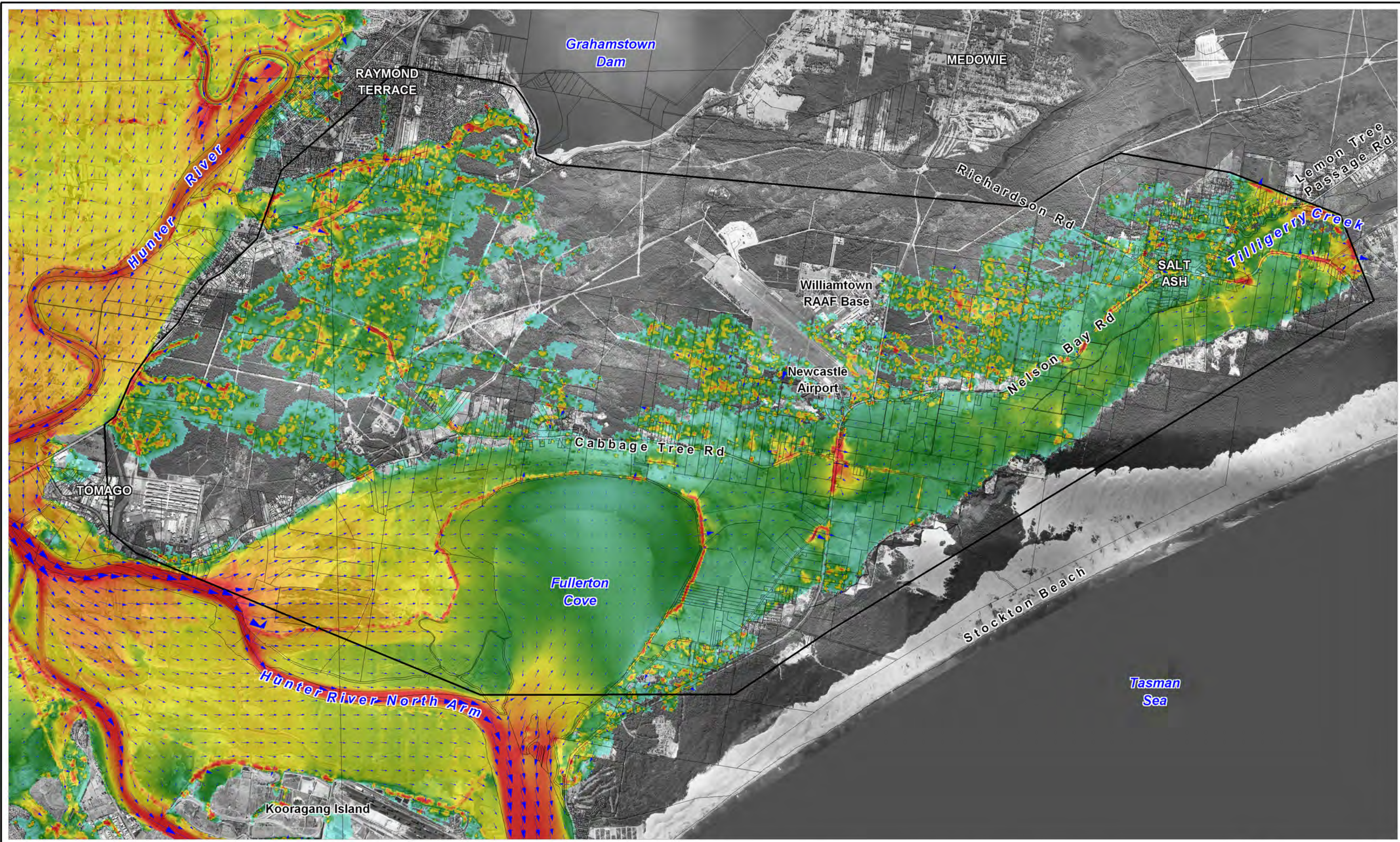


Figure:
A-13

Rev:
A

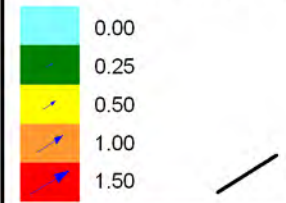


Filepath : K:\N2037_Williamtown_Saltash_Flood_Study_Review\mapinfo\workspaces\DRG_113_110405_1%AEP_2100+10%_v.WOR



LEGEND

Maximum Flood Velocity (m/s)



Study Area

Title:
1% AEP Design Event - Modelled Flood Velocities
2100 Conditions: +0.9m Sea Level Rise +30% Flow

BMT WBM endeavours to ensure that the information provided in this map is correct at the time of publication. BMT WBM does not warrant, guarantee or make representations regarding the currency and accuracy of information contained in this map.

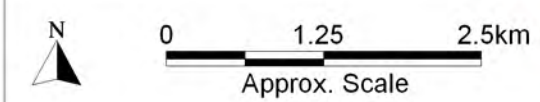
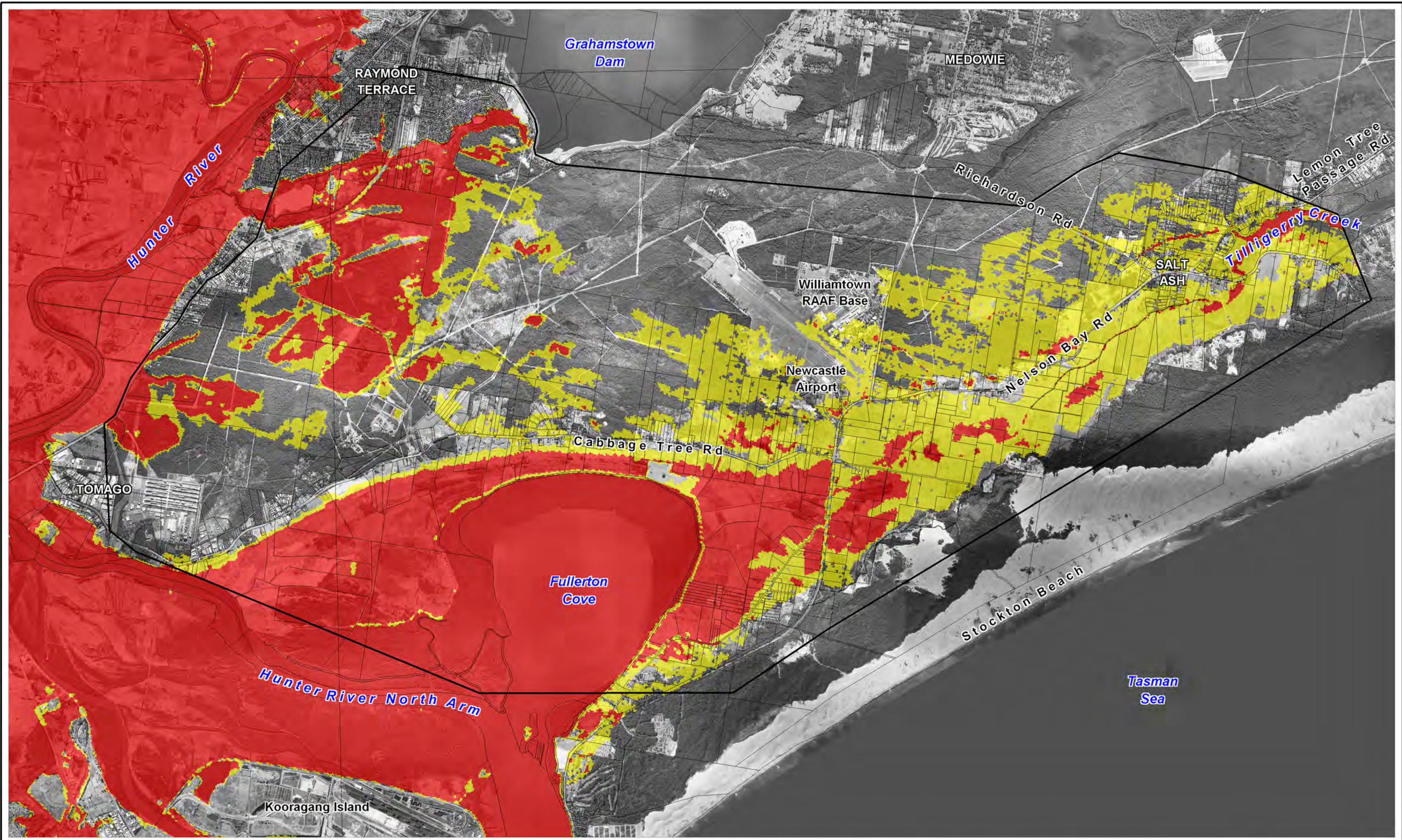


Figure:
A-14

Rev:
A



Filepath : K:\N2037_Williamtown_Saltash_Flood_Study_Review\mapinfo\workspaces\DRG_114_110405_1% AEP_2100+30%_v.WOR



LEGEND

Hazard Category

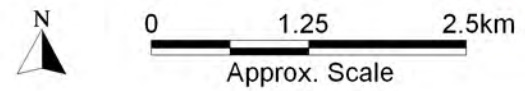
- Low
- High
- Study Area

Title:
**1% AEP Design Event - Provisional Hazard Categories
 Baseline Conditions**

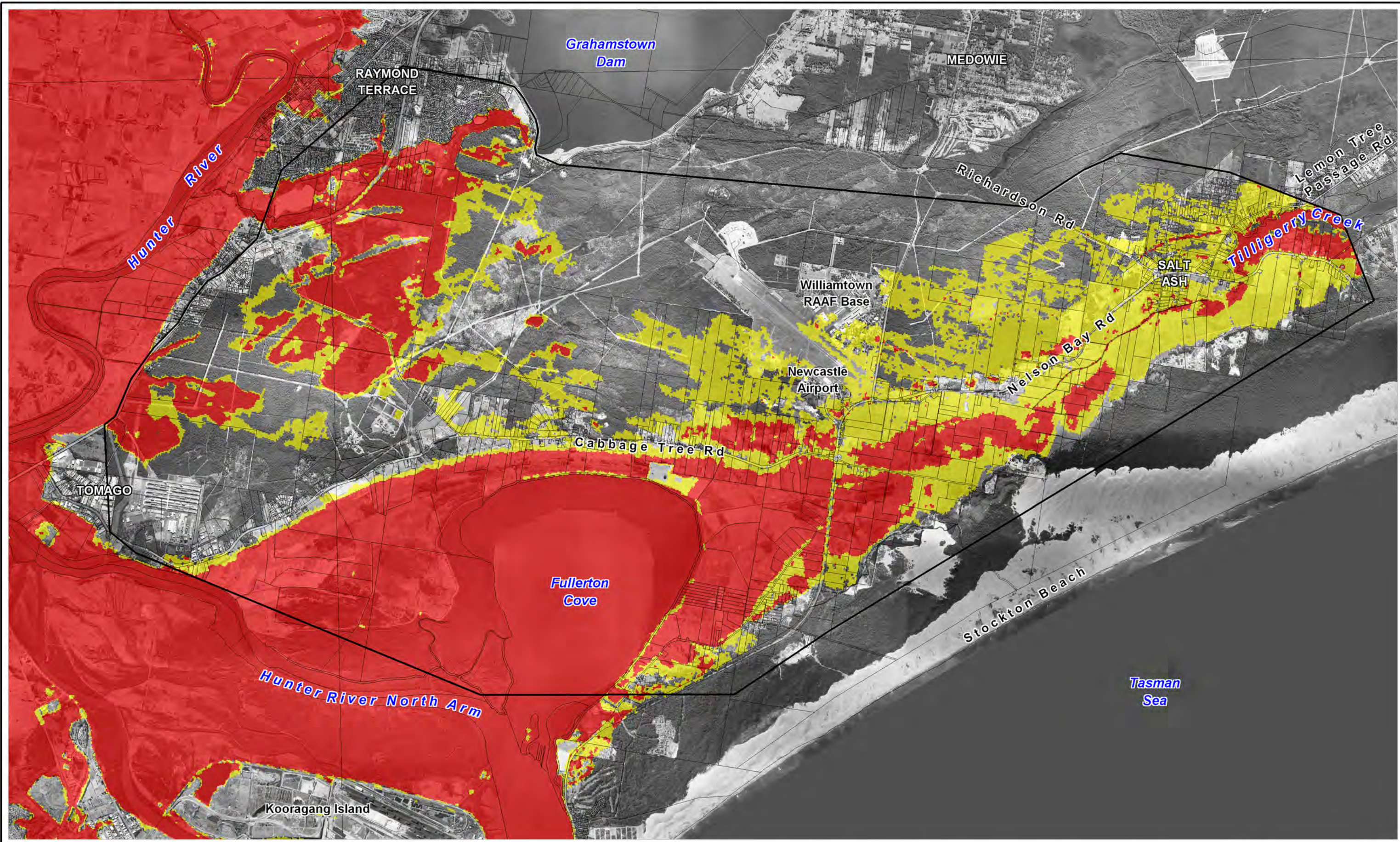
Figure:
A-15

Rev:
A

BMT WBM endeavours to ensure that the information provided in this map is correct at the time of publication. BMT WBM does not warrant, guarantee or make representations regarding the currency and accuracy of information contained in this map.



Filepath : K:\N2037_Williamtown_Saltash_Flood_Study_Review\mapinfo\workspaces\DRG_115_110405_1%AEP_Base_z.WOR



LEGEND

Hazard Category

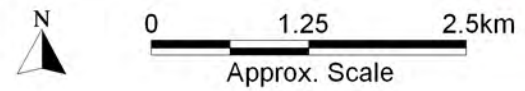
- Low
- High

Study Area

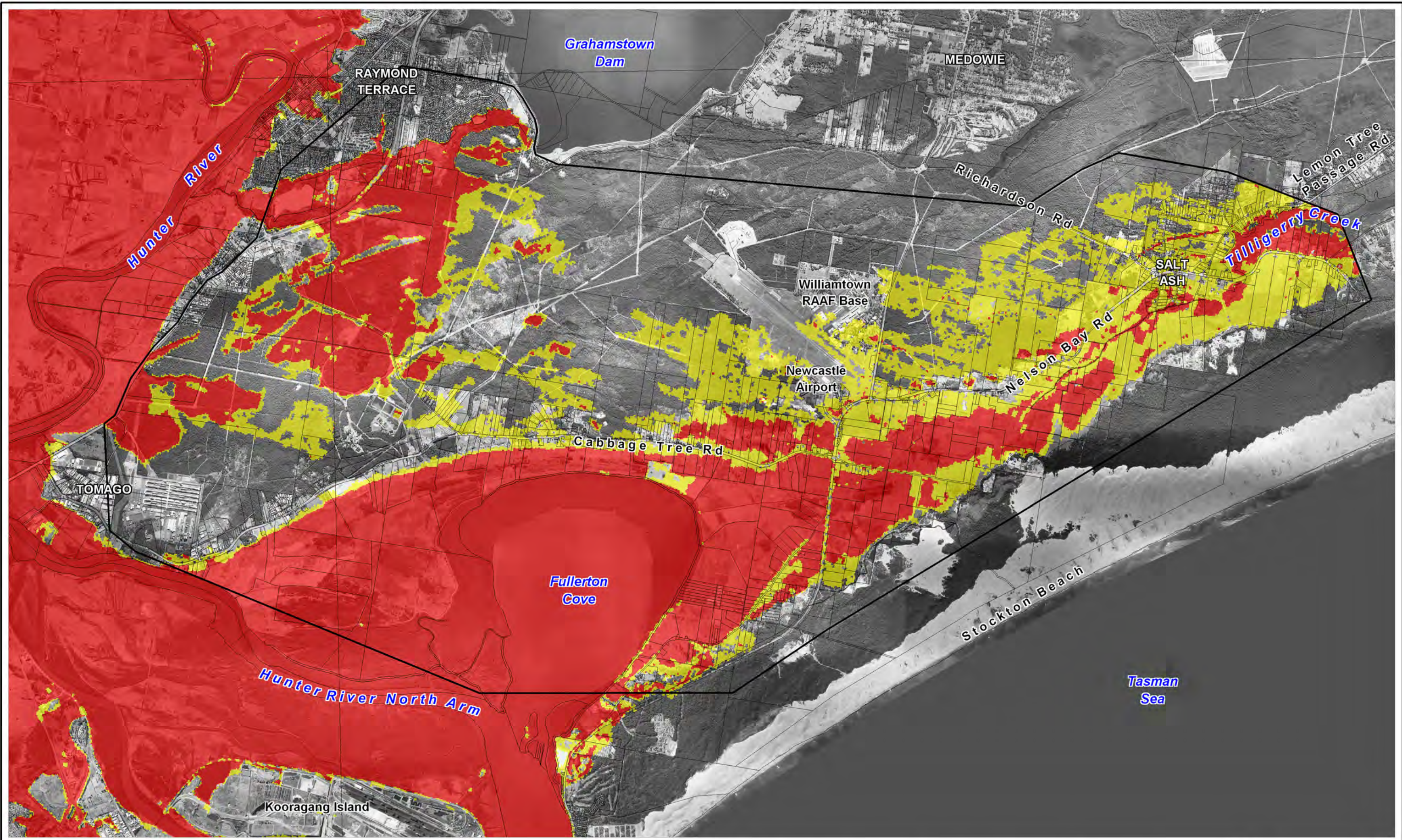
Title:
1% AEP Design Event - Provisional Hazard Categories
2050 Conditions: +0.4m Sea Level Rise

Figure: **A-16**
 Rev: **A**

BMT WBM endeavours to ensure that the information provided in this map is correct at the time of publication. BMT WBM does not warrant, guarantee or make representations regarding the currency and accuracy of information contained in this map.



Filepath : K:\N2037_Williamtown_Saltash_Flood_Study_Review\mapinfo\workspaces\DRG_116_110405_1% AEP_2050_z.WOR



LEGEND

Hazard Category

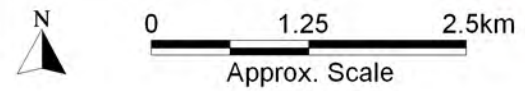
- Low
- High
- Study Area

Title:
**1% AEP Design Event - Provisional Hazard Categories
 2050 Conditions: +0.4m Sea Level Rise +10% Flow**

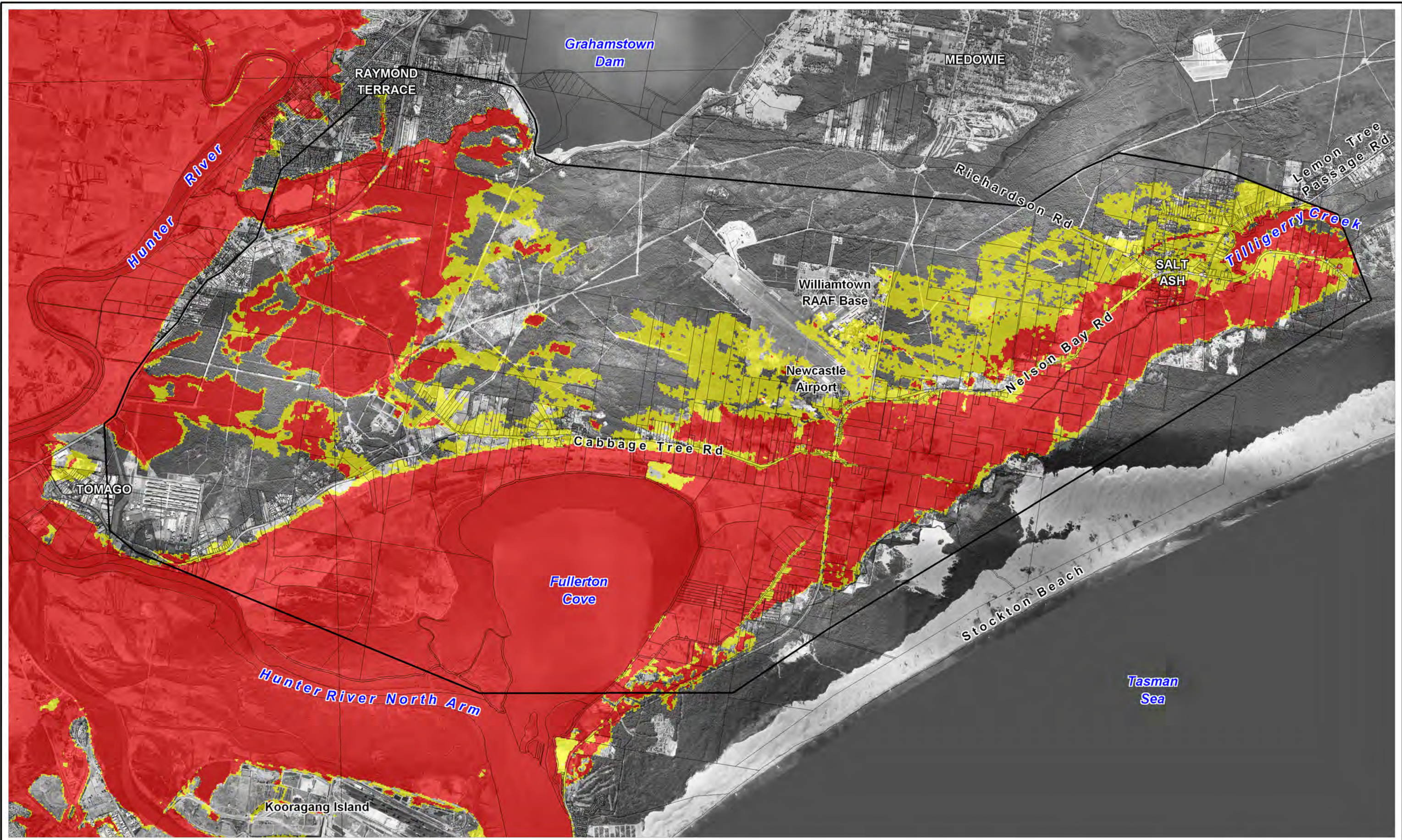
Figure:
A-17

Rev:
A

BMT WBM endeavours to ensure that the information provided in this map is correct at the time of publication. BMT WBM does not warrant, guarantee or make representations regarding the currency and accuracy of information contained in this map.



Filepath : K:\N2037_Williamtown_Saltash_Flood_Study_Review\mapinfo\workspaces\DRG_117_110405_1%AEP_2050+10%_z.WOR



LEGEND

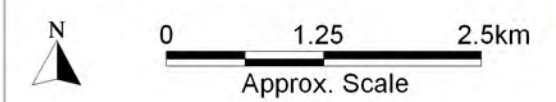
Hazard Category

- Low
- High
- Study Area

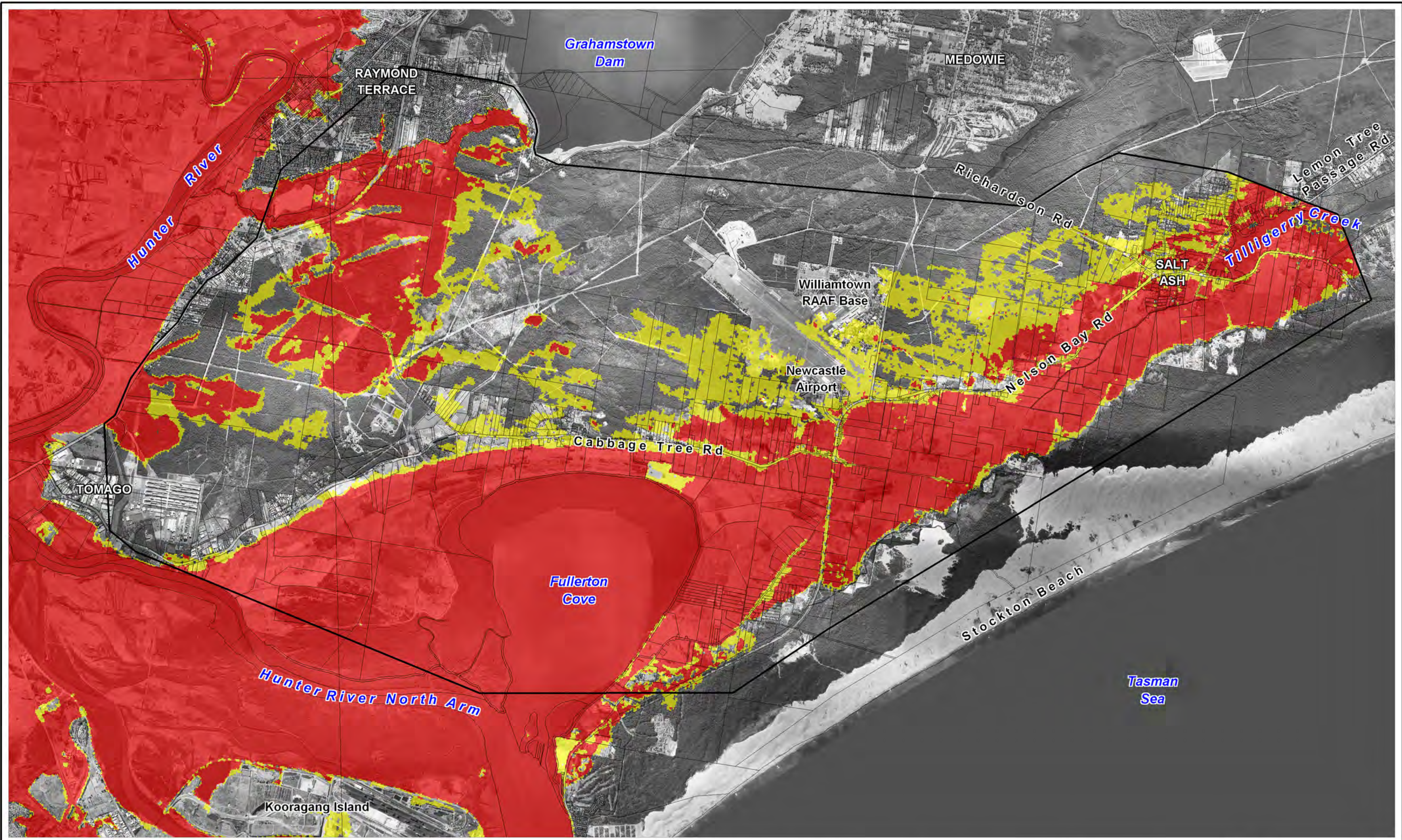
Title:
**1% AEP Design Event - Provisional Hazard Categories
 2050 Conditions: +0.4m Sea Level Rise +30% Flow**

Figure: **A-18**
 Rev: **A**

BMT WBM endeavours to ensure that the information provided in this map is correct at the time of publication. BMT WBM does not warrant, guarantee or make representations regarding the currency and accuracy of information contained in this map.



Filepath : K:\N2037_Williamtown_Saltash_Flood_Study_Review\mapinfo\workspaces\DRG_118_110405_1%AEP_2050+30%_z.WOR



LEGEND

Hazard Category

- Low
- High

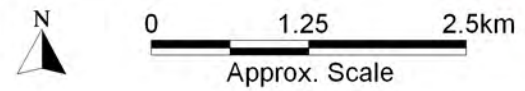
Study Area

Title:
1% AEP Design Event - Provisional Hazard Categories
2100 Conditions: +0.9m Sea Level Rise

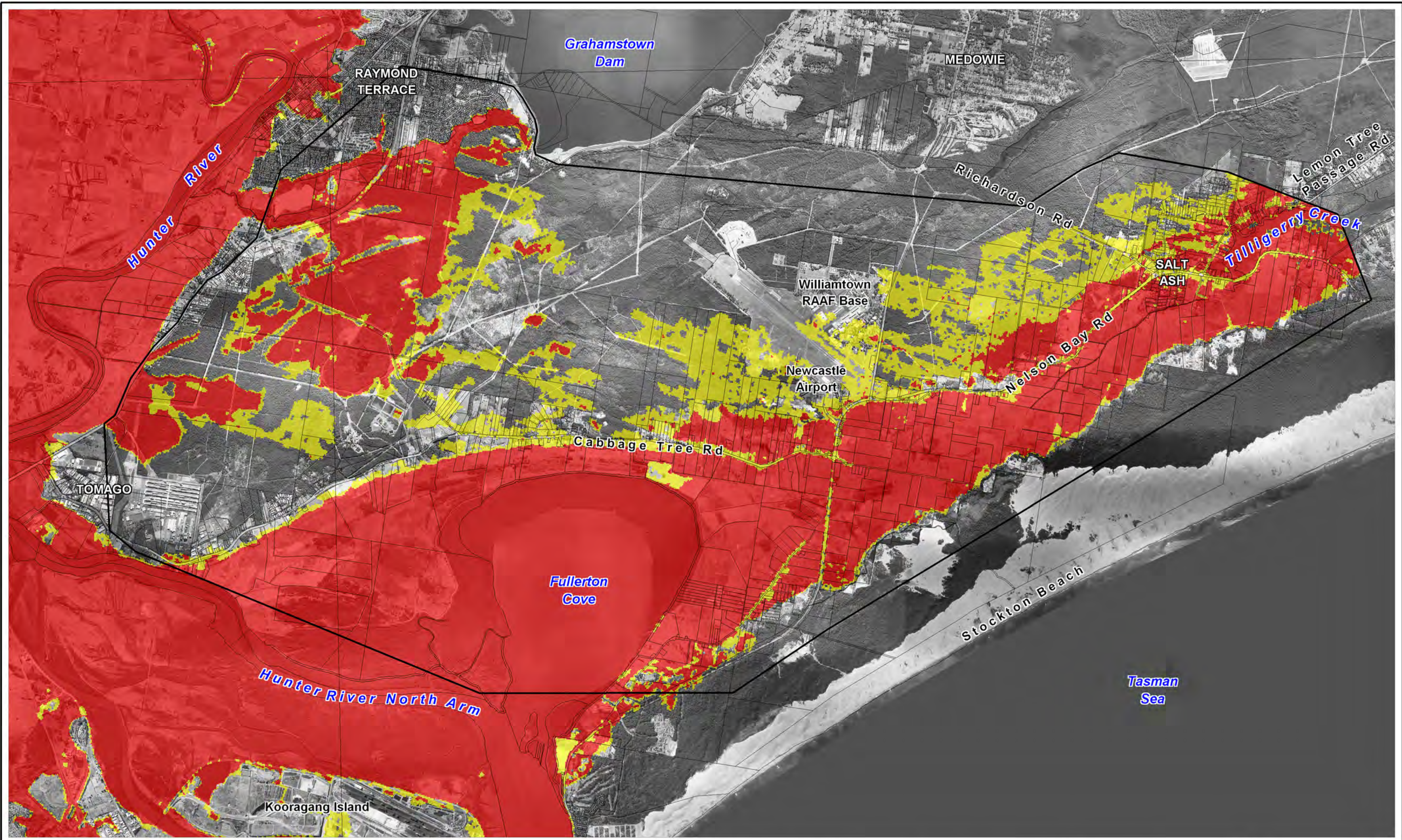
Figure:
A-19

Rev:
A

BMT WBM endeavours to ensure that the information provided in this map is correct at the time of publication. BMT WBM does not warrant, guarantee or make representations regarding the currency and accuracy of information contained in this map.



Filepath : K:\N2037_Williamtown_Saltash_Flood_Study_Review\mapinfo\workspaces\DRG_119_110405_1%AEP_2100_z.WOR



LEGEND

Hazard Category

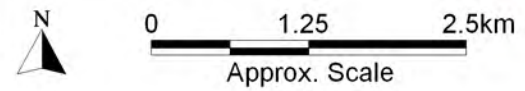
- Low
- High

Study Area

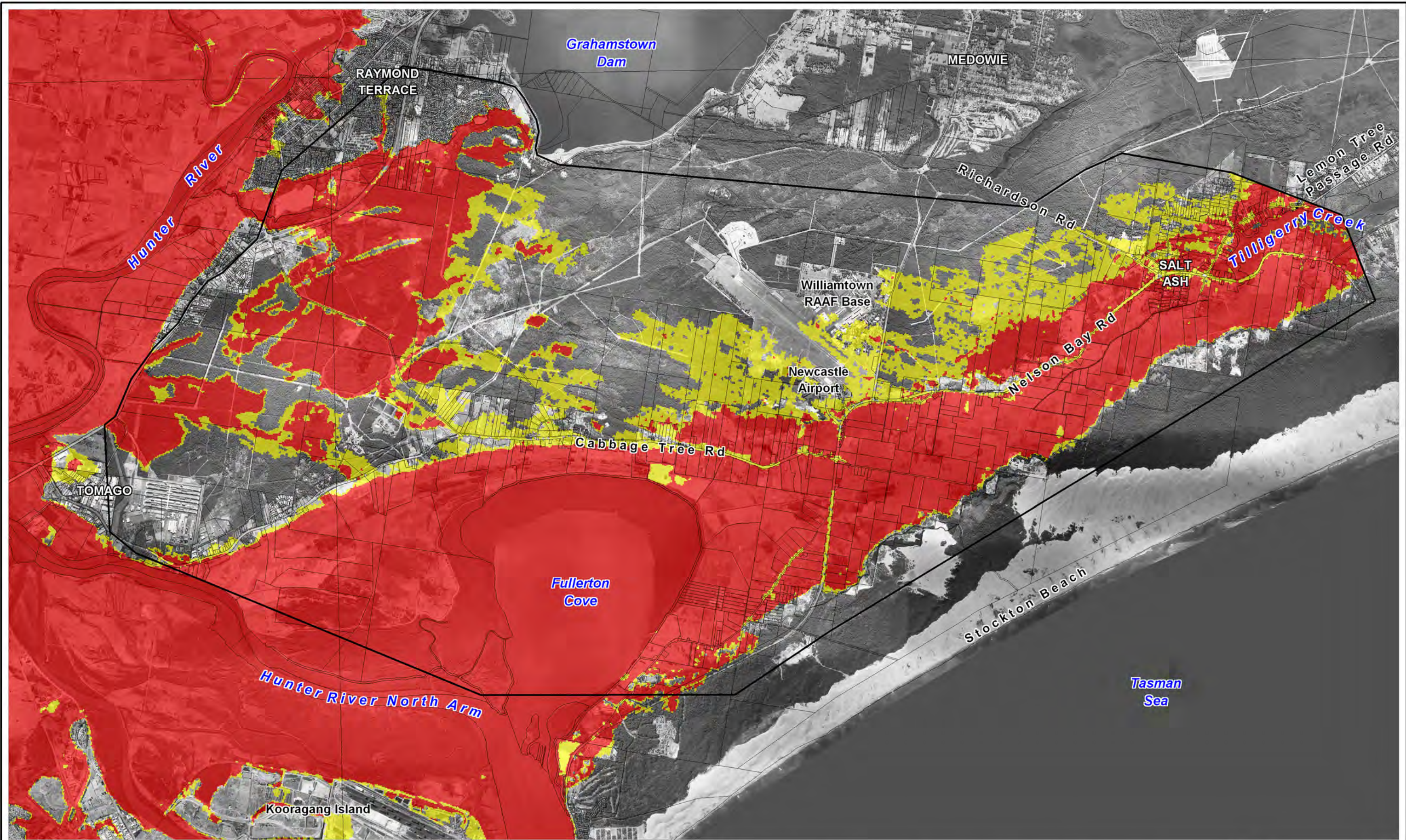
Title:
1% AEP Design Event - Provisional Hazard Categories
2100 Conditions: +0.9m Sea Level Rise +10% Flow

Figure: **A-20** Rev: **A**

BMT WBM endeavours to ensure that the information provided in this map is correct at the time of publication. BMT WBM does not warrant, guarantee or make representations regarding the currency and accuracy of information contained in this map.



Filepath : K:\N2037_Williamtown_Saltash_Flood_Study_Review\mapinfo\workspaces\DRG_120_110405_1%AEP_2100+10%_z.WOR



LEGEND

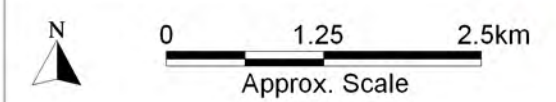
Hazard Category

- Low
- High
- Study Area

Title:
1% AEP Design Event - Provisional Hazard Categories
2100 Conditions: +0.9m Sea Level Rise +30% Flow

Figure: **A-21** Rev: **A**

BMT WBM endeavours to ensure that the information provided in this map is correct at the time of publication. BMT WBM does not warrant, guarantee or make representations regarding the currency and accuracy of information contained in this map.



Filepath : K:\N2037_Williamtown_Saltash_Flood_Study_Review\mapinfo\workspaces\DRG_121_110405_1%AEP_2100+30%_z.WOR