

Beach access

Birubi Headland | December and January



PORT STEPHENS
COUNCIL

Over the upcoming holiday period, traffic control and parking changes will be implemented on certain dates to make access to Birubi Headland a little easier for everyone. As there's limited parking we encourage you to take some time to plan your trip ahead.

Holiday period traffic changes

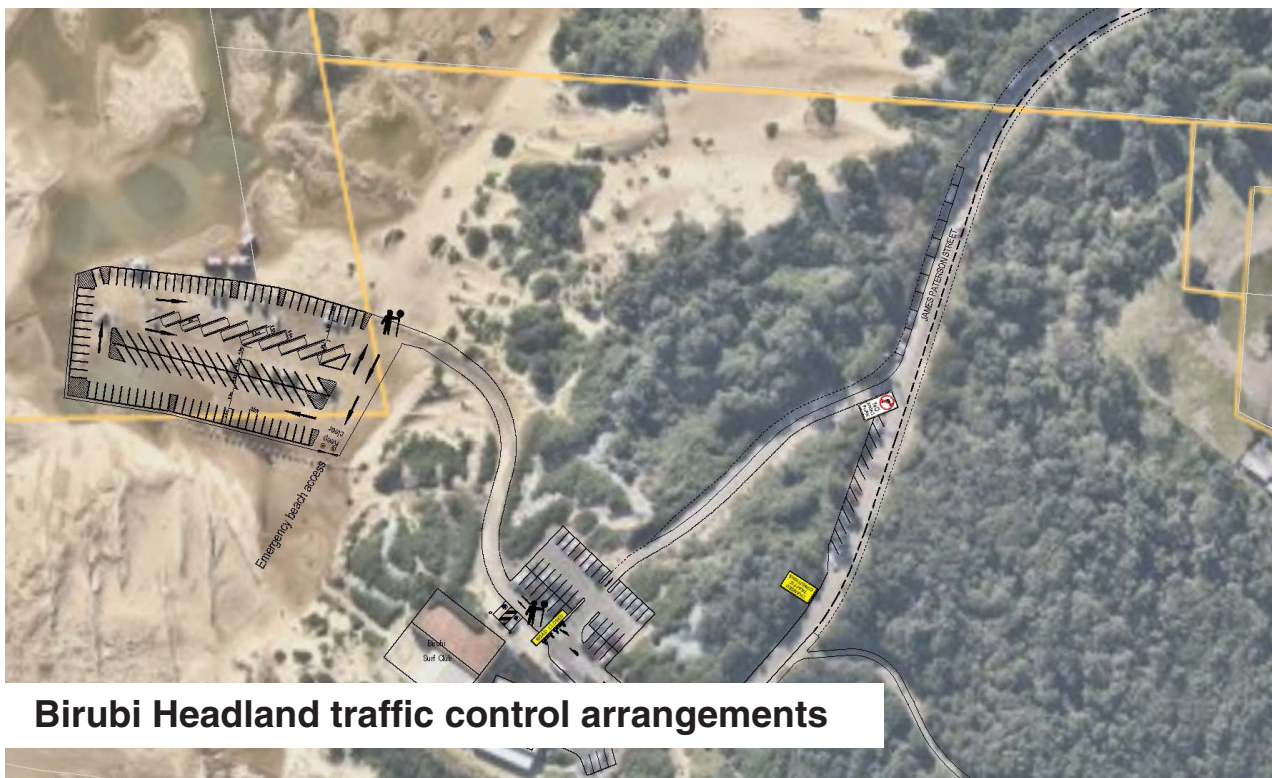
Traffic control at Birubi Headland will operate from 8am to 3pm (hours may be longer or shorter depending on traffic volume) on the following dates, inclusive:

- From Tuesday 26 December 2023 to Monday 1 January 2024
- From Friday 26 January to Sunday 28 January 2024 (Australia Day long weekend)

Please note: parking is not permitted on the eastern side of James Paterson Street, Anna Bay between 6am to 6pm during the above times.

Other beach options

Port Stephens is home to more than 26 bays and beaches, including other patrolled surf beaches. Learn more at pscouncil.info/beaches



Birubi Headland traffic control arrangements

