

Nelson Bay Public Domain Plan

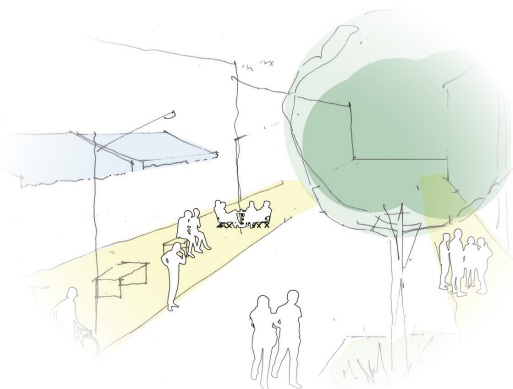
We have listened to what our community loves about the Bay, and we're working to revitalise the town centre to bring people back. The future vision for Nelson Bay is outlined in the Public Domain Plan – which sets out how we will create public spaces for our community now and into the future.

Three big moves are planned for Nelson Bay in an exciting 20-year vision that will create:

1. A greener town centre
2. Enhanced opportunities for walking and cycling
3. Quality spaces for everyone to enjoy.



- 1** A greener town centre
Better connections to the foreshore and Tomaree National Park.



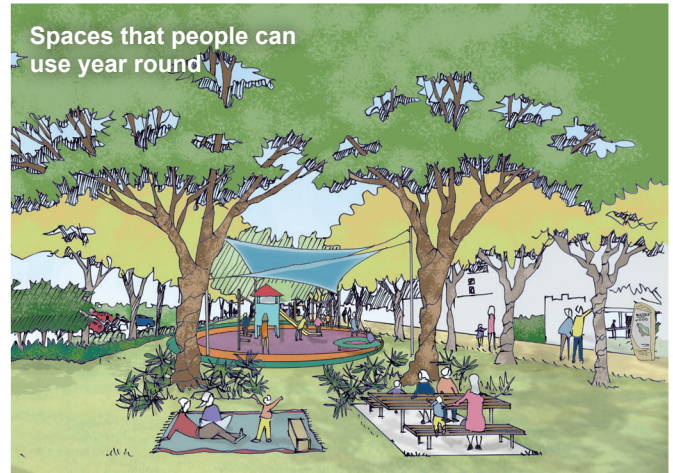
- 2** Enhancing opportunities for walking and cycling
Creating pedestrian and cycle friendly street environments, plus improving traffic flow.



- 3** Quality spaces for everyone to enjoy
Promoting new ways to use our spaces for leisure, for business and most of all, for fun.



Concept drawing only - Stockton Street Shared Zone



More trees, greener streets and better connections to the foreshore.

Next steps

The draft Nelson Bay Public Domain Plan, draft Streetscape Design Guidelines, and draft Wayfinding and Signage Strategy are on public exhibition from Thursday 28 February to Thursday 28 March 2019.

Downloads and submissions

You can download the documents, learn more about this project and provide your submission at our dedicated website page:

<https://haveyoursay.portstephens.nsw.gov.au/nelson-bay-public-domain-plan>

Hard copies of these plans are also available for viewing at the following locations:

- Tomaree Library, 7 Community Close, Salamander Bay
- Council's Administration Building, 116 Adelaide Street, Raymond Terrace
- Nelson Bay Visitors Information Centre, 60 Victoria Parade, Nelson Bay