

FIGURE C17A  
PROVISIONAL HYDRAULIC HAZARD  
PATERSON RIVER CATCHMENT  
VACY TO TOCAL  
5% AEP EVENT

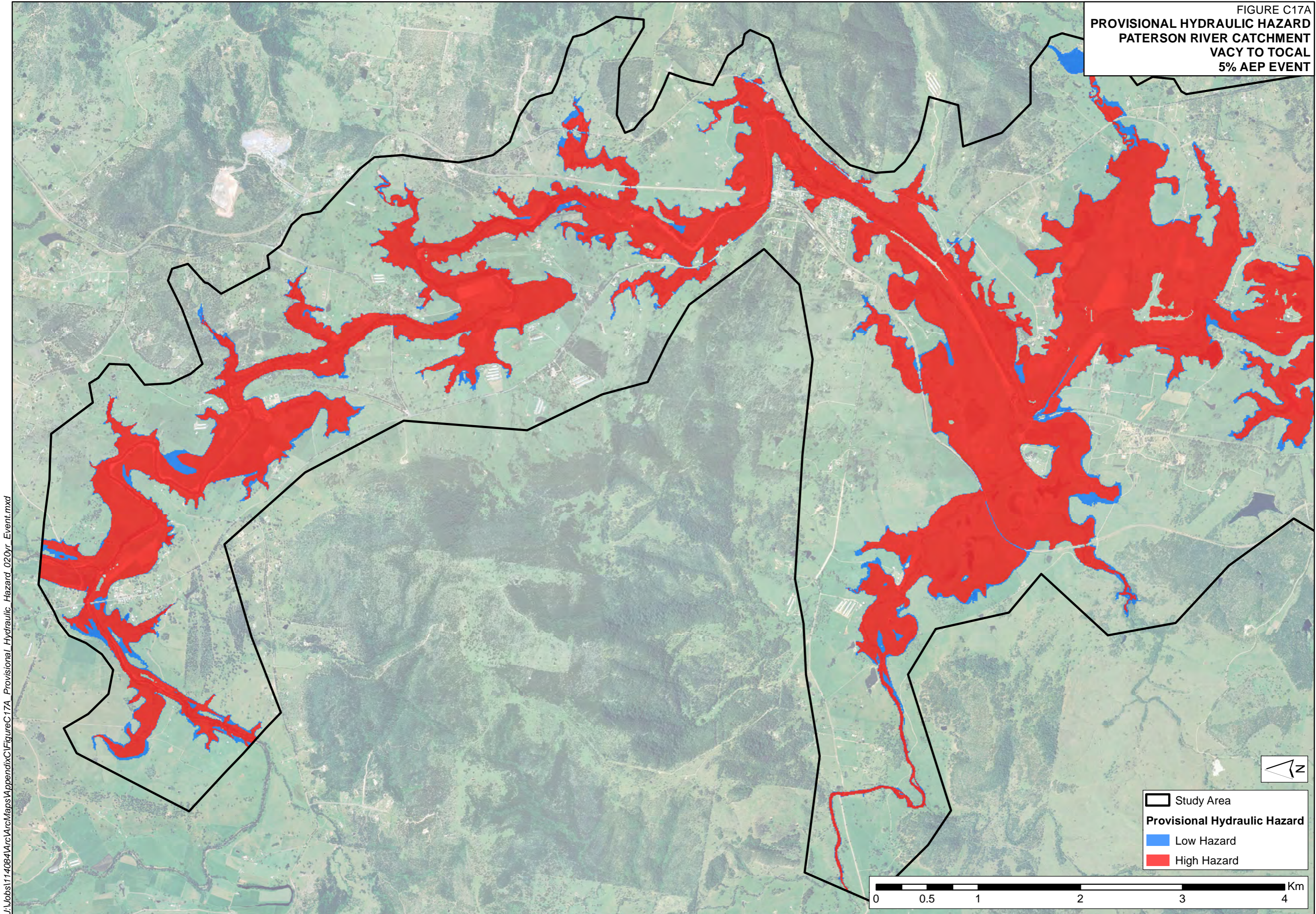
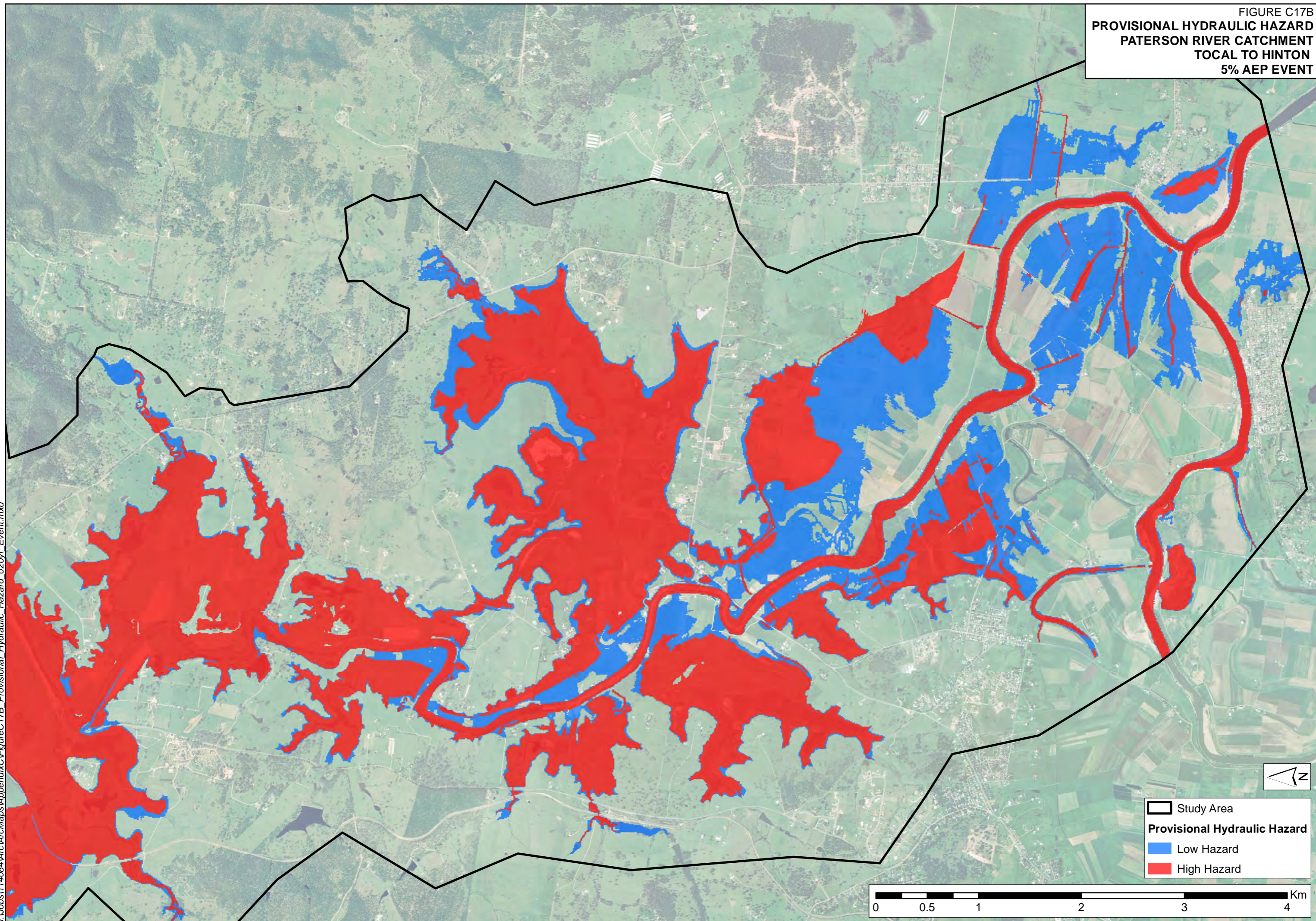




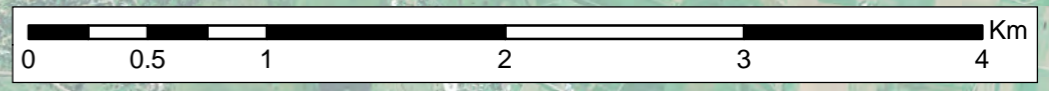
FIGURE C17B  
PROVISIONAL HYDRAULIC HAZARD  
PATERSON RIVER CATCHMENT  
TOTAL TO HINTON  
5% AEP EVENT



Study Area

**Provisional Hydraulic Hazard**

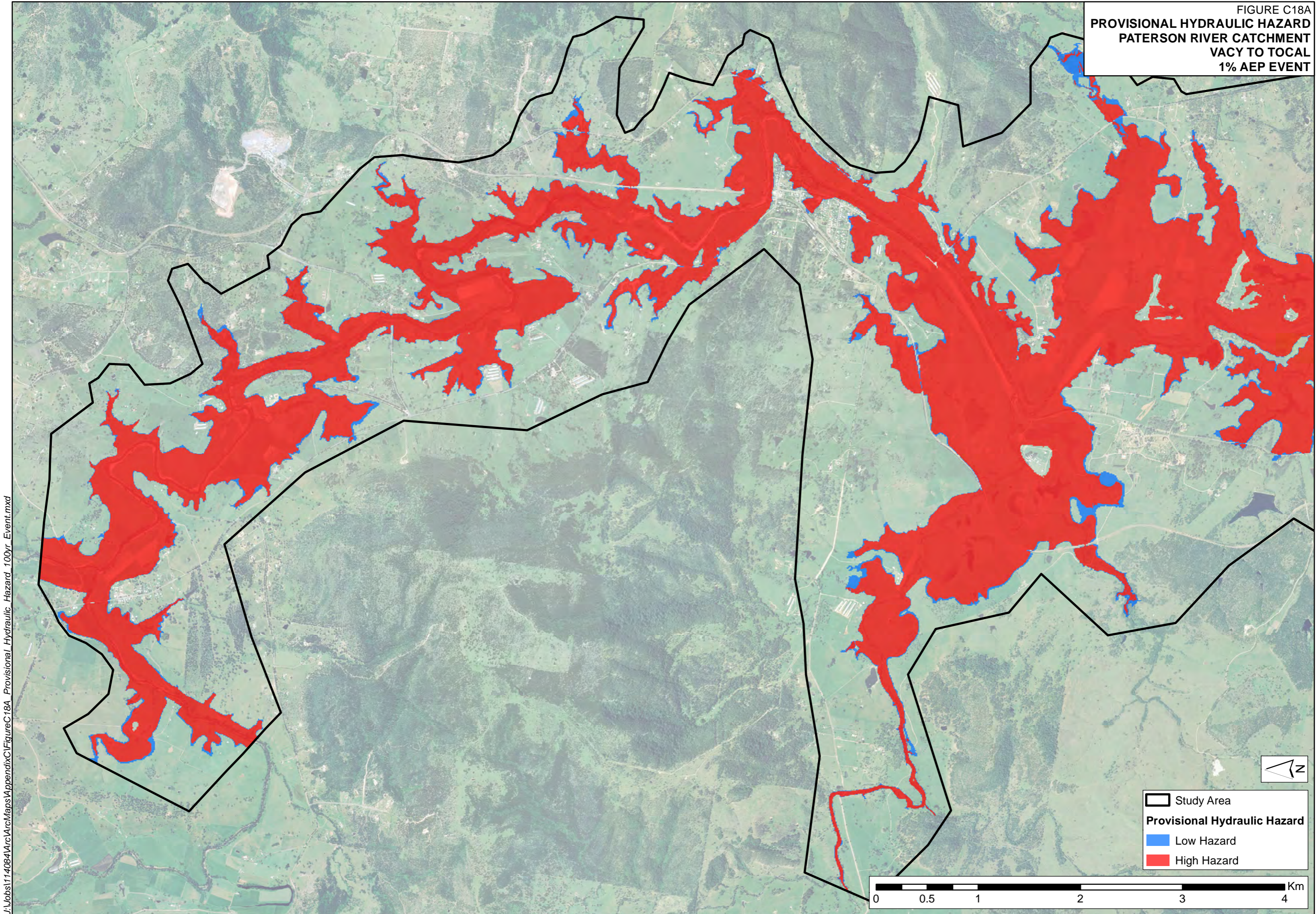
- Low Hazard
- High Hazard



J:\Jobs\114084\Arc\Maps\AppendixC\FigureC17B\_Provisional\_Hydraulic\_Hazard\_020yr\_Event.mxd



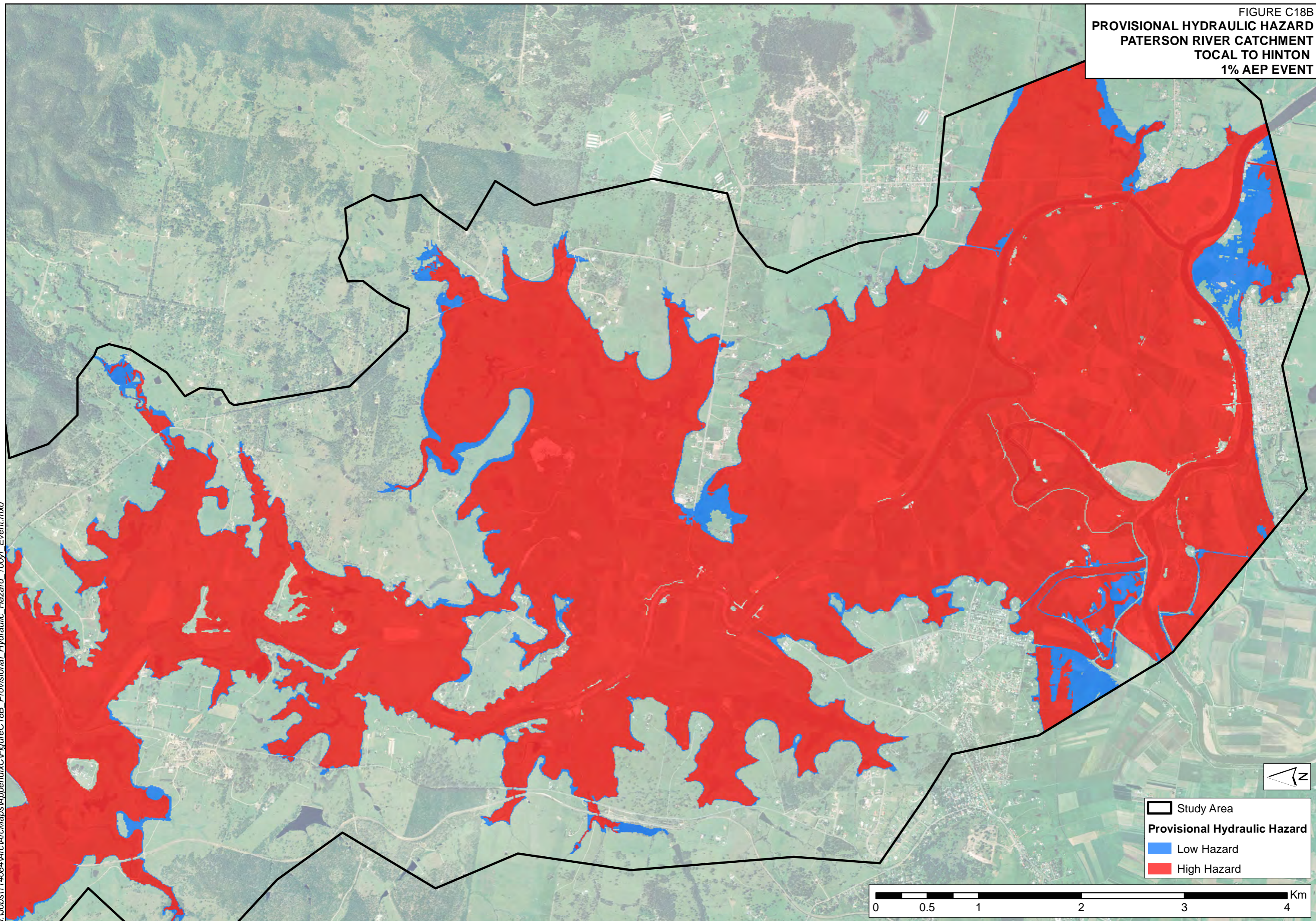
FIGURE C18A  
PROVISIONAL HYDRAULIC HAZARD  
PATERSON RIVER CATCHMENT  
VACY TO TCAL  
1% AEP EVENT



J:\Jobs\114084\Arc\Maps\AppendixC\FigureC18A\_Provisional\_Hydraulic\_Hazard\_100yr\_Event.mxd



FIGURE C18B  
PROVISIONAL HYDRAULIC HAZARD  
PATERSON RIVER CATCHMENT  
TOTAL TO HINTON  
1% AEP EVENT



J:\Jobs\114084\Arc\Maps\Appendix\C\FigureC18B\_Provisional\_Hydraulic\_Hazard\_100Yr\_Event.mxd

Study Area

**Provisional Hydraulic Hazard**

- Low Hazard
- High Hazard

0 0.5 1 2 3 4 Km



FIGURE C19A  
PROVISIONAL HYDRAULIC HAZARD  
PATERSON RIVER CATCHMENT  
VACY TO TOCAL  
PMF EVENT

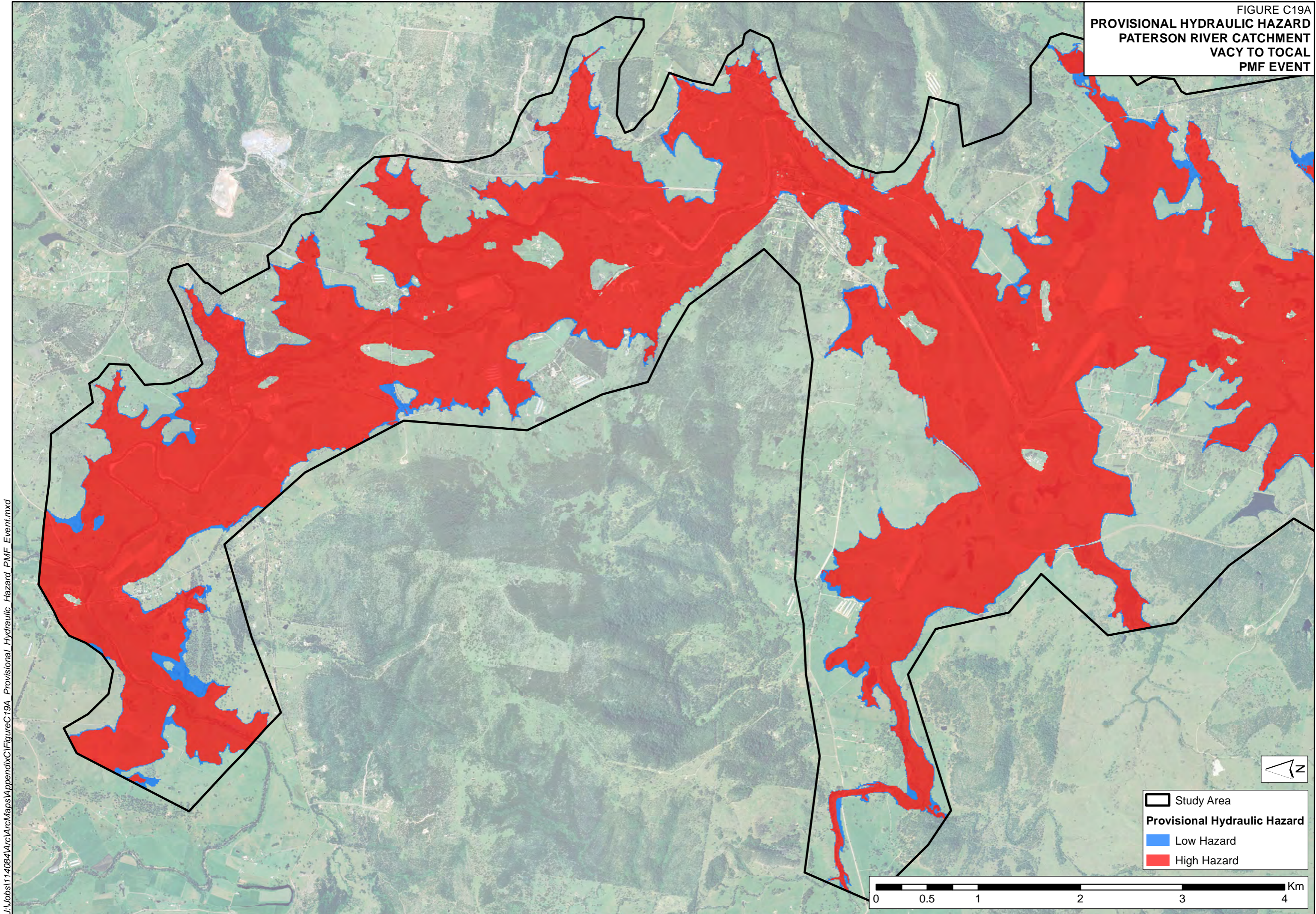
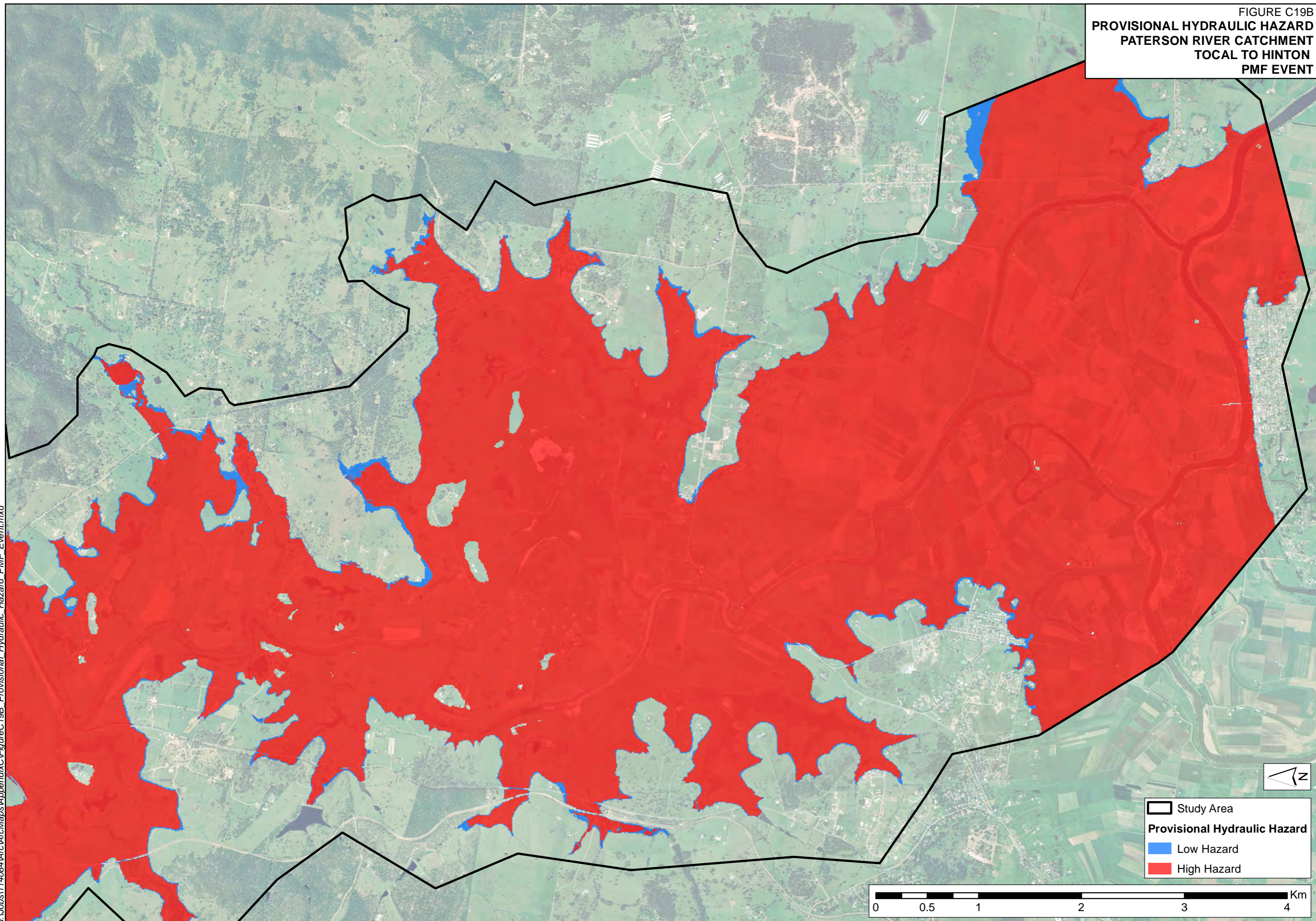




FIGURE C19B  
PROVISIONAL HYDRAULIC HAZARD  
PATERSON RIVER CATCHMENT  
TOTAL TO HINTON  
PMF EVENT



J:\Jobs\114084\Arc\Maps\Appendix\FigureC19B\_Provisional\_Hydraulic\_Hazard\_PMF\_Event.mxd

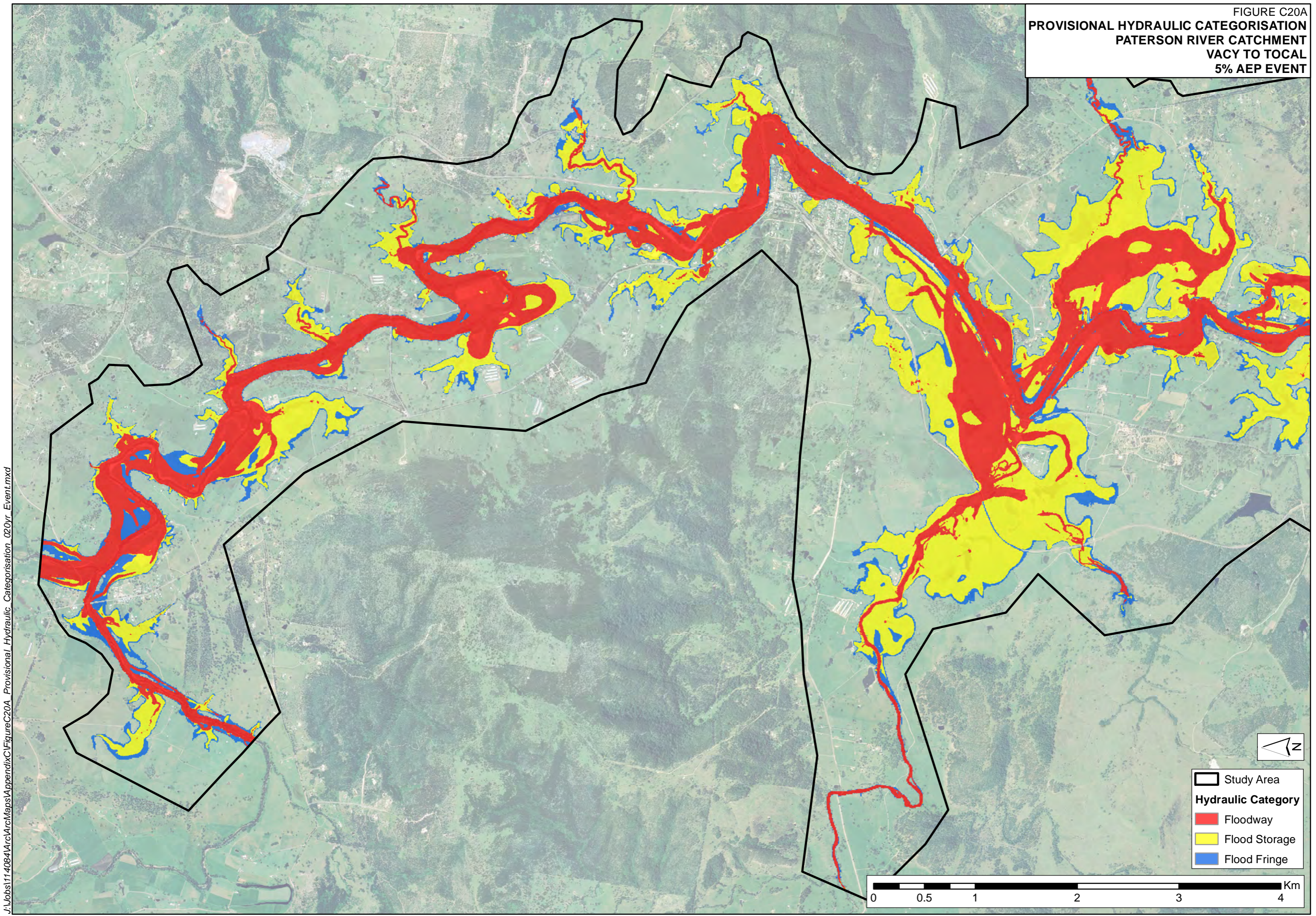
0 0.5 1 2 3 4 Km

Study Area  
Provisional Hydraulic Hazard  
Low Hazard  
High Hazard





FIGURE C20A  
PROVISIONAL HYDRAULIC CATEGORISATION  
PATERSON RIVER CATCHMENT  
VACY TO TOCAL  
5% AEP EVENT



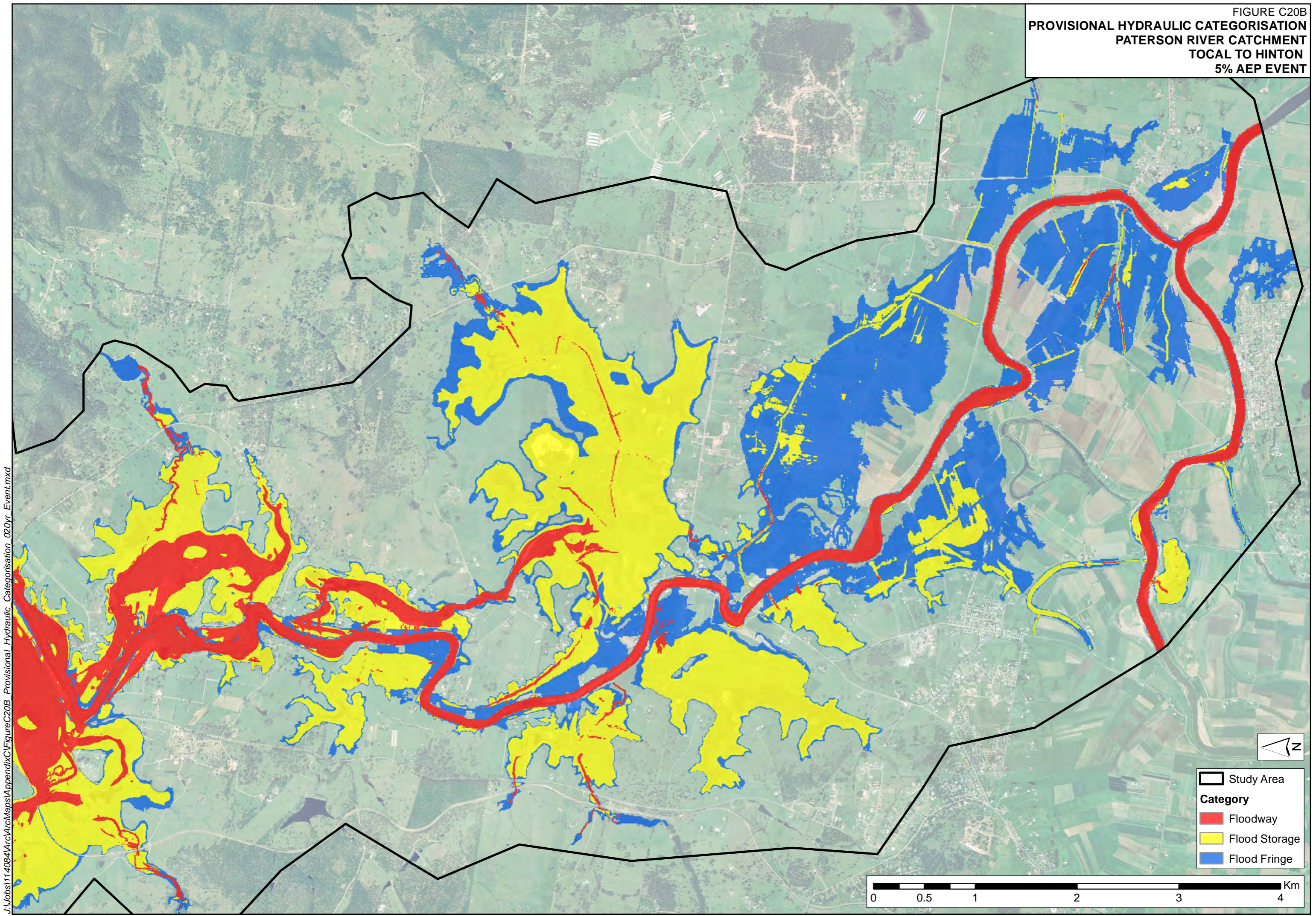
J:\Jobs\114084\ArcMaps\AppendixC\FigureC20A\_Provisional\_Hydraulic\_Categorisation\_020Yr\_Event.mxd

- Study Area
- Hydraulic Category**
- Floodway
- Flood Storage
- Flood Fringe

0 0.5 1 2 3 4 Km



FIGURE C20B  
PROVISIONAL HYDRAULIC CATEGORISATION  
PATERSON RIVER CATCHMENT  
TOTAL TO HINTON  
5% AEP EVENT



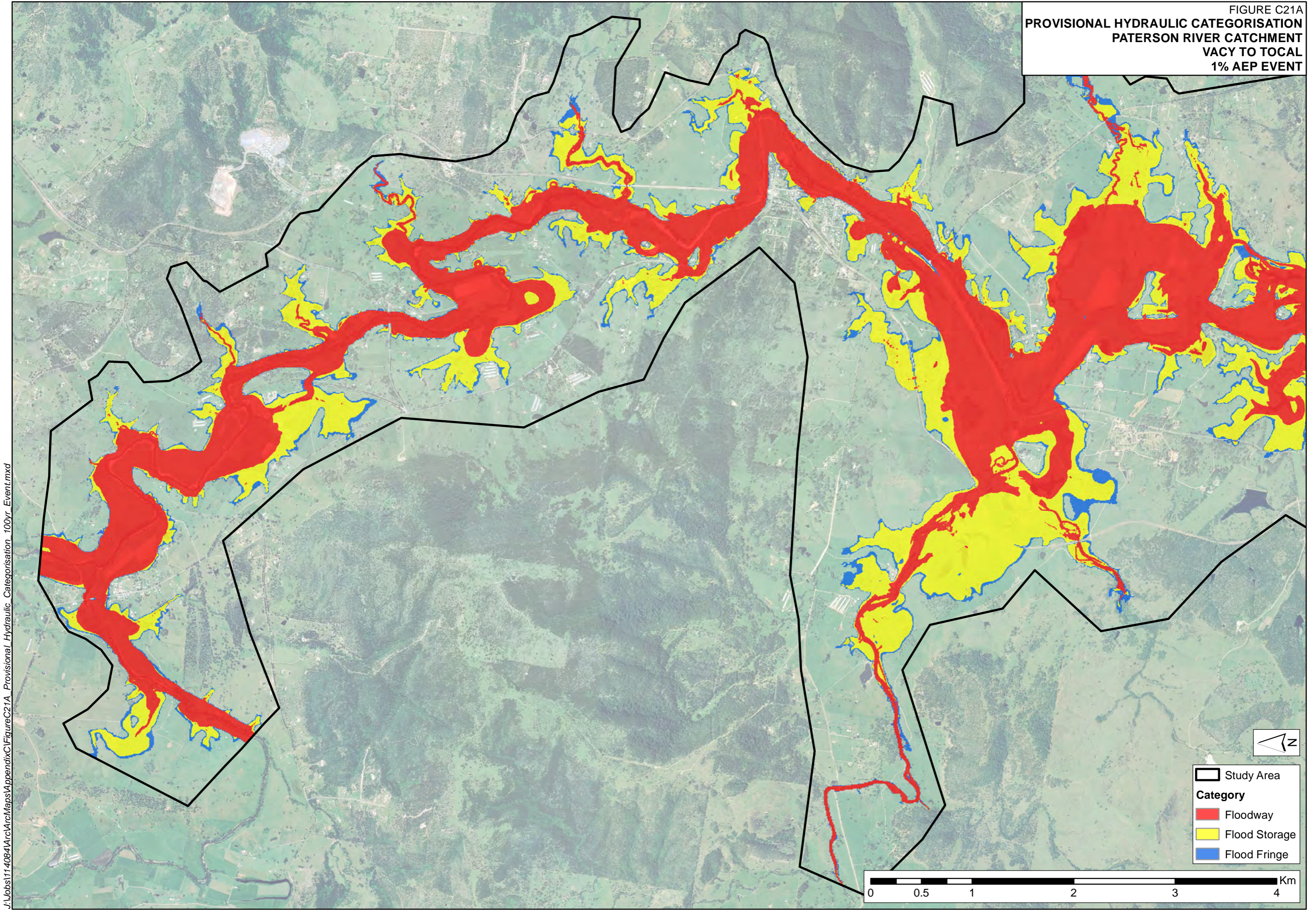
J:\Jobs\11\_40641\Arc\Maps\AppendixC\FigureC20B\_Provisional\_Hydraulic\_Categorisation\_020Yr\_Event.mxd

- Study Area
- Category**
- Floodway
- Flood Storage
- Flood Fringe

0 0.5 1 2 3 4 Km



FIGURE C21A  
PROVISIONAL HYDRAULIC CATEGORISATION  
PATERSON RIVER CATCHMENT  
VACY TO TOLCAL  
1% AEP EVENT



J:\Jobs\114084\ArcMaps\AppendixC\FigureC21A\_Provisional\_Hydraulic\_Categorisation\_100Yr\_Event.mxd

- Study Area
- Category
  - Floodway
  - Flood Storage
  - Flood Fringe



FIGURE C21B  
PROVISIONAL HYDRAULIC CATEGORISATION  
PATERSON RIVER CATCHMENT  
TOTAL TO HINTON  
1% AEP EVENT

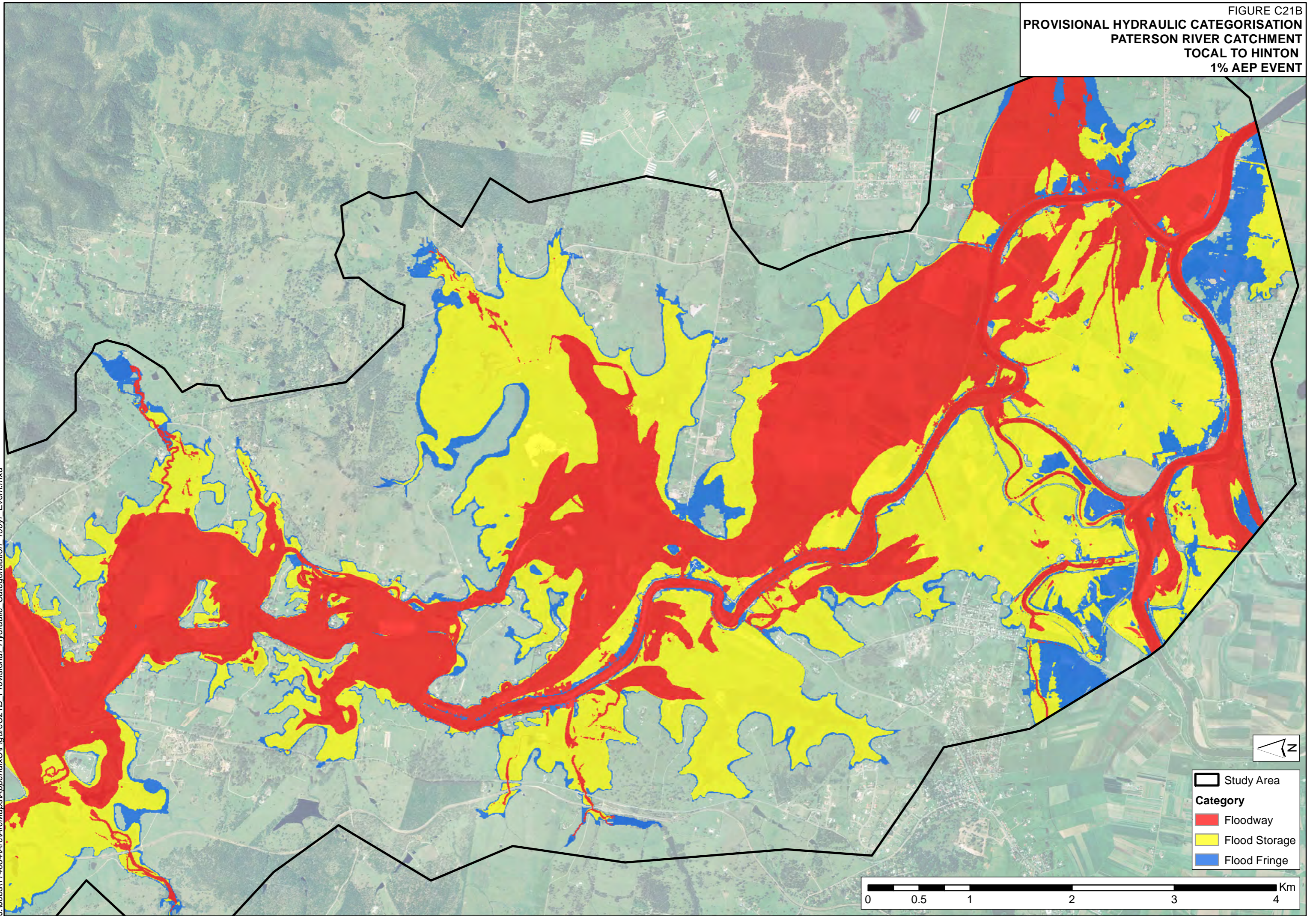
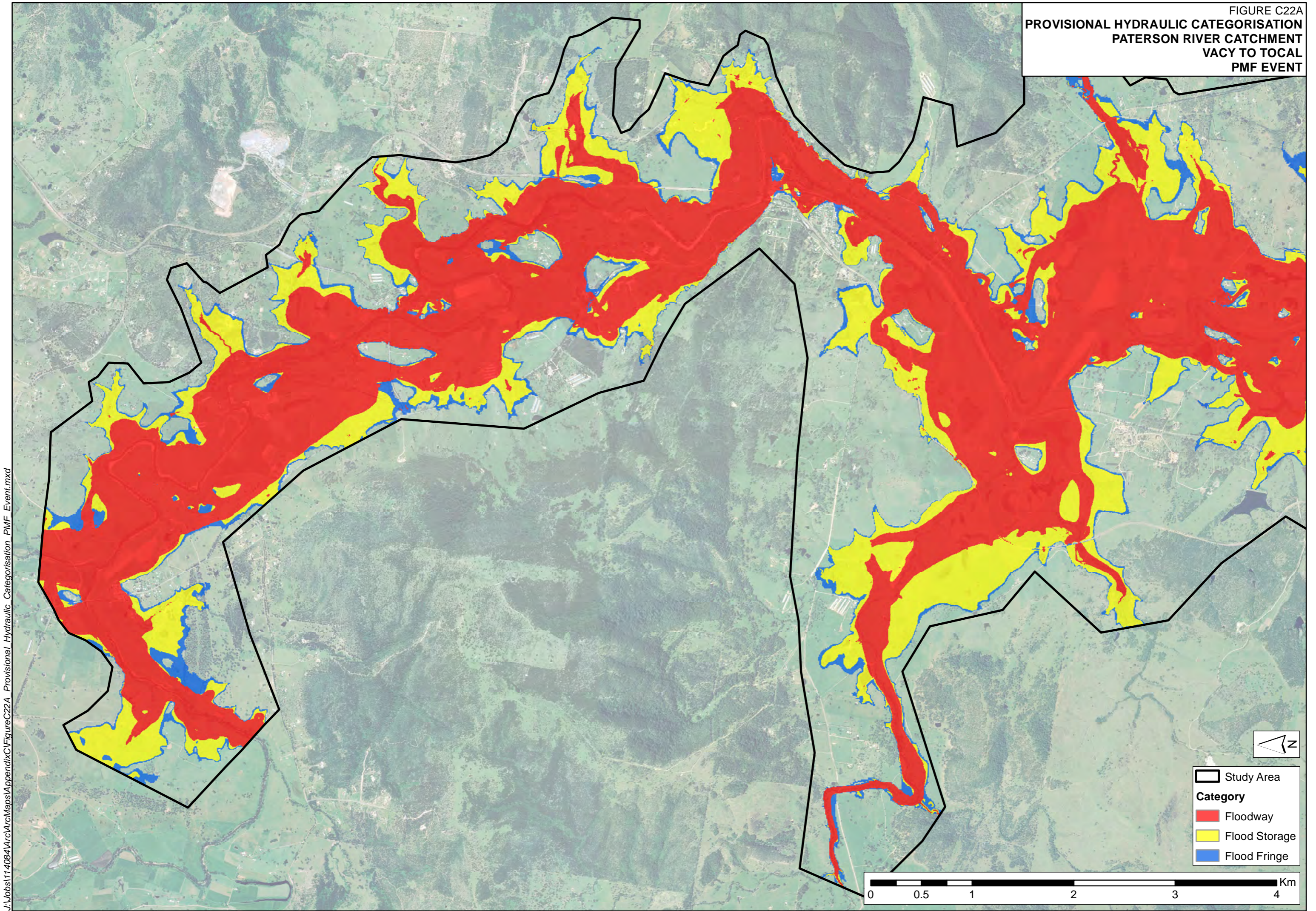




FIGURE C22A  
PROVISIONAL HYDRAULIC CATEGORISATION  
PATERSON RIVER CATCHMENT  
VACY TO TOCAL  
PMF EVENT

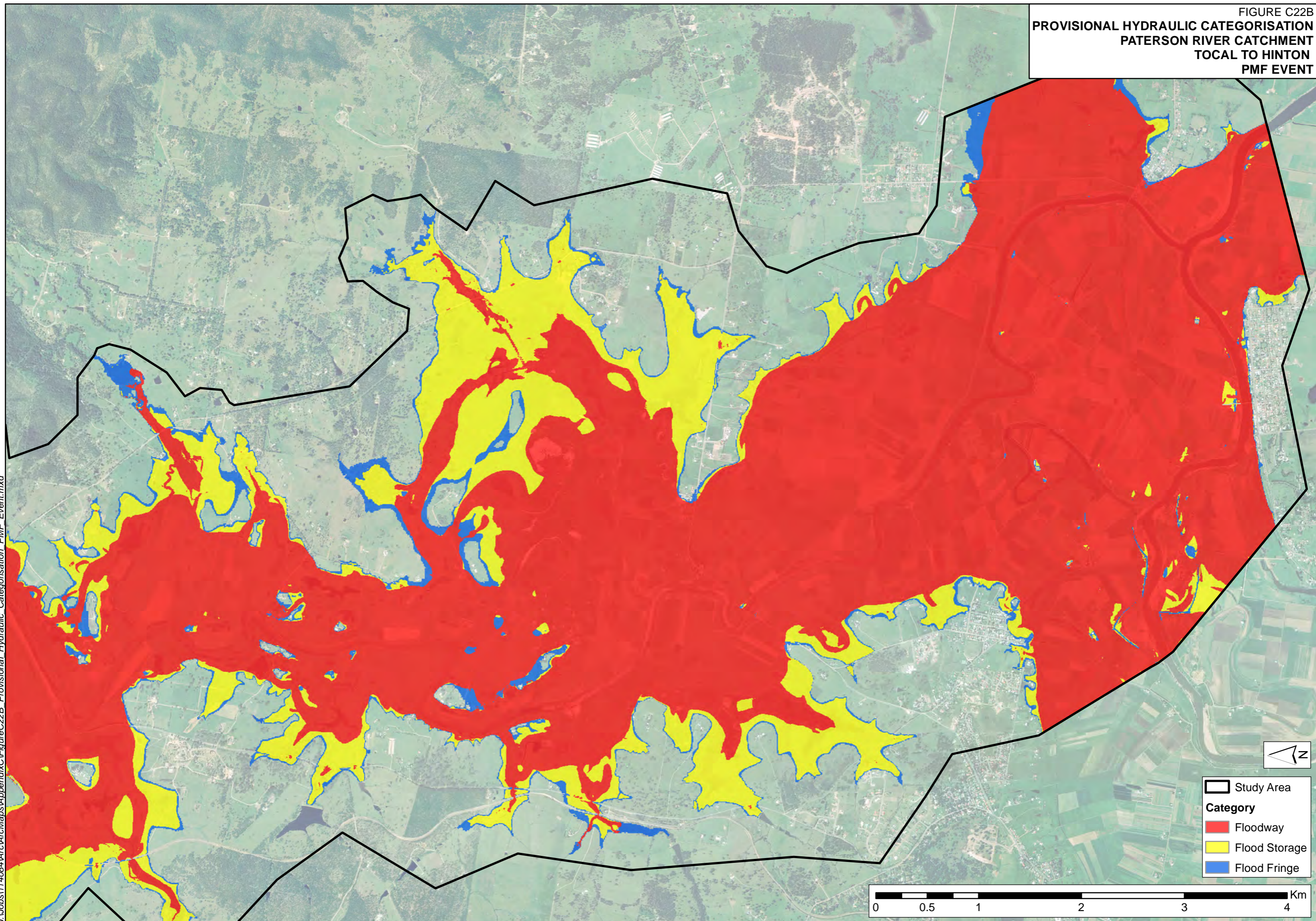


- Study Area
- Category
  - Floodway
  - Flood Storage
  - Flood Fringe

0 0.5 1 2 3 4 Km



FIGURE C22B  
PROVISIONAL HYDRAULIC CATEGORISATION  
PATERSON RIVER CATCHMENT  
TOLCAL TO HINTON  
PMF EVENT



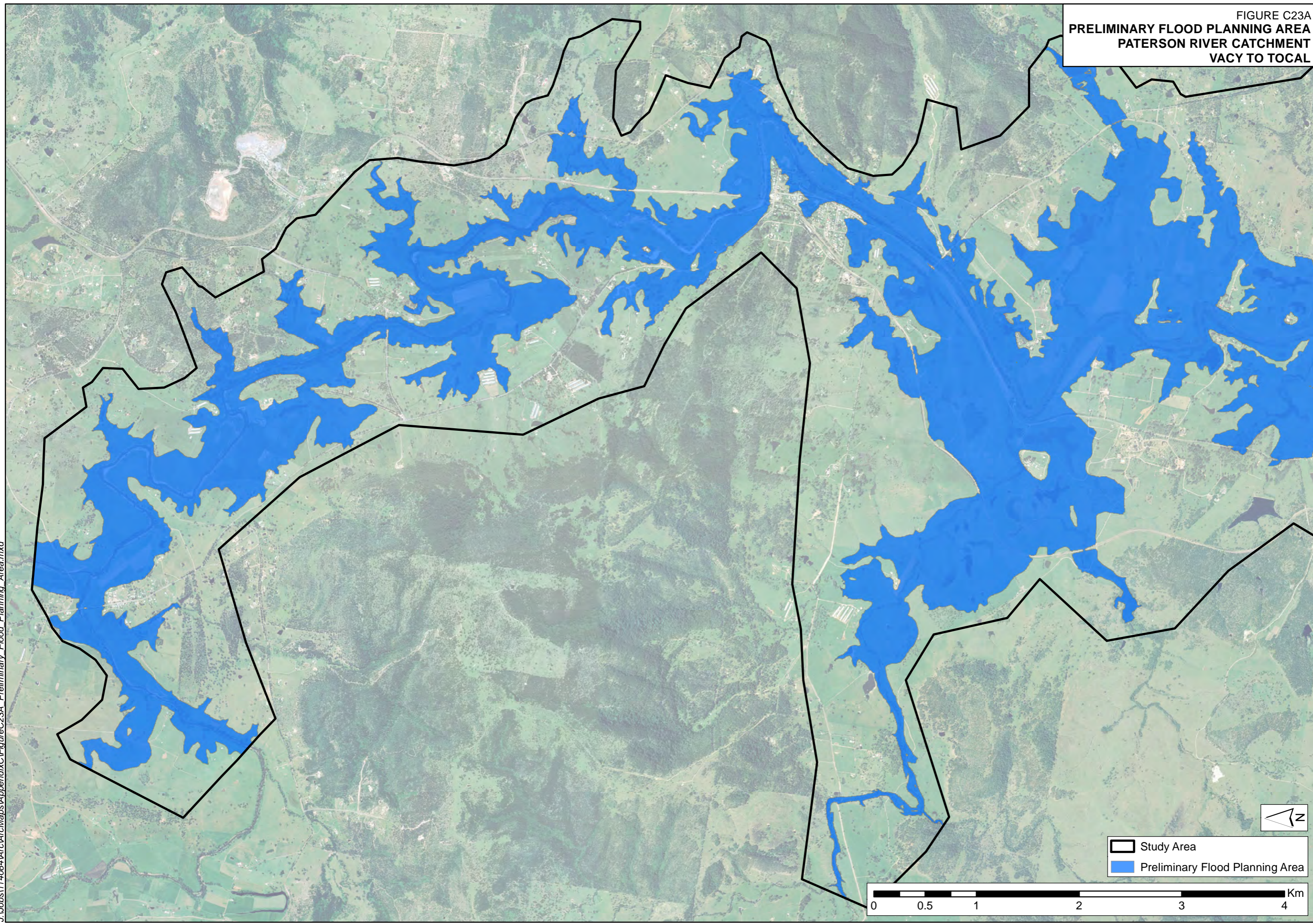
J:\Jobs\1140641\ArcMaps\Appendix\FigureC22B\_Provisional\_Hydraulic\_Categorisation\_PMF\_Event.mxd

- Study Area
- Category**
- Floodway
- Flood Storage
- Flood Fringe

0 0.5 1 2 3 4 Km



FIGURE C23A  
PRELIMINARY FLOOD PLANNING AREA  
PATERSON RIVER CATCHMENT  
VACY TO TOCAL



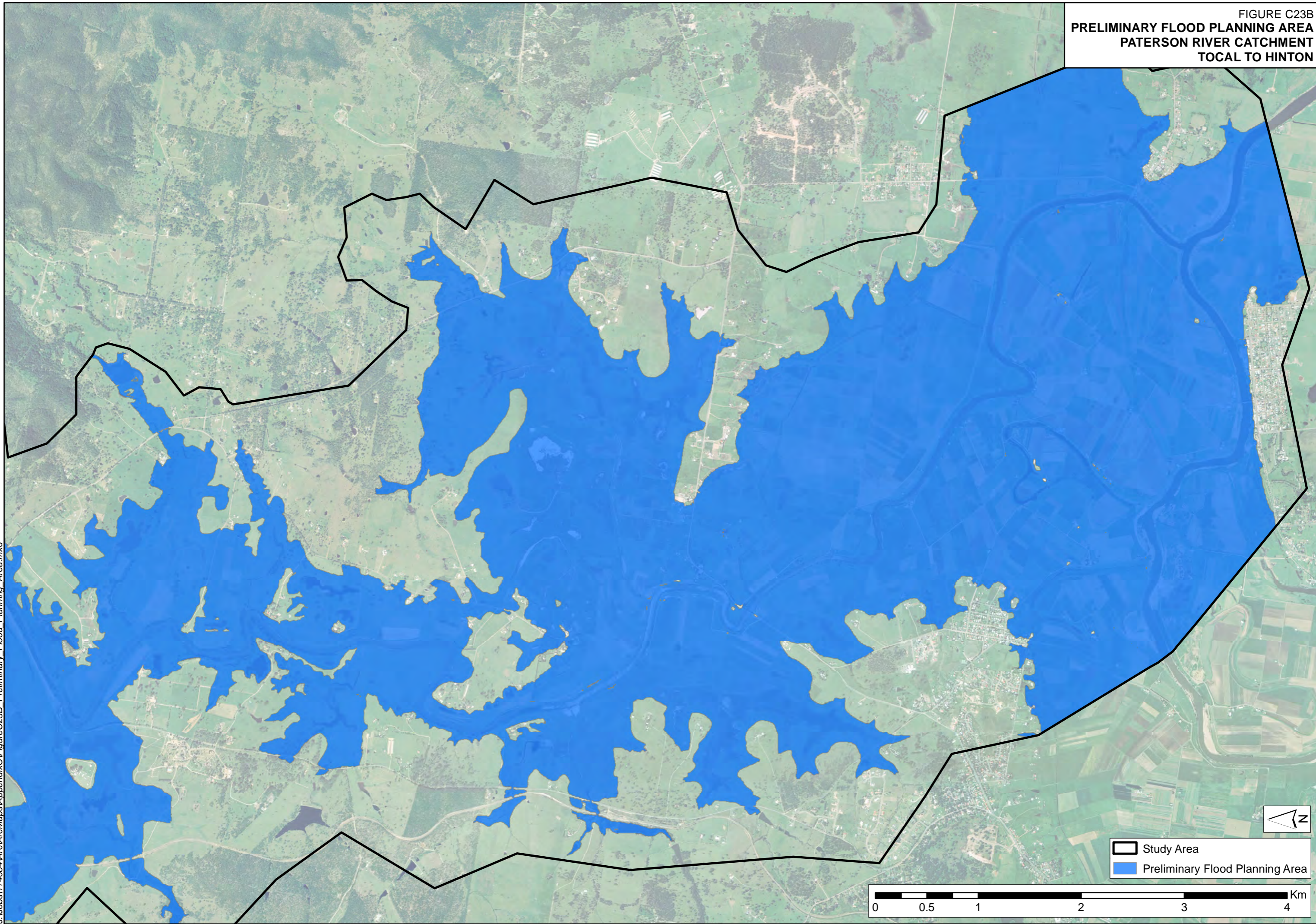
J:\Jobs\11\_4064\Arc\Maps\Appendix\FigureC23A\_Preliminary\_Flood\_Planning\_Area.mxd

Study Area  
Preliminary Flood Planning Area

0 0.5 1 2 3 4 Km



FIGURE C23B  
PRELIMINARY FLOOD PLANNING AREA  
PATERSON RIVER CATCHMENT  
TOLCAL TO HINTON



J:\Jobs\114064\Arc\Maps\Appendix\FigureC23B\_Preliminary\_Flood\_Planning\_Area.mxd



FIGURE C24  
PATERSON RIVER LEVEL PROFILE  
5%, 1% AEP EVENT AND PMF

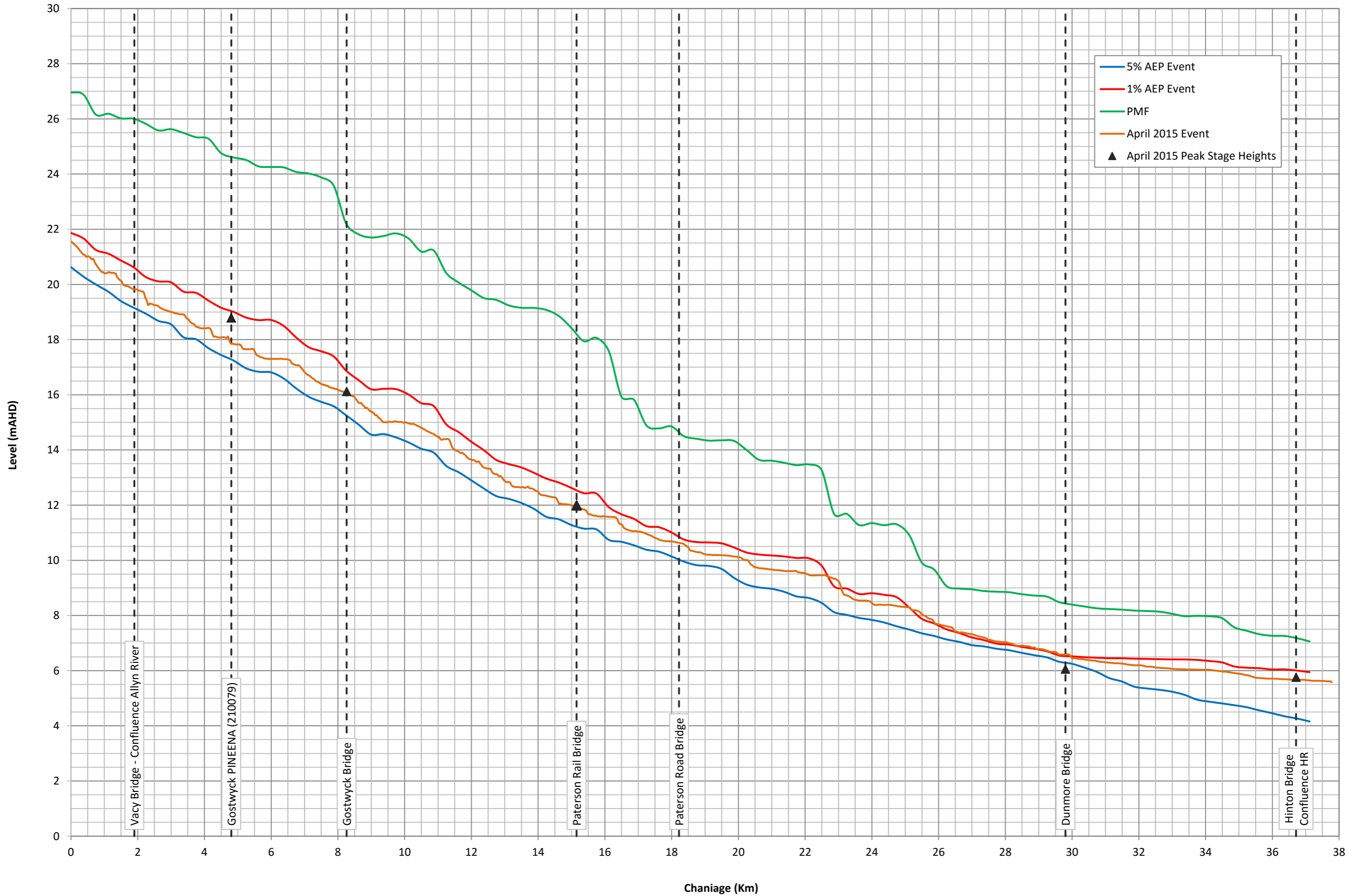
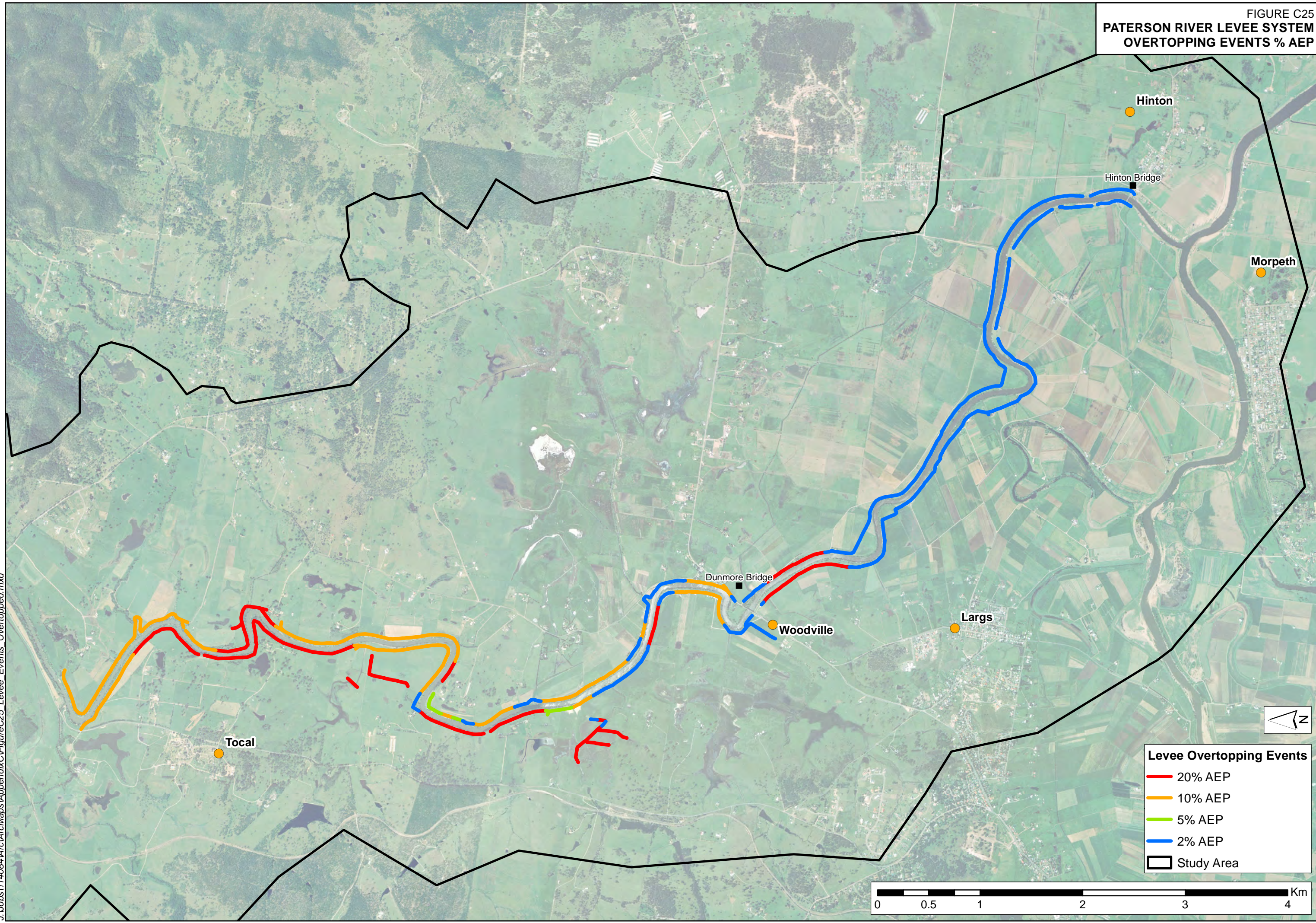




FIGURE C25  
PATERSON RIVER LEVEL SYSTEM  
OVERTOPPING EVENTS % AEP



J:\Jobs\11408414\Arc\Maps\AppendixC\FigureC25\_Levee\_Events\_Overtopped.mxd

**Levee Overtopping Events**

- 20% AEP
- 10% AEP
- 5% AEP
- 2% AEP
- Study Area

0 0.5 1 2 3 4 Km