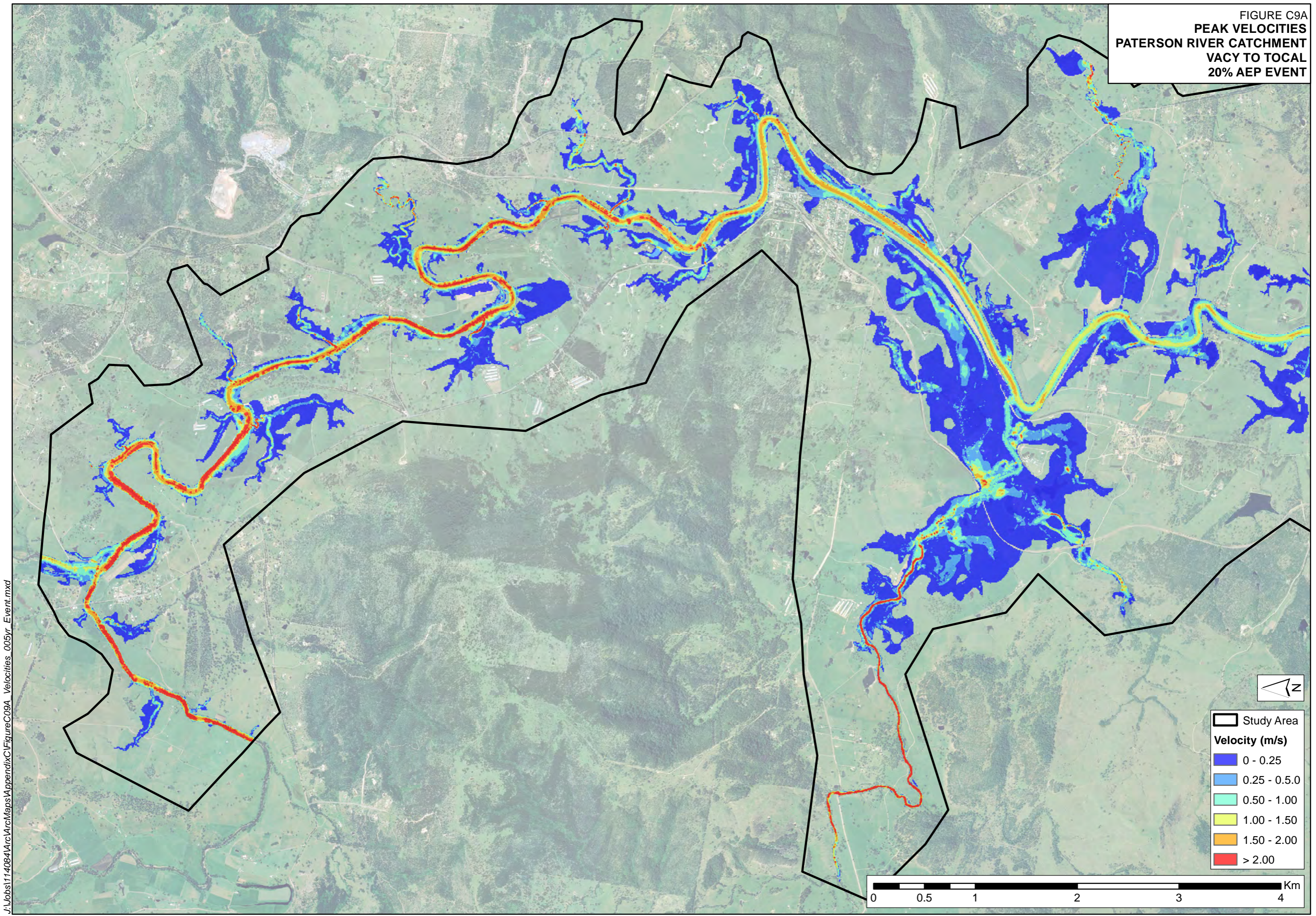


FIGURE C9A
PEAK VELOCITIES
PATERSON RIVER CATCHMENT
VACY TO TICAL
20% AEP EVENT



J:\Jobs\114084\Arc\Maps\Appendix\FigureC09A_Velocities_005yr_Event.mxd

- Study Area
- Velocity (m/s)**
- 0 - 0.25
- 0.25 - 0.5.0
- 0.50 - 1.00
- 1.00 - 1.50
- 1.50 - 2.00
- > 2.00

0 0.5 1 2 3 4 Km

FIGURE C9B
PEAK VELOCITIES
PATERSON RIVER CATCHMENT
TOTAL TO HINTON
20% AEP EVENT

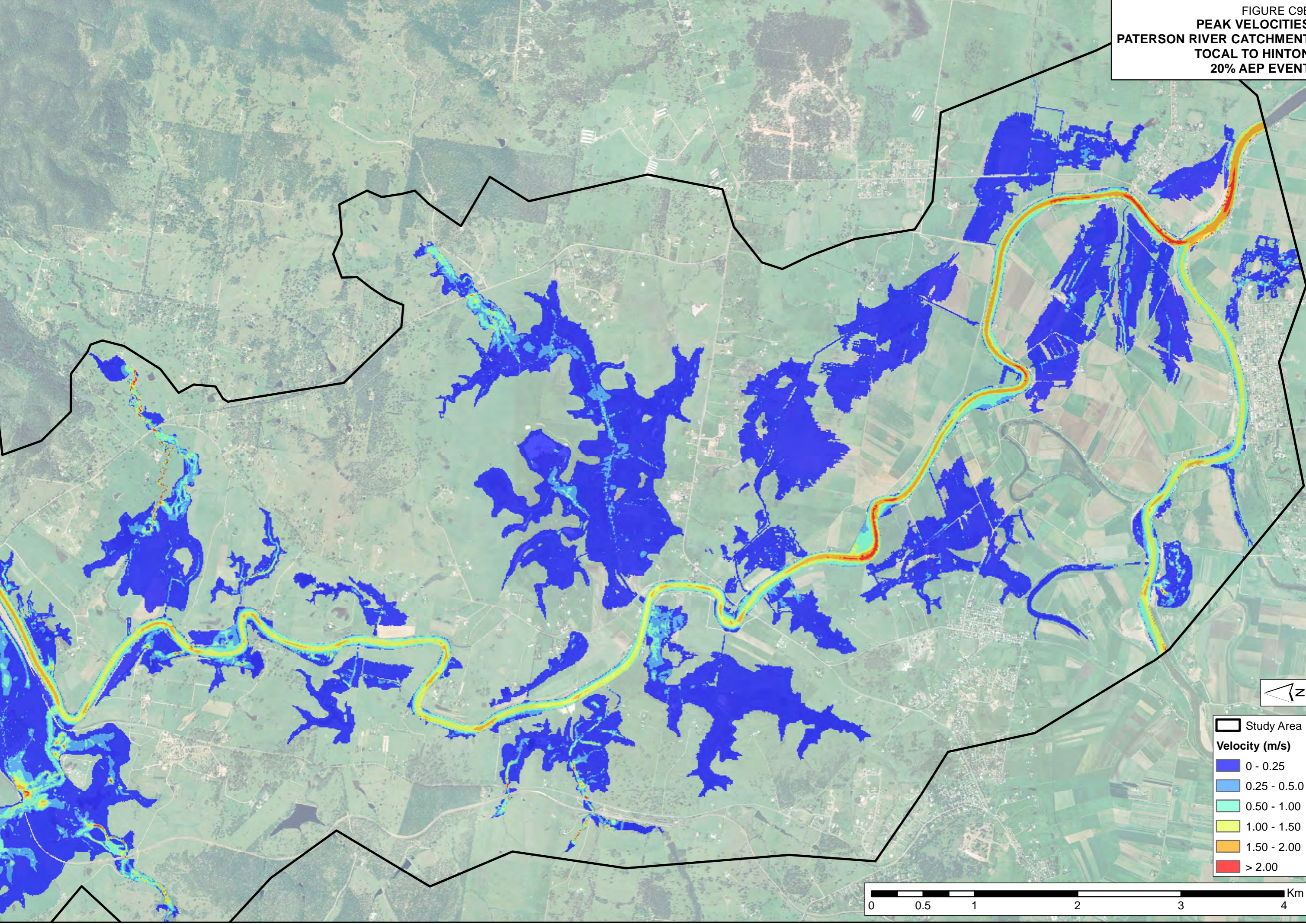
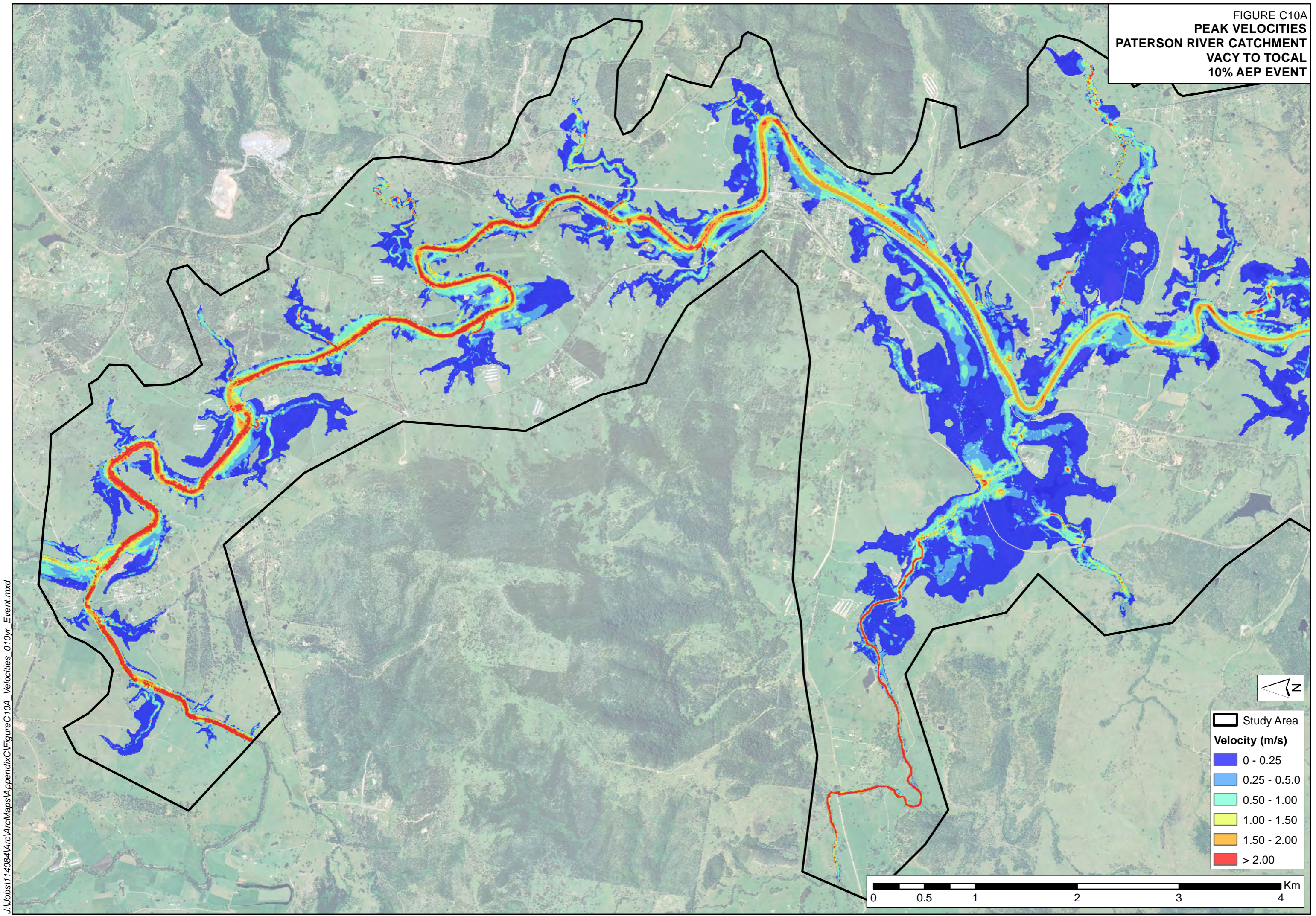


FIGURE C10A
PEAK VELOCITIES
PATERSON RIVER CATCHMENT
VACY TO TOLCAL
10% AEP EVENT



J:\Jobs\114084\Arc\Maps\AppendixC\FigureC10A_Velocities_010yr_Event.mxd

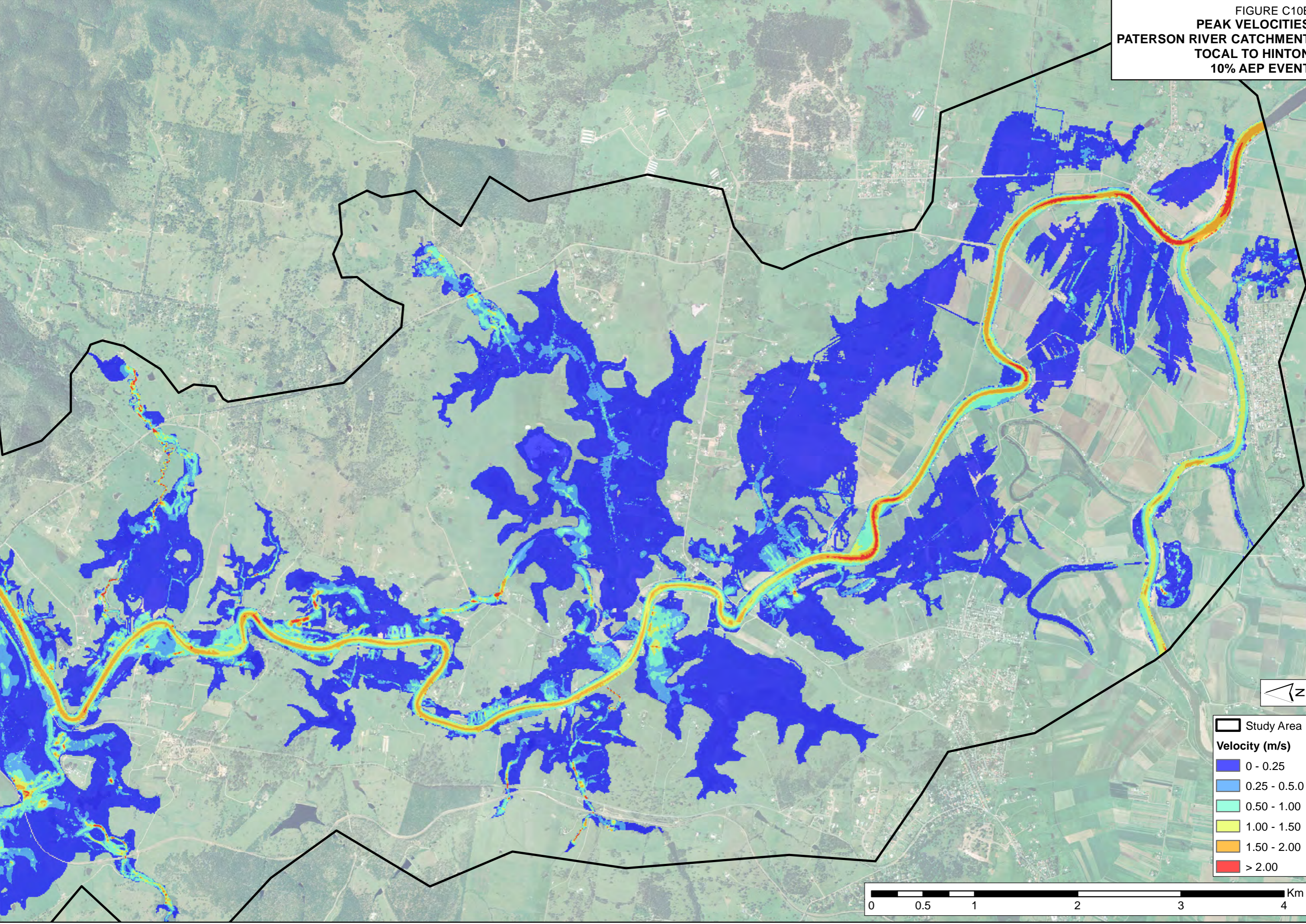
Study Area

Velocity (m/s)

- 0 - 0.25
- 0.25 - 0.5.0
- 0.50 - 1.00
- 1.00 - 1.50
- 1.50 - 2.00
- > 2.00

0 0.5 1 2 3 4 Km

FIGURE C10B
PEAK VELOCITIES
PATERSON RIVER CATCHMENT
TOTAL TO HINTON
10% AEP EVENT



J:\Jobs\114064\Arc\Maps\AppendixC\FigureC10B_Velocities_010yr_Event.mxd

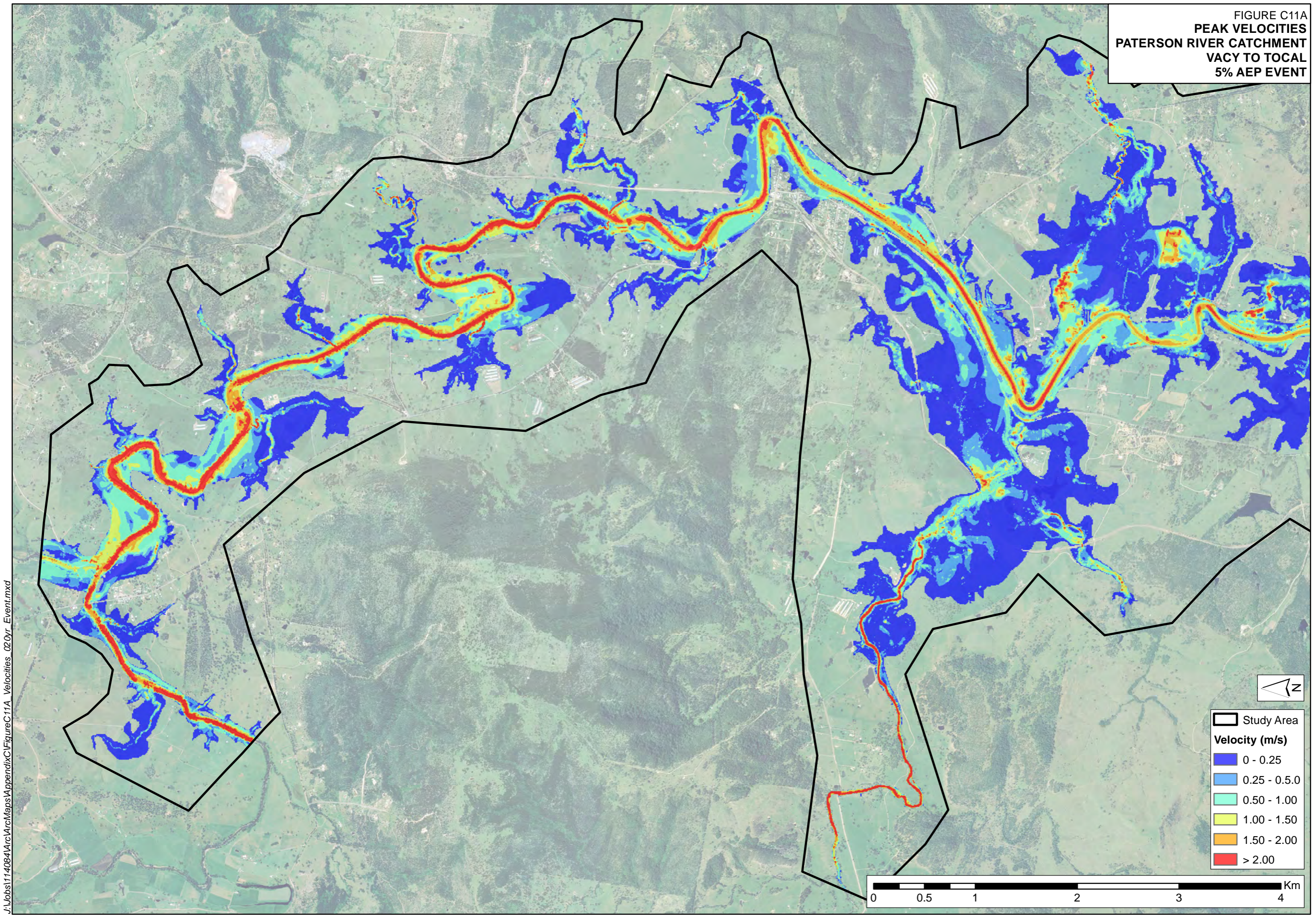
Study Area

Velocity (m/s)

- 0 - 0.25
- 0.25 - 0.5.0
- 0.50 - 1.00
- 1.00 - 1.50
- 1.50 - 2.00
- > 2.00

0 0.5 1 2 3 4 Km

FIGURE C11A
PEAK VELOCITIES
PATERSON RIVER CATCHMENT
VACY TO TOLCAL
5% AEP EVENT



J:\Jobs\114084\Arc\Maps\AppendixC\FigureC11A_Velocities_020yr_Event.mxd

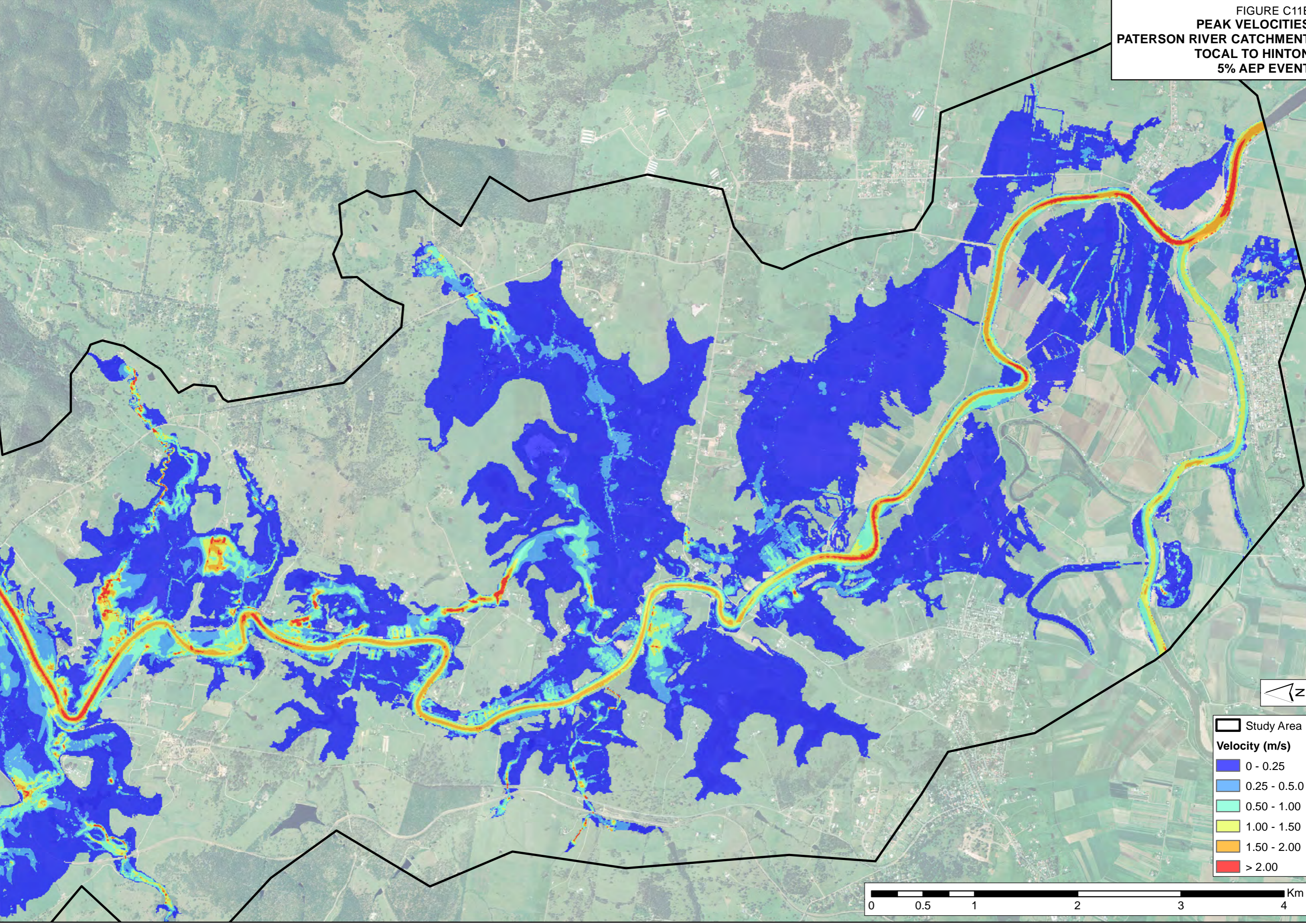
Study Area

Velocity (m/s)

- 0 - 0.25
- 0.25 - 0.5.0
- 0.50 - 1.00
- 1.00 - 1.50
- 1.50 - 2.00
- > 2.00

0 0.5 1 2 3 4 Km

FIGURE C11B
PEAK VELOCITIES
PATERSON RIVER CATCHMENT
TOTAL TO HINTON
5% AEP EVENT



Study Area

Velocity (m/s)

- 0 - 0.25
- 0.25 - 0.5.0
- 0.50 - 1.00
- 1.00 - 1.50
- 1.50 - 2.00
- > 2.00



J:\Jobs\114064\Arc\Maps\Appendix\FigureC11B_Velocities_02.0yr_Event.mxd

FIGURE C12A
PEAK VELOCITIES
PATERSON RIVER CATCHMENT
VACY TO TICAL
2% AEP EVENT

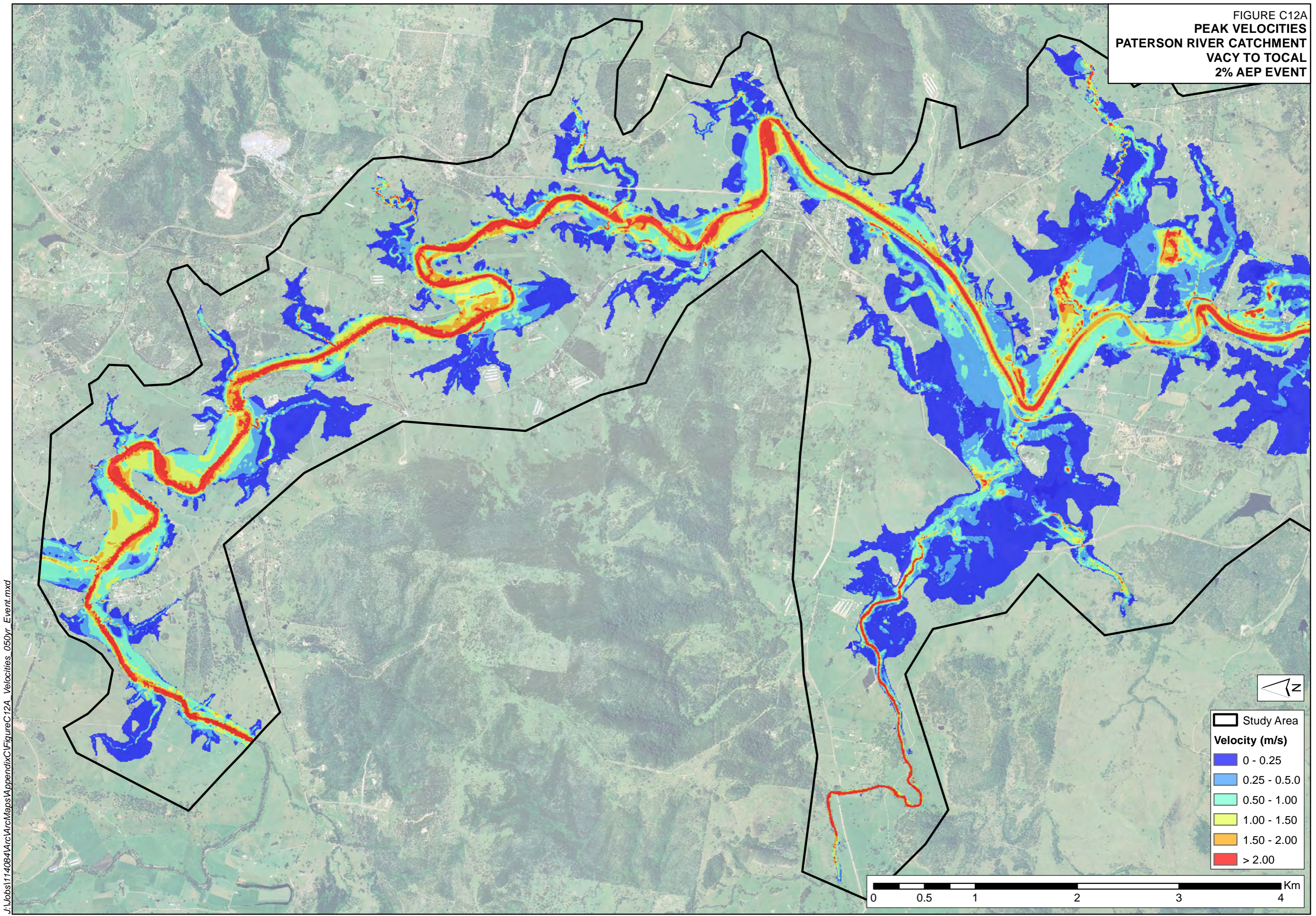
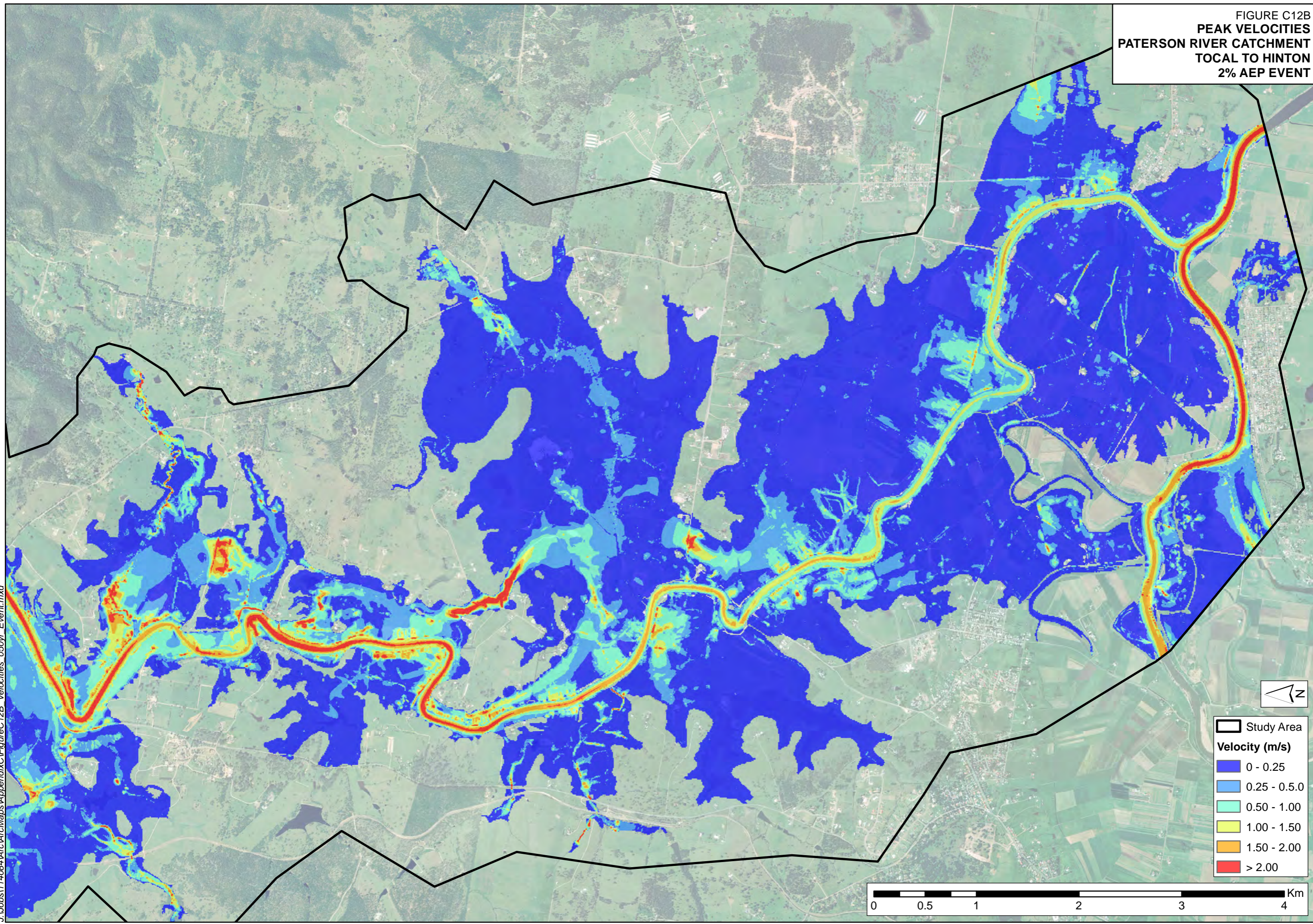


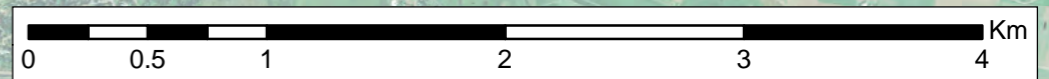
FIGURE C12B
PEAK VELOCITIES
PATERSON RIVER CATCHMENT
TOTAL TO HINTON
2% AEP EVENT



Study Area

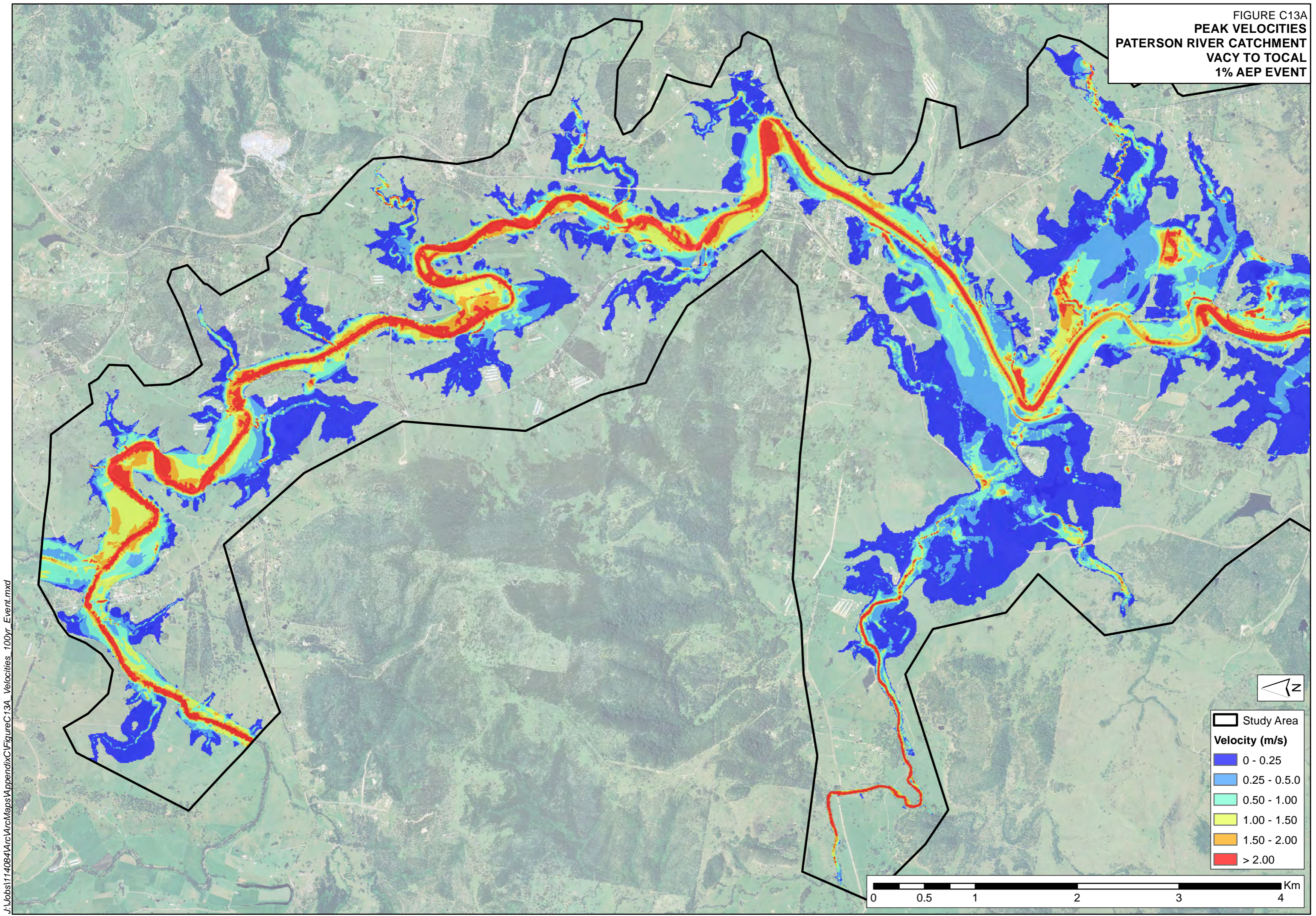
Velocity (m/s)

- 0 - 0.25
- 0.25 - 0.5.0
- 0.50 - 1.00
- 1.00 - 1.50
- 1.50 - 2.00
- > 2.00



J:\Jobs\114064\Arc\Maps\Appendix\FigureC12B_Velocities_050yr_Event.mxd

FIGURE C13A
PEAK VELOCITIES
PATERSON RIVER CATCHMENT
VACY TO TICAL
1% AEP EVENT



J:\Jobs\114084\Arc\Maps\AppendixC\FigureC13A_Velocities_100yr_Event.mxd

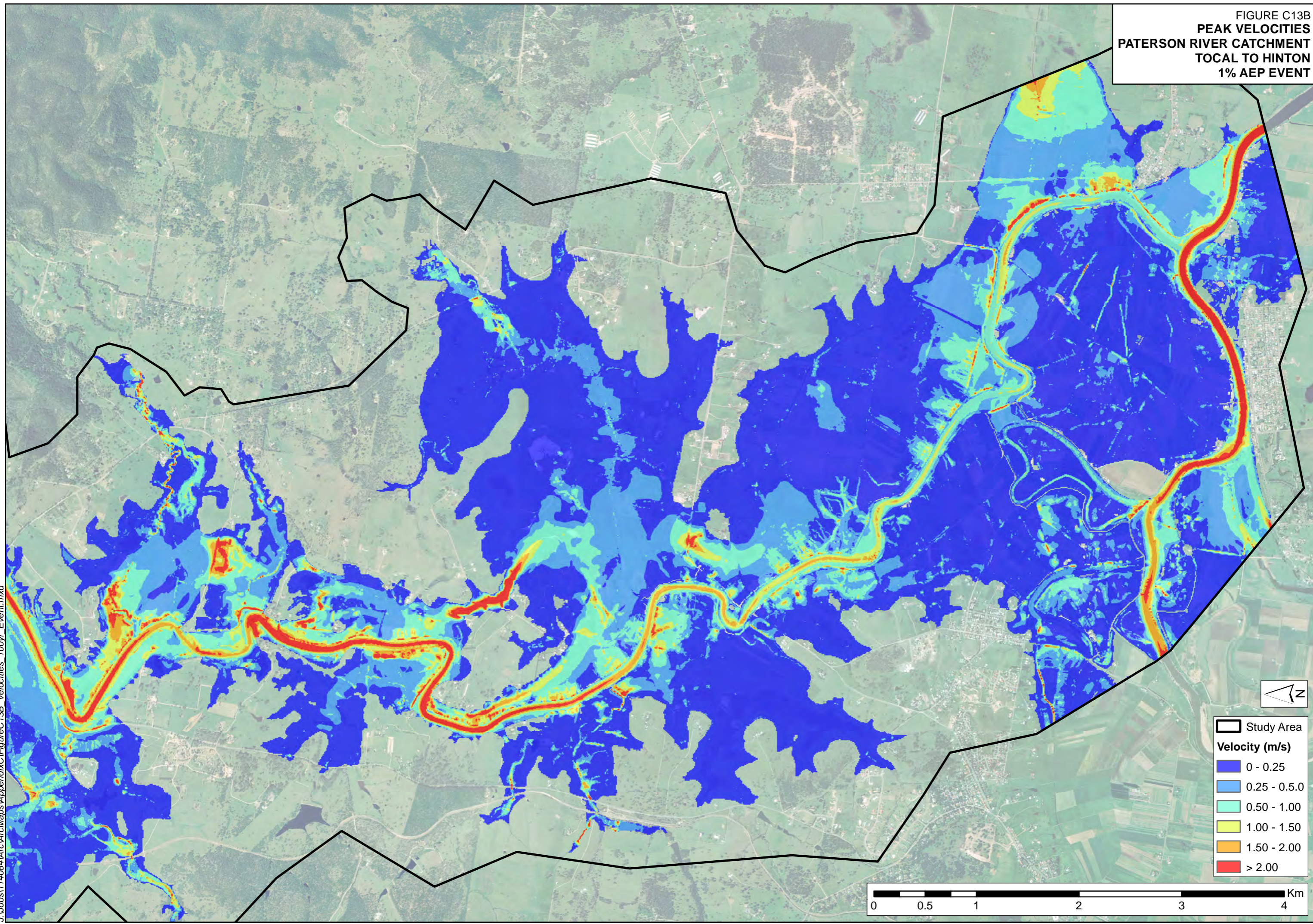
Study Area

Velocity (m/s)

- 0 - 0.25
- 0.25 - 0.5.0
- 0.50 - 1.00
- 1.00 - 1.50
- 1.50 - 2.00
- > 2.00

0 0.5 1 2 3 4 Km

FIGURE C13B
PEAK VELOCITIES
PATERSON RIVER CATCHMENT
TOTAL TO HINTON
1% AEP EVENT



J:\Jobs\114064\Arc\Maps\Appendix\FigureC13B_Velocities_100yr_Event.mxd

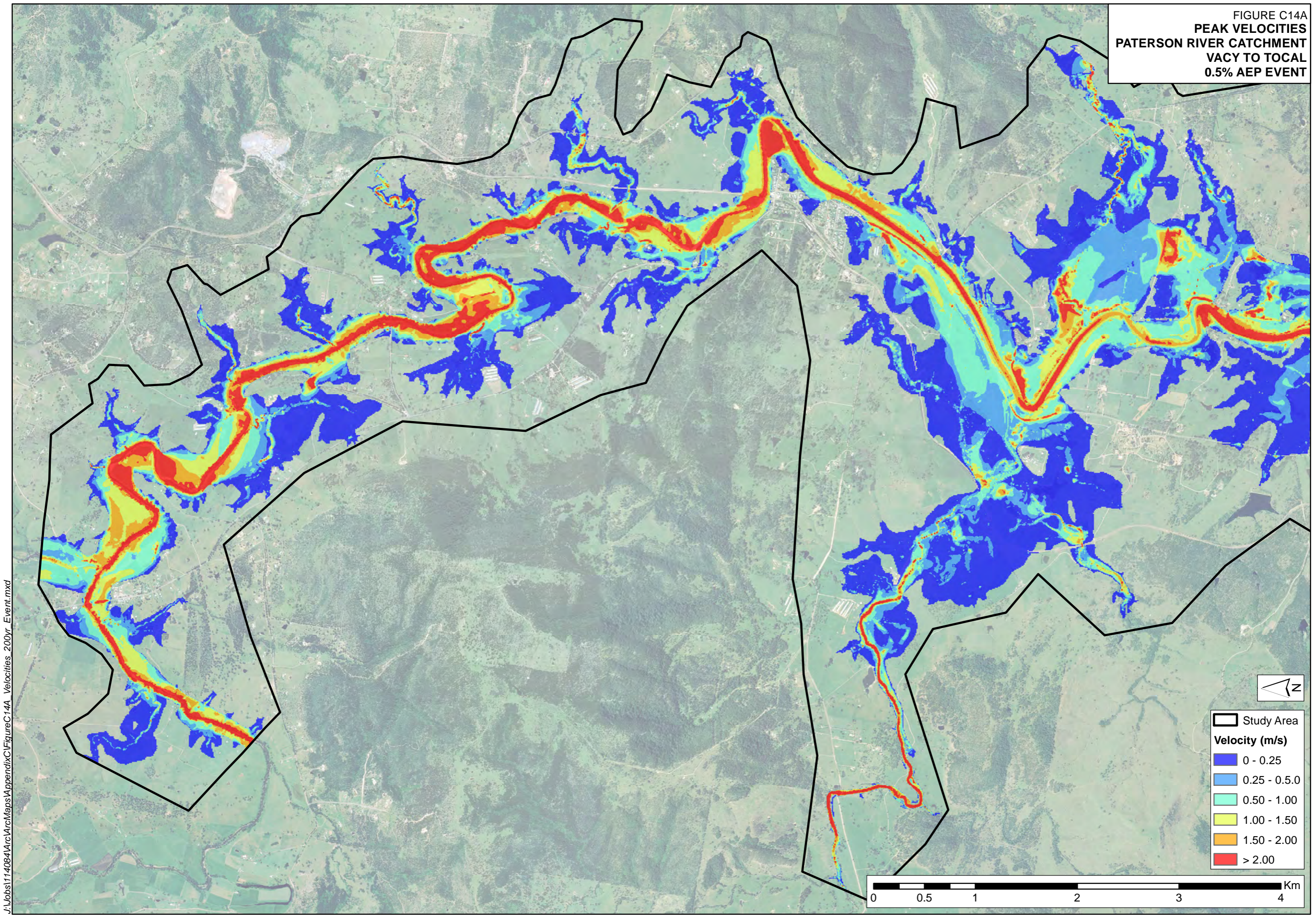
Study Area

Velocity (m/s)

- 0 - 0.25
- 0.25 - 0.5.0
- 0.50 - 1.00
- 1.00 - 1.50
- 1.50 - 2.00
- > 2.00

0 0.5 1 2 3 4 Km

FIGURE C14A
PEAK VELOCITIES
PATERSON RIVER CATCHMENT
VACY TO TICAL
0.5% AEP EVENT

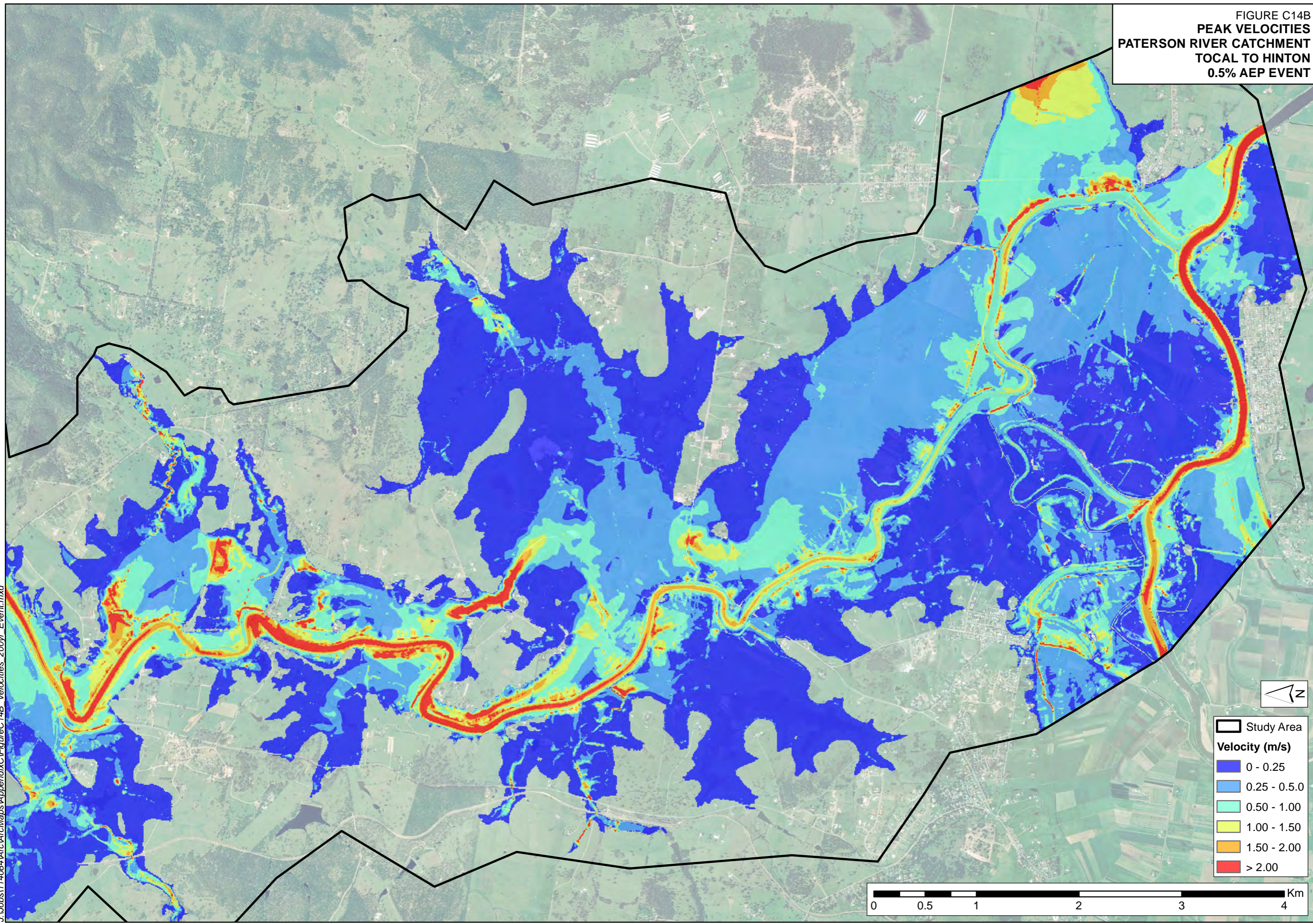


J:\Jobs\114084\Arc\Maps\AppendixC\FigureC14A_Velocities_200yr_Event.mxd

- Study Area
- Velocity (m/s)
 - 0 - 0.25
 - 0.25 - 0.5.0
 - 0.50 - 1.00
 - 1.00 - 1.50
 - 1.50 - 2.00
 - > 2.00

0 0.5 1 2 3 4 Km

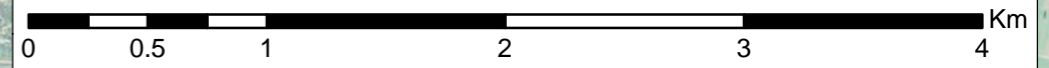
FIGURE C14B
PEAK VELOCITIES
PATERSON RIVER CATCHMENT
TOTAL TO HINTON
0.5% AEP EVENT



Study Area

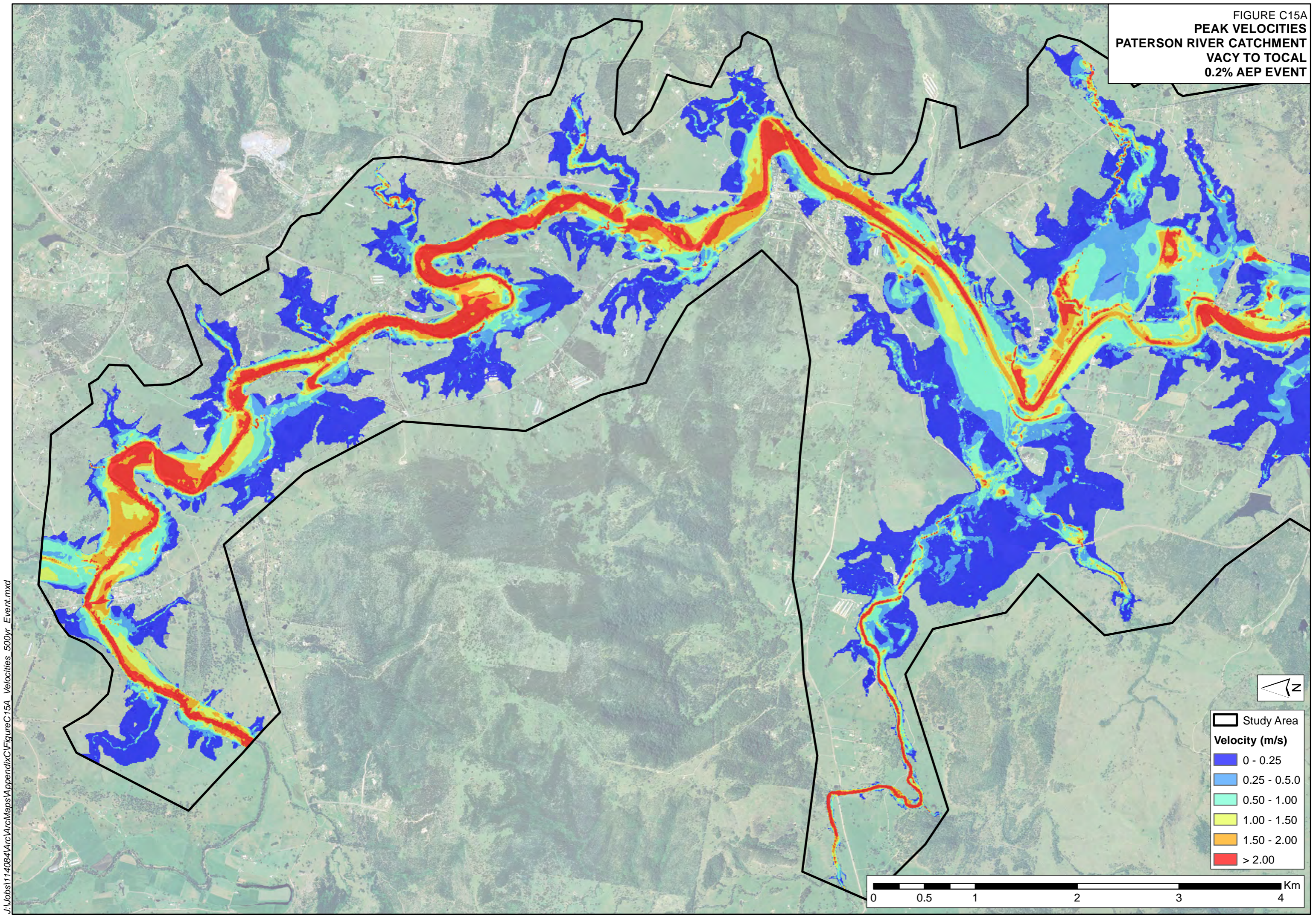
Velocity (m/s)

- 0 - 0.25
- 0.25 - 0.5.0
- 0.50 - 1.00
- 1.00 - 1.50
- 1.50 - 2.00
- > 2.00



J:\Jobs\114064\Arc\Map\Appendix\FigureC14B_Velocities_200yr_Event.mxd

FIGURE C15A
PEAK VELOCITIES
PATERSON RIVER CATCHMENT
VACY TO TICAL
0.2% AEP EVENT



J:\Jobs\114084\Arc\Maps\AppendixC\FigureC15A_Velocities_500yr_Event.mxd

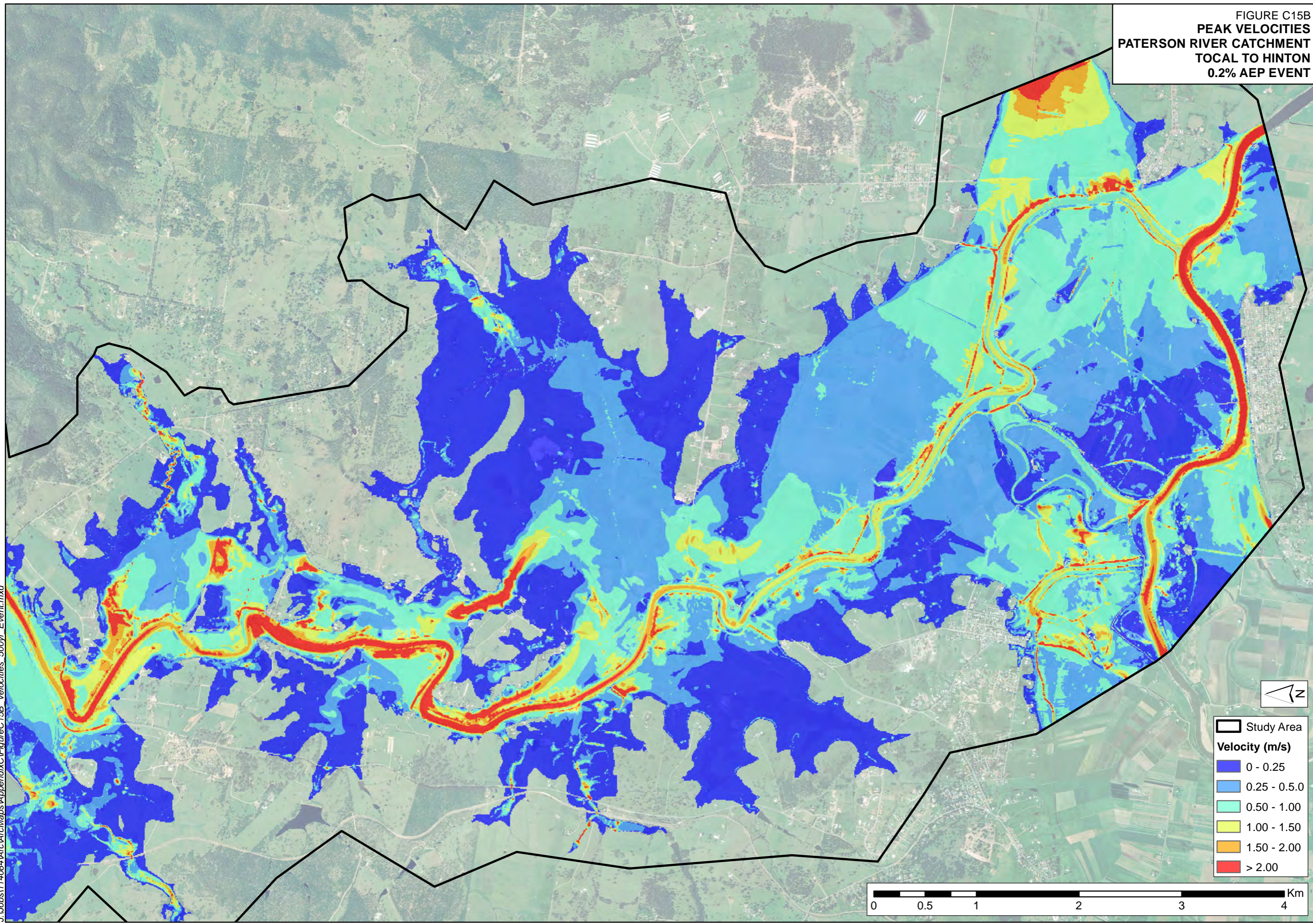
Study Area

Velocity (m/s)

- 0 - 0.25
- 0.25 - 0.5.0
- 0.50 - 1.00
- 1.00 - 1.50
- 1.50 - 2.00
- > 2.00

0 0.5 1 2 3 4 Km

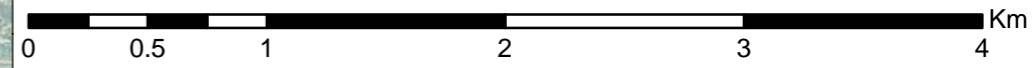
FIGURE C15B
PEAK VELOCITIES
PATERSON RIVER CATCHMENT
TOTAL TO HINTON
0.2% AEP EVENT



Study Area

Velocity (m/s)

- 0 - 0.25
- 0.25 - 0.5.0
- 0.50 - 1.00
- 1.00 - 1.50
- 1.50 - 2.00
- > 2.00



J:\Jobs\114064\Arc\Maps\Appendix\FigureC15B_Velocities_500yr_Event.mxd

FIGURE C16A
PEAK VELOCITIES
PATERSON RIVER CATCHMENT
VACY TO TOCAL
PMF EVENT

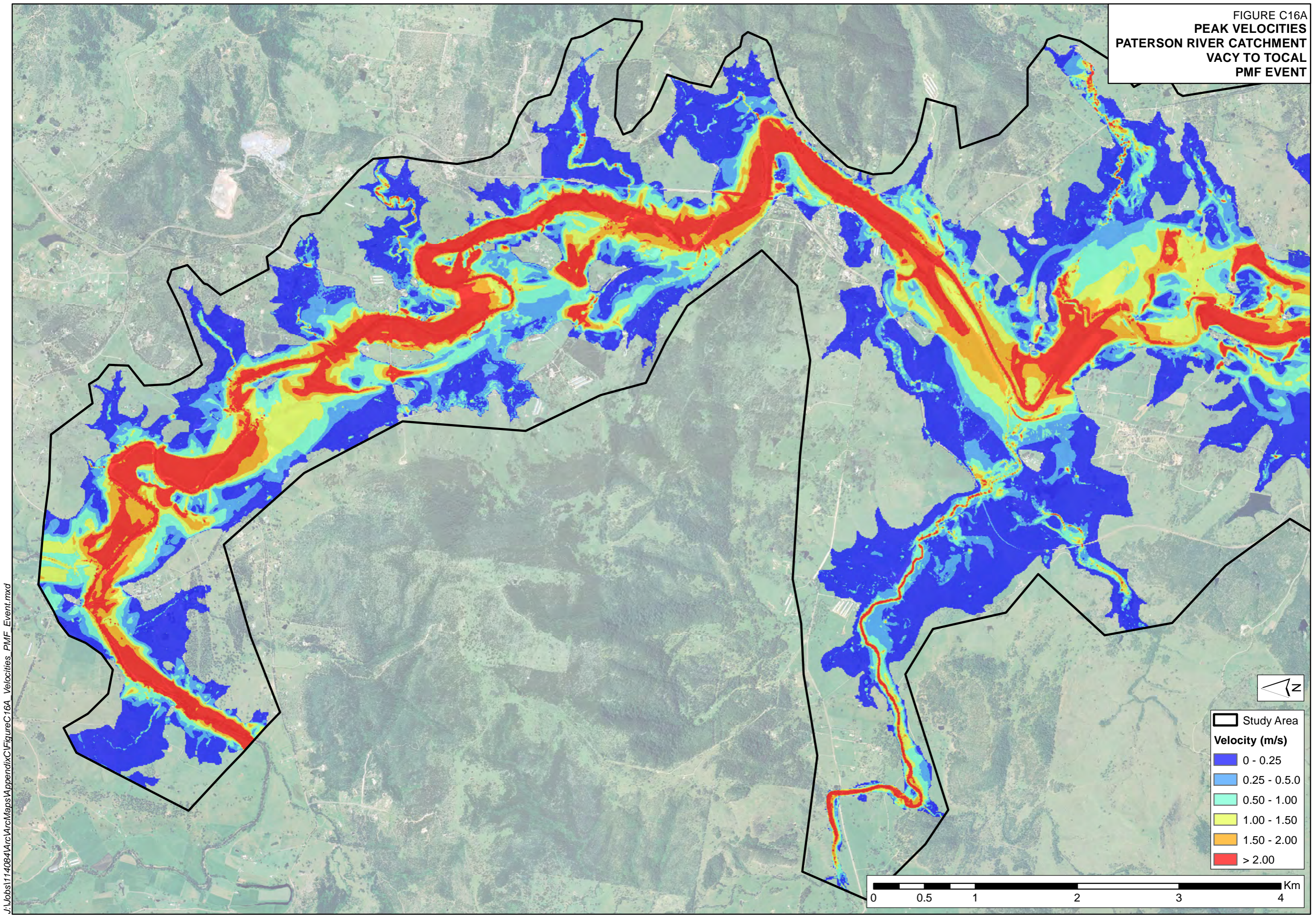
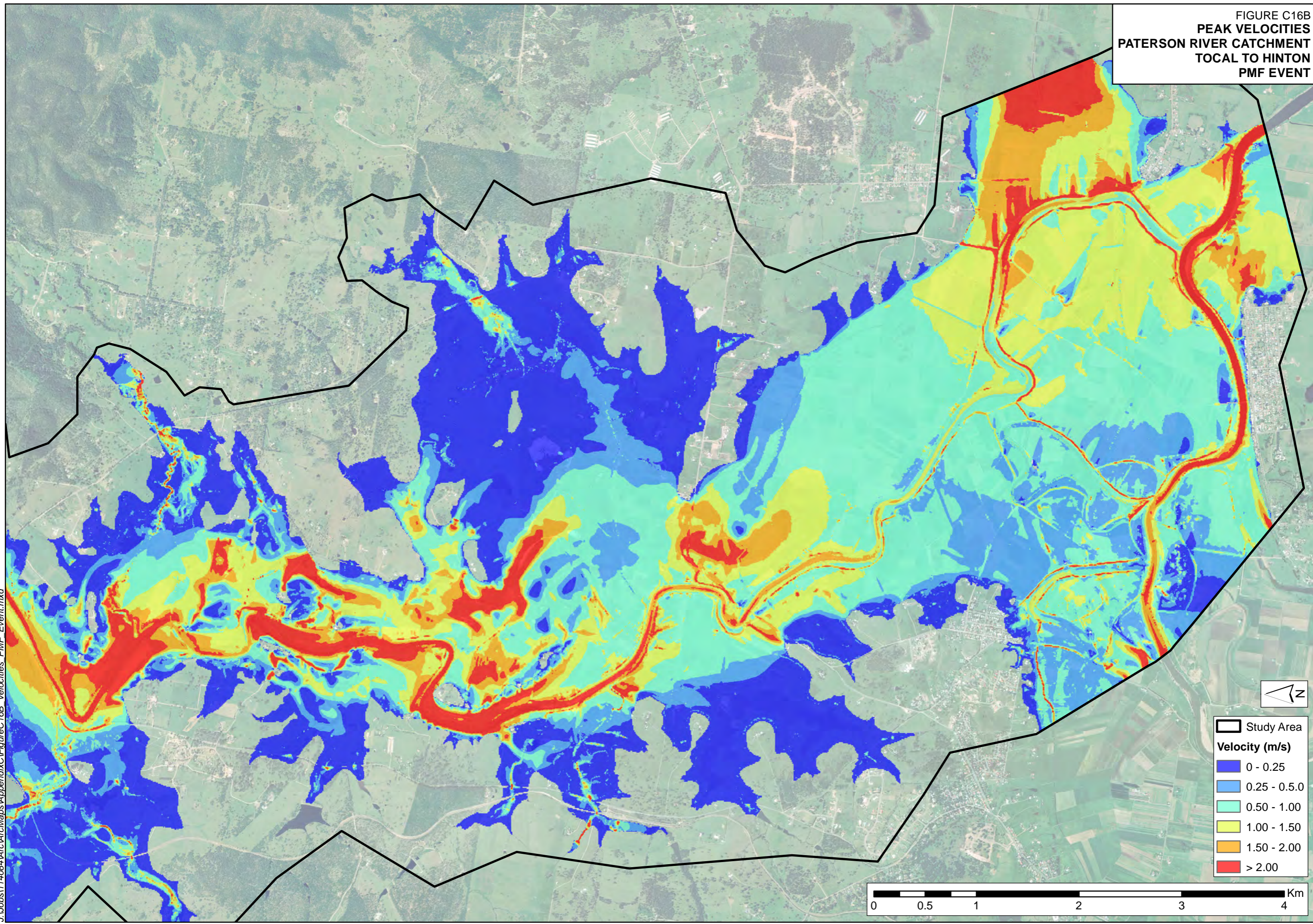


FIGURE C16B
PEAK VELOCITIES
PATERSON RIVER CATCHMENT
TOTAL TO HINTON
PMF EVENT



J:\Jobs\114064\Arc\Maps\Appendix\FigureC16B_Velocities_PMF_Event.mxd

Study Area

Velocity (m/s)

- 0 - 0.25
- 0.25 - 0.5.0
- 0.50 - 1.00
- 1.00 - 1.50
- 1.50 - 2.00
- > 2.00

0 0.5 1 2 3 4 Km