



PATERSON RIVER FLOOD STUDY
VACY TO HINTON
VOLUME 2 – APPENDIX C & D



JUNE 2017



FIGURE C1A
PEAK FLOOD DEPTHS AND LEVELS
PATERSON RIVER CATCHMENT
VACY TO TOLCAL
20% AEP EVENT

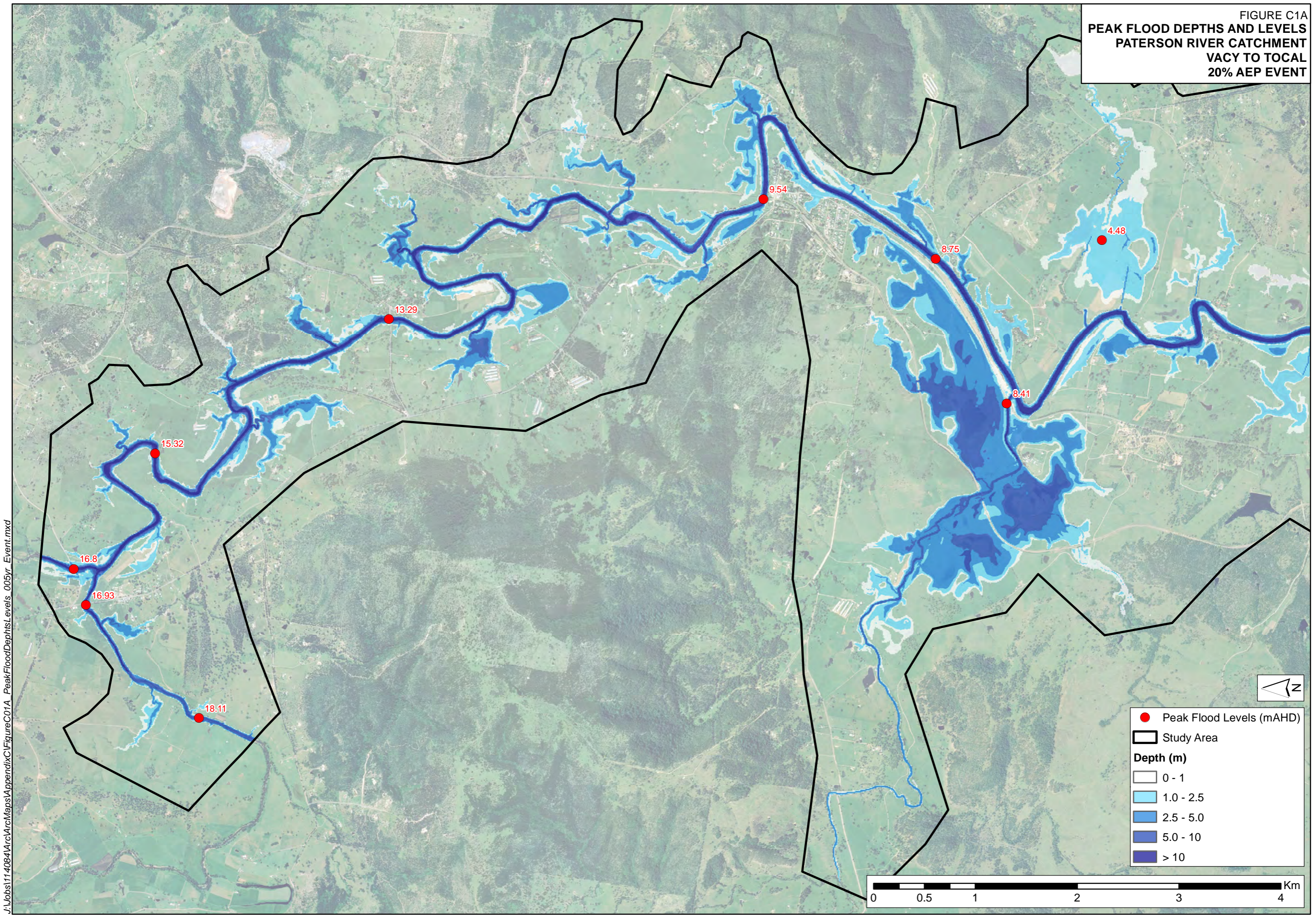
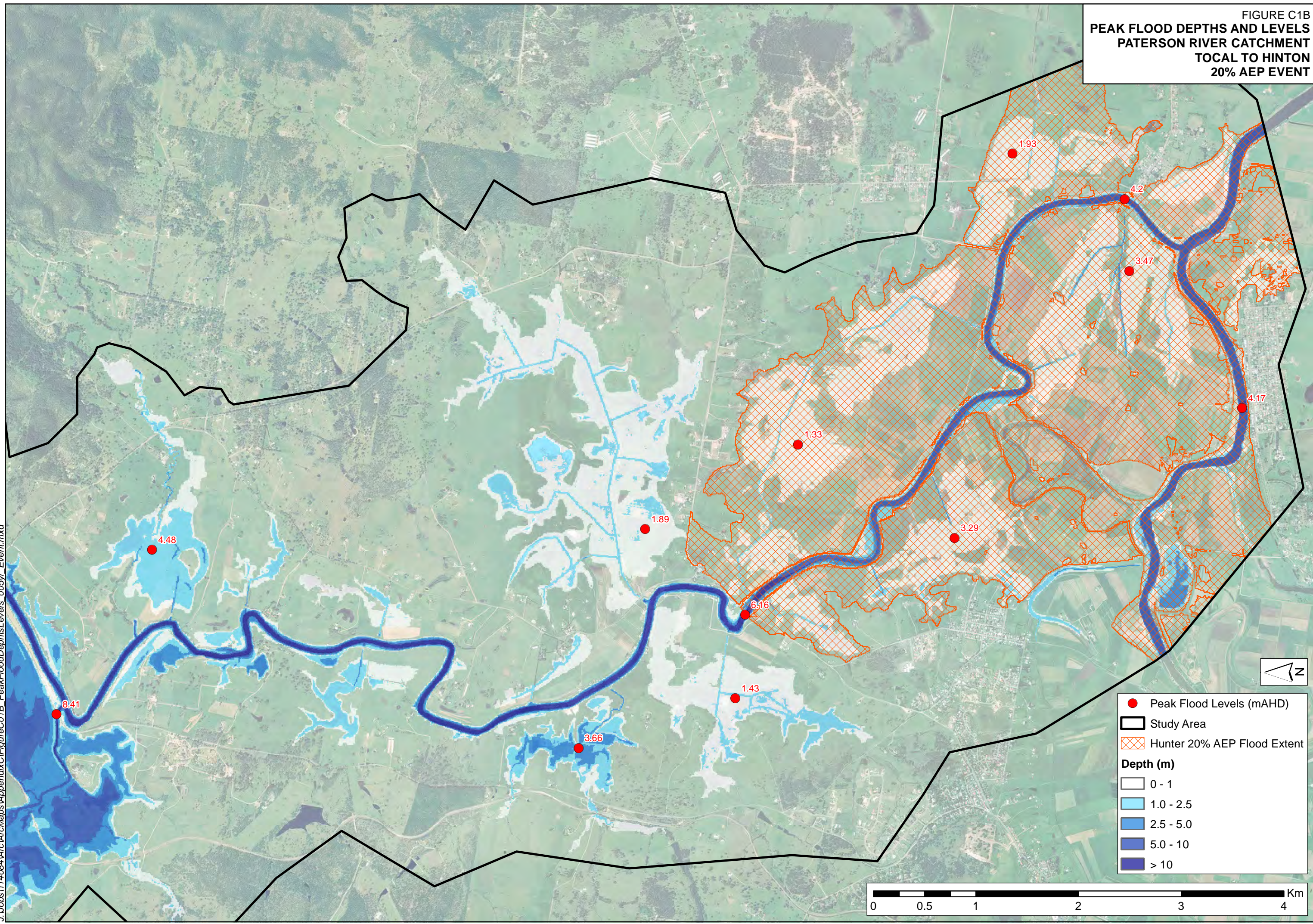


FIGURE C1B
 PEAK FLOOD DEPTHS AND LEVELS
 PATERSON RIVER CATCHMENT
 TOTAL TO HINTON
 20% AEP EVENT



J:\Jobs\114084\Arc\Maps\AppendixC\FigureC01B_PeakFloodDepthsLevels_005yr_Event.mxd

0 0.5 1 2 3 4 Km

FIGURE C2A
PEAK FLOOD DEPTHS AND LEVELS
PATERSON RIVER CATCHMENT
VACY TO TICAL
10% AEP EVENT

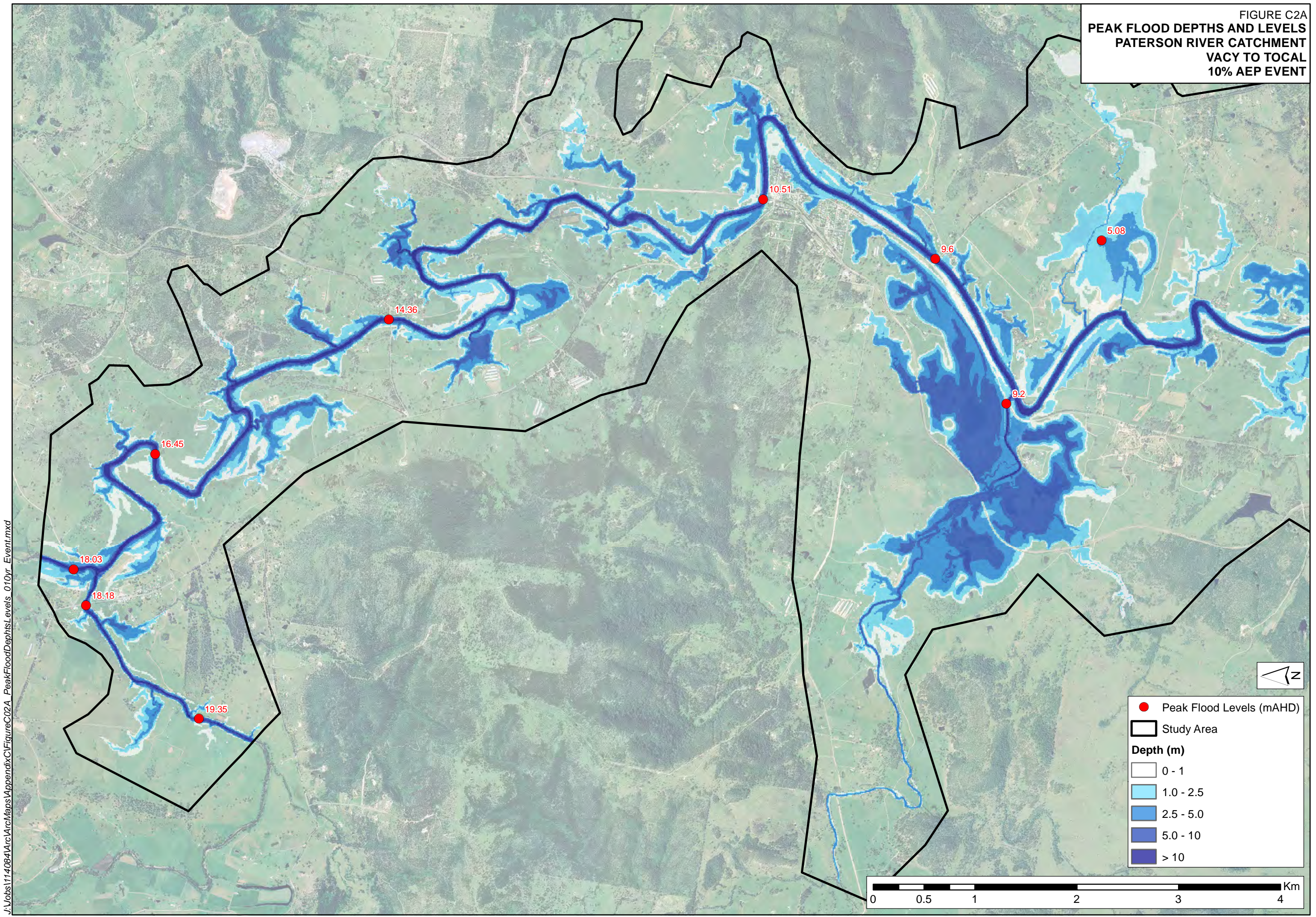
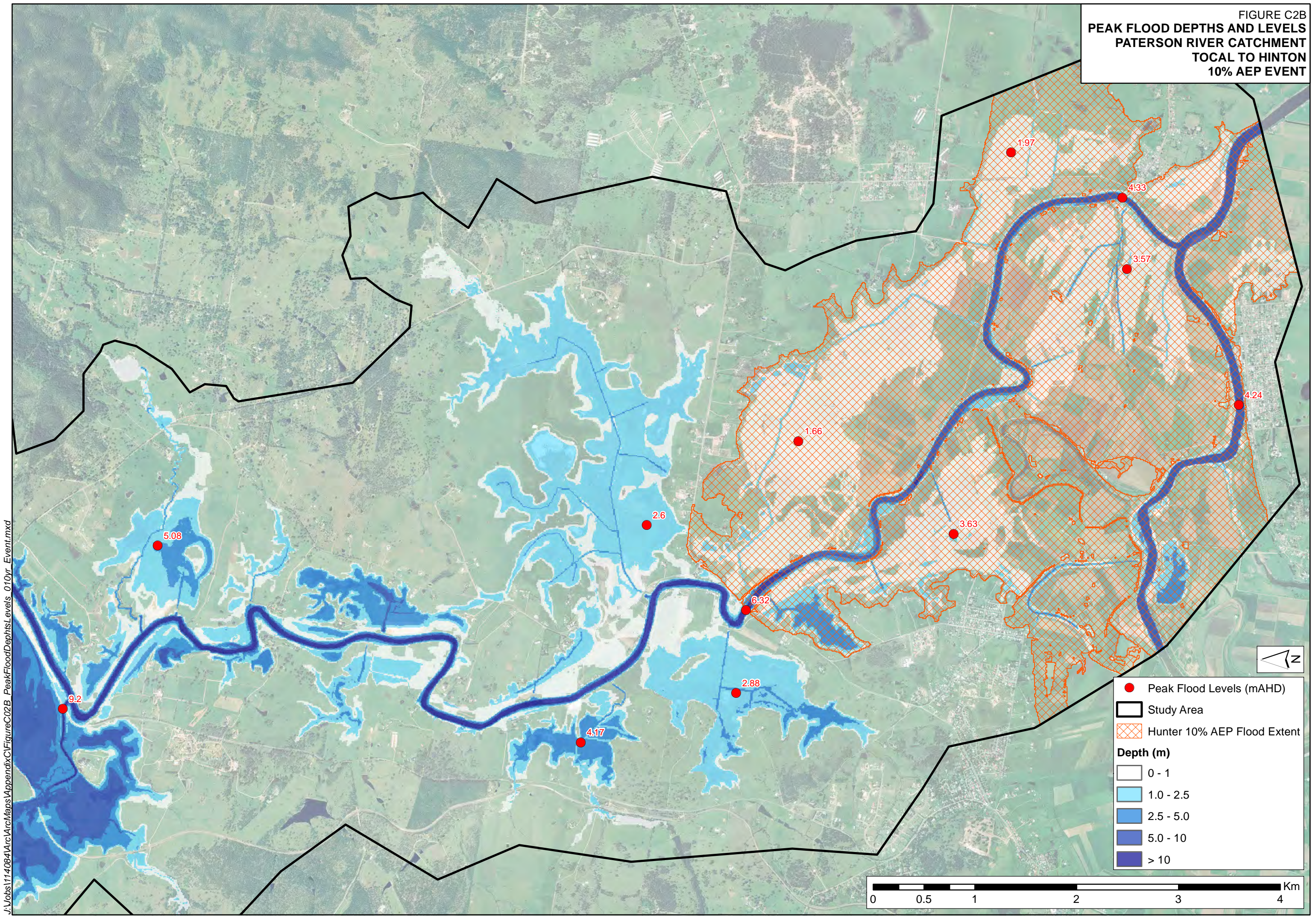


FIGURE C2B
 PEAK FLOOD DEPTHS AND LEVELS
 PATERSON RIVER CATCHMENT
 TOTAL TO HINTON
 10% AEP EVENT



J:\Jobs\114084\Arc\Maps\Appendix\FigureC02B_PeakFloodDepthsLevels_010yr_Event.mxd

0 0.5 1 2 3 4 Km



- Peak Flood Levels (mAHD)
 - ▭ Study Area
 - ▨ Hunter 10% AEP Flood Extent
- Depth (m)**
- 0 - 1
 - 1.0 - 2.5
 - 2.5 - 5.0
 - 5.0 - 10
 - > 10

FIGURE C3A
PEAK FLOOD DEPTHS AND LEVELS
PATERSON RIVER CATCHMENT
VACY TO TICAL
5% AEP EVENT

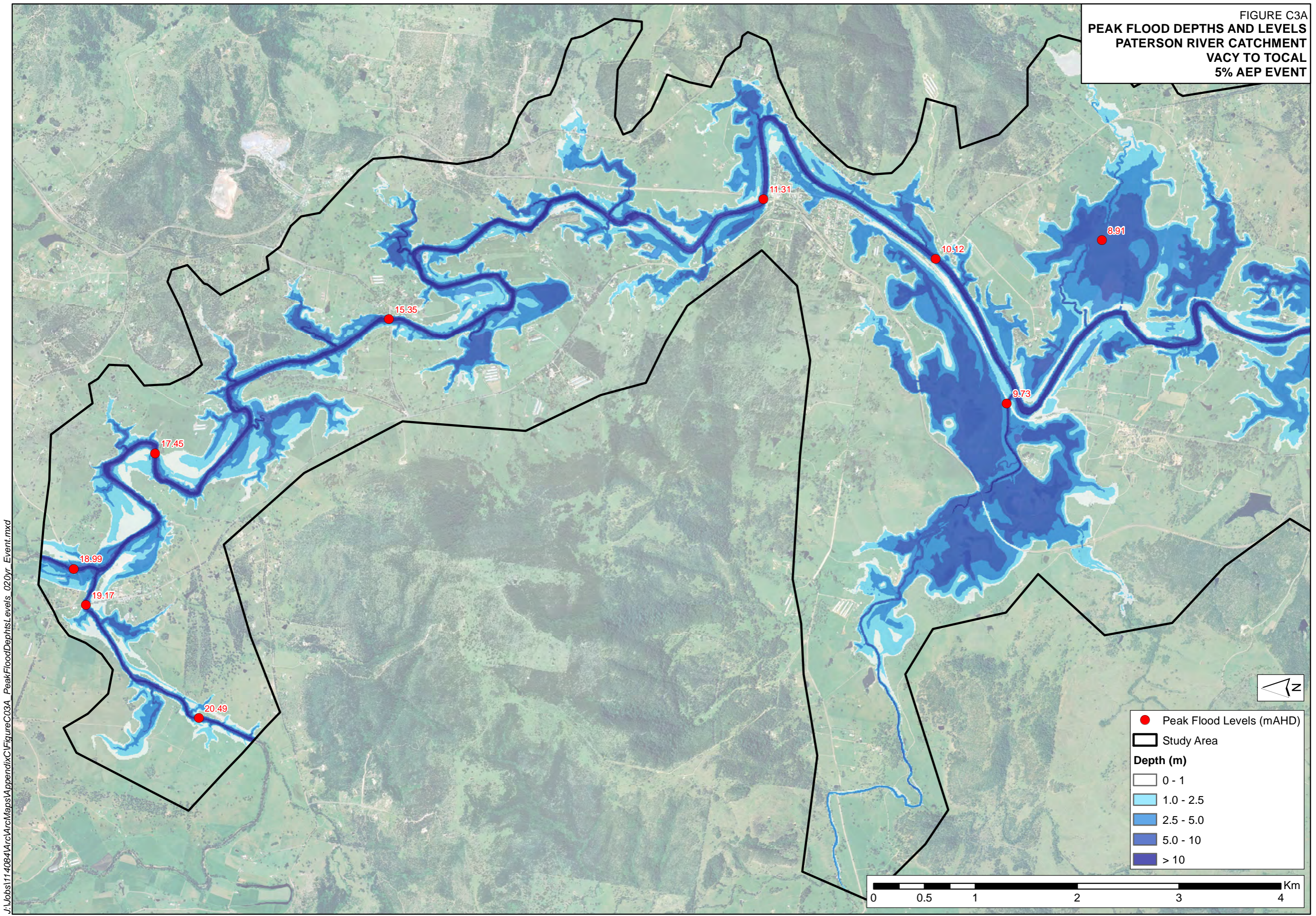
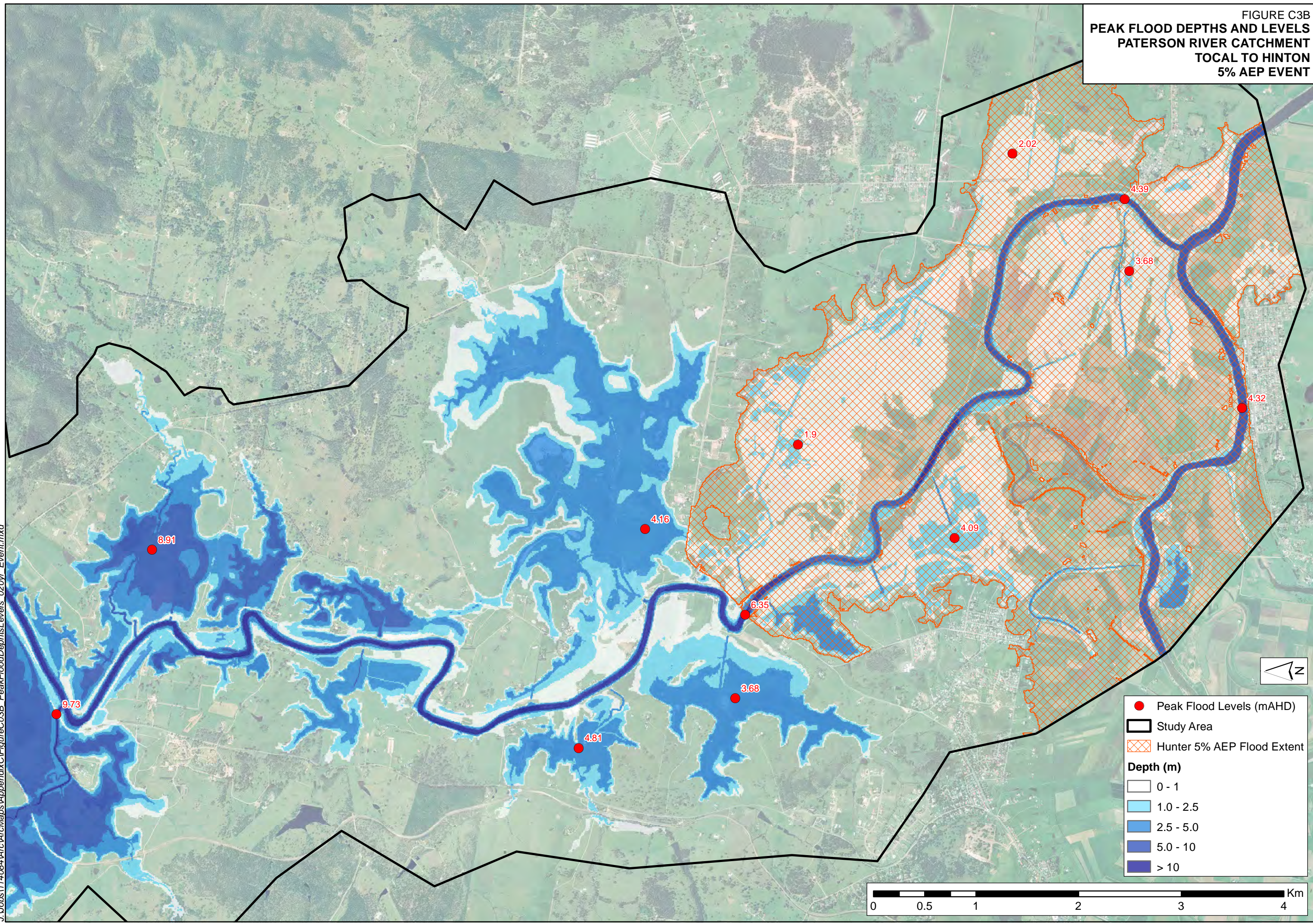
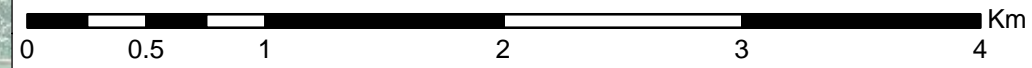


FIGURE C3B
 PEAK FLOOD DEPTHS AND LEVELS
 PATERSON RIVER CATCHMENT
 TOTAL TO HINTON
 5% AEP EVENT



J:\Jobs\114084\Arc\Maps\Appendix\FigureC03B_PeakFloodDepthsLevels_020yr_Event.mxd



- Peak Flood Levels (mAHW)
- Study Area
- Hunter 5% AEP Flood Extent

Depth (m)

- 0 - 1
- 1.0 - 2.5
- 2.5 - 5.0
- 5.0 - 10
- > 10

FIGURE C4A
PEAK FLOOD DEPTHS AND LEVELS
PATERSON RIVER CATCHMENT
VACY TO TOLCAL
2% AEP EVENT

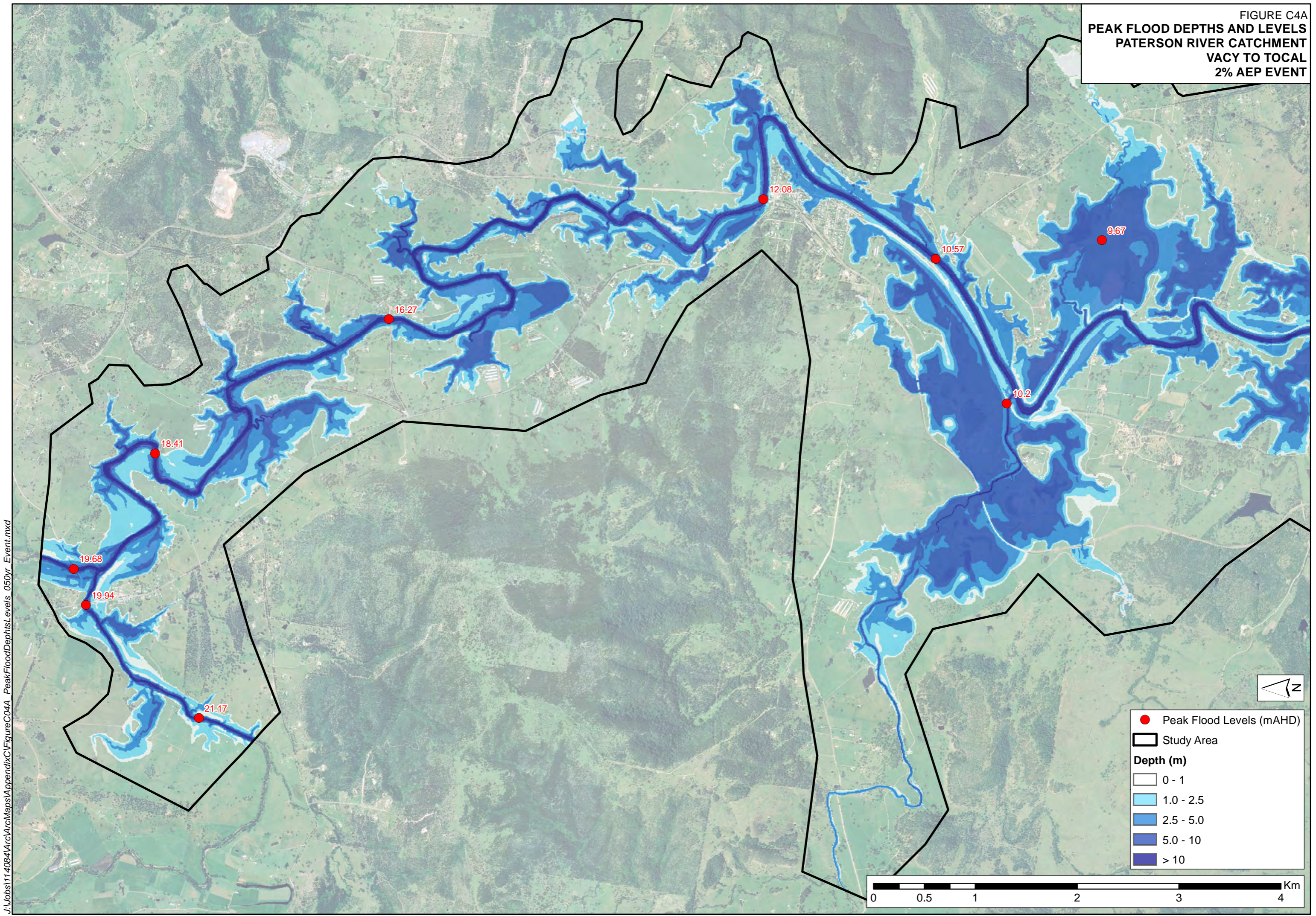
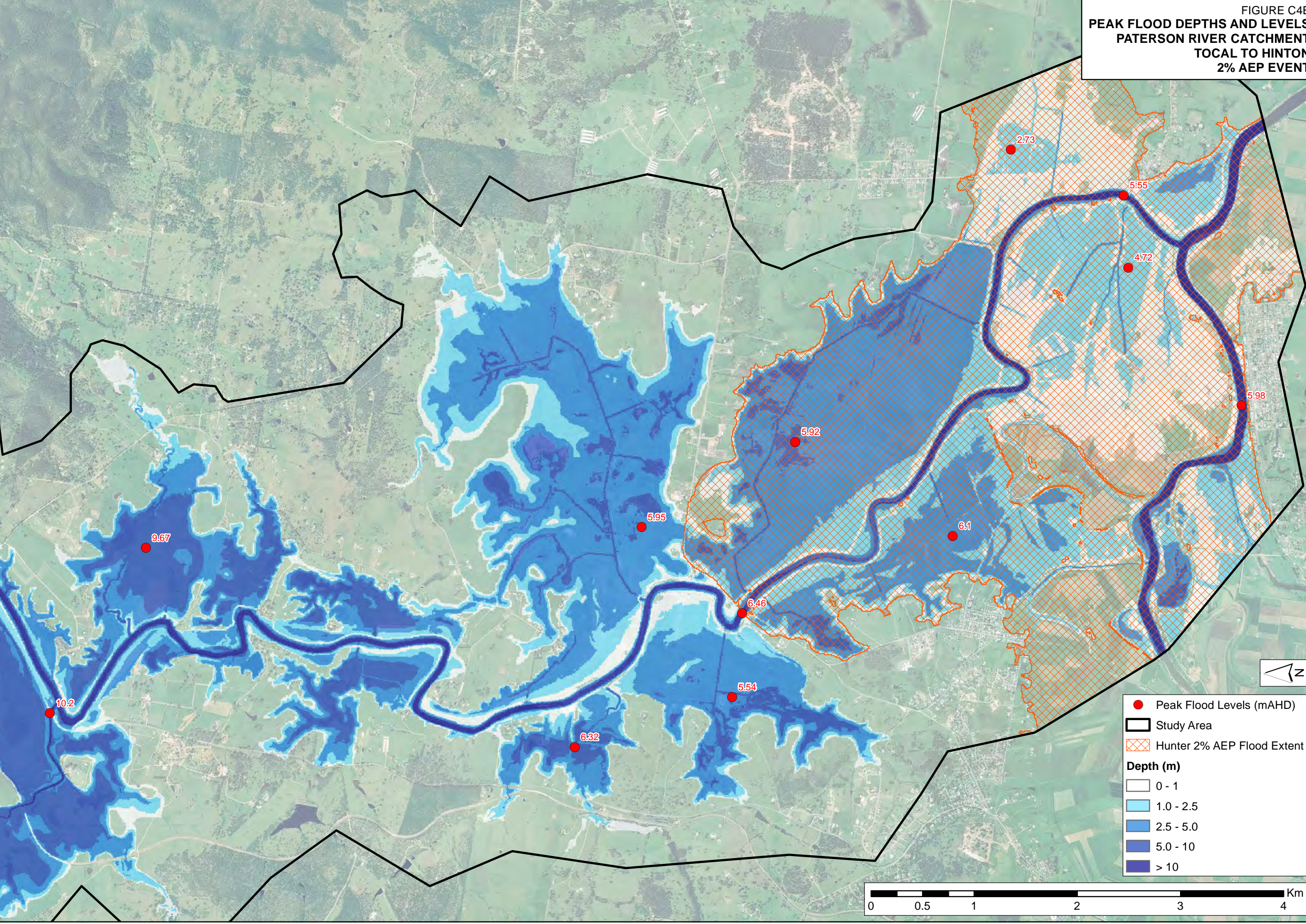


FIGURE C4B
 PEAK FLOOD DEPTHS AND LEVELS
 PATERSON RIVER CATCHMENT
 TOTAL TO HINTON
 2% AEP EVENT



J:\Jobs\114084\Arc\Maps\AppendixC\FigureC04B_PeakFloodDepthsLevels_050yr_Event.mxd



- Peak Flood Levels (mAHD)
 - Study Area
 - Hunter 2% AEP Flood Extent
- Depth (m)**
- 0 - 1
 - 1.0 - 2.5
 - 2.5 - 5.0
 - 5.0 - 10
 - > 10

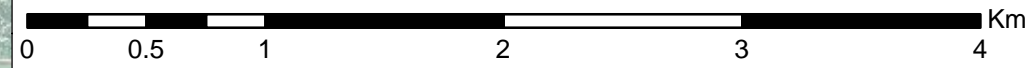
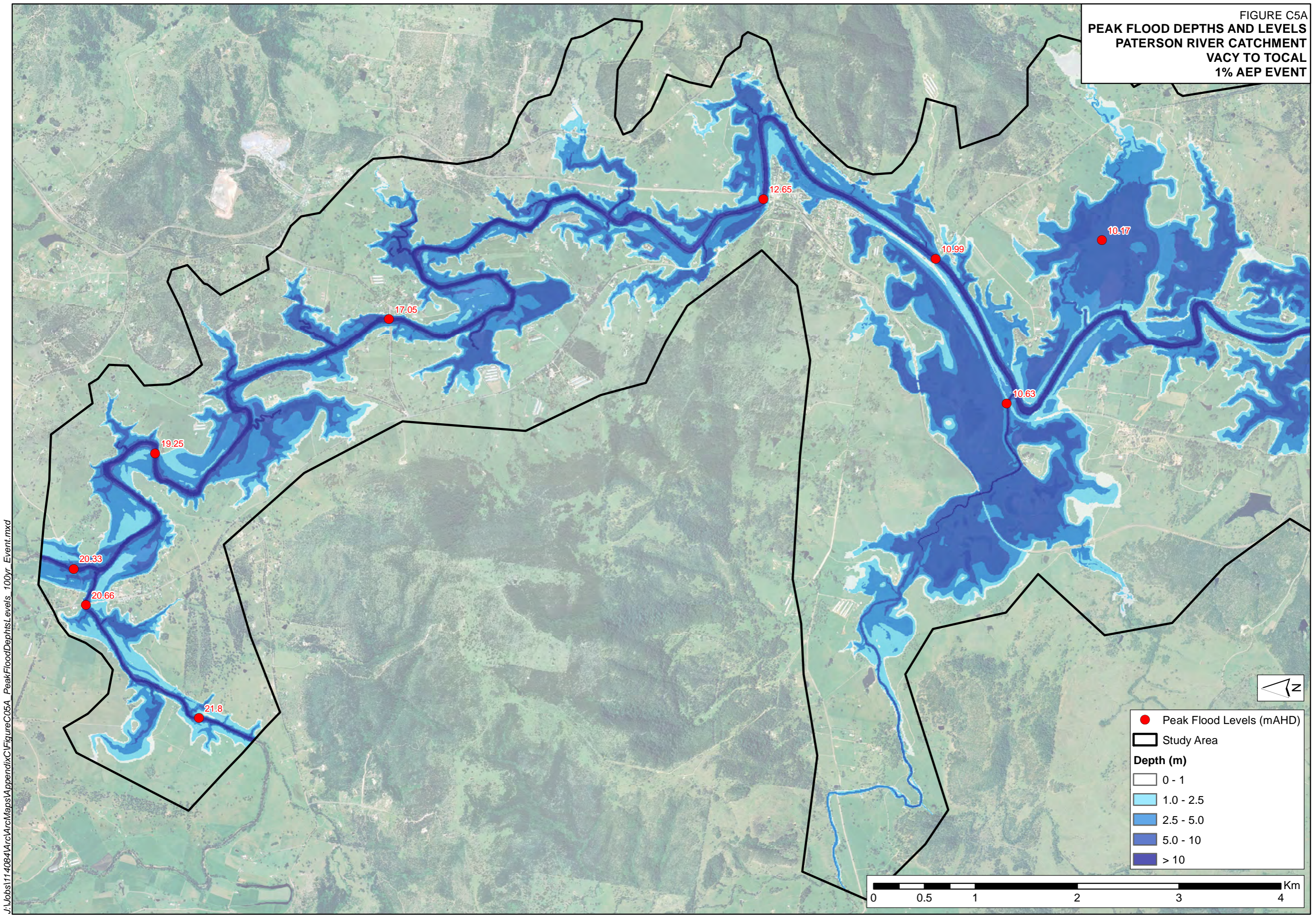


FIGURE C5A
PEAK FLOOD DEPTHS AND LEVELS
PATERSON RIVER CATCHMENT
VACY TO TOLCAL
1% AEP EVENT



J:\Jobs\114084\Arc\Maps\Appendix\FigureC05A_PeakFloodDepths\Levels_100yr_Event.mxd

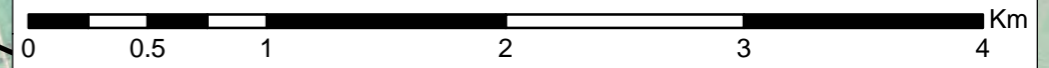
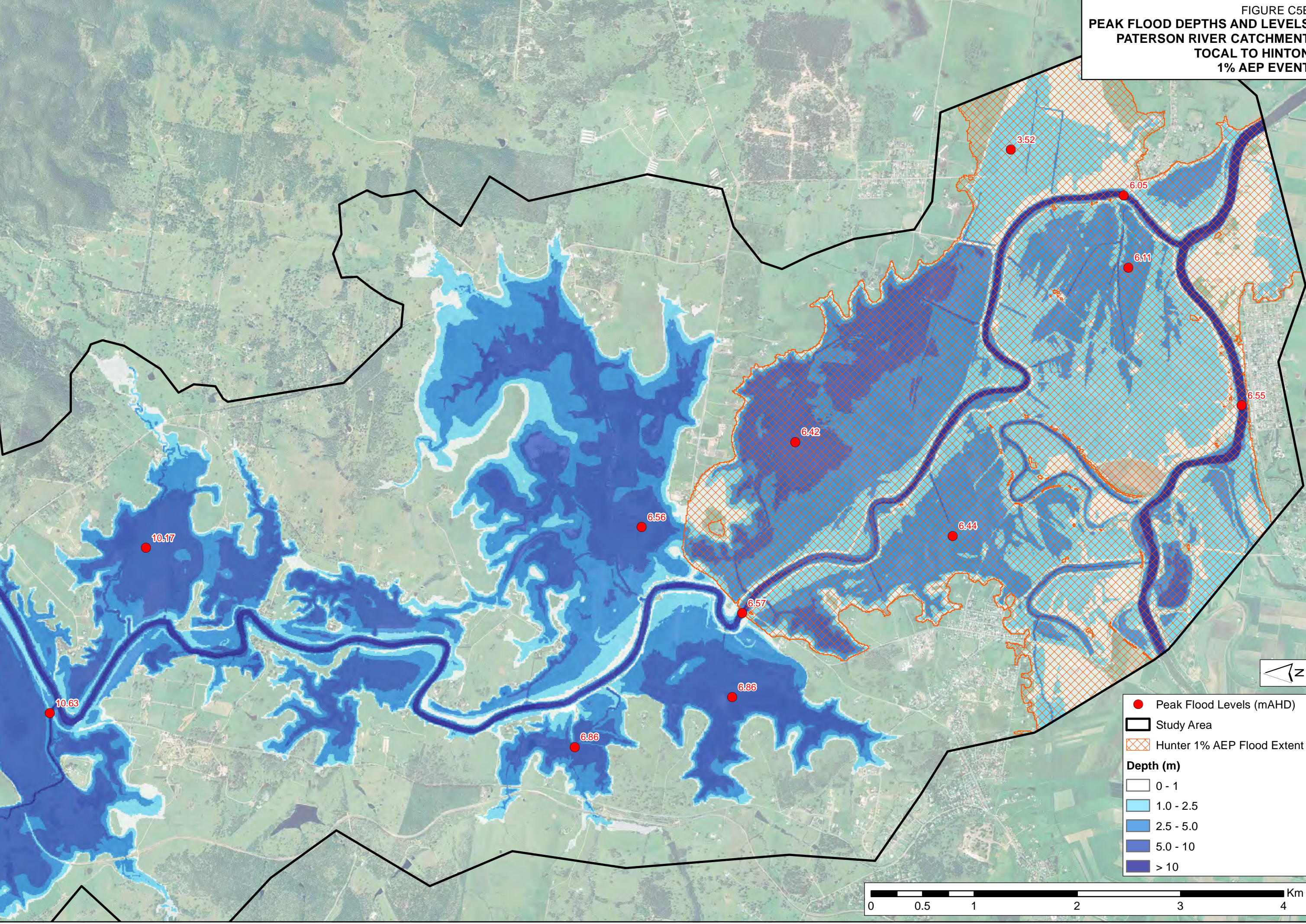


FIGURE C5B
 PEAK FLOOD DEPTHS AND LEVELS
 PATERSON RIVER CATCHMENT
 TOTAL TO HINTON
 1% AEP EVENT



J:\Jobs\114084\Arc\Maps\AppendixC\FigureC05B_PeakFloodDepthsLevels_100yr_Event.mxd

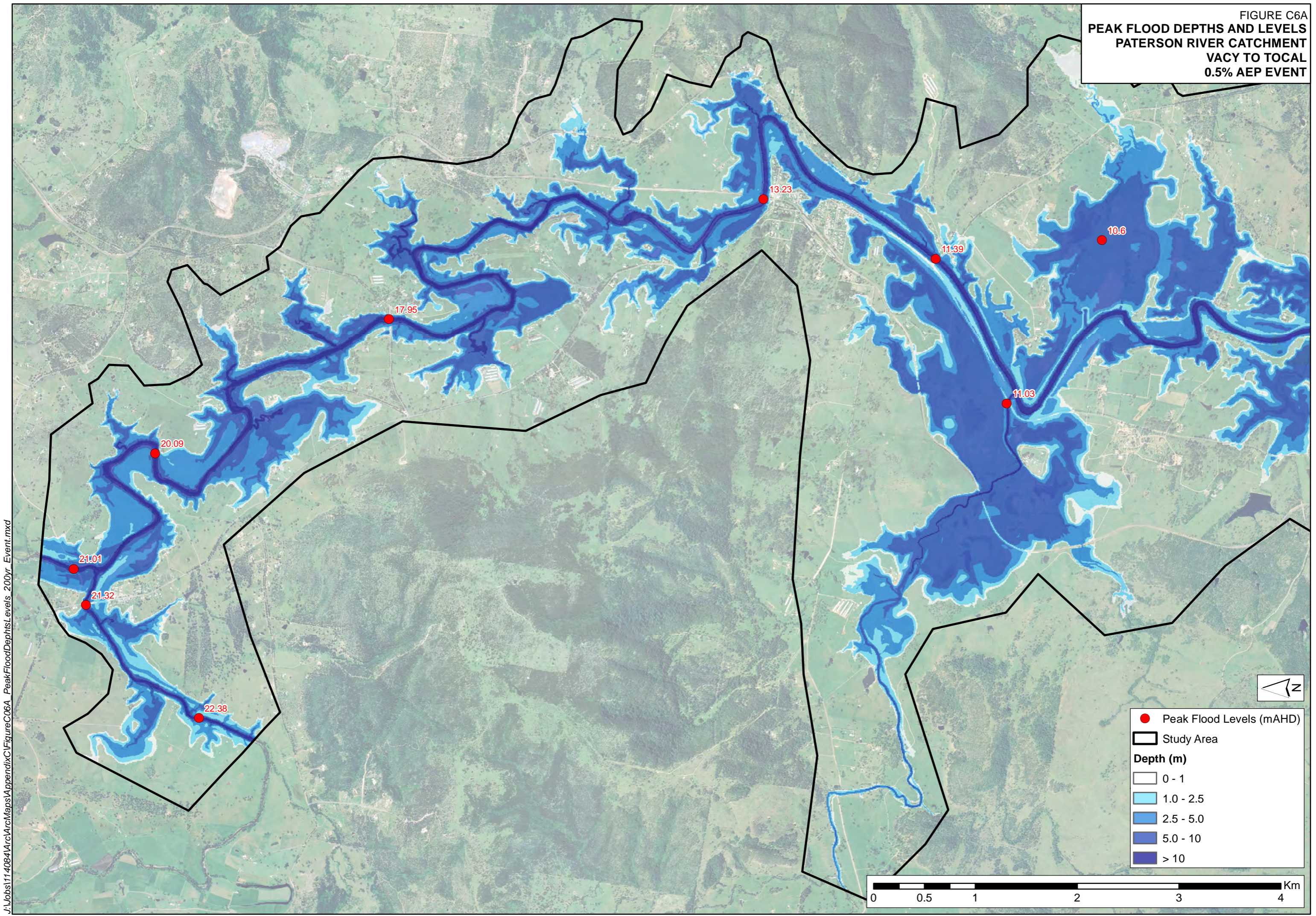
- Peak Flood Levels (mAHD)
- Study Area
- Hunter 1% AEP Flood Extent

Depth (m)

- 0 - 1
- 1.0 - 2.5
- 2.5 - 5.0
- 5.0 - 10
- > 10

0 0.5 1 2 3 4 Km

FIGURE C6A
PEAK FLOOD DEPTHS AND LEVELS
PATERSON RIVER CATCHMENT
VACY TO TOLCAL
0.5% AEP EVENT

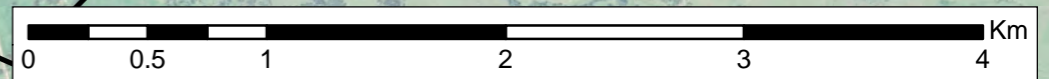


● Peak Flood Levels (mAHW)

▭ Study Area

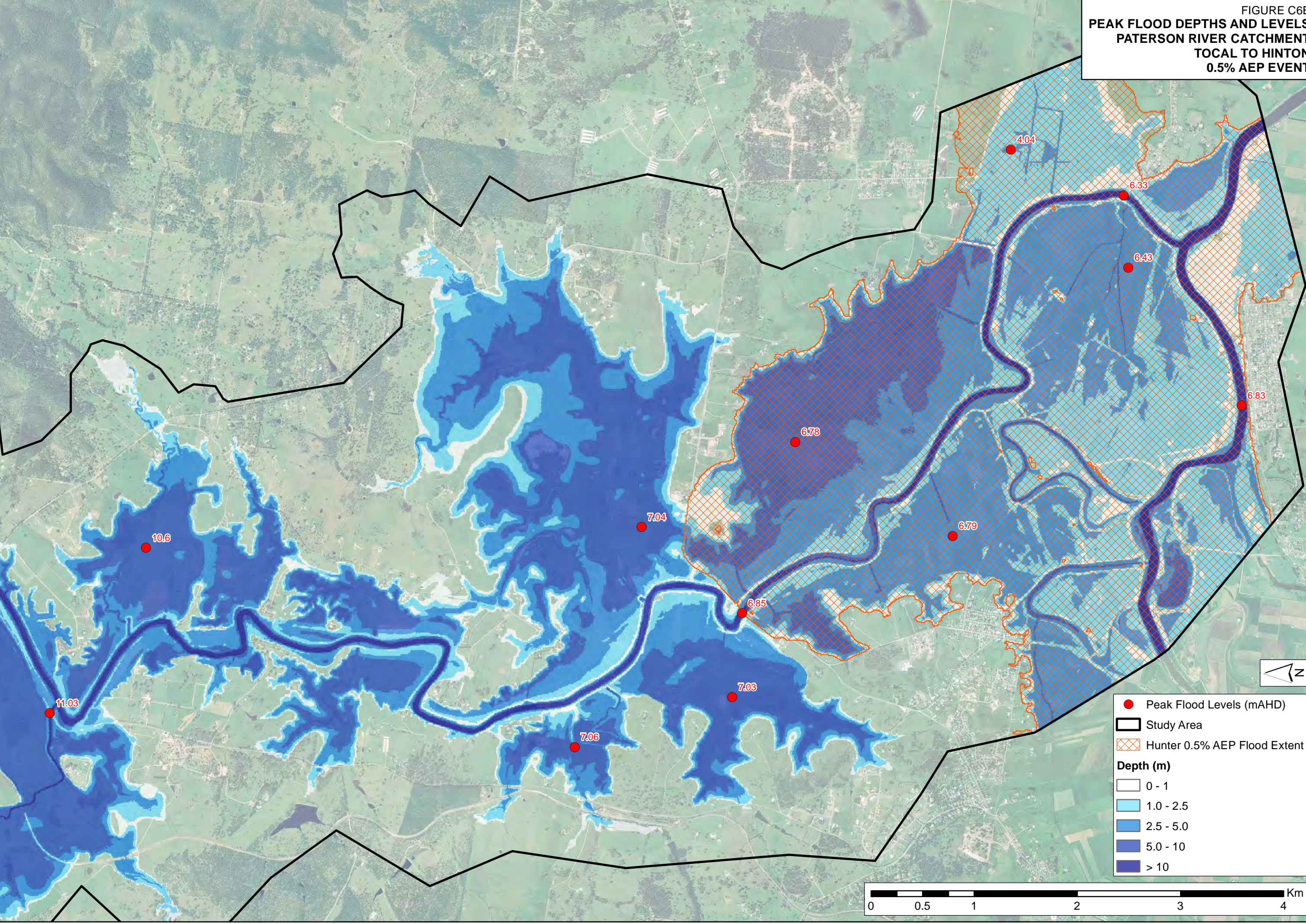
Depth (m)

- 0 - 1
- 1.0 - 2.5
- 2.5 - 5.0
- 5.0 - 10
- > 10



J:\Jobs\114084\Arc\Maps\Appendix\FigureC06A_PeakFloodDepths\Levels_200yr_Event.mxd

FIGURE C6B
 PEAK FLOOD DEPTHS AND LEVELS
 PATERSON RIVER CATCHMENT
 TOTAL TO HINTON
 0.5% AEP EVENT



J:\Jobs\114084\Arc\Maps\AppendixC\FigureC06B_PeakFloodDepthsLevels_200yr_Event.mxd

● Peak Flood Levels (mAHD)
 Study Area
 Hunter 0.5% AEP Flood Extent
Depth (m)
 0 - 1
 1.0 - 2.5
 2.5 - 5.0
 5.0 - 10
 > 10

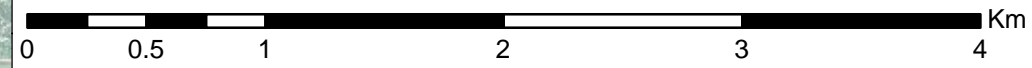
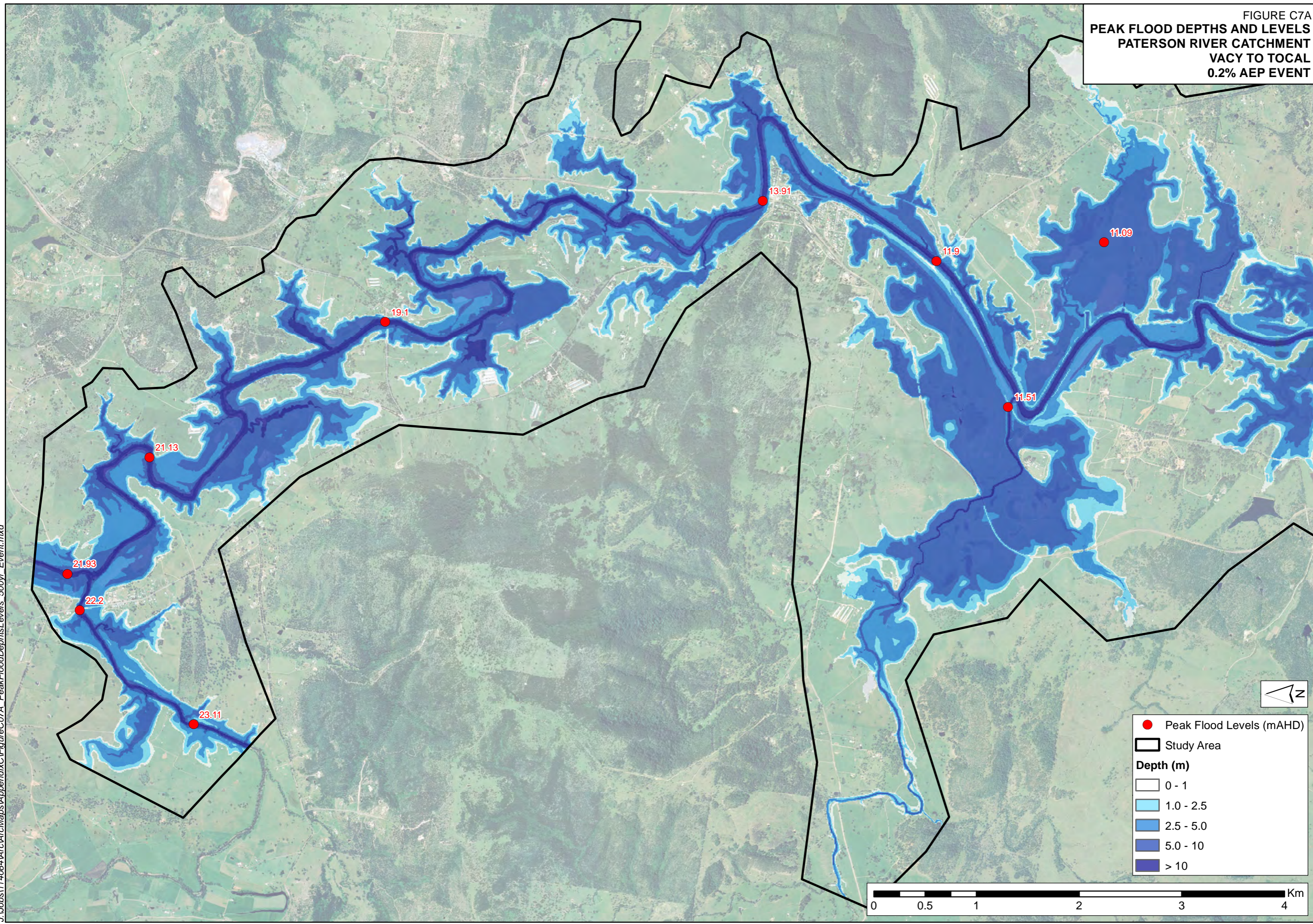
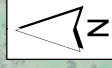


FIGURE C7A
PEAK FLOOD DEPTHS AND LEVELS
PATERSON RIVER CATCHMENT
VACY TO TOLCAL
0.2% AEP EVENT



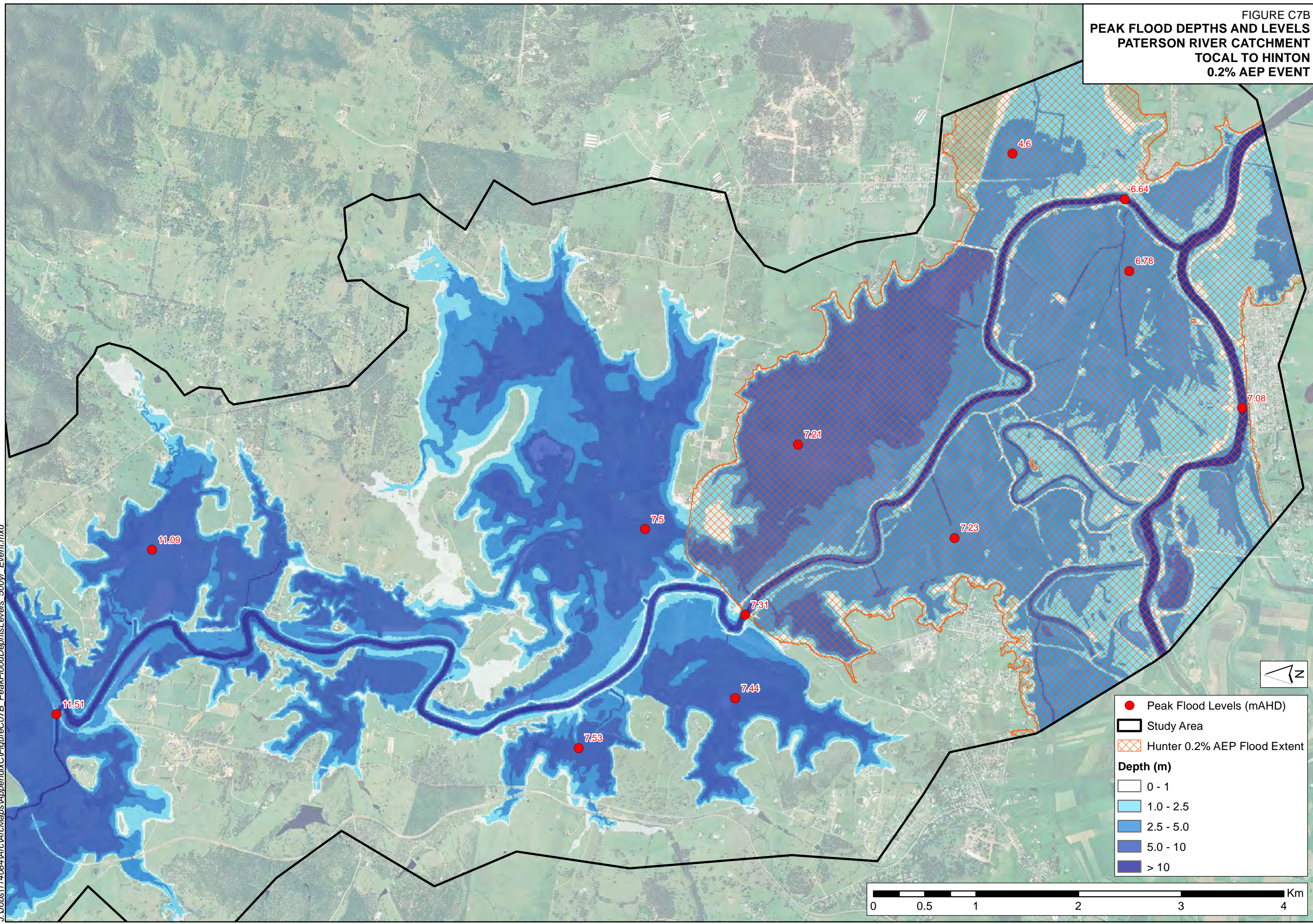
J:\Jobs\114084\Arc\Maps\Appendix\FigureC07A_PeakFloodDepthsLevels_500yr_Event.mxd

0 0.5 1 2 3 4 Km



- Peak Flood Levels (mAHD)
- ▭ Study Area
- Depth (m)**
- 0 - 1
- 1.0 - 2.5
- 2.5 - 5.0
- 5.0 - 10
- > 10

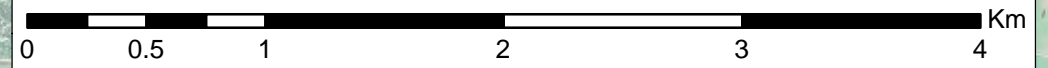
FIGURE C7B
 PEAK FLOOD DEPTHS AND LEVELS
 PATERSON RIVER CATCHMENT
 TOTAL TO HINTON
 0.2% AEP EVENT



- Peak Flood Levels (mAHD)
- Study Area
- Hunter 0.2% AEP Flood Extent

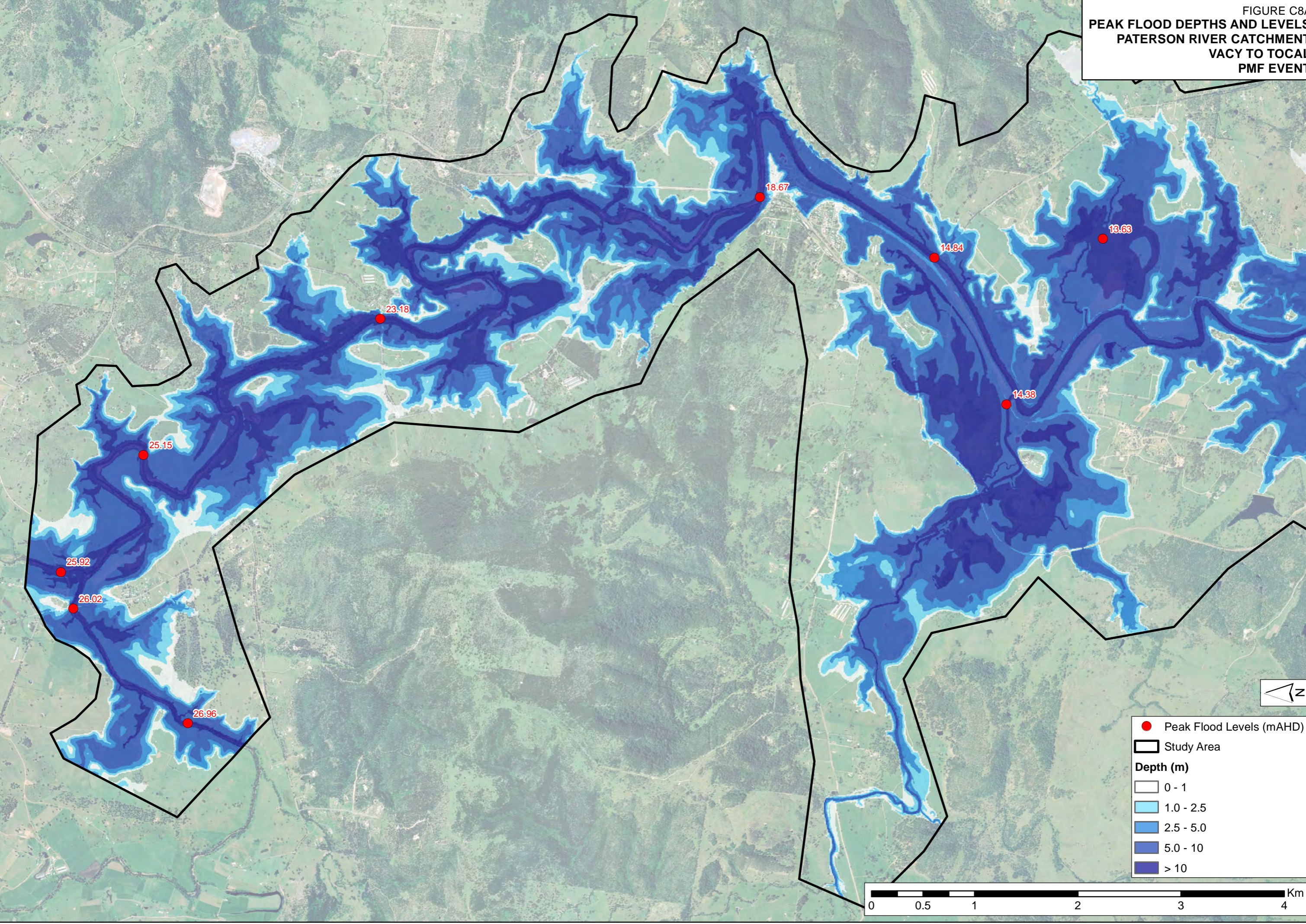
Depth (m)

- 0 - 1
- 1.0 - 2.5
- 2.5 - 5.0
- 5.0 - 10
- > 10



J:\Jobs\114084\Arc\Maps\Appendix\FigureC07B_PeakFloodDepthsLevels_500yr_Event.mxd

FIGURE C8A
PEAK FLOOD DEPTHS AND LEVELS
PATERSON RIVER CATCHMENT
VACY TO TOCAL
PMF EVENT



J:\Jobs\114084\Arc\Maps\Appendix\FigureC08A_PeakFloodDepths\Levels_PMF_Event.mxd

● Peak Flood Levels (mAHWD)

▭ Study Area

Depth (m)

- 0 - 1
- 1.0 - 2.5
- 2.5 - 5.0
- 5.0 - 10
- > 10

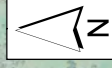
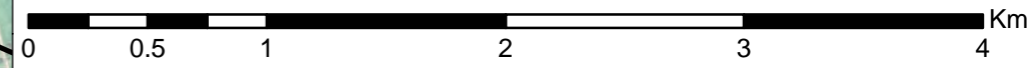
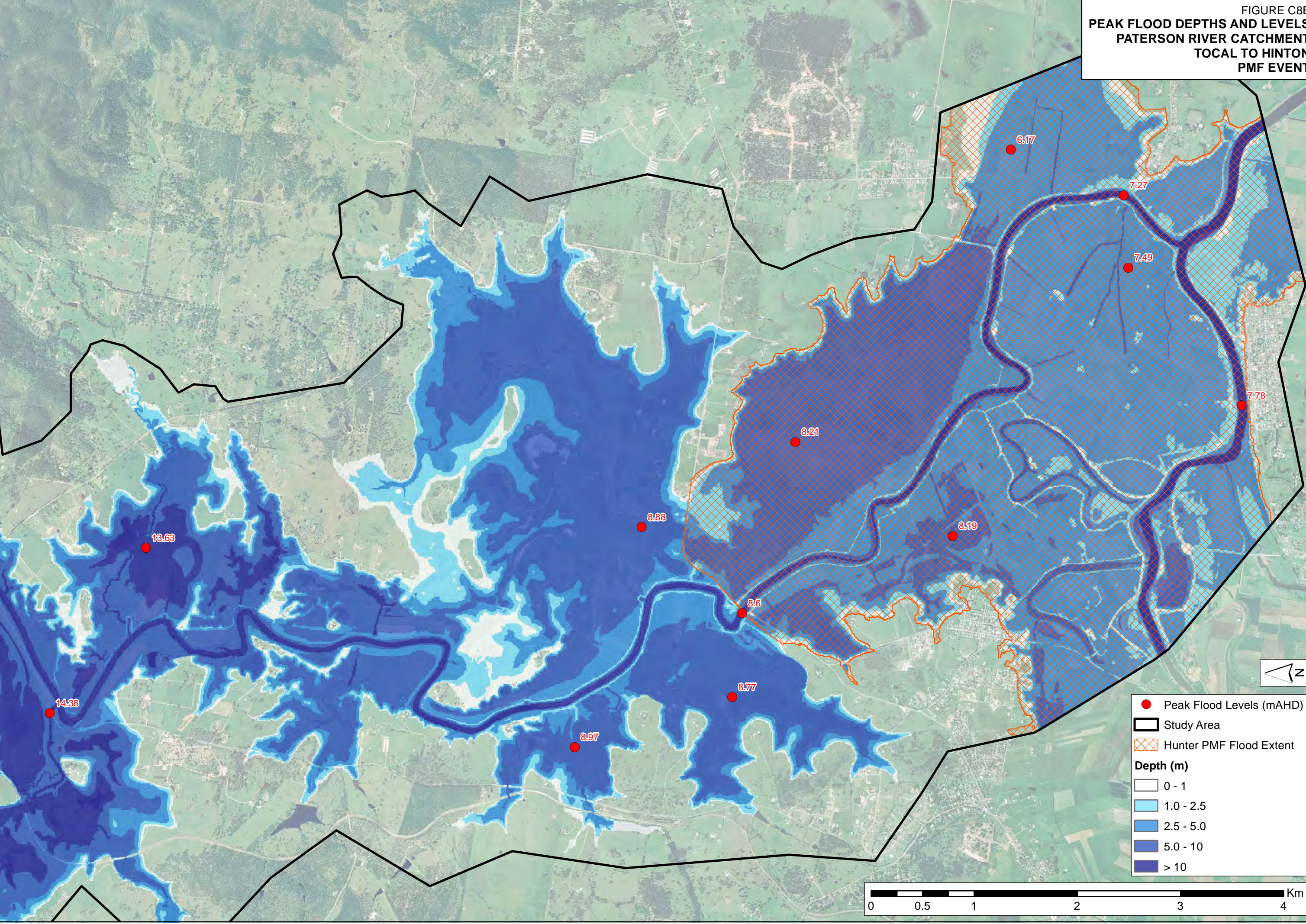


FIGURE C8B
 PEAK FLOOD DEPTHS AND LEVELS
 PATERSON RIVER CATCHMENT
 TOTAL TO HINTON
 PMF EVENT



J:\Jobs\114084\Arc\laps\Appendix\FigureC08B_PeakFloodDepthsLevels_PMF_Event.mxd

- Peak Flood Levels (mAHD)
- ▭ Study Area
- ▨ Hunter PMF Flood Extent
- Depth (m)**
- 0 - 1
- 1.0 - 2.5
- 2.5 - 5.0
- 5.0 - 10
- > 10

0 0.5 1 2 3 4 Km