

Appendix A Design Flood Mapping

Design Flood Inundation Extent, Peak Flood Level Contours and Peak Flood Depth

Figure A1 – 5% AEP Event Existing Conditions

Figure A2 – 2% AEP Event Existing Conditions

Figure A3 – 1% AEP Event Existing Conditions

Figure A4 – 0.5% AEP Event Existing Conditions

Figure A5 – PMF Event Existing Conditions

Figure A6 – 1% AEP Event 2100 Planning Condition (1% AEP+0.9mSLR+20%Flow)

Hydraulic Categories

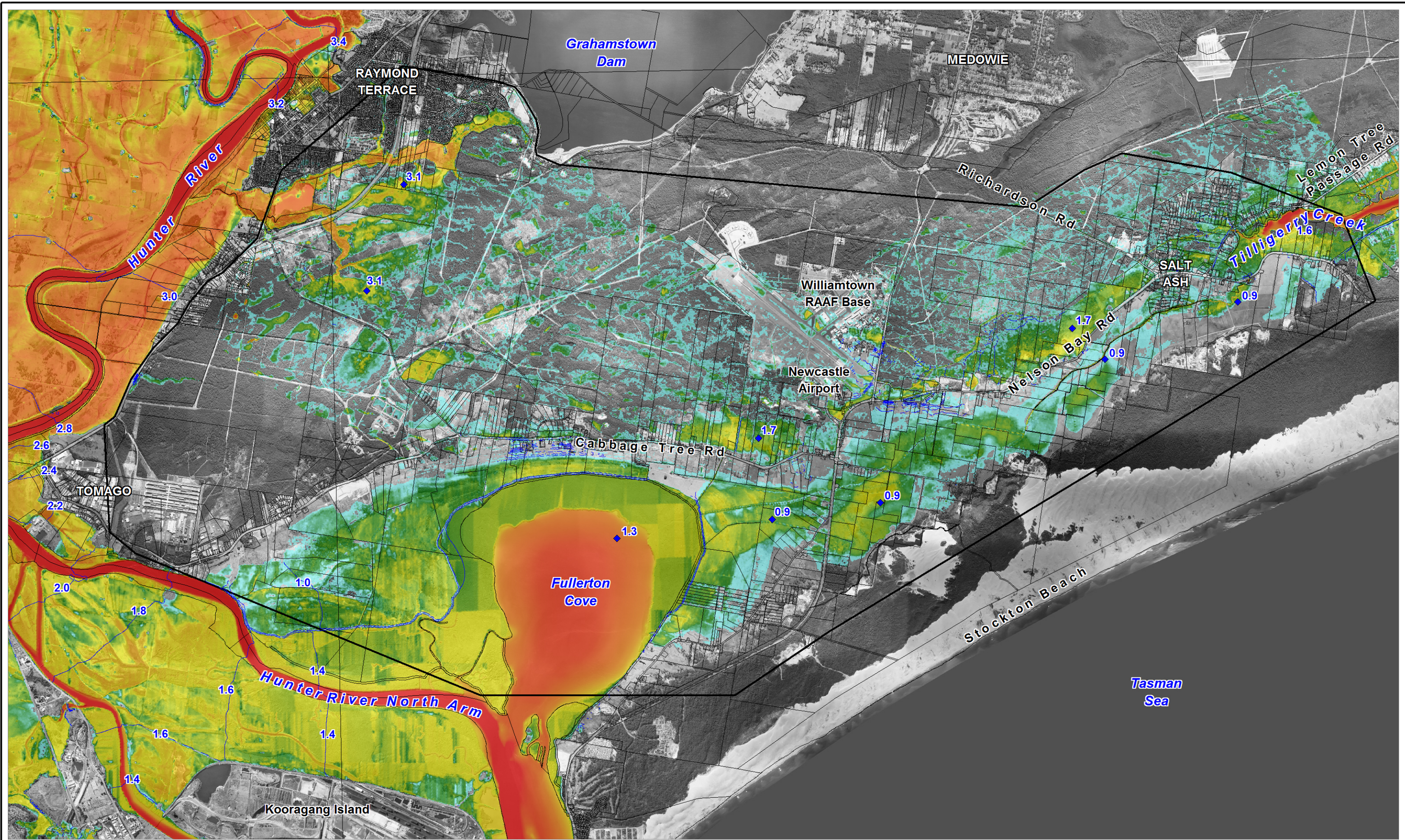
Figure A7 – 1% AEP Event 2100 Planning Condition

Figure A8 – PMF Event Existing Conditions

Hazard Categories

Figure A9 – 1% AEP Event 2100 Planning Condition

Figure A10 – PMF Event Existing Conditions



LEGEND
Peak Flood Depth (m)

0.2	lower depths mapped as same colour
0.5	
1.0	
2.0	
4.0	higher depths mapped as same colour

2.5 Water Level Spot Height (mAHD)
 2.5 Water Level Contour (mAHD)
 Study Area

Title:
5% AEP Design Event - Modelled Flood Depths and Levels Existing Conditions

BMT WBM endeavours to ensure that the information provided in this map is correct at the time of publication. BMT WBM does not warrant, guarantee or make representations regarding the currency and accuracy of information contained in this map.

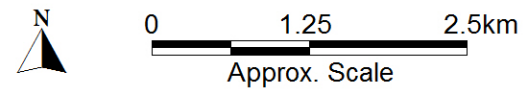
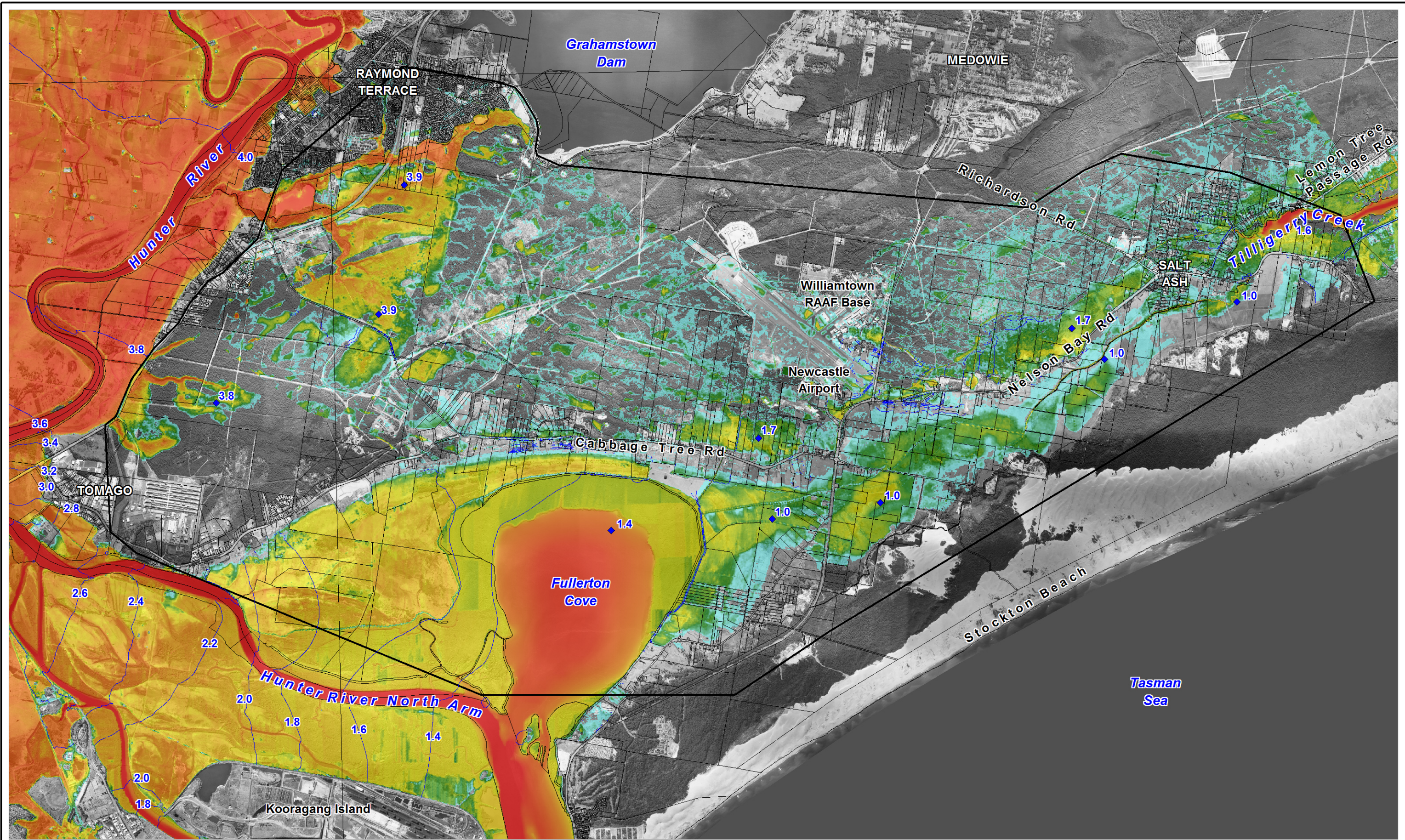


Figure:
A-1

Rev:
A



Filepath : K:\N20209_Williamtown_Salt_Ash_FRMSP\MapInfo\Workspace\5% AEP_Base_h.WOR



LEGEND
Peak Flood Depth (m)

0.2	lower depths mapped as same colour
0.5	
1.0	
2.0	
4.0	higher depths mapped as same colour

2.5 Water Level Spot Height (mAHD)
 2.5 Water Level Contour (mAHD)
 Study Area

Title:
2% AEP Design Event - Modelled Flood Depths and Levels Existing Conditions

BMT WBM endeavours to ensure that the information provided in this map is correct at the time of publication. BMT WBM does not warrant, guarantee or make representations regarding the currency and accuracy of information contained in this map.

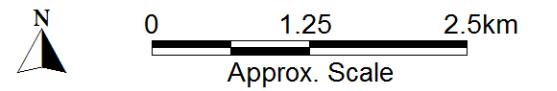


Figure:
A-2

Rev:
A



Filepath : K:\IN20209_Williamtown_Salt_Ash_FRMSP\MapInfo\Workspace\2% AEP_Base_h.WOR