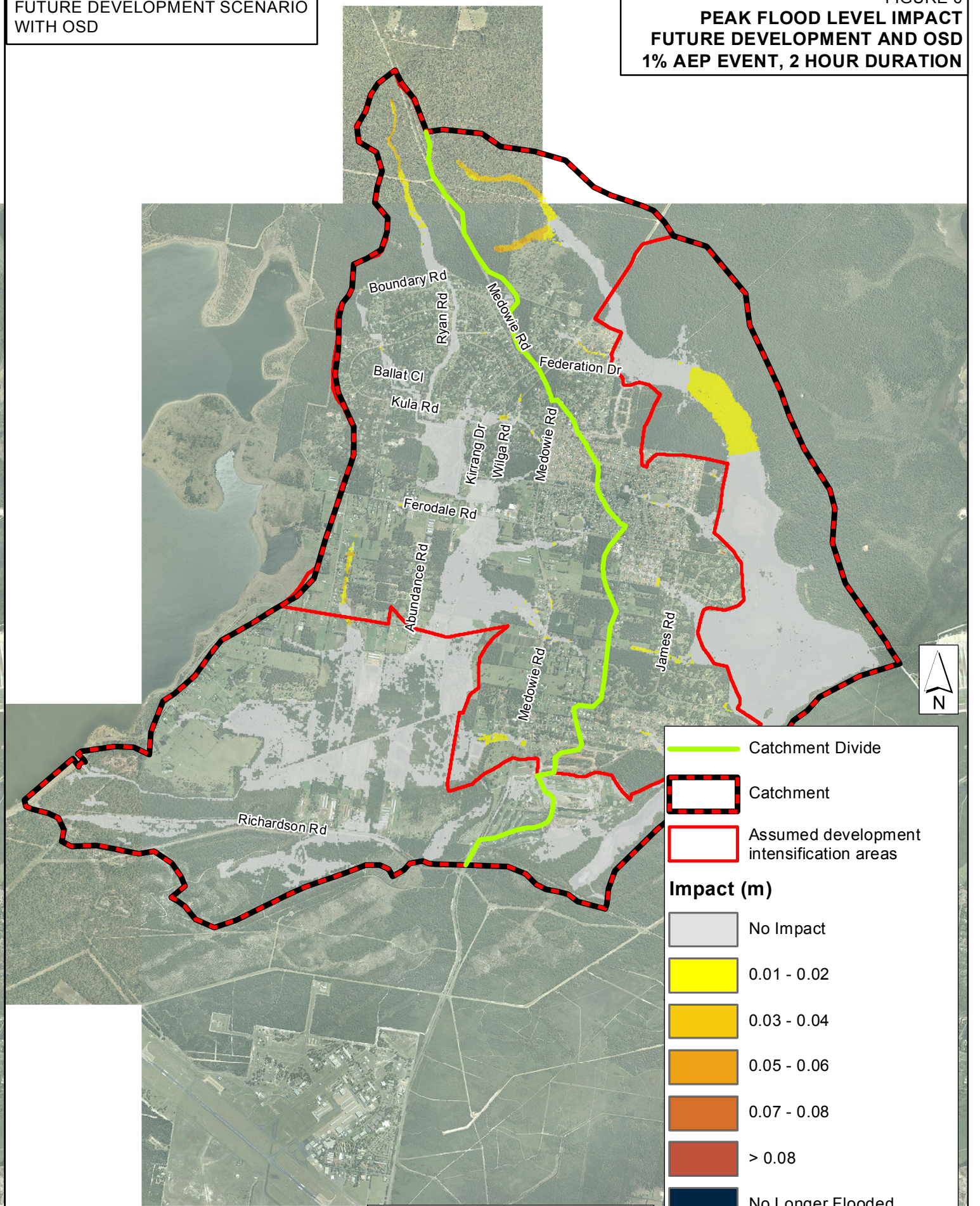
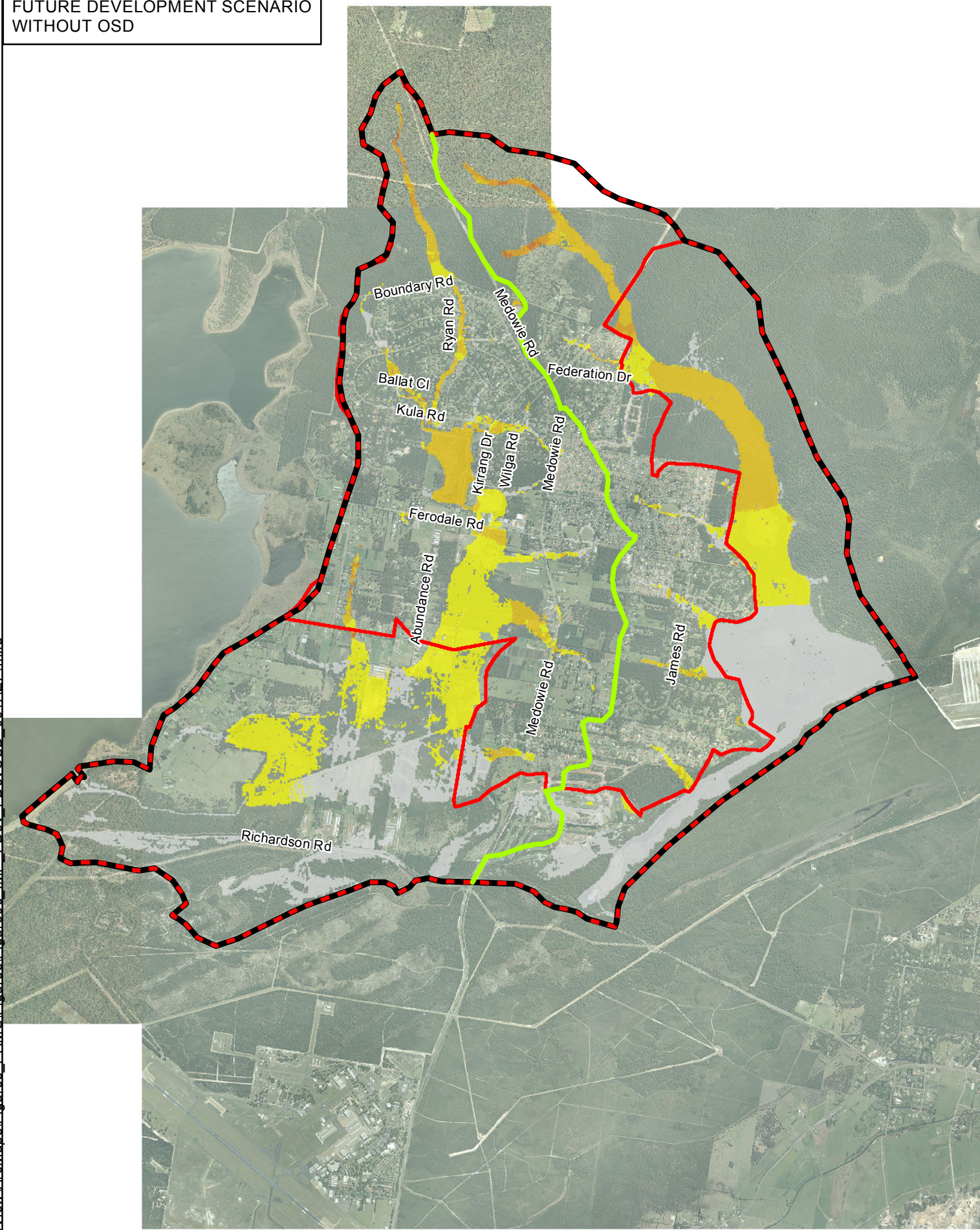


FUTURE DEVELOPMENT SCENARIO
WITHOUT OSD

FUTURE DEVELOPMENT SCENARIO
WITH OSD

FIGURE 6
PEAK FLOOD LEVEL IMPACT
FUTURE DEVELOPMENT AND OSD
1% AEP EVENT, 2 HOUR DURATION

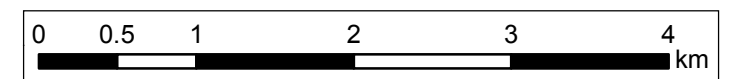


- Catchment Divide
- Catchment
- Assumed development intensification areas

Impact (m)

- No Impact
- 0.01 - 0.02
- 0.03 - 0.04
- 0.05 - 0.06
- 0.07 - 0.08
- > 0.08
- No Longer Flooded
- Newly Flooded

Note: Future development scenario assumes an additional 15% of the catchment area becomes impervious



J:\Jobs\112092\ArcView\ArcMaps\Figures_ERMS\Figures\Figure06_IMP_FDev_FDevOSD_001AEP.mxd