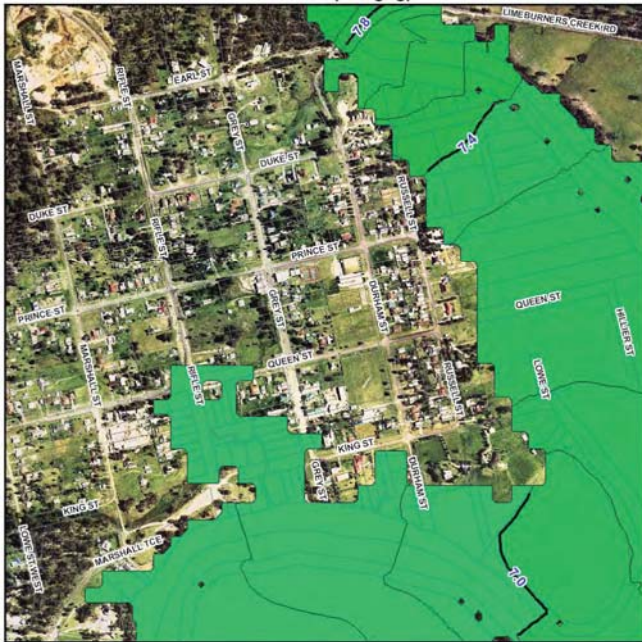
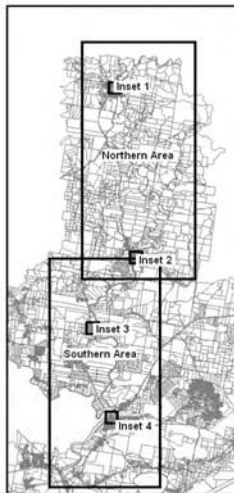




Inset 1 (Dungog)



Inset 2 (Clarence Town)



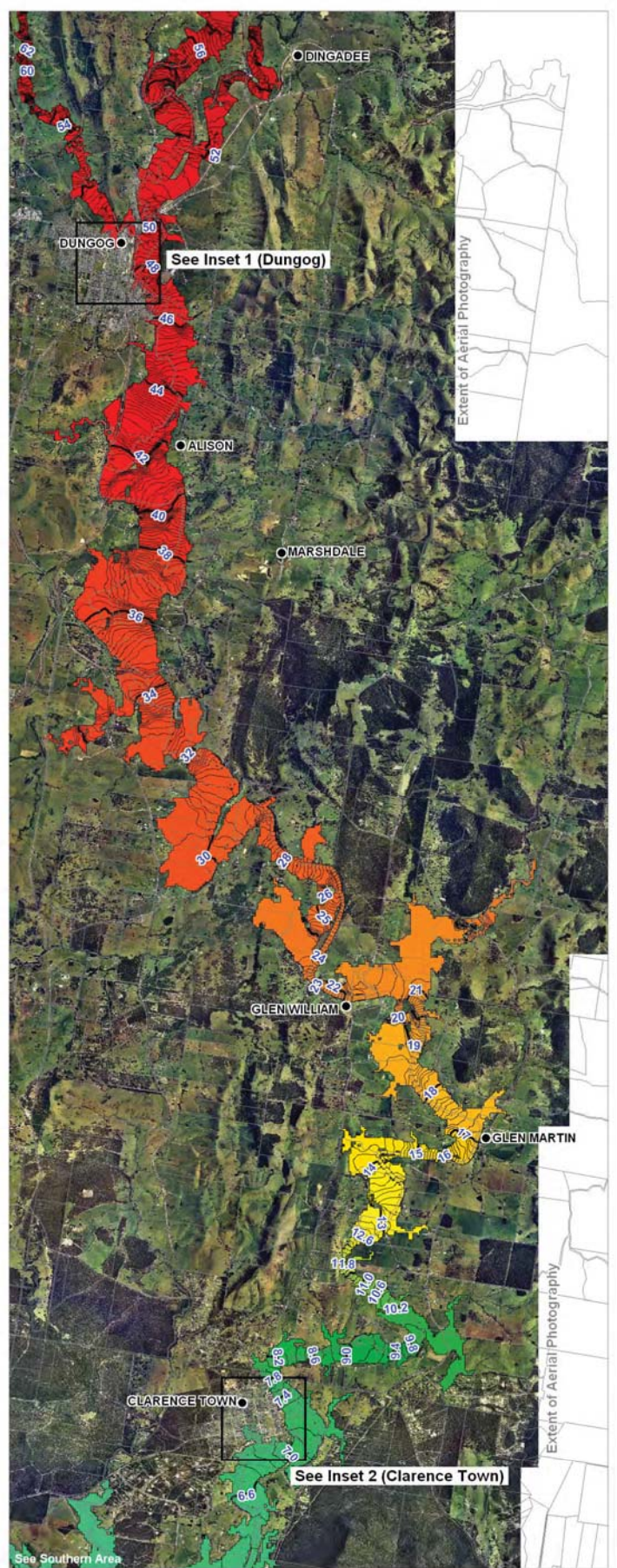
NOTE: Flood Model Simulations include future sea level rise

LEGEND

- Towns
- ▭ Cadastral Boundaries

Modelled Water Level (mAHD)

1.0 to 1.2	4.4 to 4.6	10.6 to 11.0	24.0 to 25.0	56.0 to 58.0
1.2 to 1.4	4.6 to 4.8	11.0 to 11.4	25.0 to 26.0	58.0 to 60.0
1.4 to 1.6	4.8 to 5.0	11.4 to 11.8	26.0 to 28.0	60.0 to 62.0
1.6 to 1.8	5.0 to 5.4	11.8 to 12.2	28.0 to 30.0	62.0 to 64.0
1.8 to 2.0	5.4 to 5.8	12.2 to 12.6	30.0 to 32.0	64.0 to 66.0
2.0 to 2.2	5.8 to 6.2	12.6 to 13.0	32.0 to 34.0	66.0 to 68.0
2.2 to 2.4	6.2 to 6.6	13.0 to 14.0	34.0 to 36.0	68.0 to 70.0
2.4 to 2.6	6.6 to 7.0	14.0 to 15.0	36.0 to 38.0	70.0 to 72.0
2.6 to 2.8	7.0 to 7.4	15.0 to 16.0	38.0 to 40.0	72.0 to 74.0
2.8 to 3.0	7.4 to 7.8	16.0 to 17.0	40.0 to 42.0	74.0 to 76.0
3.0 to 3.2	7.8 to 8.2	17.0 to 18.0	42.0 to 44.0	76.0 to 78.0
3.2 to 3.4	8.2 to 8.6	18.0 to 19.0	44.0 to 46.0	78.0 to 80.0
3.4 to 3.6	8.6 to 9.0	19.0 to 20.0	46.0 to 48.0	80.0 to 82.0
3.6 to 3.8	9.0 to 9.4	20.0 to 21.0	48.0 to 50.0	82.0 to 84.0
3.8 to 4.0	9.4 to 9.8	21.0 to 22.0	50.0 to 52.0	84.0 to 86.0
4.0 to 4.2	9.8 to 10.2	22.0 to 23.0	52.0 to 54.0	86.0 to 88.0
4.2 to 4.4	10.2 to 10.6	23.0 to 24.0	54.0 to 56.0	



Extent of Aerial Photography

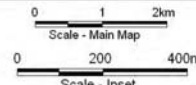
Extent of Aerial Photography

Title:
Williams River 5% AEP Flood Event
Northern Area - Peak Water Level

Figure:
Drawing 32

Rev:
A

BMT WBM endeavours to ensure that the information provided in this map is correct at the time of publication. BMT WBM does not warrant, guarantee or make representations regarding the currency and accuracy of information contained in this map.

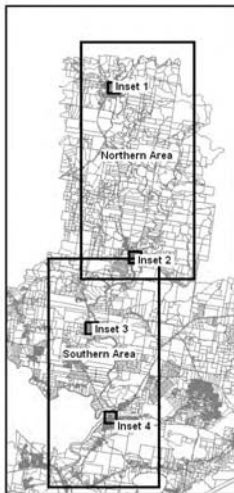




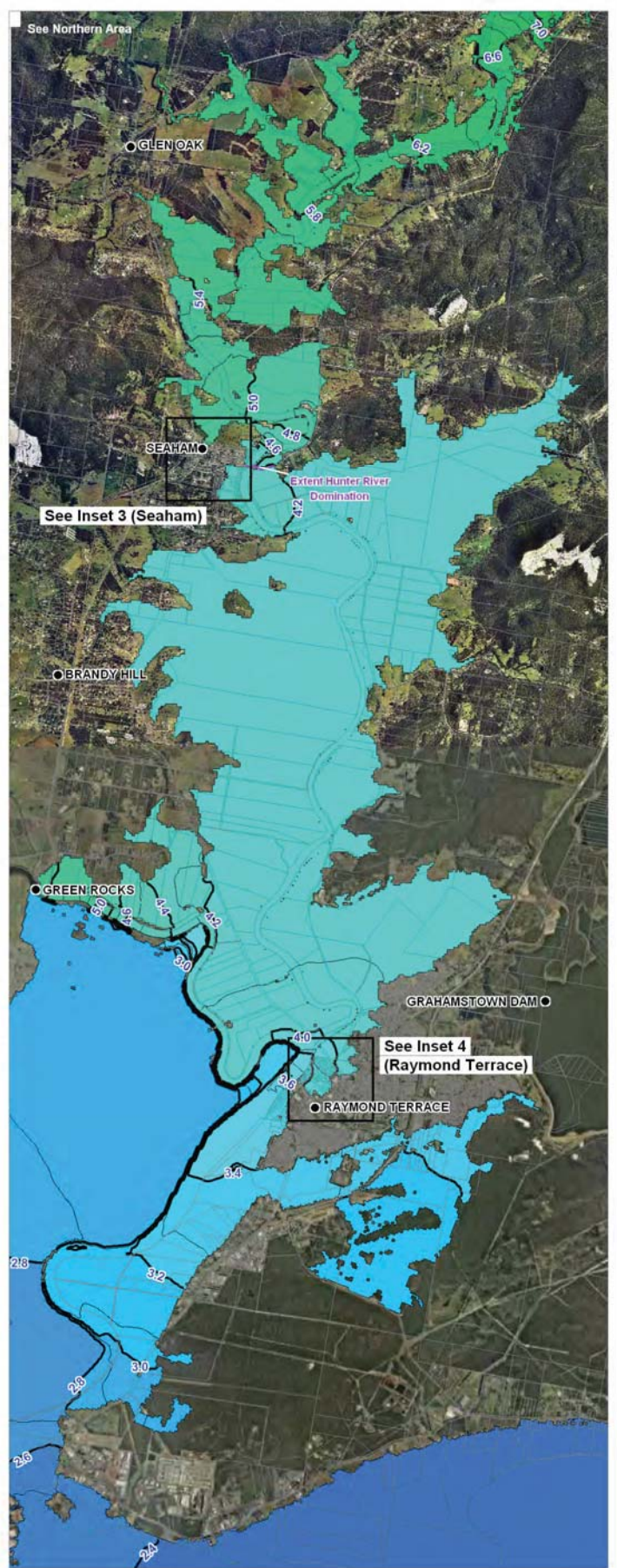
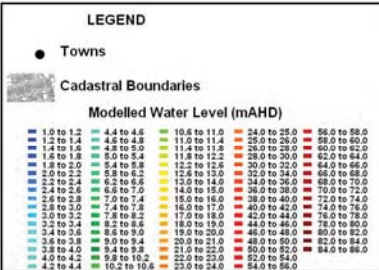
Inset 3 (Seaham)



Inset 4 (Raymond Terrace)



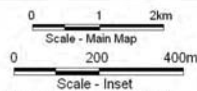
NOTE: Flood Model Simulations include future sea level rise



Title:
Williams River 5% AEP Flood Event
Southern Area - Peak Water Level

Figure: Drawing 33
 Rev: A

BMT WBM endeavours to ensure that the information provided in this map is correct at the time of publication. BMT WBM does not warrant, guarantee or make representations regarding the currency and accuracy of information contained in this map.





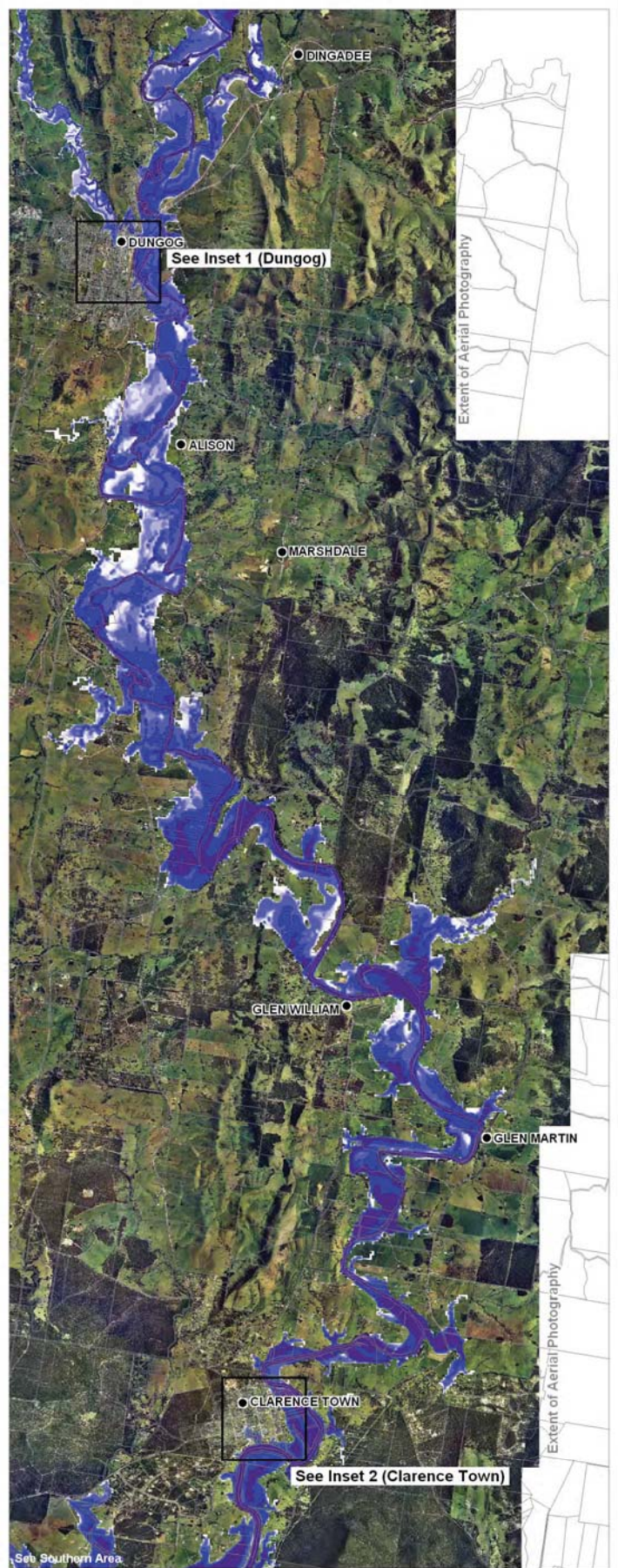
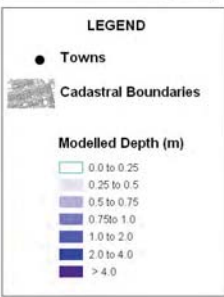
Inset 1 (Dungog)



Inset 2 (Clarence Town)



NOTE: Flood Model Simulations include future sea level rise



Extent of Aerial Photography

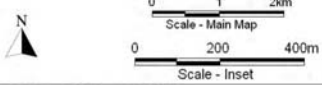
Extent of Aerial Photography

Title:
**Williams River 5% AEP Flood Event
Northern Area - Peak Depths**

Figure:
Drawing 34

Rev:
A

BMT WBM endeavours to ensure that the information in this map is correct at the time of publication. BMT WBM does not warrant, guarantee or make representations regarding the currency and accuracy of information contained in this map.

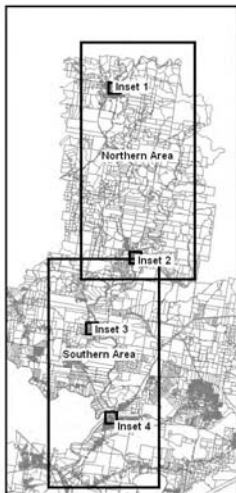




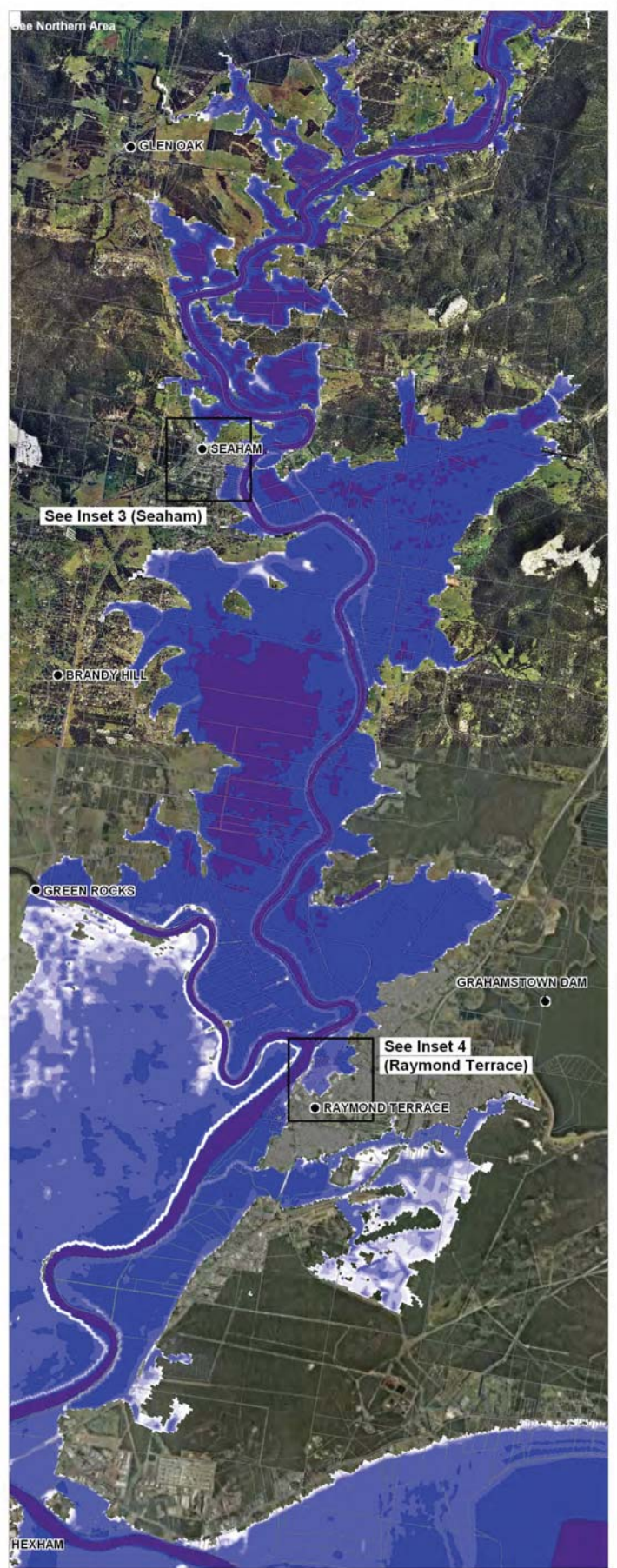
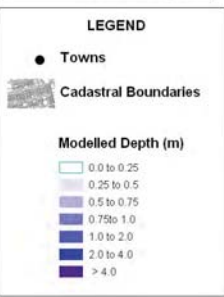
Inset 3 (Seaham)



Inset 4 (Raymond Terrace)



NOTE: Flood Model Simulations include future sea level rise

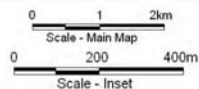


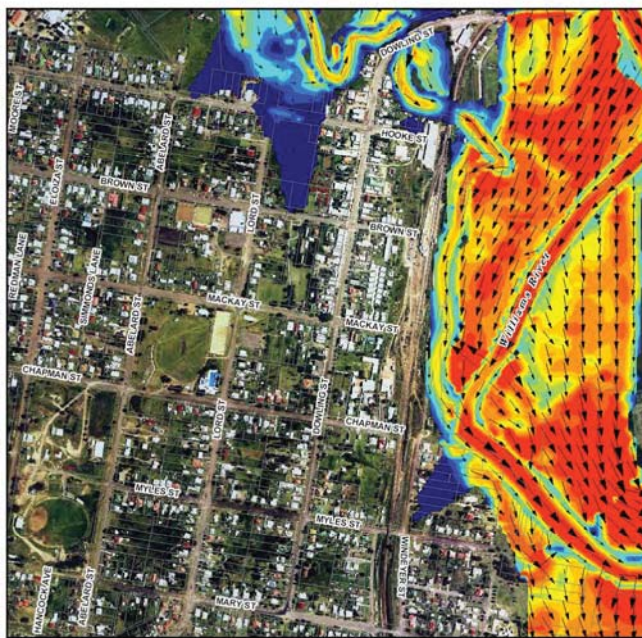
Title:
**Williams River 5% AEP Flood Event
Southern Area - Peak Depths**

Figure:
Drawing 35

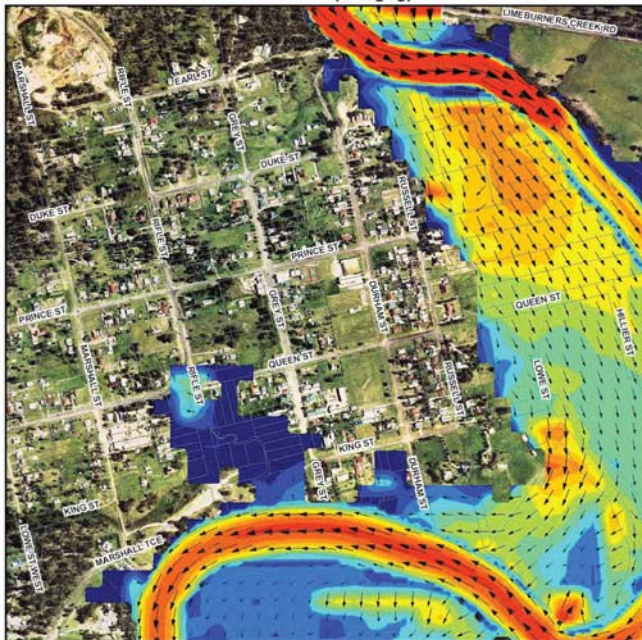
Rev:
A

BMT WBM endeavours to ensure that the information provided in this map is correct at the time of publication. BMT WBM does not warrant, guarantee or make representations regarding the currency and accuracy of information contained in this map.





Inset 1 (Dungog)



Inset 2 (Clarence Town)



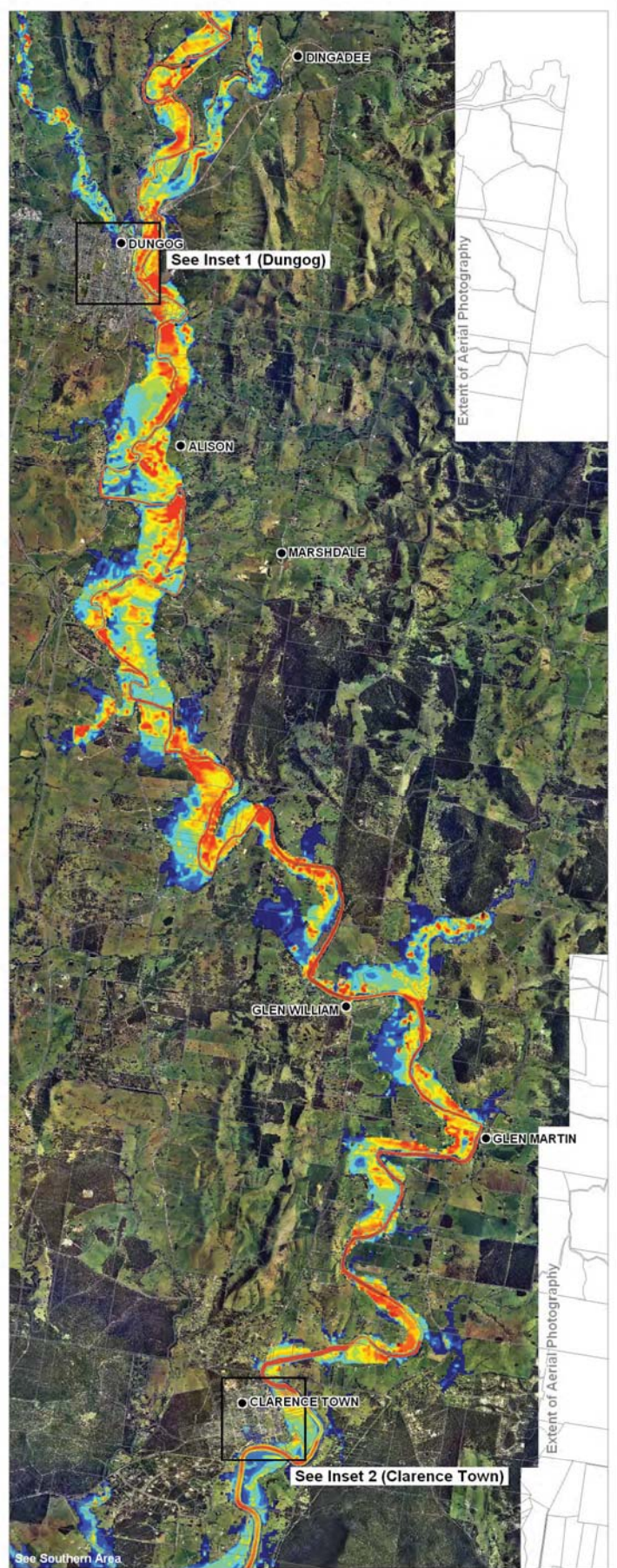
NOTE: Flood Model Simulations include future sea level rise

LEGEND

- Towns
- ▭ Cadastral Boundaries

Modelled Velocity at Peak Depth (m/s)

0.0 to 0.2	1.4 to 1.6
0.2 to 0.4	1.6 to 1.8
0.4 to 0.6	1.8 to 2.0
0.6 to 0.8	2.0 to 3.5
0.8 to 1.0	3.5 to 5.0
1.0 to 1.2	> 5.0
1.2 to 1.4	



Extent of Aerial Photography

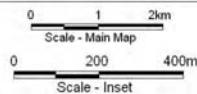
Extent of Aerial Photography

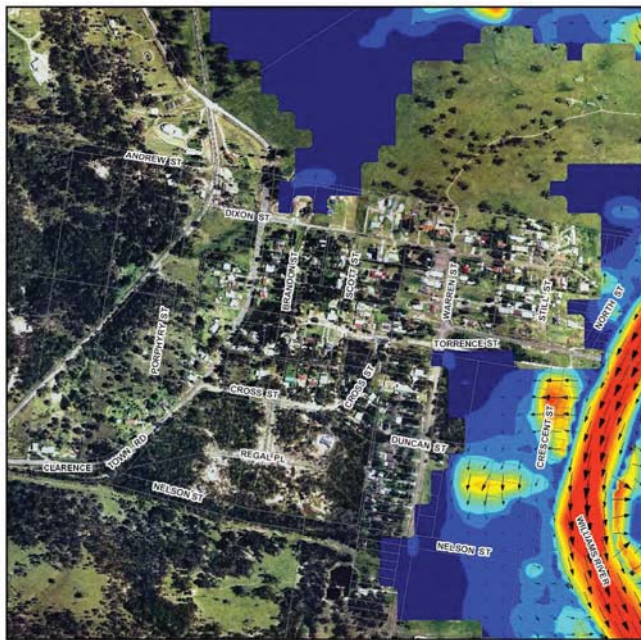
Title:
Williams River 5% AEP Flood Event
Northern Area - Peak Velocities

Figure:
Drawing 36

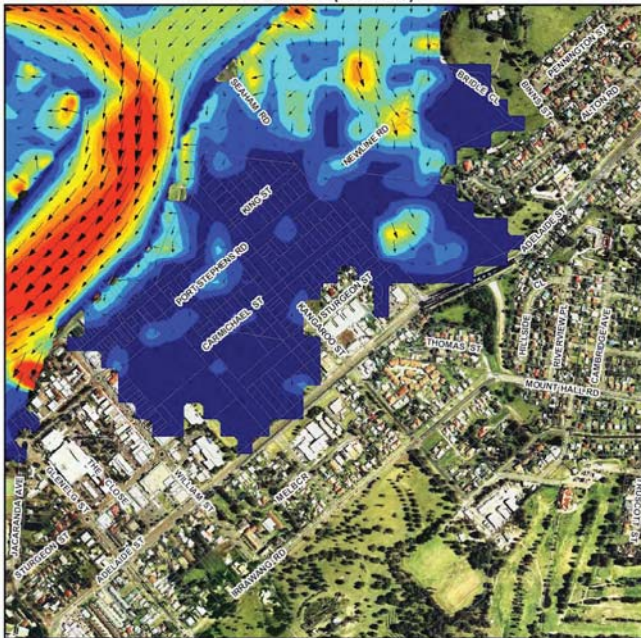
Rev.:
A

BMT WBM endeavours to ensure that the information provided in this map is correct at the time of publication. BMT WBM does not warrant, guarantee or make representations regarding the currency and accuracy of information contained in this map.

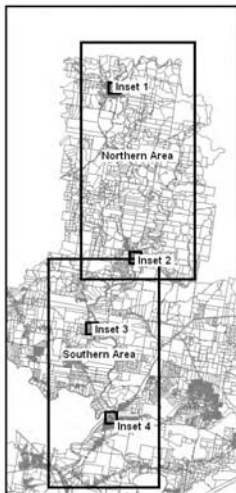
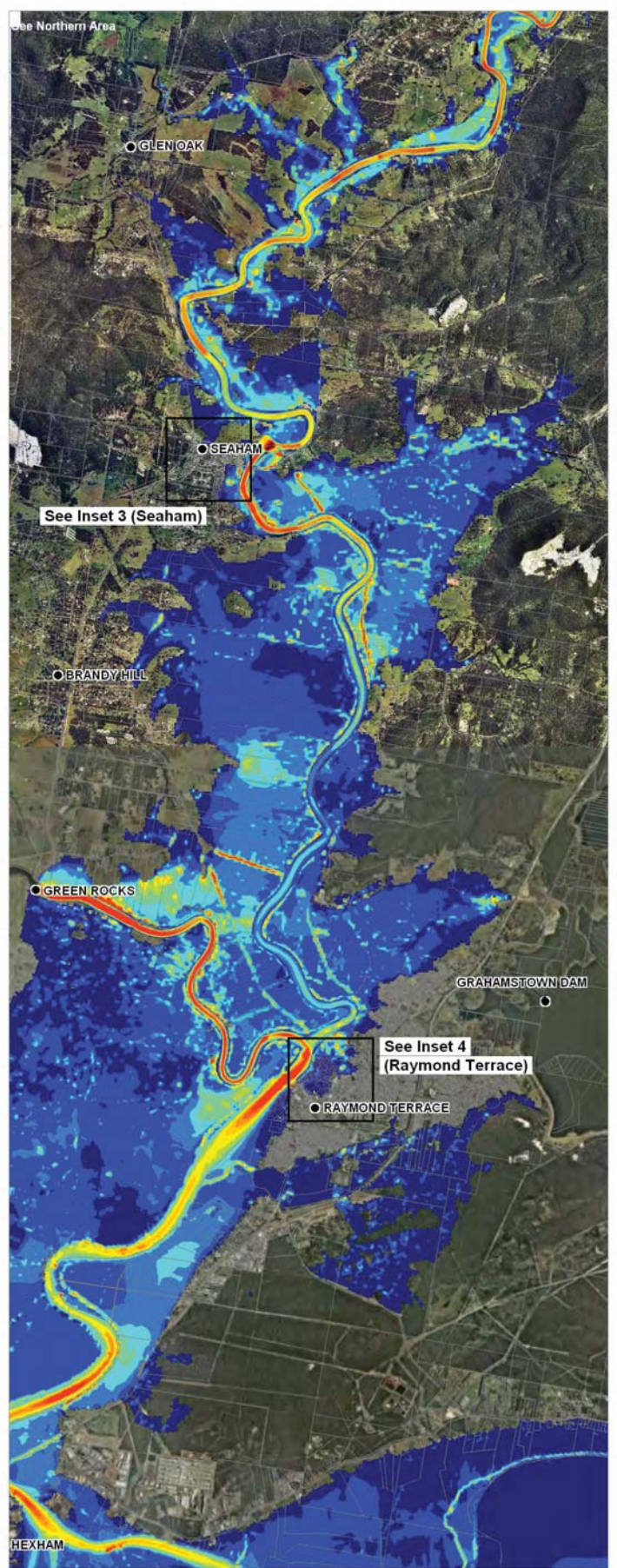




Inset 3 (Seaham)



Inset 4 (Raymond Terrace)



NOTE: Flood Model Simulations include future sea level rise

LEGEND

- Towns
- ▭ Cadastral Boundaries

Modelled Velocity at Peak Depth (m/s)

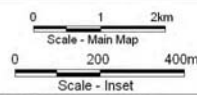
0.0 to 0.2	1.4 to 1.6
0.2 to 0.4	1.6 to 1.8
0.4 to 0.6	1.8 to 2.0
0.6 to 0.8	2.0 to 3.5
0.8 to 1.0	3.5 to 5.0
1.0 to 1.2	> 5.0
1.2 to 1.4	

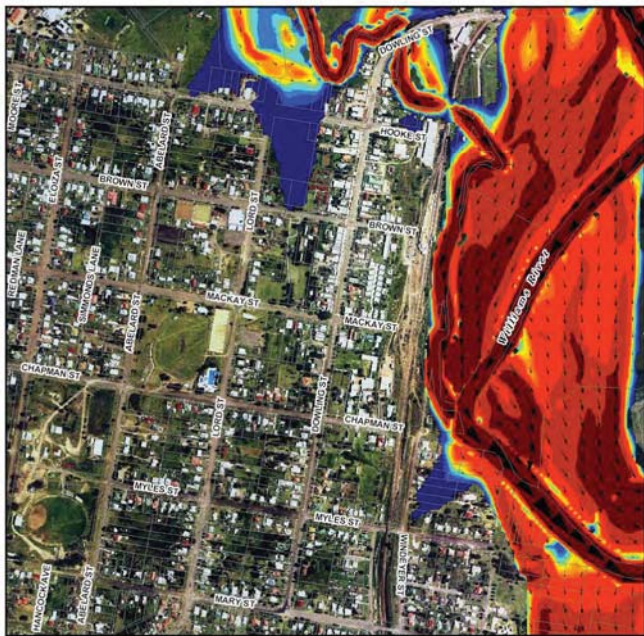
Title:
**Williams River 5% AEP Flood Event
Southern Area - Peak Velocities**

Figure:
Drawing 37

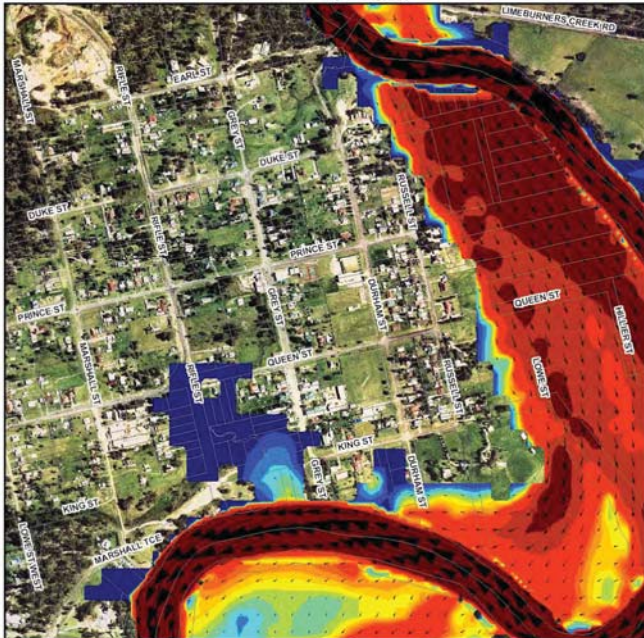
Rev:
A

BMT WBM endeavours to ensure that the information provided in this map is correct at the time of publication. BMT WBM does not warrant, guarantee or make representations regarding the currency and accuracy of information contained in this map.

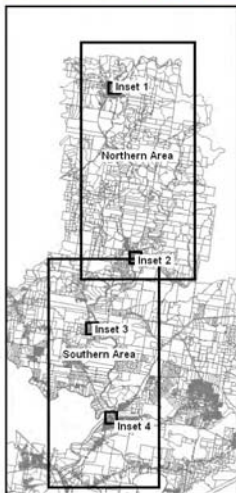




Inset 1 (Dungog)



Inset 2 (Clarence Town)



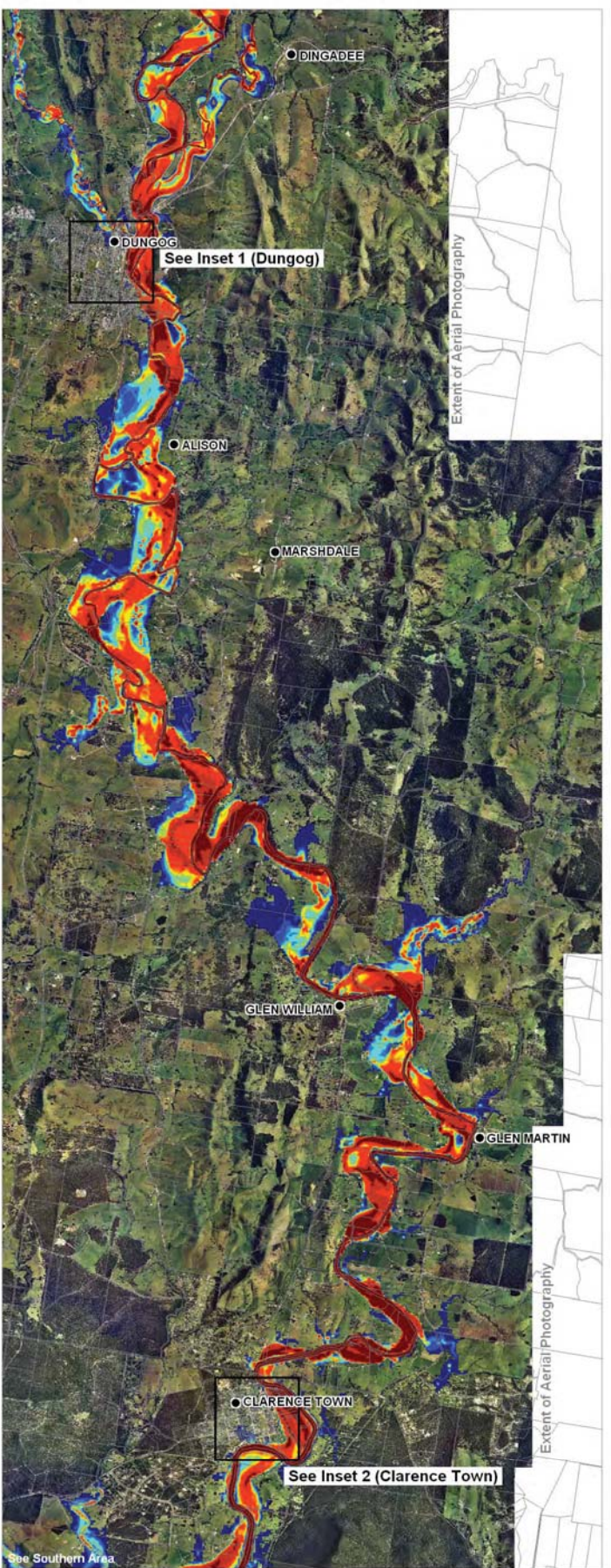
NOTE: Flood Model Simulations include future sea level rise

LEGEND

- Towns
- ▭ Cadastral Boundaries

Modelled Velocity-Depth Product (m/s²)

0.0 to 0.2	1.4 to 1.6
0.2 to 0.4	1.6 to 1.8
0.4 to 0.6	1.8 to 2.0
0.6 to 0.8	2.0 to 3.5
0.8 to 1.0	3.5 to 5.0
1.0 to 1.2	> 5.0
1.2 to 1.4	



Extent of Aerial Photography

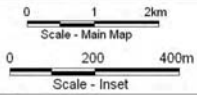
Extent of Aerial Photography

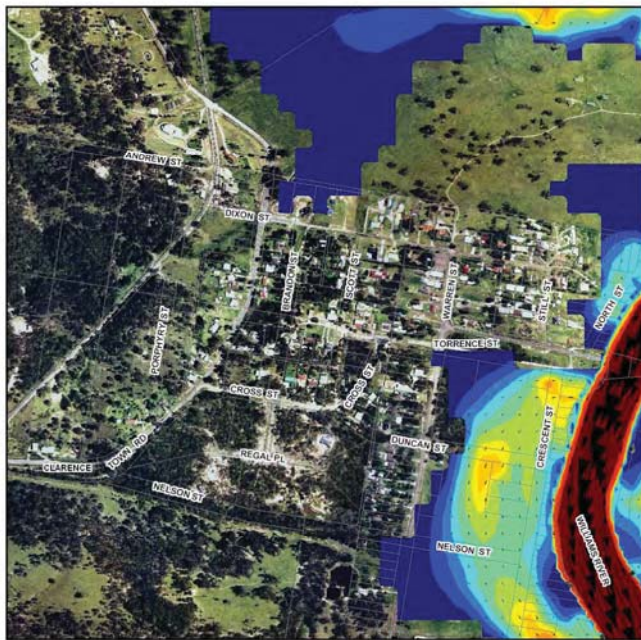
Title:
Williams River 5% AEP Flood Event
Northern Area - Velocity-Depth Product

Figure:
Drawing 38

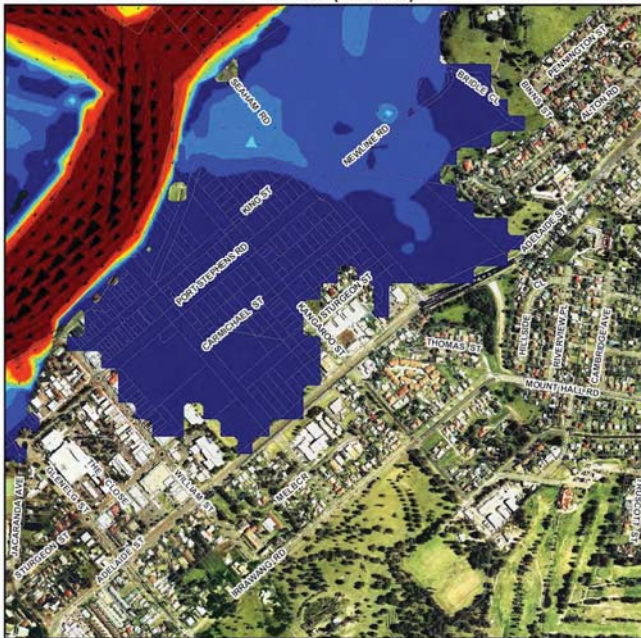
Rev:
A

BMT WBM endeavours to ensure that the information provided in this map is correct at the time of publication. BMT WBM does not warrant, guarantee or make representations regarding the currency and accuracy of information contained in this map.





Inset 3 (Seaham)



Inset 4 (Raymond Terrace)



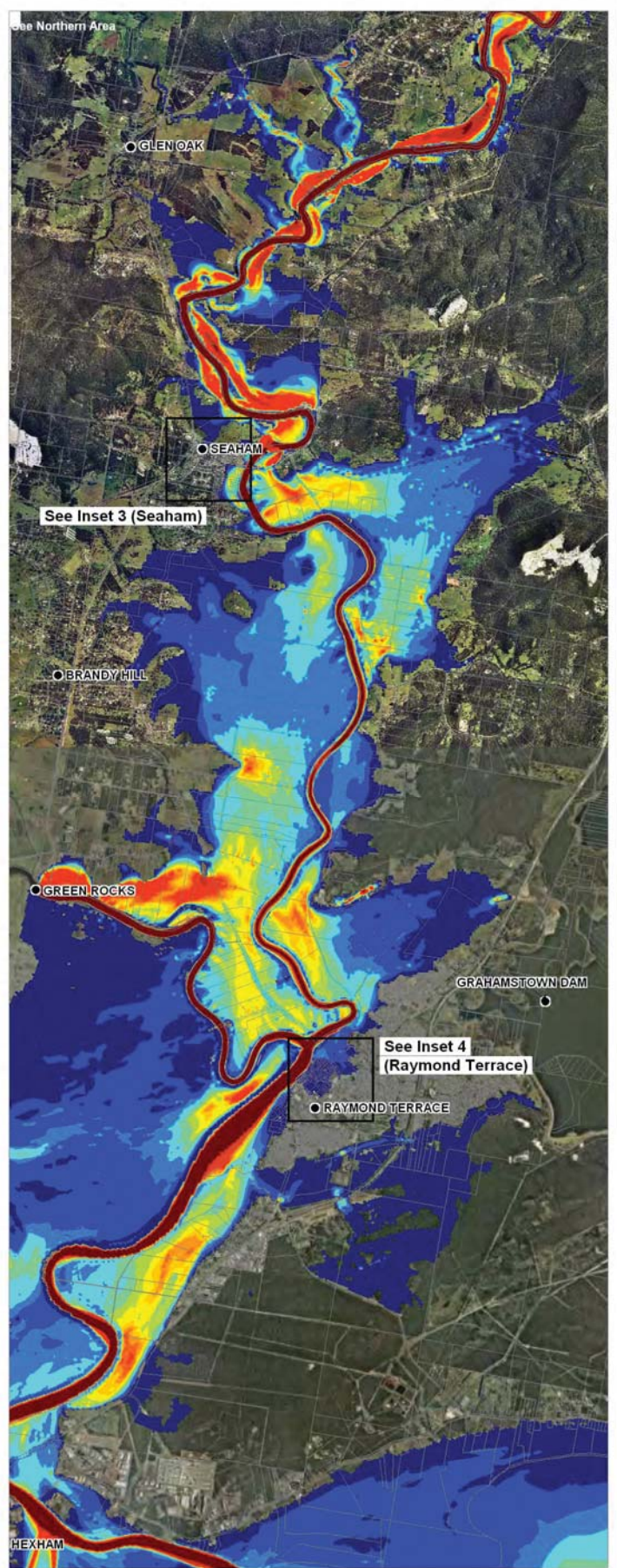
NOTE: Flood Model Simulations include future sea level rise

LEGEND

- Towns
- ▭ Cadastral Boundaries

Modelled Velocity-Depth Product (m/s²)

0.0 to 0.2	1.4 to 1.6
0.2 to 0.4	1.6 to 1.8
0.4 to 0.6	1.8 to 2.0
0.6 to 0.8	2.0 to 3.5
0.8 to 1.0	3.5 to 5.0
1.0 to 1.2	> 5.0
1.2 to 1.4	

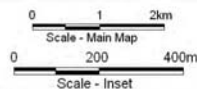


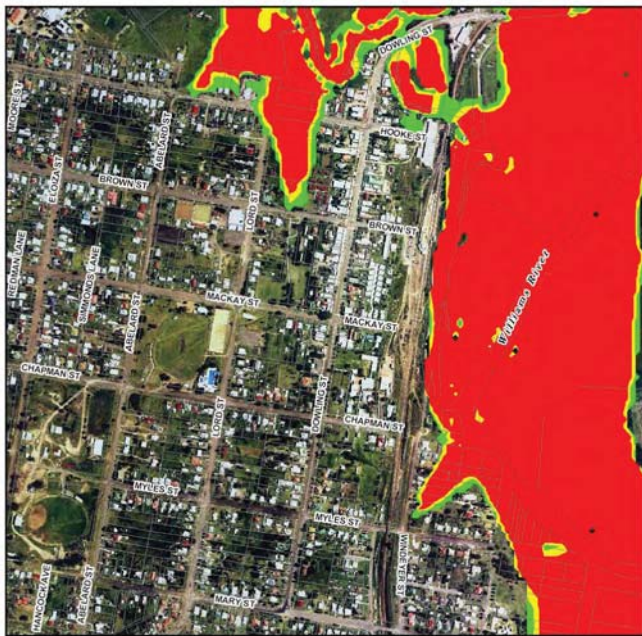
Title:
Williams River 5% AEP Flood Event
Southern Area - Velocity-Depth Product

Figure:
Drawing 39

Rev:
A

BMT WBM endeavours to ensure that the information in this map is correct at the time of publication. BMT WBM does not warrant, guarantee or make representations regarding the currency and accuracy of information contained in this map.

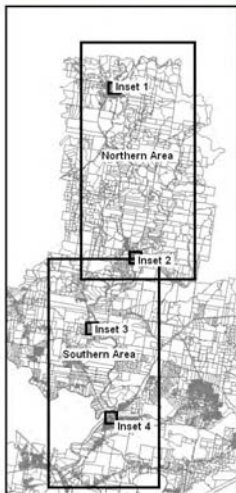




Inset 1 (Dungog)



Inset 2 (Clarence Town)



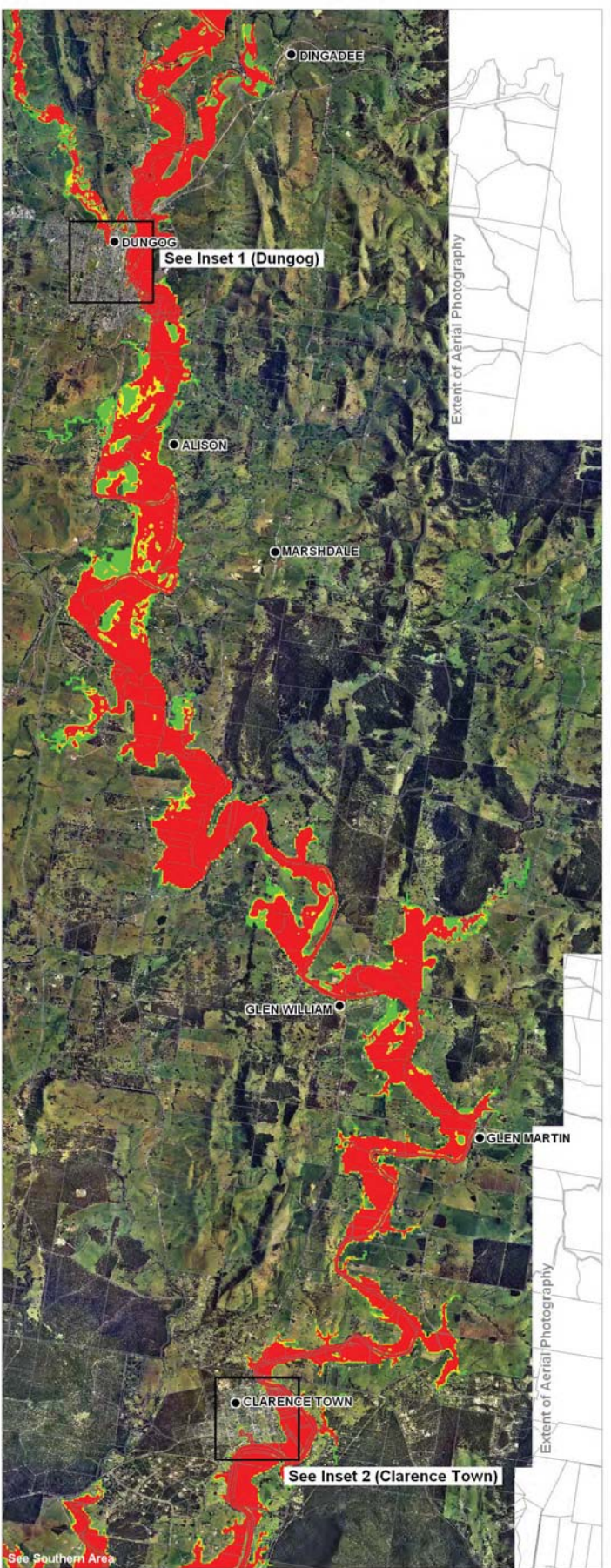
NOTE: Flood Model Simulations include future sea level rise

LEGEND

- Towns
- ▭ Cadastral Boundaries

Provisional Flood Hazard Category

- High Hazard (Red)
- Intermediate Hazard (Yellow)
- Low Hazard (Green)



Extent of Aerial Photography

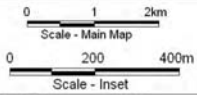
Extent of Aerial Photography

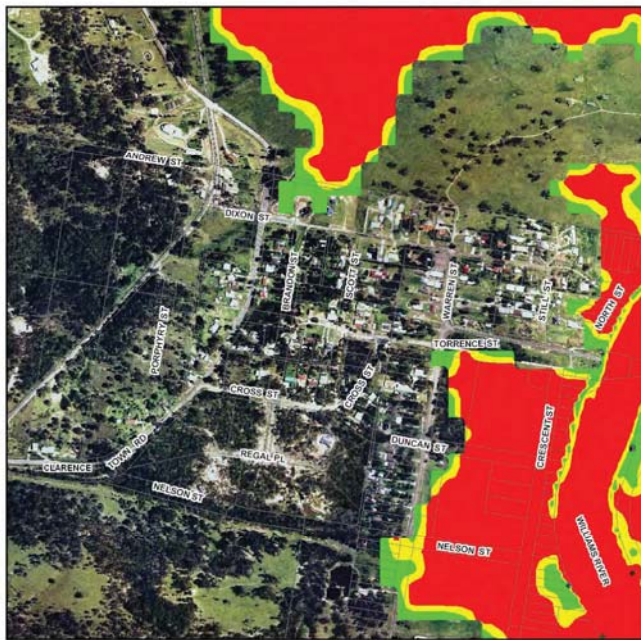
Title:
**Williams River 5% AEP Flood Event
Northern Area - Provisional Hazard**

Figure:
Drawing 40

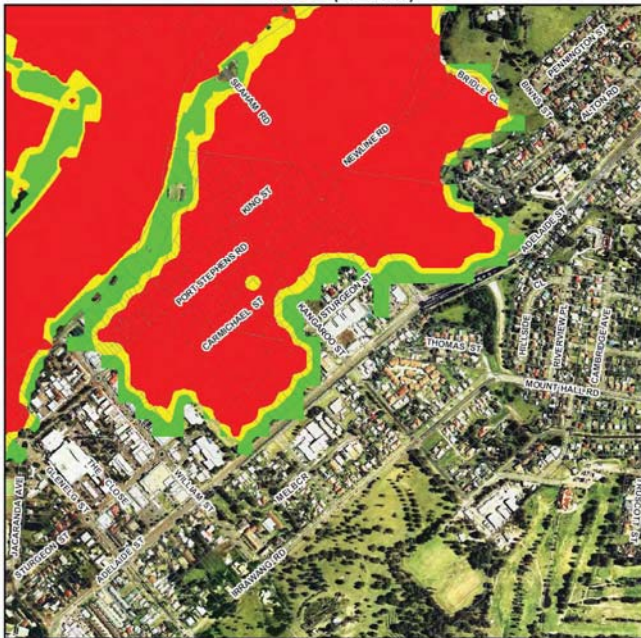
Rev:
A

BMT WBM endeavours to ensure that the information provided in this map is correct at the time of publication. BMT WBM does not warrant, guarantee or make representations regarding the currency and accuracy of information contained in this map.

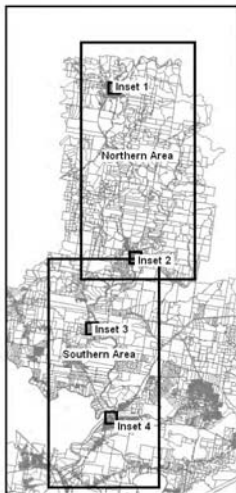




Inset 3 (Seaham)



Inset 4 (Raymond Terrace)



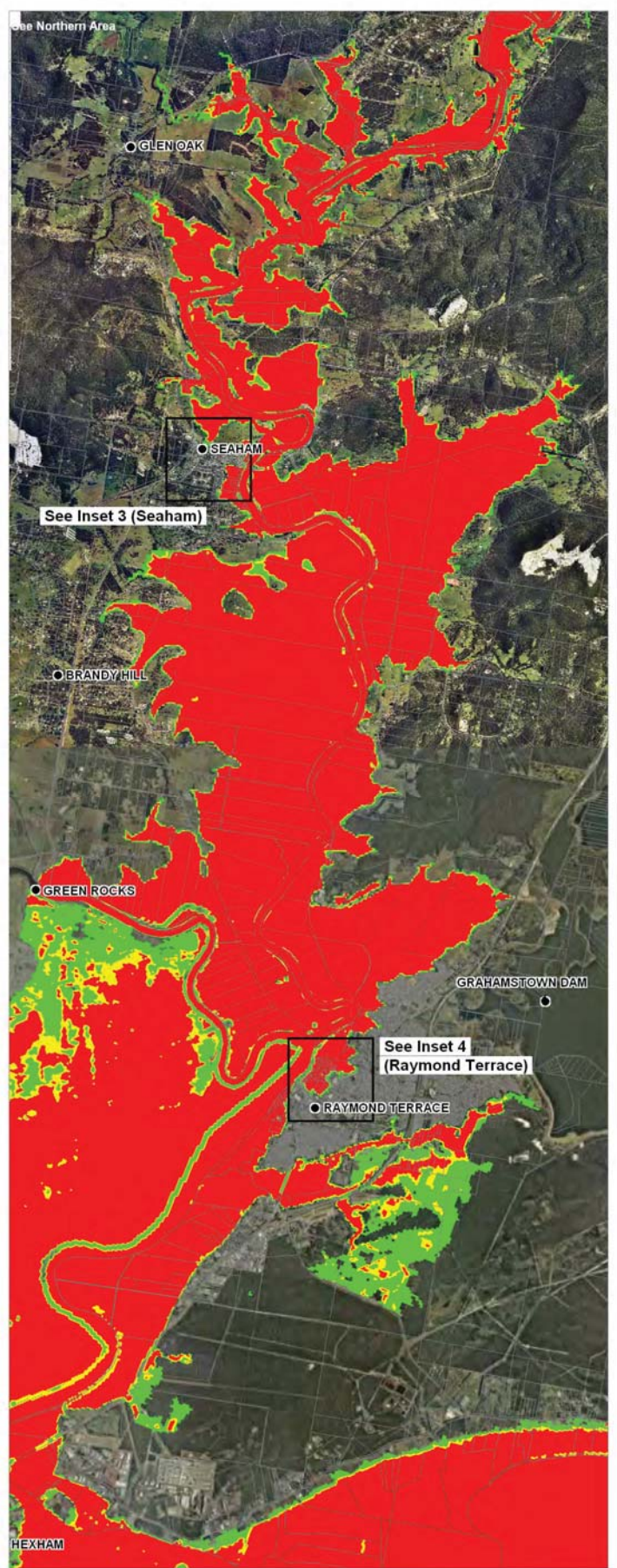
NOTE: Flood Model Simulations include future sea level rise

LEGEND

- Towns
- ▭ Cadastral Boundaries

Provisional Flood Hazard Category

- High Hazard
- Intermediate Hazard
- Low Hazard

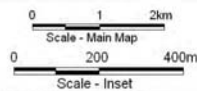


Title:
**Williams River 5% AEP Flood Event
Southern Area - Provisional Hazard**

Figure:
Drawing 41

Rev:
A

BMT WBM endeavours to ensure that the information provided in this map is correct at the time of publication. BMT WBM does not warrant, guarantee or make representations regarding the currency and accuracy of information contained in this map.

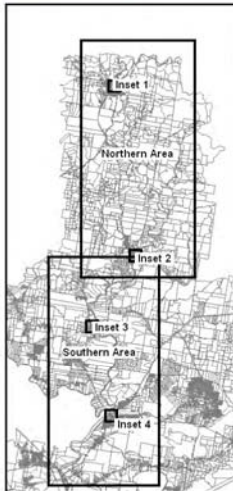




Inset 1 (Dungog)



Inset 2 (Clarence Town)



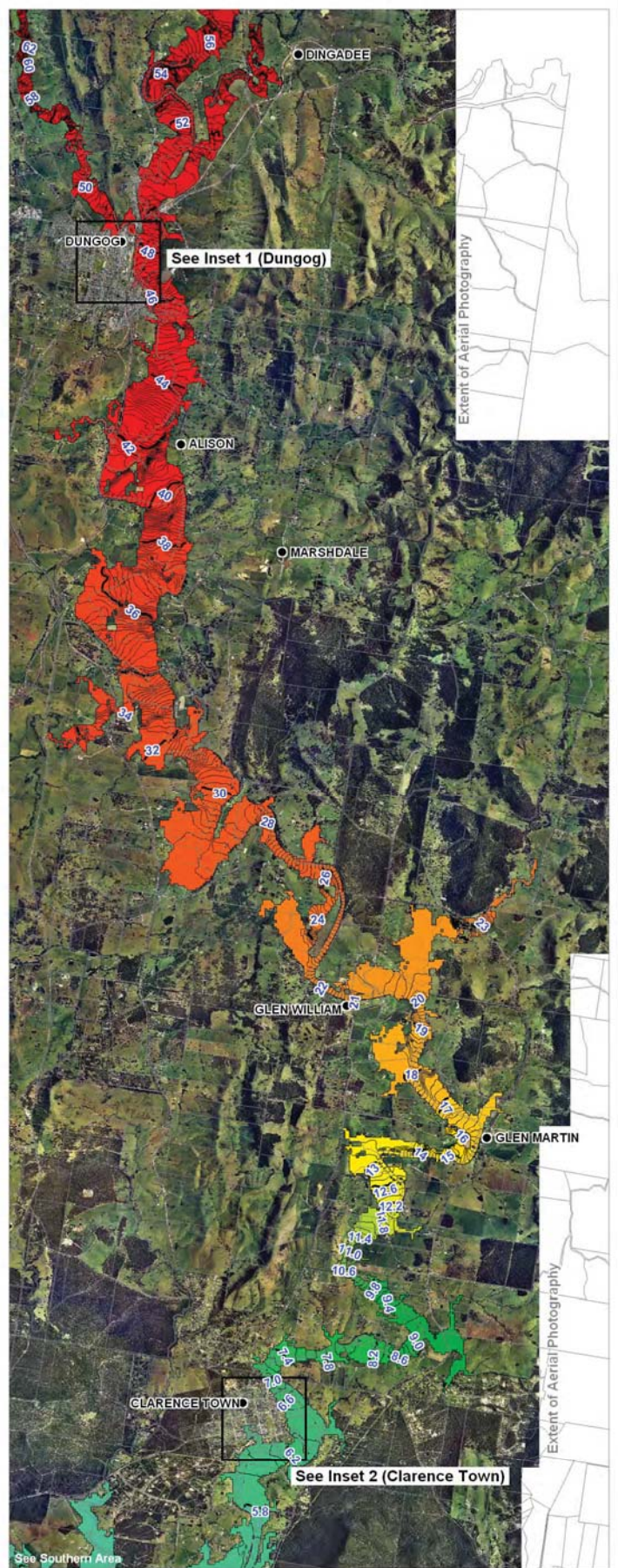
NOTE: Flood Model Simulations include future sea level rise

LEGEND

- Towns
- ▭ Cadastral Boundaries

Modelled Water Level (mAHD)

1.0 to 1.2	4.4 to 4.6	10.6 to 11.0	24.0 to 25.0	56.0 to 58.0
1.2 to 1.4	4.6 to 4.8	11.0 to 11.4	25.0 to 26.0	58.0 to 60.0
1.4 to 1.6	4.8 to 5.0	11.4 to 11.8	26.0 to 28.0	60.0 to 62.0
1.6 to 1.8	5.0 to 5.4	11.8 to 12.2	28.0 to 30.0	62.0 to 64.0
1.8 to 2.0	5.4 to 5.8	12.2 to 12.6	30.0 to 32.0	64.0 to 66.0
2.0 to 2.2	5.8 to 6.2	12.6 to 13.0	32.0 to 34.0	66.0 to 68.0
2.2 to 2.4	6.2 to 6.6	13.0 to 14.0	34.0 to 36.0	68.0 to 70.0
2.4 to 2.6	6.6 to 7.0	14.0 to 15.0	36.0 to 38.0	70.0 to 72.0
2.6 to 2.8	7.0 to 7.4	15.0 to 16.0	38.0 to 40.0	72.0 to 74.0
2.8 to 3.0	7.4 to 7.8	16.0 to 17.0	40.0 to 42.0	74.0 to 76.0
3.0 to 3.2	7.8 to 8.2	17.0 to 18.0	42.0 to 44.0	76.0 to 78.0
3.2 to 3.4	8.2 to 8.6	18.0 to 19.0	44.0 to 46.0	78.0 to 80.0
3.4 to 3.6	8.6 to 9.0	19.0 to 20.0	46.0 to 48.0	80.0 to 82.0
3.6 to 3.8	9.0 to 9.4	20.0 to 21.0	48.0 to 50.0	82.0 to 84.0
3.8 to 4.0	9.4 to 9.8	21.0 to 22.0	50.0 to 52.0	84.0 to 86.0
4.0 to 4.2	9.8 to 10.2	22.0 to 23.0	52.0 to 54.0	
4.2 to 4.4	10.2 to 10.6	23.0 to 24.0	54.0 to 56.0	

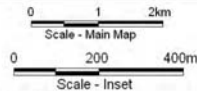


Title:
Williams River 10% AEP Flood Event
Northern Area - Peak Water Level

Figure:
Drawing 42

Rev:
A

BMT WBM endeavours to ensure that the information provided in this map is correct at the time of publication. BMT WBM does not warrant, guarantee or make representations regarding the currency and accuracy of information contained in this map.

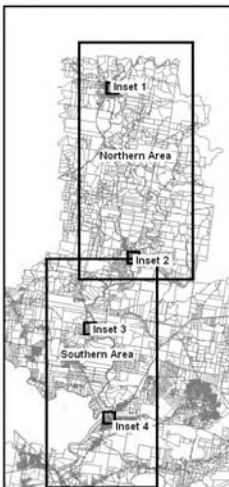
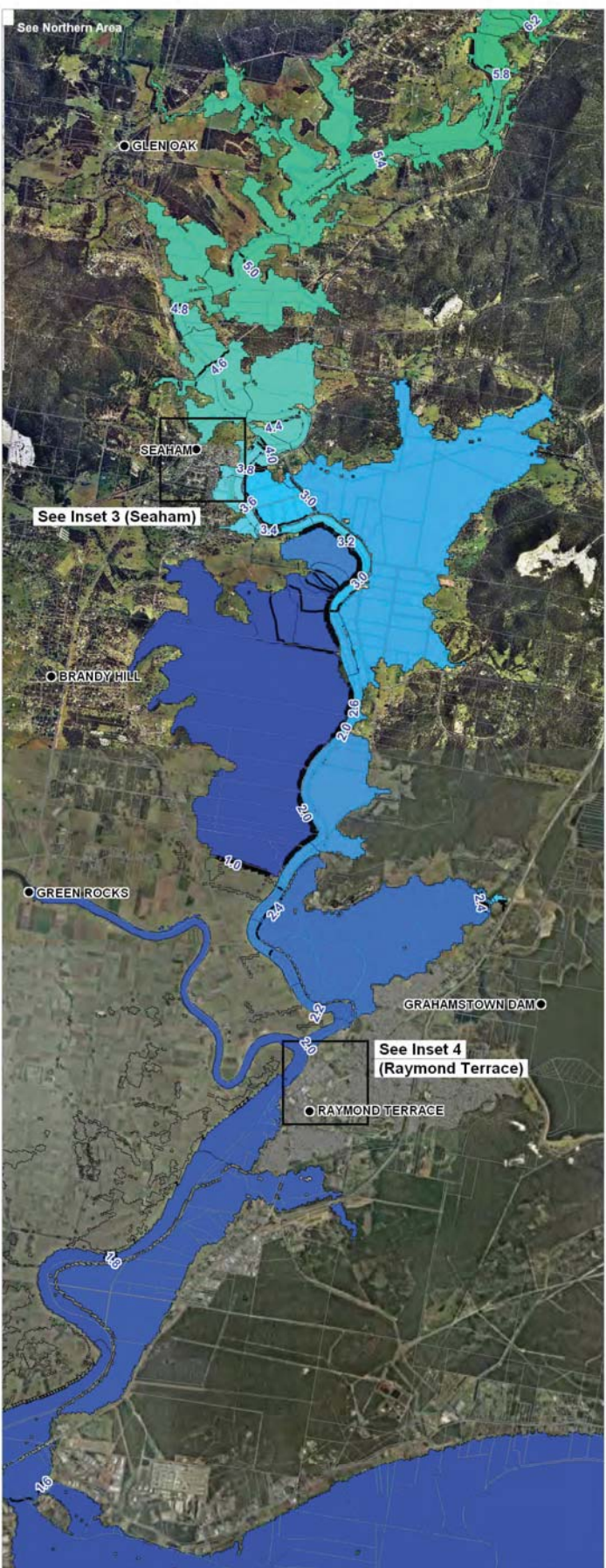




Inset 3 (Seaham)



Inset 4 (Raymond Terrace)



NOTE: Flood Model Simulations include future sea level rise

LEGEND

- Towns
- ▬ Cadastral Boundaries

Modelled Water Level (mAHd)

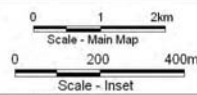
1.0 to 1.2	4.4 to 4.6	10.6 to 11.0	24.0 to 25.0	56.0 to 58.0
1.2 to 1.4	4.6 to 4.8	11.0 to 11.4	25.0 to 26.0	58.0 to 60.0
1.4 to 1.6	4.8 to 5.0	11.4 to 11.8	26.0 to 28.0	60.0 to 62.0
1.6 to 1.8	5.0 to 5.4	11.8 to 12.2	28.0 to 30.0	62.0 to 64.0
1.8 to 2.0	5.4 to 5.8	12.2 to 12.6	30.0 to 32.0	64.0 to 66.0
2.0 to 2.2	5.8 to 6.2	12.6 to 13.0	32.0 to 34.0	66.0 to 68.0
2.2 to 2.4	6.2 to 6.6	13.0 to 14.0	34.0 to 36.0	68.0 to 70.0
2.4 to 2.6	6.6 to 7.0	14.0 to 15.0	36.0 to 38.0	70.0 to 72.0
2.6 to 2.8	7.0 to 7.4	15.0 to 16.0	38.0 to 40.0	72.0 to 74.0
2.8 to 3.0	7.4 to 7.8	16.0 to 17.0	40.0 to 42.0	74.0 to 76.0
3.0 to 3.2	7.8 to 8.2	17.0 to 18.0	42.0 to 44.0	76.0 to 78.0
3.2 to 3.4	8.2 to 8.6	18.0 to 19.0	44.0 to 46.0	78.0 to 80.0
3.4 to 3.6	8.6 to 9.0	19.0 to 20.0	46.0 to 48.0	80.0 to 82.0
3.6 to 3.8	9.0 to 9.4	20.0 to 21.0	48.0 to 50.0	82.0 to 84.0
3.8 to 4.0	9.4 to 9.8	21.0 to 22.0	50.0 to 52.0	84.0 to 86.0
4.0 to 4.2	9.8 to 10.2	22.0 to 23.0	52.0 to 54.0	
4.2 to 4.4	10.2 to 10.6	23.0 to 24.0	54.0 to 56.0	

Title:
Williams River 10% AEP Flood Event
Southern Area - Peak Water Level

Figure:
Drawing 43

Rev:
A

BMT WBM endeavours to ensure that the information provided in this map is correct at the time of publication. BMT WBM does not warrant, guarantee or make representations regarding the currency and accuracy of information contained in this map.





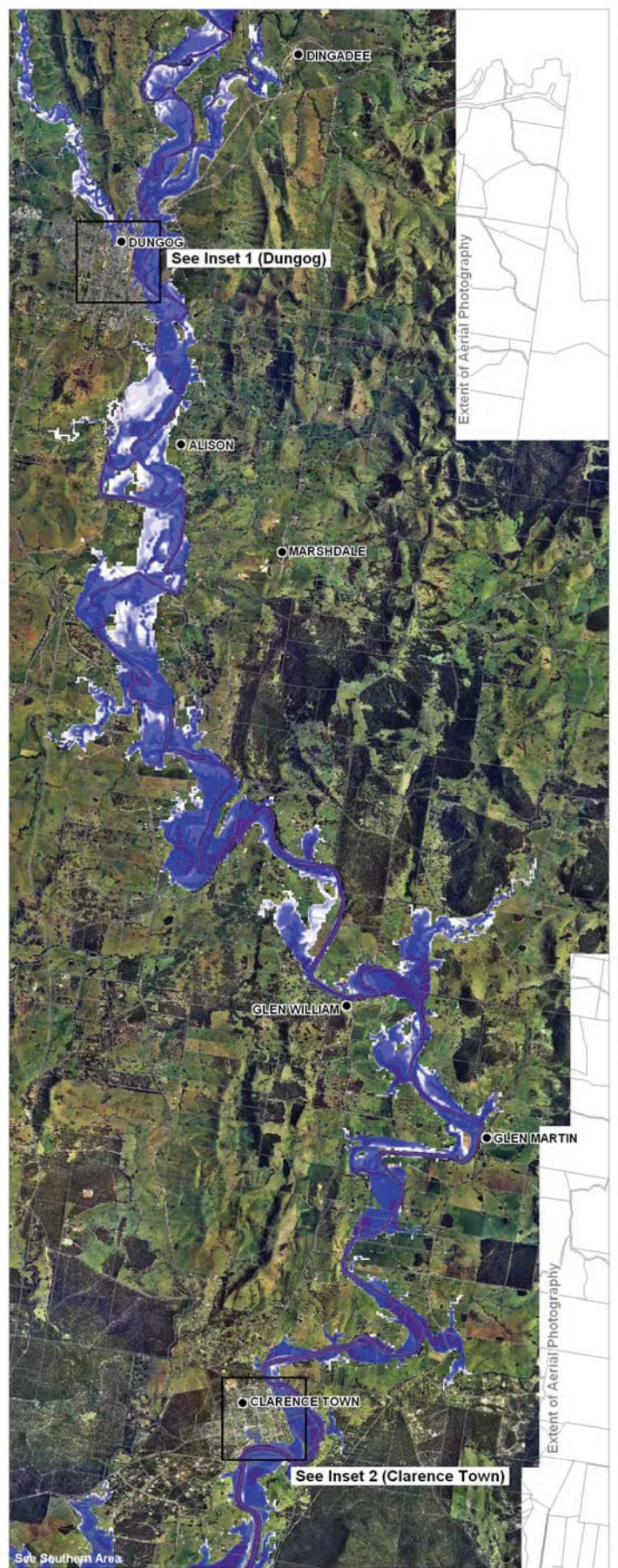
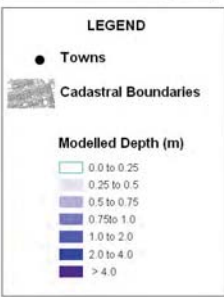
Inset 1 (Dungog)



Inset 2 (Clarence Town)



NOTE: Flood Model Simulations include future sea level rise



Extent of Aerial Photography

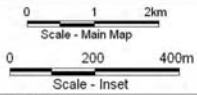
Extent of Aerial Photography

Title:
Williams River 10% AEP Flood Event
Northern Area - Peak Depths

Figure:
Drawing 44

Rev:
A

BMT WBM endeavours to ensure that the information in this map is correct at the time of publication. BMT WBM does not warrant, guarantee or make representations regarding the currency and accuracy of information contained in this map.





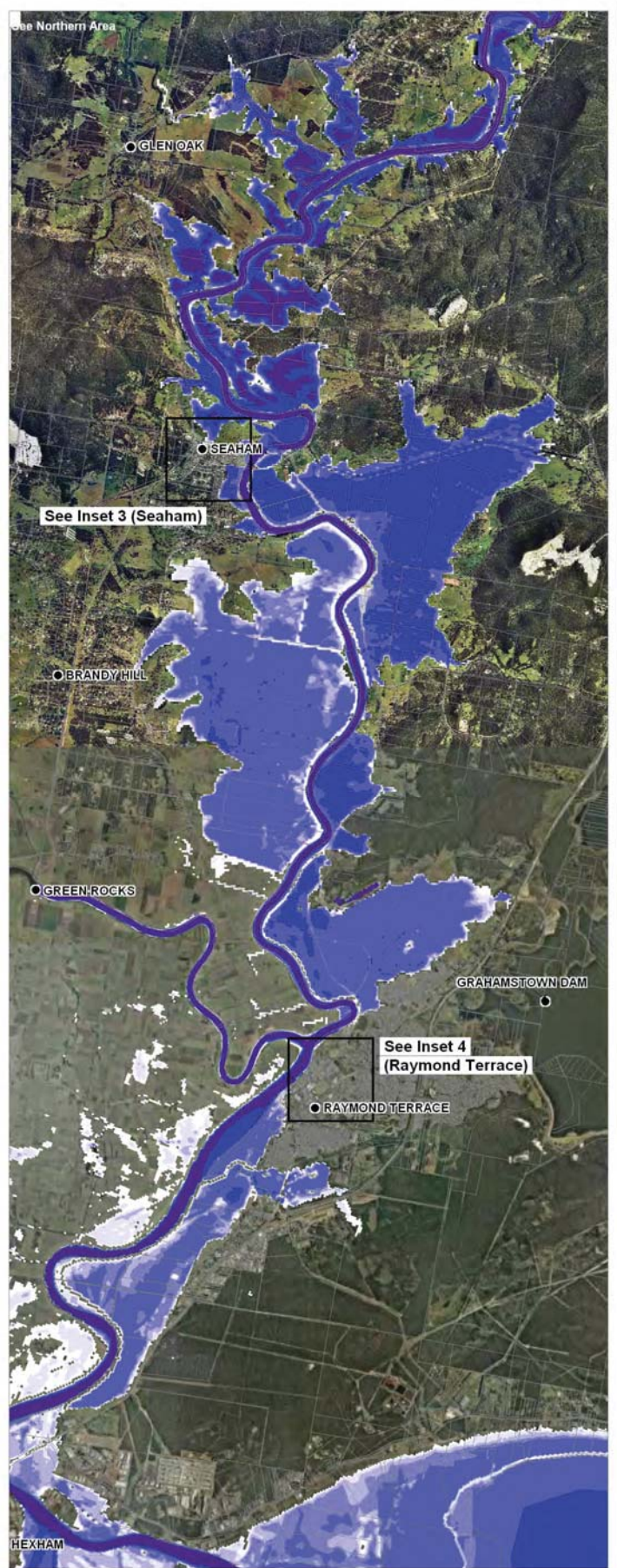
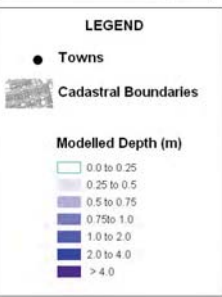
Inset 3 (Seaham)



Inset 4 (Raymond Terrace)



NOTE: Flood Model Simulations include future sea level rise

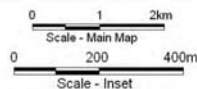


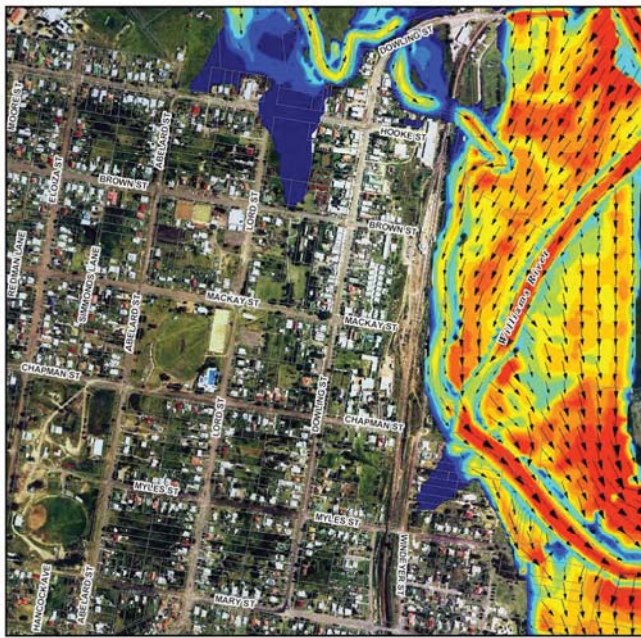
Title:
Williams River 10% AEP Flood Event
Southern Area - Peak Depths

Figure:
Drawing 45

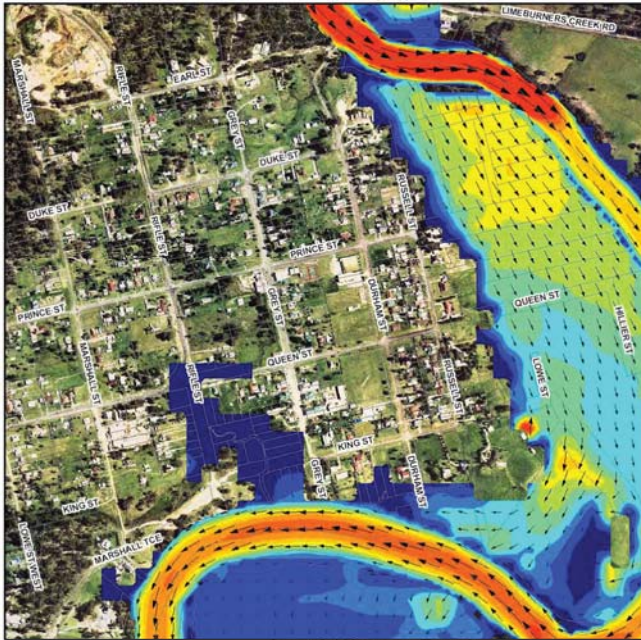
Rev:
A

BMT WBM endeavours to ensure that the information provided in this map is correct at the time of publication. BMT WBM does not warrant, guarantee or make representations regarding the currency and accuracy of information contained in this map.





Inset 1 (Dungog)



Inset 2 (Clarence Town)



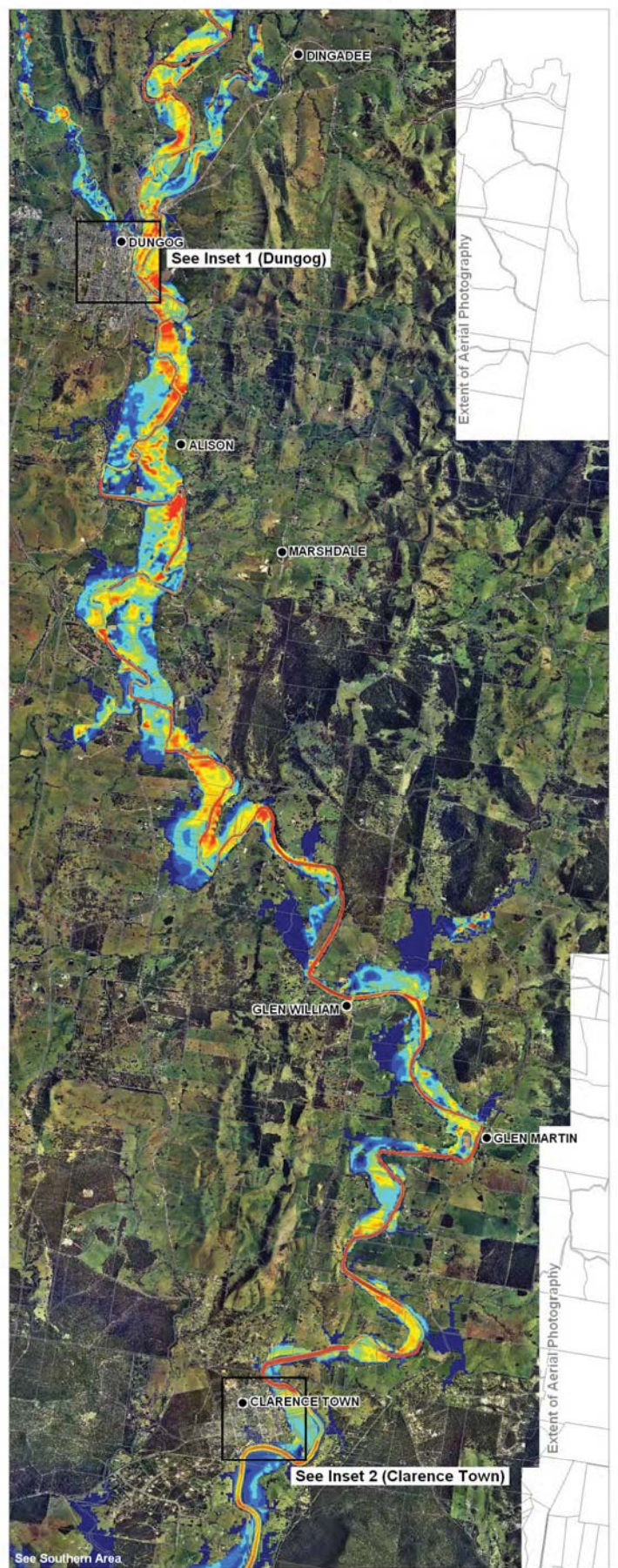
NOTE: Flood Model Simulations include future sea level rise

LEGEND

- Towns
- ▭ Cadastral Boundaries

Modelled Velocity at Peak Depth (m/s)

0.0 to 0.2	1.4 to 1.6
0.2 to 0.4	1.6 to 1.8
0.4 to 0.6	1.8 to 2.0
0.6 to 0.8	2.0 to 3.5
0.8 to 1.0	3.5 to 5.0
1.0 to 1.2	> 5.0
1.2 to 1.4	



Extent of Aerial Photography

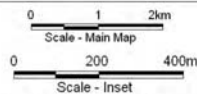
Extent of Aerial Photography

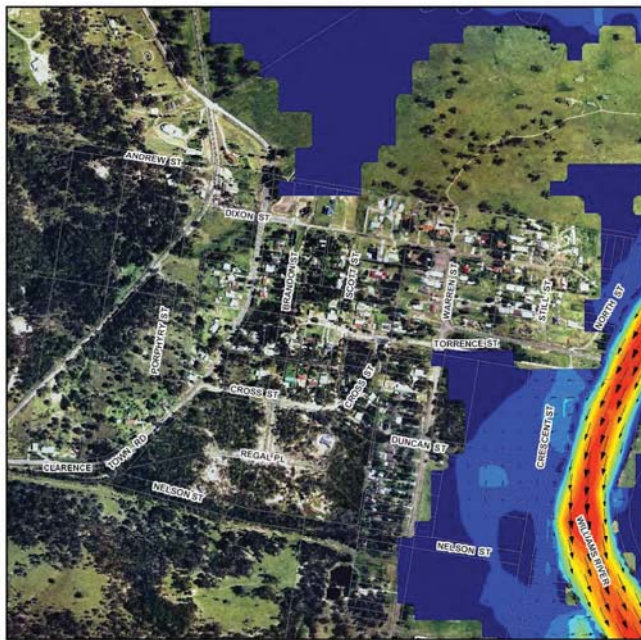
Title:
Williams River 10% AEP Flood Event
Northern Area - Peak Velocities

Figure:
Drawing 46

Rev.:
A

BMT WBM endeavours to ensure that the information provided in this map is correct at the time of publication. BMT WBM does not warrant, guarantee or make representations regarding the currency and accuracy of information contained in this map.

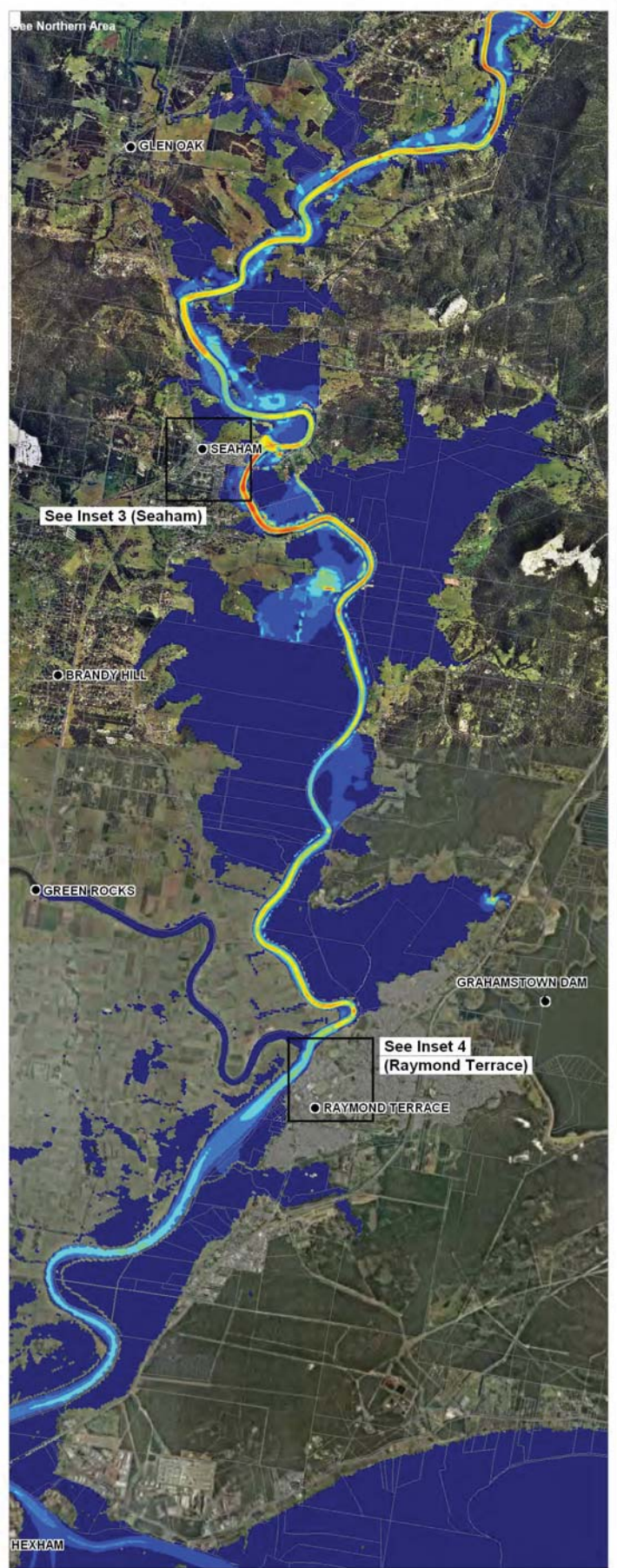




Inset 3 (Seaham)



Inset 4 (Raymond Terrace)



NOTE: Flood Model Simulations include future sea level rise

LEGEND

- Towns
- ▭ Cadastral Boundaries

Modelled Velocity at Peak Depth (m/s)

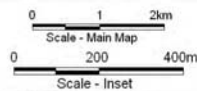
0.0 to 0.2	1.4 to 1.6
0.2 to 0.4	1.6 to 1.8
0.4 to 0.6	1.8 to 2.0
0.6 to 0.8	2.0 to 3.5
0.8 to 1.0	3.5 to 5.0
1.0 to 1.2	> 5.0
1.2 to 1.4	

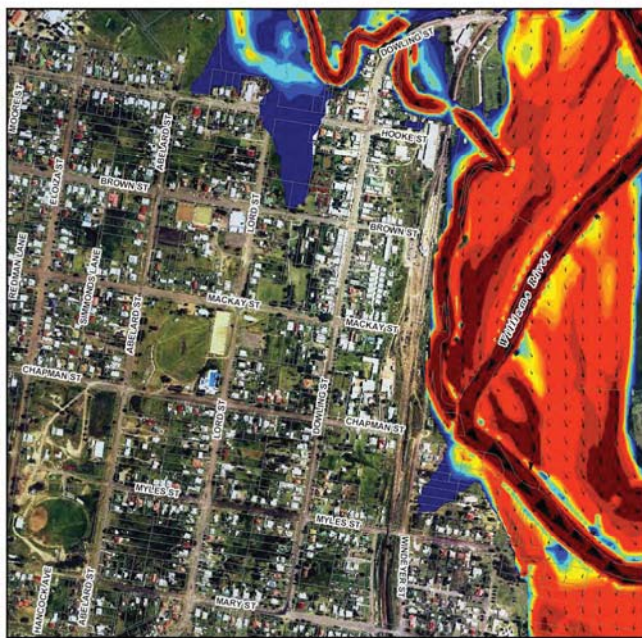
Title:
**Williams River 10% AEP Flood Event
Southern Area - Peak Velocities**

Figure:
Drawing 47

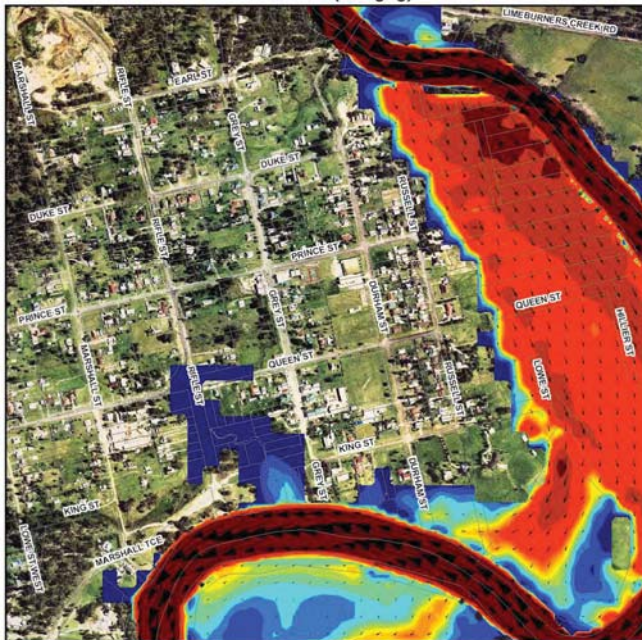
Rev:
A

BMT WBM endeavours to ensure that the information provided in this map is correct at the time of publication. BMT WBM does not warrant, guarantee or make representations regarding the currency and accuracy of information contained in this map.





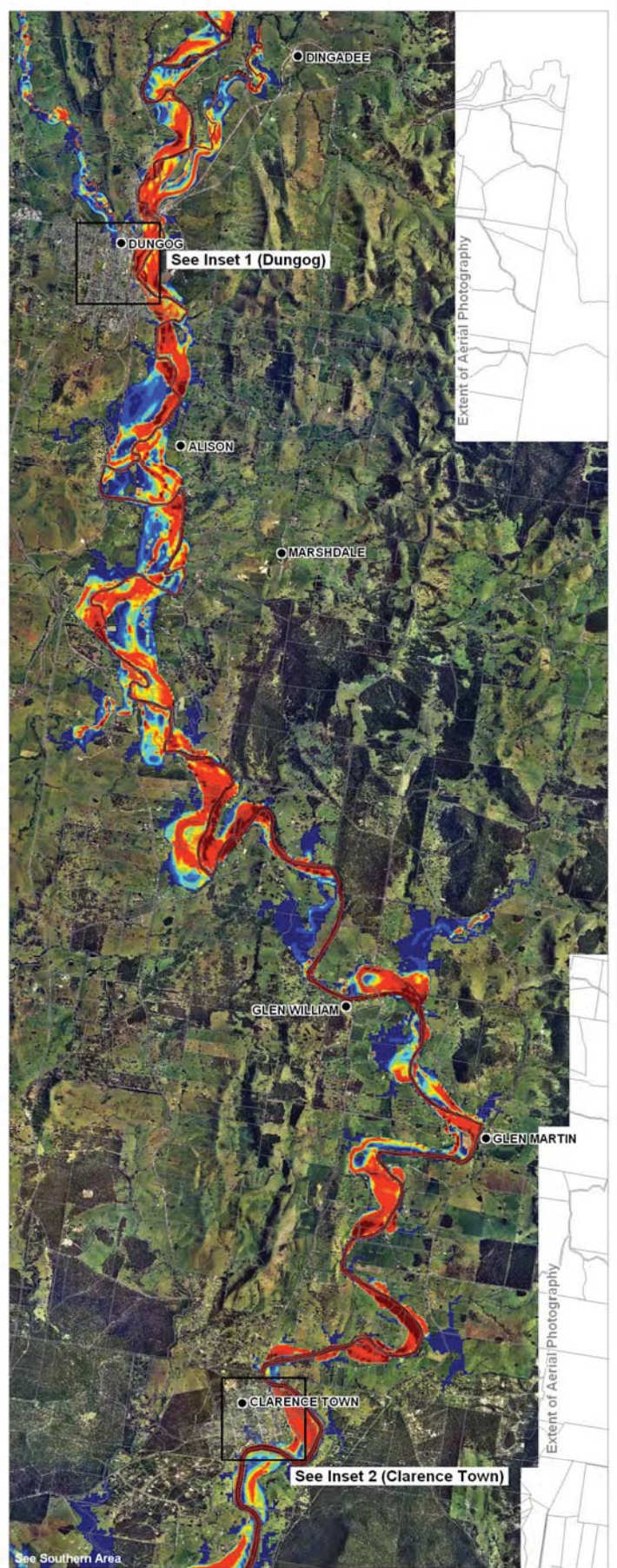
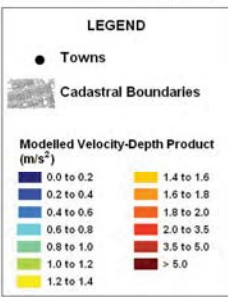
Inset 1 (Dungog)



Inset 2 (Clarence Town)



NOTE: Flood Model Simulations include future sea level rise



Extent of Aerial Photography

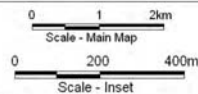
Extent of Aerial Photography

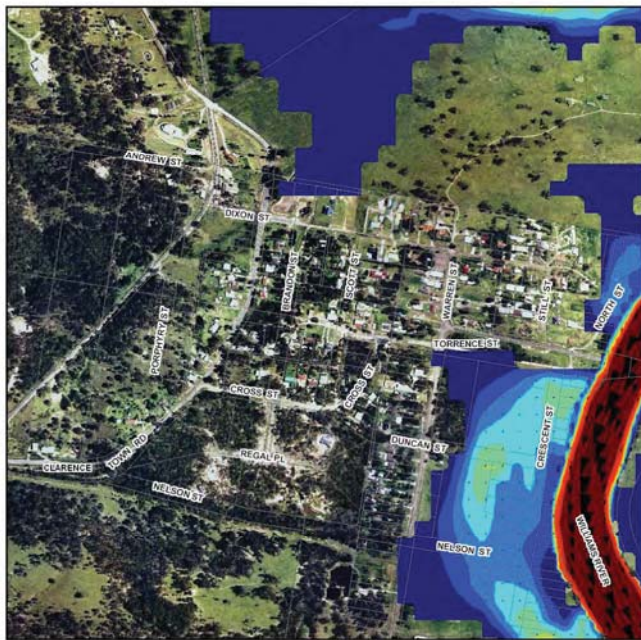
Title:
Williams River 10% AEP Flood Event
Northern Area - Velocity-Depth Product

Figure:
Drawing 48

Rev.:
A

BMT WBM endeavours to ensure that the information provided in this map is correct at the time of publication. BMT WBM does not warrant, guarantee or make representations regarding the currency and accuracy of information contained in this map.

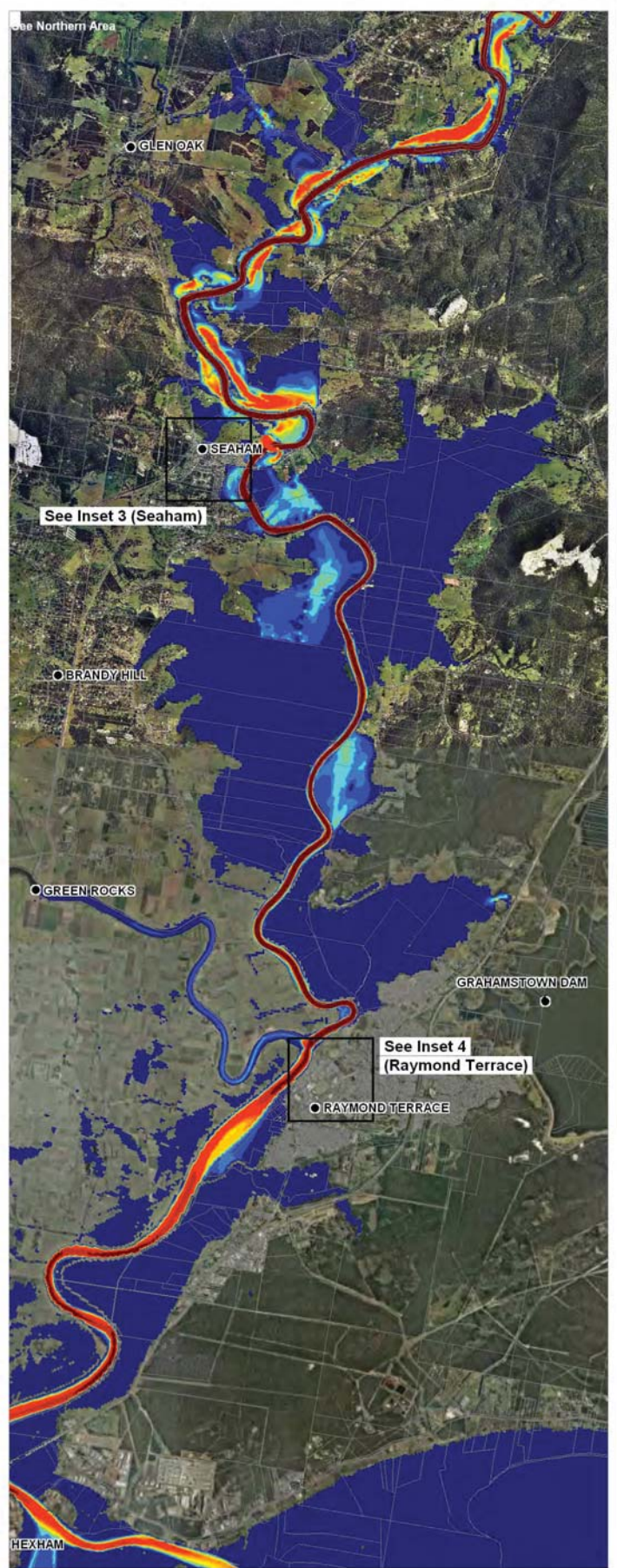




Inset 3 (Seaham)



Inset 4 (Raymond Terrace)



NOTE: Flood Model Simulations include future sea level rise

LEGEND

- Towns
- ▭ Cadastral Boundaries

Modelled Velocity-Depth Product (m/s²)

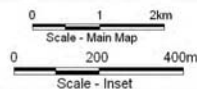
0.0 to 0.2	1.4 to 1.6
0.2 to 0.4	1.6 to 1.8
0.4 to 0.6	1.8 to 2.0
0.6 to 0.8	2.0 to 3.5
0.8 to 1.0	3.5 to 5.0
1.0 to 1.2	> 5.0
1.2 to 1.4	

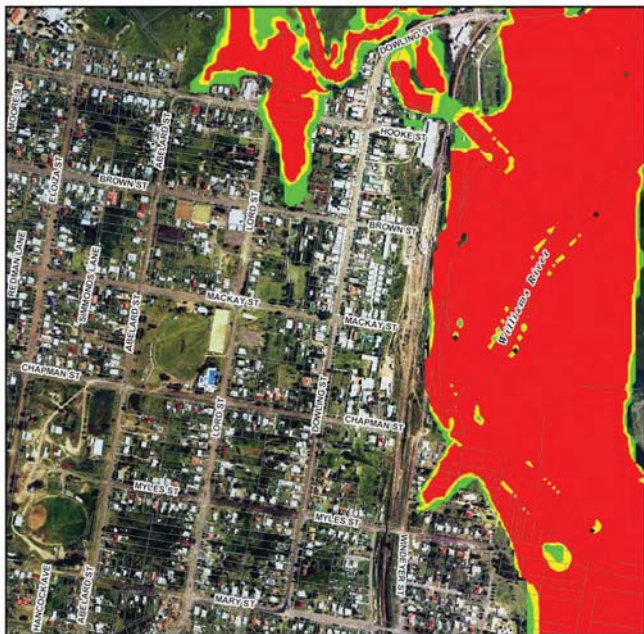
Title:
Williams River 10% AEP Flood Event
Southern Area - Velocity-Depth Product

Figure:
Drawing 49

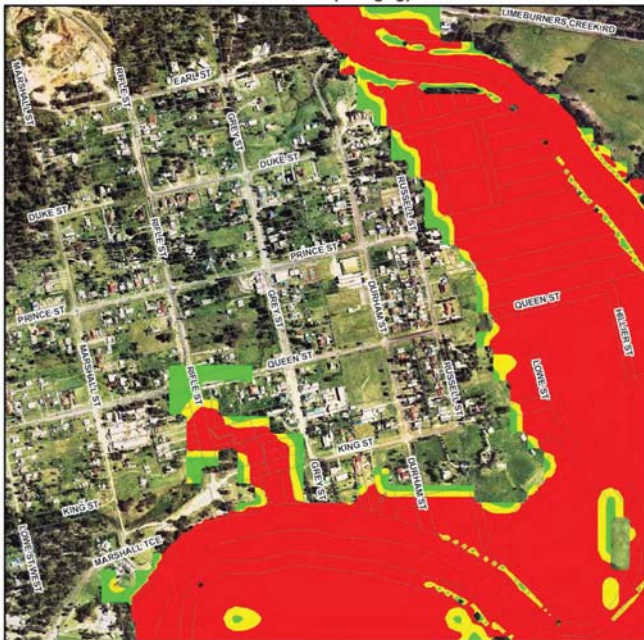
Rev:
A

BMT WBM endeavours to ensure that the information provided in this map is correct at the time of publication. BMT WBM does not warrant, guarantee or make representations regarding the currency and accuracy of information contained in this map.

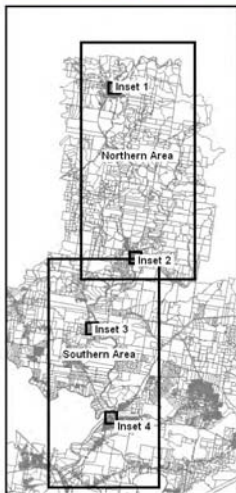




Inset 1 (Dungog)



Inset 2 (Clarence Town)



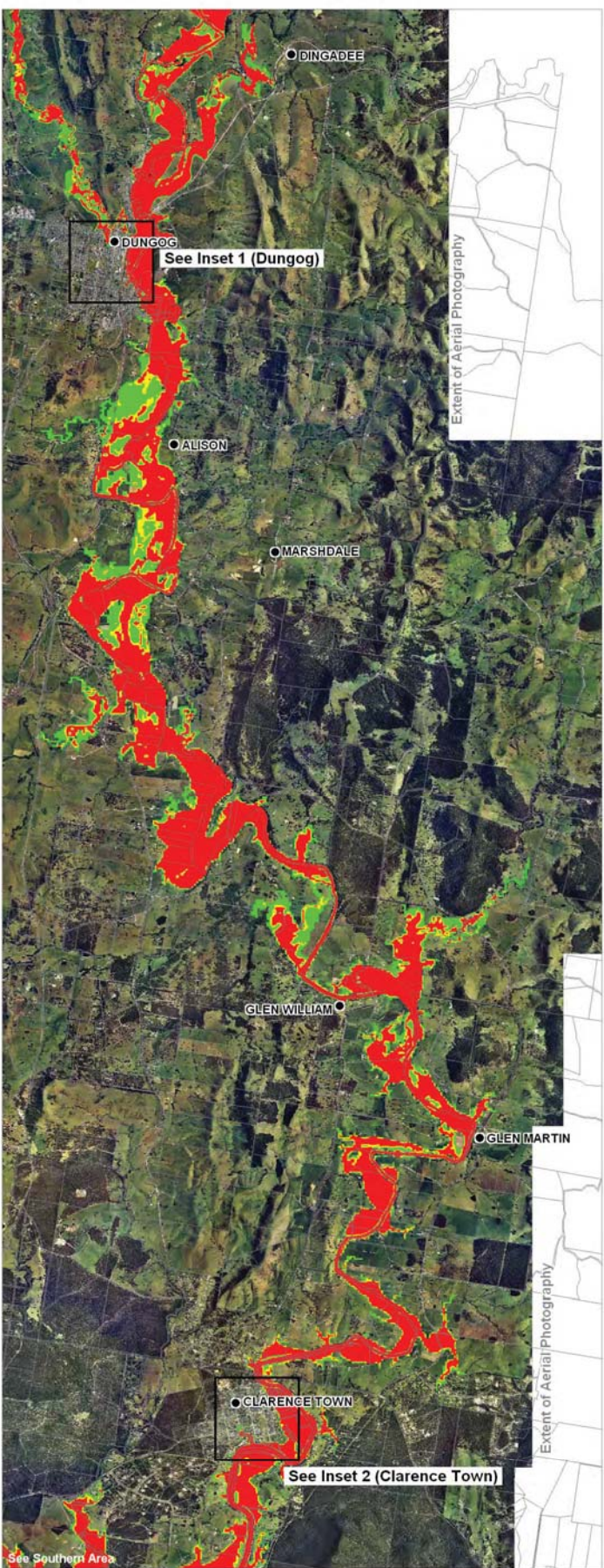
NOTE: Flood Model Simulations include future sea level rise

LEGEND

- Towns
- ▭ Cadastral Boundaries

Provisional Flood Hazard Category

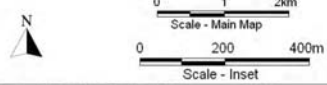
- High Hazard (Red)
- Intermediate Hazard (Yellow)
- Low Hazard (Green)

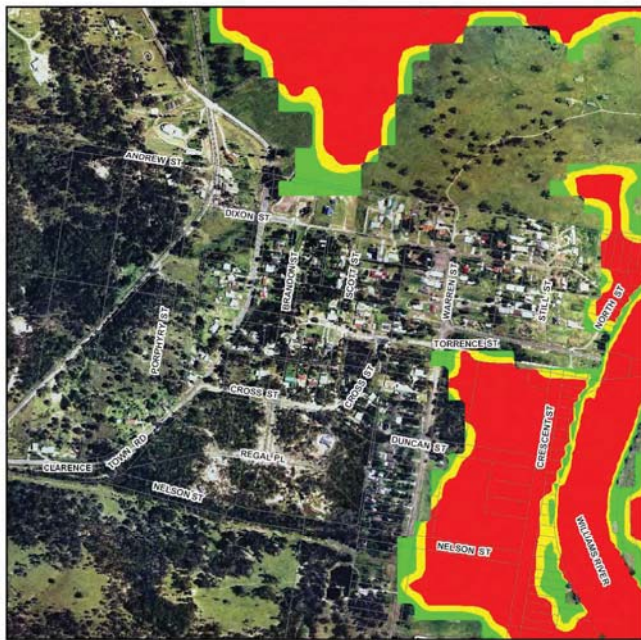


Title:
Williams River 10% AEP Flood Event
Northern Area - Provisional Hazard

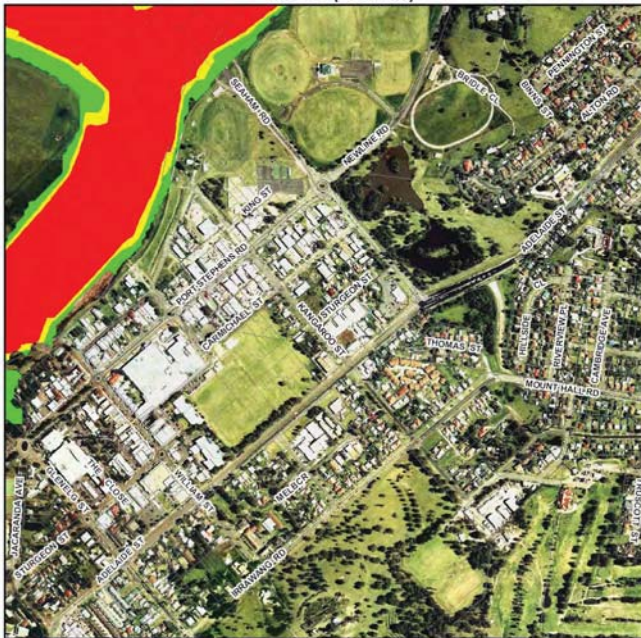
Figure: Drawing 50
Rev: A

BMT WBM endeavours to ensure that the information provided in this map is correct at the time of publication. BMT WBM does not warrant, guarantee or make representations regarding the currency and accuracy of information contained in this map.

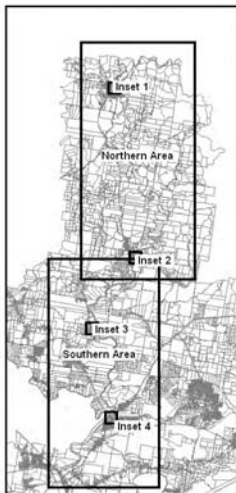




Inset 3 (Seaham)



Inset 4 (Raymond Terrace)



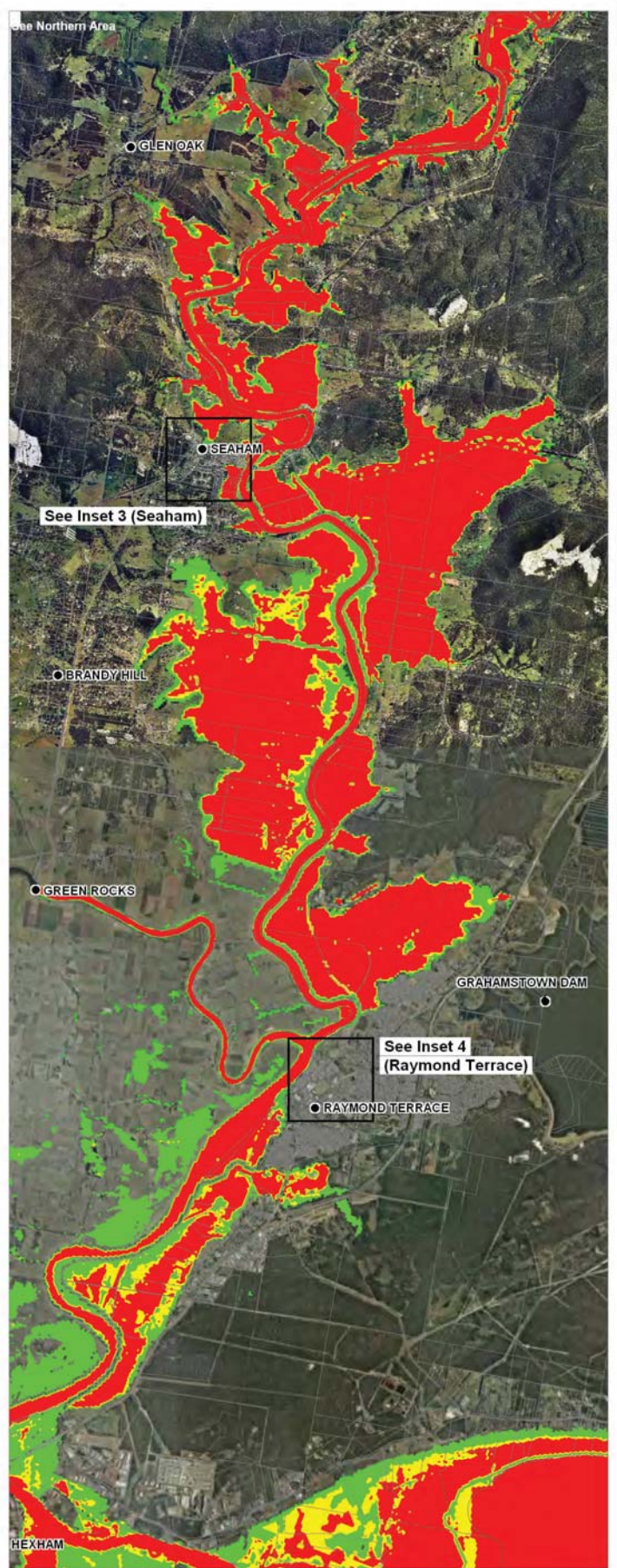
NOTE: Flood Model Simulations include future sea level rise

LEGEND

- Towns
- ▭ Cadastral Boundaries

Provisional Flood Hazard Category

- High Hazard
- Intermediate Hazard
- Low Hazard



Title:
Williams River 10% AEP Flood Event
Southern Area - Provisional Hazard

Figure: Drawing 51
Rev: A

BMT WBM endeavours to ensure that the information provided in this map is correct at the time of publication. BMT WBM does not warrant, guarantee or make representations regarding the currency and accuracy of information contained in this map.

